

Hutchinson Community College

BLUE DRAGONS

2008-09 Men's Basketball Game Notes

Blue Dragon Media Relations - (620) 664-3593
Media Contact - Steve Carpenter, Sports Information Director

Release Date - February 24, 2009
Athletic web site - www.hutchcc.edu/dragons

GAME 29 - JAYHAWK WEST GAME 15



Hutchinson Blue Dragons (18-10, 7-7) vs. Pratt Beavers (17-11, 7-7)

Date: Wednesday, February 25, 2009

Tipoff: 8 p.m.

Site: Dennis Lesh Sports Arena (Capacity: 2,500), Pratt, Kan.

Radio: KHUT-FM (102.9), KWBW-AM (1450), 7:50 p.m. airtime

Internet: www.hutchcc.edu/dragons (live radio, stats)



DRAGONS HEAD TO PRATT ON WEDNESDAY WITH HIGH HOPES OF A TOP-FOUR JAYHAWK WEST FINISH

Right now the scenarios are numerous and the tiebreakers are many while trying to figure out the Jayhawk West pecking order for the 2009 Region VI Tournament as the 2009 regular season enters its final week.

But the Hutchinson Community College men's basketball team knows one thing. To remain in the hunt for a top-four Jayhawk West finish, victories are vital.

And the Blue Dragons travel to play a team in the exact same boat as they are on Wednesday night; the Pratt Beavers.

Tipoff between the Blue Dragons and Beavers will be at 8 p.m. at the Dennis Lesh Sports Arena.

The game can be heard on Blue Dragon flagship station KHUT-FM (102.9) and on sister station KWBW-AM (1450) with Glen Grunwald (play-by-play) and Rusty Hilst (analysis) calling the action. The game can also be heard on the internet on the Blue Dragon Sports Network.

SERIES HISTORY VS. PRATT

Record - 125-22
In Hutchinson - HCC leads 59-11
At Sports Arena - HCC leads 52-7
In Pratt - HCC leads 54-10
Region VI - HCC leads 10-1
Most consecutive wins - 21 (2 times)
Most consecutive losses - 4
Recorded overtimes - Series tied 1-1
Streak - Hutchinson: 3

Both Hutchinson (18-10) and Pratt (17-11) are tied for fifth in the Jayhawk West west 7-7 record, just one game out of third behind Seward County and Garden City.

HCC can still finish anywhere from third to seventh in the league, but by virtue of an 89-70 win over Colby on Saturday, secured a spot in the postseason.

Now the Dragons shoot for a home first-round game that will either be played on Tuesday or Wednesday of next week.

HCC defeated Pratt 83-66 on Jan. 28 at the Sports Arena.

2008-09 BLUE DRAGON SCHEDULE

Date	Opponent	Time/Result
QUARTERBACK CLASSIC		
Oct. 31	U. of St. Mary Junior Varsity	W, 86-54
Nov. 1	Labette	W, 79-57
GRAND PRAIRIE HOTEL CLASSIC		
Nov. 6-8	Sterling College JV	W, 102-45
Nov. 7	Fort Scott	W, 81-62
Nov. 8	Weatherford College	W, 97-68
Nov. 11	at Allen County	W, 79-53
AIRPORT STEAKHOUSE CLASSIC		
Nov. 14-15	Clarendon College	W, 88-78
Nov. 15	McCook	L, 68-70
Nov. 22	Highland	W, 79-72
Nov. 25	Allen County	L, 70-72
JAYHAWK SHOOTOUT at Coffeyville		
Dec. 5/7	vs. Coffeyville	L, 86-90
Dec. 5	vs. Kansas City	W, 78-48
Dec. 7	Central Nebraska	W, 96-73
Dec. 13	Friends University JV	W, 94-55
Dec. 31	Seward County	W, 76-69
Jan. 3	at Dodge City	W, 86-74
Jan. 7	Garden City	W, 82-80
Jan. 10	at Butler	L, 60-86
Jan. 14	Barton	W, 74-70
Jan. 21	at Colby	L, 50-73
Jan. 25	Pratt	W, 83-66
Jan. 28	at Cloud County	L, 70-71 (OT)
Jan. 31	at Seward County	L, 58-82
Feb. 2	Dodge City	L, 68-71
Feb. 4	at Garden City	L, 77-79
Feb. 7	Butler	W, 55-48
Feb. 11	at Barton	L, 69-81
Feb. 18	Colby	W, 89-70
Feb. 21	at Pratt	8 p.m.
Feb. 25	Cloud County	7:30 p.m.
Feb. 28	Region VI First Round at TBA	
Mar. 4	Region VI Tournament at Wichita	
Mar. 7-9		

2008-09 BLUE DRAGON NUMERICAL ROSTER

No.	Name	Pos	Ht.	Yr.	Hometown (Previous school)	Worth Noting
3	Darius Johnson-Odom	G	6-2	Fr.	Raleigh, NC (Wakefield HS)	Had SR 46 pts. vs. Coffeyville and 15 20-plus points games in 08-09.
15	Devon McBride	G	6-3	So.	Richmond, VA (Binghamton U.)	Has been indefinitely suspended from team.
21	Cliff Dixon	F	6-10	So.	Suitland, MD (Mottow State CC)	Posted 7th double-double of season (14 pts./12 rbs.) vs. Barton.
22	Lazarus Johnson	G	6-3	Fr.	Miami, FL (Miami Senior HS)	Had season-high nine assists against Sterling College JV.
23	Javari Williams	F	6-5	R-Fr.	Brampton, Ontario (St. Joseph HS)	Had career high 15 points with 9 rbs, 5 asts, 2 stls vs. Colby on 2/21.
24	Tom Shirley	F	6-7	Fr.	Grantville, KS (Jefferson West HS)	Hit 8 of 10 shots in 19-point outing against Weatherford.
25	Cody Beaton	G	6-0	Fr.	Hutchinson, KS (Buhler HS)	Went 4-4 from 3-point range, scored season-high 14 vs. Friends JV.
32	Chris Banks	G	6-2	So.	Fort Scott, KS (Fort Scott HS)	One of team's top defenders; held CNCC's top scorer to 3 of 19 FGs.
33	Austin Bond	G	6-0	So.	Kansas City, KS (Piper HS)	Posted career-high 15 points on 6 of 6 shooting vs. Barton 2/21.
34	Dominique Rutledge	F	6-8	Fr.	Newark, NJ (Edison Academy)	Four of five double-doubles have come vs. Jayhawk West foes.
42	Ryan Douvier	F	6-6	So.	Newton, KS (Newton HS)	First start, Douvier scored 6 pts. with 10 rbs., 2 steals vs. USM. JV
RS	Everson Lacerda	C	6-11	So.	Belo Horizonte, Brazil (Colby CC)	Transfer from Colby; will redshirt in the 2008-09 season.

DRAGONS CLIMB TO NO. 2 IN NJCAA IN ALL-TIME WINS

With their 76-69 victory over Seward County on Jan. 3, the Hutchinson Community College men's basketball team moved past Moberly Area Community College for second place on the NJCAA all-time wins list.

The Blue Dragons are 1,516-532, a winning percentage of .742, in their 78th season of men's basketball.

The Blue Dragons trail only Southeastern Iowa in all-time wins. Southeastern Iowa became the first NJCAA program to win 1,500 games in the 2007-08 season.

With a 79-53 victory over Labette on Nov. 1, 2008, the Blue Dragons became only the third NJCAA program to post 1,500 victories.

A 63-46 victory over river Butler Community College on Jan. 28, 2004, the Blue Dragons posted victory No. 1,400.

NJCAA ALL-TIME WINS

1. Southeastern Iowa1,543
2. Hutchinson1,516
3. Moberly1,512
4. Vincennes1,456

JOHNSON-ODOM OFF TO A SPECTACULAR START AT HCC

It didn't take a school-record scoring effort to convince Blue Dragon fans that freshman guard Darius Johnson-Odom was special. That 46-point effort against Coffeyville on Dec. 5 at the Jayhawk Shootout just solidified the fact that he was.

Johnson-Odom is now being referenced along side names of some Blue Dragon greats. His numbers in his freshman season are already a basis for the comparisons.

Johnson-Odom is currently 2nd in Region VI and is 16th in the NJCAA in scoring at 21.2 points per game. His streak of 10-straight 20-plus-point games was snapped on Jan. 14 at Butler.

Johnson-Odom has 18 games of scoring 20 or more points this season.

During a three-game stretch in the first semester of 30, 46 and 32 points, where he shot 48.3 percent overall and 44.4 percent (16 of 36) from 3-point range.

Johnson-Odom is ranked No. 4 on the HCC freshman scoring list with 593 points. His scoring average is No. 3 on the HCC freshman scoring average list, trailing Blue Dragon greats Roy "Pooh" Hairston (1993) and Rudy Jackson (1973).

Johnson-Odom is still 83 points away from joining the Blue Dragon single-season Top 10 scoring list. His season scoring average is currently eighth on the single-season percentage list.

BLUE DRAGON TOP 10 FRESHMAN SCORING LIST

1. Roy Hairston (1993)807
2. Rudy Jackson (1973)679
3. Tyrone Jones (1986)605
4. Darius Johnson-Odom (2009)593
5. Corey Floyd (1989)592
6. Richard Morsden (1971)556
7. Brandon Gary (2003)534
9. Cortez Barnes (1991)489
9. Teko Wynder (1973)488
10. Stan Blackmon (1971)485

BLUE DRAGON TOP 10 FRESHMAN SCORING AVG. LIST

1. Roy Hairston (1993)23.7
2. Rudy Jackson (1973)23.4
3. Darius Johnson-Odom (2009)21.2
4. Corey Floyd (1989)19.1
5. Teko Wynder (1973)16.4
5. Richard Morsden (1971)16.4

JOHNSON-ODOM ECLIPSES 36-YEAR OLD SCORING RECORD

HCC freshman guard Darius Johnson-Odom broke one of the longest-standing individual records in Blue Dragon basketball history on Dec. 5 against Coffeyville at the Jayhawk Shootout.

Johnson-Odom broke the single-game school record for scoring with 46 points in a 90-86 loss to Coffeyville.

The old record belonged to Richard Morsden, who scored 45 points against Dodge City in 1972.

For the game, Johnson-Odom hit 14 of 26 shots, 8 of 17 from 3-point range, and was 10 of 10 from the free-throw line. Johnson-Odom also had nine rebounds, four assists and one steal in 38:50.

Johnson-Odom carried the team, especially in the last 12 minutes, scoring 32 points during that span.

Johnson-Odom now has two games in the single-game Top 10. He scored 37 points in an 83-66 victory over Pratt on Jan. 28. Johnson-Odom was 10 of 15 overall shooting, going 3 of 5 from 3-point range and was 14 of 19 from the free-throw line.

BLUE DRAGON TOP 10 SINGLE SCORING GAMES

46 - Darius Johnson-Odom2008
45 - Richard Morsden1972
43 - Eric Stevens1991
40 - Roy "Pooh" Hairston1994
38 - Roy "Pooh" Hairston1993
38 - Nate Brumfield2006
37 - Darius Johnson-Odom2008
37 - Tyrone Jones1987
37 - William Davis1988
37 - Ben Davis1994
36 - Todd Christian1986

Head Coach Ryan Swanson

Ryan Swanson is in his third season as Blue Dragon head coach. The Hutchinson native and former HCC player is the Blue Dragons' 13th head coach in 78 seasons of basketball.

HCC is the fourth head coaching stop - all at the junior college level - in Swanson's career. Swanson is 200-84 in eight-plus seasons as a juco head coach. He is now 64-27 at HCC. He is in 10th place on the HCC career coaching list.

He is the seventh HCC head coach to win 20 games in each of his first two seasons.

Swanson was the 12th straight HCC head coach to win 20 games in his first season. He led the Blue Dragons to a 23-8 record in 2006-07. Last season, Swanson guided the Blue Dragons to a 23-9 record and a second-place finish in the Jayhawk West, plus a quarterfinal berth in the Region VI Tournament.

Swanson was 74-24 in three seasons at St. Catharine's College, 16-14 in one season at Marshalltown, Iowa and 46-19 in two seasons at Garden City. Swanson led the 2004-05 Garden City team to its first conference championship in more than 50 years.

Swanson also has NCAA Division I coaching experience as an assistant at the University of Wisconsin-Milwaukee for Bruce Pearl (who is now at Tennessee).

Swanson's 2002-03 UWM team went 24-8, won the Horizon League crown and earned a trip to the NCAA Tournament for the first time in the school's 107-year history.

UWM was a No. 12-seed and just missed upsetting No. 5-seed Notre Dame 70-69.

Swanson, who graduated from Hutchinson High School, was a redshirt on the Blue Dragons' 1988 NJCAA national championship team, played in 1989 and was a graduate assistant for head coach David Farrar in 1990.



SWANSON - BY THE NUMBERS

Career record (8th season)200-84
Record at HCC (3rd season)64-27
Record at Sports Arena50-8
Record on opposing floors9-18
Record on neutral courts5-1
Record vs. Jayhawk West teams28-18
Record vs. Jayhawk East teams13-7
Record vs. Non-conference teams24-2
Record vs. Nationally ranked teams11-5
Record in Jayhawk Shootout5-1
Record in Region VI Tournament1-2
Record in overtime games1-2
Record in games of 9 points or less20-12
Record in games of 10 points or more44-15

SWANSON'S YEAR-BY-YEAR RECORD

Year	School	Record	Pct.
1997-98	St. Catharine College24-7	.774
1998-99	St. Catharine College24-9	.727
1999-00	St. Catharine College26-8	.765
2000-01	Marshalltown CC16-14	.533
2003-04	Garden City23-9	.735
2004-05	Garden City23-10	.697
2006-07	Hutchinson23-8	.742
2007-08	Hutchinson23-9	.719
2008-09	Hutchinson18-10	.643
Totals		200-84	.704

SERIES HISTORY WITH PRATT

This will be the 148th meeting between Hutchinson and Pratt. The Blue Dragons have a decisive 125-22 series advantage. Pratt, though, had won four straight and 6 of the last 8 games played in the series before HCC swept the season series last season.

The 125 wins are the most for the Blue Dragons against any single opponent in HCC men's basketball history. The 147 games played are the most the Blue Dragons have played against a single team. Butler is the only team that Hutchinson has played more in a single series.

Hutchinson is 59-11 in games played in Hutchinson and 52-7 at the Sports Arena. HCC is 54-10 in games played in Pratt and the Dragons have a 10-1 advantage in Region VI matchups.

Earlier this season, Hutchinson won the first meeting with Pratt, defeating the Beavers 83-66 at the Sports Arena.

Last season, the Blue Dragons defeated Pratt 84-66 at the Sports Arena and then won at Pratt 72-61.

HCC'S ALL-TIME SERIES RESULTS WITH PRATT

1/27/39.....Hutch.....W, 48-14
2/39.....Pratt.....W, 47-14
1/24/40.....Hutch.....W, 37-28
2/18/40.....Pratt.....W, 61-31
1/22/41.....Hutch.....W, 44-23
2/28/41.....Pratt.....W, 37-31
1/9/42.....Hutch.....L, 22-33
2/17/42.....Pratt.....W, 41-33
1/47.....Pratt.....W, 66-34
2/47.....Hutch.....W, 67-29
12/47.....Pratt.....W, 37-34
2/48.....Hutch.....L, 40-45, OT
12/18/48.....Hutch.....L, 35-42
1/7/49.....Pratt.....L, 40-44
2/22/49.....Hutch.....W, 67-52
12/20/49 Garden City (N) W, 65-47
1/20/50.....Pratt.....W, 51-47
2/22/50.....Hutch.....W, 52-47
12/12/50 Garden City (N) W, 64-42
1/19/51.....Pratt.....W, 68-50
2/26/51.....Hutch.....W, 68-51
1/15/52.....Hutch.....L, 54-60
2/15/52.....Pratt.....W, 56-55
1/30/53.....Pratt.....L, 50-54
2/17/53.....Hutch.....W, 97-62
12/18/53.....Pratt.....W, 71-64
1/29/54.....Hutch.....W, 79-67
1/18/55.....Hutch.....W, 89-73
2/22/55.....Pratt.....W, 70-67
3/2/55.....(R6).....W, 75-73
1/23/56.....Pratt.....W, 66-59
2/14/56.....Hutch.....W, 83-63
2/28/56.....(R6).....W, 74-67
1/57.....Hutch.....W, 74-48
2/57.....Pratt.....W, 71-59
1/14/58.....Pratt.....W, 84-52
2/14/58.....Hutch.....W, 83-74
1/16/59.....Pratt.....W, 81-80
2/20/59.....Hutch.....W, 70-64
3/4/59.....(R6).....L, 50-69
1/16/60.....Pratt.....W, 62-52
2/2/60.....Hutch.....W, 61-52
1/7/61.....Pratt.....W, 68-62
2/13/61.....Hutch.....W, 87-68
3/3/61.....(R6).....W, 44-35
1/9/62.....Pratt.....W, 65-60
2/6/62.....Hutch.....W, 77-74
1/8/63.....Hutch.....W, 89-61
2/8/63.....Pratt.....W, 82-75
1/7/64.....Pratt.....L, 90-91
2/28/64.....Hutch.....W, 107-77
1/15/65.....Hutch.....W, 88-81
2/27/65.....Pratt.....W, 86-84
1/1/66.....Hutch.....L, 76-84
2/4/66.....Pratt.....W, 95-84
2/29/66.....(R6).....W, 72-66
1/10/67.....Hutch.....W, 89-68
2/7/67.....Pratt.....W, 92-80
1/68.....Pratt.....W, 107-77

Record - 125-22
In Hutchinson - 59-11
At Sports Arena - 52-7
In Pratt - 54-10
Neutral Court - 2-0
Region VI - 10-1
Most consecutive wins: 21
 (Twice)
Most consecutive losses: 4
Recorded overtimes: 1-1
Most points scored in one game: 123 (HCC 123, Pratt 91 in Jan, 1993 in Hutch)
Highest combined score: 222 (HCC 113, Pratt 109 in OT/Region VI Tournament in March 1969)
Largest winning margin: 36 (Twice - HCC won 75-39 on Feb. 11, 2002 at Hutch; HCC won 75-39 on Feb. 8, 2003 at Hutch)
Largest losing margin: 19 (Pratt won 69-50 in Region VI Tournament in March 1959)

2/81.....Pratt.....W, 98-86
1/82.....Hutch.....W, 62-50
2/82.....Pratt.....W, 68-64
1/83.....Hutch.....W, 77-63
2/83.....Pratt.....W, 49-46
1/84.....Pratt.....W, 82-62
2/84.....Hutch.....W, 66-65
1/85.....Hutch.....W, 77-72
2/85.....Pratt.....W, 70-54
1/86.....Hutch.....W, 78-67
2/86.....Pratt.....W, 75-60
3/86.....(R6).....W, 83-64
1/87.....Hutch.....W, 88-65
2/87.....Pratt.....W, 66-63
1/20/88.....Hutch.....W, 76-68
2/13/88.....Pratt.....L, 60-65
1/89.....Hutch.....W, 69-58
2/89.....Pratt.....L, 50-51
1/90.....Pratt.....W, 78-73
2/90.....Hutch.....W, 77-54
1/91.....Pratt.....W, 92-81
2/91.....Hutch.....W, 88-61
1/92.....Hutch.....W, 87-77
2/92.....Pratt.....W, 94-84
1/93.....Hutch.....W, 123-91
2/93.....Pratt.....W, 85-67
1/94.....Pratt.....W, 83-74
2/94.....Hutch.....W, 73-54
3/94.....(R6).....W, 100-83
1/95.....Hutch.....W, 74-68
2/95.....Pratt.....W, 85-65
1/96.....Hutch.....W, 78-61
2/96.....Pratt.....W, 78-62
1/97.....Pratt.....W, 56-41
2/97.....Hutch.....W, 79-66
1/17/98.....Pratt.....W, 81-77
2/11/98.....Hutch.....W, 78-48
1/23/99.....Hutch.....W, 92-57
2/20/99.....Pratt.....W, 98-58
1/22/00.....Pratt.....L, 61-62
2/19/00.....Hutch.....W, 78-66
1/31/01.....Hutch.....W, 75-68
2/28/01.....Pratt.....W, 89-74
2/11/02.....Hutch.....W, 75-39
2/27/02.....Pratt.....W, 69-67
1/11/03.....Pratt.....W, 64-57
2/8/03.....Hutch.....W, 75-39
1/10/04.....Hutch.....W, 89-73
2/7/04.....Pratt.....L, 72-77
1/8/05.....Pratt.....L, 69-78
2/9/05.....Hutch.....W, 75-71
1/7/06.....Hutch.....L, 68-75
2/8/06.....Pratt.....L, 61-70
1/17/07.....Pratt.....L, 80-82
2/17/07.....Hutch.....L, 62-73
1/16/08.....Hutch.....W, 84-66
2/16/08.....Pratt.....W, 72-61
1/28/09.....Hutch.....W, 83-66
2/68.....Hutch.....W, 106-103
3/68.....(R6).....W, 94-66
1/69.....Hutch.....L, 86-101
2/69.....Pratt.....W, 95-81
3/69.....(R6)W, 113-109, OT
3/69.....(R6).....W, 91-90
1/70.....Pratt.....L, 77-79
2/70.....Hutch.....L, 74-80
1/71.....Hutch.....W, 93-69
2/71.....Pratt.....W, 89-82
12/71.....Hutch.....W, 101-94
2/72.....Pratt.....W, 100-94
1/73.....Pratt.....W, 78-57
2/73.....Hutch.....W, 117-89
1/73.....Pratt.....W, 100-86
1/74.....Hutch.....W, 83-75
1/75.....Pratt.....W, 105-93
2/75.....Hutch.....W, 102-81
1/76.....Hutch.....W, 97-79
2/76.....Pratt.....W, 82-80
1/77.....Pratt.....W, 77-73
2/77.....Hutch.....W, 99-75
1/78.....Pratt.....W, 84-82
2/78.....Hutch.....L, 75-93
3/78.....(R6).....W, 87-71
1/79.....Hutch.....W, 92-75
2/79.....Pratt.....W, 61-55
2/80.....Pratt.....W, 68-60
2/80.....Hutch.....W, 78-73
1/81.....Hutch.....W, 94-79

Tonight's Rosters

HUTCHINSON BLUE DRAGONS (17-10, 7-7)

No.	Player	Pos.	Ht.	Yr.	Hometown
3	Darius Johnson-Odom	G	6-2	Fr.	Raleigh, NC
15	Devon McBride	G	6-3	So.	Richmond, VA
21	Cliff Dixon	F	6-10	So.	Suitland, MD
22	Lazarus Johnson	G	6-3	Fr.	Miami, FL
23	Javari Williams	F	6-5	R-Fr.	Brampton, Ontario
24	Tom Shirley	F	6-7	Fr.	Grantville, KS
25	Cody Beaton	G	6-0	Fr.	Hutchinson, KS
32	Chris Banks	G	6-2	So.	Fort Scott, KS
33	Austin Bond	G	6-0	So.	Kansas City, KS
34	Dominique Rutledge	F	6-8	Fr.	Newark, NJ
42	Ryan Douvier	F	6-6	So.	Newton, KS

Head Coach - Ryan Swanson

Assistant Coaches - Dave Brown, Ryan Freeberg

PRATT BEAVERS (17-11, 7-7)

No.	Player	Pos.	Ht.	Yr.	Hometown
1	Dernodo Eiland	F	6-6	So.	Chicago, IL
3	Tyrone Gordon	G	6-2	Fr.	Milwaukee, WI
4	Julius Hearn	G	6-1	So.	Chicago, IL
10	LaShawn Kelley	G	6-0	Fr.	Topeka, KS
11	Will Brown	G	6-5	Fr.	Syracuse, KS
13	Bryce Gooch	F	6-7	Fr.	Belle Plaine, KS
15	Michael Tyler	F	6-5	So.	Milwaukee, WI
20	Abram Lollar	G	5-8	So.	Wichita, KS
22	Kenny Bates	G	6-0	Fr.	Wichita, KS
32	Illiwa Baldwin	C	6-11	Fr.	Brisbane, Australia
34	Brett Crittenden	F	6-4	So.	Tribune, KS
42	David Cesmat	F	6-6	Fr.	Greensburg, KS

Head Coach - Trevor Rolfs

Assistant - Jesse Shaw

Statistical Comparison

	HCC	PCC
Offensive Average	77.9	78.5
Defensive Average	68.5	70.6
Offensive Field Goal Pct.	46.2	43.8
Offensive 3-Point Pct.	34.9	33.7
Free-throw Pct.	62.7	58.8
Defensive Field Goal Pct.	38.3	43.9
Defensive 3-Point Pct.	27.6	29.9
Opponent's Free-throw Pct.	65.6	65.6
Rebounds For	43.1	40.2
Rebounds Against	38.5	38.0
Offensive Rebounds For	14.5	14.6
Offensive Rebounds Against	15.4	11.0
Total Assists	456	481
Assists Per Game	16.3	17.2
Total Turnovers	520	435
Turnovers Per Game	18.6	15.5
Opponent's Turnovers	477	491
Opp. Turnovers Per Game	17.0	17.5
Total Blocked Shots	149	46
Blocked Shots Per Game	5.3	1.6
Total Steals	231	304
Steals Per Game	8.3	10.9

SCOUTING PRATT

The Beavers are one of the higher scoring teams in Region VI this season, ranked sixth with a scoring average 78.5 points per game.

Pratt has four players averaging in double figures, led by Michael Tyler's 16.8 point-per-game average. Tyler is shooting 52.9 percent from the field and 39.6 percent from 3-point range. Tyler leads Region VI in rebounding at 11.8 boards per game.

Also in double figures are Demondo Eiland (13.3 ppg), who is a 35-percent 3-point shooter with 64 makes this season. Illiwa Baldwin averages 10.1 points and shoots 58.6 percent from the field. Julius Hearn averages 10.0 points per game.

As a team, the Beavers shoot 43.8 percent, including 33.7 percent from 3-point range. Pratt is a 58.8 percent free-throw shooting team and is a plus-2.2 in rebounding margin.

Defensively, Pratt allows 70.6 points per game. Opposing teams are shooting 43.9 percent overall and 29.9 percent from 3-point range. The Beavers force 17.5 turnovers per game. Hearn and Tyrone Gordon both have more than 50 steals each this season.

FIRST MEETING WITH PRATT

Freshman Darius Johnson-Odom snapped out of a three-game offensive malaise and the Blue Dragons rebounded from a tough loss just three days earlier as the Blue Dragons defeated Pratt 83-66 on Wednesday night at the Sports Arena.

Johnson-Odom, which had averaged only eight points per game over his last three games, broke out with 37 points on 10 of 15 overall shooting and a team and individual season-high 14 of 19 from the free-throw line. Johnson-Odom snapped an 0 of 15 slump from behind the 3-point arc by hitting 3 of 5 from distance.

The 37 points ties for the sixth-best single-game effort by a Blue Dragon. Tyrone Jones (1987), William Davis (1988) and Ben Davis (1994) all had 37-point games.

HCC (16-5, 5-2 Jayhawk West) proved right from the opening tip that it was ready to play on Wednesday night.

The Blue Dragons held Pratt scoreless for the first 6 minutes, 2 seconds and to just 20 first-half points on 9 of 44 shooting (20.5 percent). Meanwhile, HCC shot a little better than 48 percent (25 of 47) in the first 20 minutes and built leads as large as 23 points before taking a 41-20 lead at halftime.

Pratt managed to make things interesting. Using full-court pressure, the Beavers forced 15 second-half turnovers and pulled within 68-60 with 5:04 to play. Hutch finished off the Beavers with a 10-2 run over the final 2:34 of the game.

Devon McBride had 15 points and freshman Dominique Rutledge had his fifth double-double of the season with 10 points and a season-high-tying 13 rebounds.

The Dragons shot 50 percent of better for the eighth time this season, shooting 53.2 percent (25 of 47), including 5 of 12 from 3-point range. HCC struggled from the line, hitting only 28 out of a season-high 48 attempts. The Dragons outrebounded Pratt 53-45, but committed 25 turnovers and surrendered 24 offensive rebounds.

Pratt was limited to a Blue Dragon defensive season-best 28.7 percent shooting (35 of 87) and was only 3 of 28 from 3-point range. The Beavers (13-8, 3-4) were 13 of 19 from the free-throw line and committed just 13 turnovers and forced 15 steals.

Michael Tyler had a double-double with 18 points and 15 rebounds. Tyrone Gordon also had 18 points and Demondo Eiland had 12 points for Pratt.

LAST GAME RECAP: COLBY

Freshman Darius Johnson-Odom led by Blue Dragons in double figures as Hutchinson clinched a spot in the postseason and gave head coach Ryan Swanson his 200th career coaching victory in an 89-70 victory over Colby on Saturday night at the Sports Arena.

Hutchinson (18-10, 7-7 Jayhawk West) all but eliminated Colby from playoff contention with a 19-point victory that avenged an earlier 23-point loss to the Trojans in January. HCC clinched a spot for the Region VI Tournament, but can still finish anywhere from third to seventh with two games to play.

Swanson won his 200th game in his ninth season as a junior college head coach. He is 200-84.

Johnson-Odom knocked down three 3-point goals and finished with 21 points to go along with four assists and two steals.

Redshirt freshman Javari Williams had a career game, finishing with 15 points on 7 of 10 shooting. He also had nine rebounds, five assists, two steals and a blocked shot.

Also in double figures were freshman Tom Shirley with 13 points, while freshman Dominique Rutledge and sophomore Austin Bond had 10 points each.

HCC shot 49.3 percent (35 of 71) and tied a season high with 11 3-pointers (11 of 25). HCC was 8 of 14 from the free-throw line. The Dragons outrebounded Colby 48-34 and had 25 assists on 35 made baskets against the Trojans.

(Continued on Next Page)

Region VI Division I Men's Standings

Jayhawk West	League	Overall
Barton	11-3	24-4
Butler	10-4	21-7
Garden City	8-6	18-10
Seward County	8-6	21-7
Hutchinson	7-7	18-10
Pratt	7-7	17-11
Cloud County	6-8	17-11
Dodge City	4-11	11-18
Colby	3-12	5-24
Jayhawk East	League	Overall
Coffeyville	10-2	21-7
Cowley College	9-3	24-4
Independence	9-4	17-12
Neosho County	7-5	16-12
Allen County	7-6	13-16
Kansas City, KS	3-9	9-19
Fort Scott	3-10	10-18
Labette	2-11	7-22

Wednesday, February 25

Barton at Colby, 7:30 p.m.
Butler at Cloud County, 8 p.m.
Garden City at Seward County, 8 p.m.
Hutchinson at Pratt, 8 p.m.
Coffeyville at Labette, 7:30 p.m.
Kansas City at Fort Scott, 7 p.m.
Neosho County at Cowley, 7:30 p.m.

2008-09 NJCAA Division I Basketball Poll

Team	2008-09 Record
1. Chipola College, Fla.	28-1
2. Indian Hills CC, Iowa	28-1
3. Miami-Dade College, Fla.	26-2
4. Southwest Tennessee	21-1
5. Southwestern Illinois	27-2
6. Midland College, Texas	26-3
7. Shelton State CC, Ala.	27-2
8. South Plains College, Texas	24-3
9. Monroe College, N.Y.	28-2
10. North Dakota State College of Science	27-2
11. Southeastern Illinois	23-3
12. Barton	24-4
13. Salt Lake CC, Utah	24-4
14. North Idaho	25-3
15. Western Oklahoma State	23-4
16. Collin County, Texas	23-4
17. Cowley College	24-4
18. Arizona Western College	24-4
19. Jones County CC, Miss.	21-4
20. Southeastern Iowa	24-6
21. Wallace State CC, Ala.	25-4
21. South Georgia Technical College	23-6
23. Three Rivers CC, Mo.	24-4
23. Lon Morris College, Texas	23-5
25. Allegany College of Maryland	25-5

Others receiving votes: Cochise CC, Ariz. (22-6); Polk CC, Fla. (24-5); Western Nebraska (23-5); College of Southern Idaho (20-8); Tyler Junior College (21-5); Chattanooga State, Tenn. (23-5); McLennan College, Texas (23-5); Sheridan College, Wyo. (22-6).

Defensively, the Blue Dragons held Colby to 38.9 percent shooting (28 of 72), including 9 of 27 from 3-point range. The Trojans were 5 of 6 from the free-throw line.

Colby's Shamar Acqay, who went off for 38 points, 20 rebounds and nine steals against HCC in January, fouled out with 17:39 to play in the second half. He finished with 14 points and five rebounds.

Arius Stephenson and Ethan Stover had 15 points each for Colby. Erick Pequero added 11 points.

BLUE DRAGONS IN NJCAA STATISTICAL LEADERS

- Freshman guard Darius Johnson-Odom is ranked No. 17 in scoring at 21.2 points per game.

- The Blue Dragons are ranked No. 31 in the NJCAA in scoring defense at 68.5 points per game.

DRAGONS IN NATIONAL POLL

After being ranked as high as No. 15 in November in the NJCAA National Division I men's basketball poll, the Blue Dragons remain out of the latest poll, which was released on Wednesday.

A stretch of three losses in four games sent the Blue Dragons tumbling from the rankings. The Dragons were still receiving votes in the final November poll, but back-to-back losses to Allen County and Coffeyville knocked HCC completely out.

For only the fourth time since 2001, the Blue Dragons were ranked in a regular-season poll at No. 17. One week later, Hutchinson climbed to No. 15. HCC opened the 2008-09 season ranked No. 20. It's the second-straight season HCC starts ranked in the preseason.

The 2007-08 Blue Dragons opened ranked 26th. HCC was unranked in 2005. The 2003 poll had HCC starting 26th and the 2004 poll had HCC 13th. They were unranked in 2002 and 2001.

Preseason PollNo. 20
November 18No. 17
November 25No. 25
December 2RV
Dec. 9/Feb. 24Unranked

DRAGON DEFENSE

GETTING IT DONE AGAIN

After a season where they set a new program record for defensive field goal percentage, the 2008-09 Blue Dragons are at it again on the defensive end of the floor.

Through 28 games this season, the 2008-09 Blue Dragons are nearly on pace to break the same record they broke last season. HCC is allowing opposing teams to shoot just 38.3 percent this season. That mark currently leads Region VI.

The Blue Dragons are allowing just 68.5 points per game, which ranks seventh in Region VI and 35th in the NJCAA. Only 11 of 28 opponents have shot better than 40 percent and two have just shot 50 percent or better.

Opposing teams are shooting just 27.6 percent from 3-point range and are committing 17.0 turnovers per game against the Dragons.

Last year's Blue Dragons allowed opponents just 38.1 percent shooting from the floor. They tied for second in the Jayhawk West in points allowed at 68 points per game.

AFTER INJURY, RUTLEDGE STARTS TO ROLL

Hampered by a nagging injury in the preseason, freshman forward Dominique Rutledge has begun to show why he was recruited to be a Blue Dragon.

The 6-foot-8 freshman forward was inconsistent through November, but once the calendar flipped to December, Rutledge has been a main cog in the Blue Dragon machine.

With only one game scoring in double figures in his first 10, Rutledge has scored in double figures in 8 of his last 12 games, getting a seven-game streak in double figures snapped on Jan. 14 at Butler.

Rutledge has a season-high 22 against Central Nebraska on Dec. 13. He was 10 of 18 from the field against the Raiders.

Before an off game against Dodge City, in the 11 previous games Rutledge has averaged 12.4 points per game and has shot 50.1 percent from the field. He's also averaged 8.2 rebounds.

He posted four double-doubles this season.

1. 2008-0938.3%
2. 2007-0838.4%
3. 2003-0438.9%
4. 2002-0339.0%
5. 1993-9439.7%
6. 1988-8940.3%
7. 1989-9040.3%
8. 1971-7240.8%
2006-0740.8%
9. 1995-9640.9%
10. 1972-7341.1%

Miscellaneous Statistics

Record at home15-3
Record on road2-7
Record on neutral courts1-0
Largest margin of victory57
Largest margin of defeat26
Largest lead surrendered in loss11
Largest halftime lead surrendered in loss9
Largest deficit overcome to win7
Largest halftime deficit overcome to win4
Record when ahead at halftime16-2
Record when behind at halftime1-8
Record when tied at halftime1-0
Record when shooting 50 pct. or better8-1
Record when shooting less than 50 pct.10-9
Record when opp. shoots 50 pct. or better0-2
Record when opp. shoots less than 50 pct.18-8
Record when outshooting opponent18-1
Record when outshot by opponent0-9
Record when outrebounding opponent17-3
Record when outrebounded by opponent1-6
Record when rebounding is even0-1
Record in overtime0-1
Record when scoring 80 points or more11-1
Record when scoring 79 points or fewer7-9
Record when allowing 80 points or more2-3
Record when allowing 79 points or fewer16-7
Times HCC scores 100 points or more1
Times HCC scores 90-99 points3
Times HCC scores 80-89 points8
Times HCC scores 70-79 points9
Times HCC scores 60-69 points4
Times HCC scores 50-59 points3
Times HCC scores 40-49 points0
Times HCC scores 30-39 points0
Times HCC scores 29 points or fewer0
Times HCC shoots 60 percent or better2
Times HCC shoots 50 to 59 percent7
Times HCC shoots 40 to 49 percent15
Times HCC shoots 30 to 39 percent4
Times HCC shoots 29 percent or less0
Times opponent scores 100 points or more0
Times opponent scores 90-99 points1
Times opponent scores 80-89 points4
Times opponent scores 70-79 points12
Times opponent scores 60-69 points4
Times opponent scores 50-59 points4
Times opponent scores 40-49 points3
Times opponent scores 30-39 points0
Times opponent scores 29 points or fewer0
Times opponent shoots 60 percent or better0
Times opponent shoots 50 to 59 percent2
Times opponent shoots 40 to 49 percent9
Times opponent shoots 30 to 39 percent14
Times opponent shoots 29 percent or less3

DRAGONS BANKING ON CHRIS BANKS AS A DEFENSIVE STOPPER

When you look at a Blue Dragon boxscore, don't look at freshman Chris Banks' offensive stats to prove how productive he was. But do check out the people he guarded and that will give you an indication of Banks' game.

Banks, a sophomore from Fort Scott, has been a true defensive stopper since joining the lineup on Nov. 22.

Banks has been in charge of defending some of the top opposing offensive players. Against Central Nebraska, The Raiders Aaron Morrissey was averaging almost 24 points per game. Banks held him to a mere 4 of 16 shooting and 10 points.

Against Dodge City's Rodney Clinkscales, who averaged 19.6 points per game, Banks had the primary defensive assignment. Banks had a major part in holding Clinkscales to just 3 of 15 shooting and a season-low 11 points.

JOHNSON-ODOM IS NATIONAL PLAYER OF THE WEEK

Freshman guard Darius Johnson-Odom was named NJCAA National Division I Player of the Week after a spectacular performance in the first weekend of December at the Jayhawk Shootout in Coffeyville.

Johnson-Odom broke the single-game school record with a 46-point outing in a 90-86 loss to Coffeyville on Friday night. The old record belonged to Richard Morsden, who scored 45 points against Dodge City in 1972.

For the game, Johnson-Odom hit 14 of 26 shots, 8 of 17 from 3-point range, and was 10 of 10 from the free-throw line. Johnson-Odom also had nine rebounds, four assists and one steal in 38 minutes, 50 seconds. Johnson-Odom carried the team, especially in the last 12 minutes, scoring 32 points during that span.

Two days later, Johnson-Odom scored 32 points in a 78-48 victory over Kansas City. Johnson-Odom hit 12 of 17 shots, 3 of 7 from long range and was 5 of 6 from the free-throw line. Johnson-Odom had a double-double with 10 rebounds, adding three assists, and a steal in 31:52 of playing time.

Johnson-Odom averaged 39 points per game, hitting 26 of 43 overall shots (60.5 percent), 11 of 24 from 3-point range (45.8 percent) and 15 of 16 from the free-throw line (93.8 percent).

HOME COOKING GOOD TO BLUE DRAGONS

The Blue Dragons have always enjoyed a strong home-court advantage in the 7,000-seat Sports Arena. With their 70-60 victory over Cloud County on Jan. 14, 2006, the Blue Dragons earned their 700th regular-season victory in the famed basketball venue.

Moving into the Sports Arena in the 1952-53 season, the Blue Dragons have amassed a 753-133 record in this building.

In the 53 years that Hutchinson has called the Sports Arena home; the Blue Dragons have averaged 13.1 wins at home. The 2007-08 team went 17-3 at home.

They went undefeated through an entire home season seven times (1958-59, 1959-60, 1973-74, 1974-75, 1981-82, 1987-88, 2003-04).

Before the Sports Arena, HCC played at Memorial (Convention) Hall from 1928 to 1952 where the Blue Dragons were 112-50.

FORWARD CLIFF DIXON REINSTATED FOR SECOND SEMESTER

The HCC coaching staff has reinstated sophomore forward Cliff Dixon (Suitland, MD) for the second semester.

Dixon had been suspended since Nov. 19 for conduct detrimental to the team. He missed four games during his suspension. Before the suspension, Dixon was averaging 15.9 points and 7.1 rebounds per game.

In his return to the line-up on Dec. 31, Dixon scored just four points on 2 of 3 shooting, but had eight rebounds and season highs of five assists, three blocked shots and three steals.

Since returning to the lineup, Dixon is averaging 12.6 points per game, shooting 52.8 percent, and 8.2 rebounds per game.

NOTING THE BLUE DRAGONS

- Tom Shirley is the brother of former Iowa State standout Paul Shirley.
- The last time that Hutchinson allowed 100 points in a game was Jan. 24, 2004, when the Dragons gave up triple digits in a 100-94 loss to Barton County. That's a streak of 261 games.

Blue Dragon Region VI Team Rankings

Category	Rank	Avg./Pct.
Scoring Offense	7	78.7
Scoring Defense	7	68.7
Scoring Margin	5	+10.0
Field Goal Percentage	6	46.5
3-Point Percentage	10	34.2
Free-Throw Percentage	6	63.5
Defensive Field Goal Pct.	2	38.6
Defensive 3-Point Pct.	1	27.6
Rebounds	3	43.36
Rebounds Against	12	37.82
Rebounding Margin	6	+5.54
Assists	6	16.32
Steals	11	8.40
Blocked Shots	2	5.36

Blue Dragon Region VI Individual Rankings

SCORING

2. Darius Johnson-Odom.....21.2 ppg

FIELD-GOAL PERCENTAGE

No players listed

3-POINT PERCENTAGE

No players listed

3-POINT GOALS GAME PER GAME

10. Darius Johnson-Odom.....2.04/Gm

FREE-THROW PERCENTAGE

6. Darius Johnson-Odom.....79.1%

REBOUNDING

7. Dominique Rutledge.....7.80 rpg

8. Cliff Dixon7.65 rpg

ASSISTS

5. Darius Johnson-Odom.....4.91 apg

BLOCKED SHOTS

5. Dominique Rutledge1.43 bpg

6. Cliff Dixon.....1.30 bpg

STEALS

No players listed

SEASON-OPENING SUCCESS

The Blue Dragons have been hard to beat on opening night over the years. Hutchinson is 59-19 in season openers, winning 11 of the last 12 opening games. Hutchinson is 64-14 in home openers.

The highest point total for HCC on opening night was 115 points scored against Joliet Junior College in a 115-103 victory in 1977. Hutch has surpassed the century mark five times on opening night: 102 vs. York College in 1965; 115 vs. Joliet in 1977, 101 vs. Western Nebraska in 1990, 107 vs. Malcolm X I 1997 and 100 vs. Malcolm X in 1998.

The largest opening night winning margin was 58 set in 1992, an 88-32 win over Hesston College.

2008-09 BLUE DRAGONS BRING BACK LITTLE EXPERIENCE

Even in Ryan Swanson's first season two years ago at HCC he had more returning experience than he does heading into the 2008-09 season.

The Dragons start as the preseason favorite to win the Jayhawk Conference Western Division and are ranked 20th in the preseason NJCAA Division I poll.

Only two players return with court time with the Blue Dragons from last season.

Those two players – guard Austin Bond and forward Ryan Douvier – played a combined total of 246 minutes.

Bond is a 6-foot-3 guard from Kansas City, Kan. (Piper High School). His freshman season was extremely limited because of injuries. In 13 games, Bond averaged 2.9 points, shooting 31.3 percent from 3-point range.

Douvier is a 6-6 forward from Newton. He saw limited playing time as a freshman, averaging 0.6 points and 0.6 rebounds.

Swanson will have a pair of talented transfers and a group of untested freshmen to try and lead the Blue Dragons to their first Jayhawk West championship since 2004 and the first Region VI crown since 1997.

2008-09 JAYHAWK WEST PREDICTIONS

1. Hutchinson
2. Cloud County
3. Barton
4. Garden City
5. Seward County
6. Dodge City
7. Pratt
8. Butler
9. Colby

JAYHAWK WEST PRESEASON PREDICTIONS

The Blue Dragons were picked to win the 2009 Jayhawk West championship in a poll of league coaches released at the annual Jayhawk Conference Media Day on Oct. 13 in Wichita.

Hutchinson, Cloud County and Barton were the top three picked by the coaches.

Last season, HCC was picked to finish second in the preseason poll.

Cowley College was the prohibitive favorite to win the Jayhawk East in 2009.

BLUE DRAGON FAMILY LOSES ONE OF ITS GREATS - CORTEZ BARNES

Cortez Barnes, one of the top 3-point shooters and all-around players in HCC men's basketball history, died in a car accident in Texas on Sept. 21, 2008.

Barnes, an All-Jayhawk Conference performer who played at HCC in 1990-91 and 1991-92, was on his way to Wichita from his home in Dallas when the accident occurred.

Barnes, 36, and his wife, Jamai, had six children.

Barnes came to HCC before the 1990-91 season for coach Dave Farrar after a stellar prep career at Wichita Heights.

A versatile 6-foot-7 forward, Barnes became the program's career leader in 3-point field goals, tallying 122 for his career. That mark is still third on the career chart today.

Barnes scored 994 career points at HCC, which ranks 12th on the career chart. He's 10th in made field goals (390) and third in 3-point attempts (350).

During his freshman season in 1990-91, Barnes averaged 16.3 points per game, shooting 44 percent from the field overall and 38.8 percent from behind the 3-point arc. The 62 3-pointers are the sixth-most in single-season history and fourth most by a freshman. The 38.8 percent efficiency ranks sixth on the single-season charts and is tied for seventh on the freshman chart. His 489 points rank seventh on the freshman chart. His scoring average is tied for sixth on the freshman chart.

The Blue Dragons went 21-9 in 1991, Farrar's final season at Hutchinson. Under new head coach Steve McClain, Barnes averaged 14.8 points and hit 31.6 percent from 3-point range. The Dragons were 27-7 and finish as Region VI runner-up to eventual national runner-up Butler County.

Blue Dragon Season Double-Doubles

Cliff Dixon (season - 7; career 21)

Nov. 8 vs. Weatherford College	17 pts./12 rebs.
Jan. 3 vs. Seward County	14 pts./10 rebs.
Jan. 7 vs. Dodge City	18 pts./10 rebs.
Jan. 10 vs. Garden City	11 pts./11 rebs.
Jan. 21 vs. Barton	17 pts./11 rebs.
Feb. 11 vs. Butler	23 pts./12 rebs.
Feb. 21 vs. Barton	14 pts./12 rebs.

Darius Johnson-Odom (season - 2; career 2)

Nov. 22 vs. Highland	22 pts./15 rebs.
Dec. 7 vs. Kansas City	32 pts./10 rebs.

Dominique Rutledge (season - 5; career 5)

Dec. 5 vs. Coffeyville	10 pts./10 rebs.
Dec. 7 vs. Kansas City	14 pts./10 rebs.
Jan. 3 vs. Seward County	15 pts./13 rebs.
Jan. 21 vs. Barton	12 pts./10 rebs.
Jan. 28 vs. Pratt	10 pts./14 rebs.

40-Point Games

46 - Darius Johnson-Odom vs. Coffeyville	Dec. 5, 2008
--	--------------

30-Point Games

37 - Darius Johnson-Odom vs. Pratt	Jan. 28, 2008
32 - Darius Johnson-Odom vs. Kansas City	Dec. 7, 2008
30 - Darius Johnson-Odom vs. Allen County	Nov. 25, 2008

20-Point Games

29 - Cliff Dixon vs. Garden City	Feb. 7, 2009
28 - Darius Johnson-Odom vs. Garden City	Jan. 10, 2009
27 - Cliff Dixon vs. Clarendon	Nov. 14, 2008
25 - Darius Johnson-Odom vs. Allen County	Nov. 11, 2008
24 - Darius Johnson-Odom vs. McCook	Nov. 15, 2008
24 - Darius Johnson-Odom vs. Dodge City	Jan. 7, 2009
24 - Devon McBride vs. Butler	Jan. 14, 2009
24 - Cliff Dixon vs. Cloud County	Jan. 31, 2009
24 - Darius Johnson-Odom vs. Dodge City	Feb. 4, 2009
23 - Devon McBride vs. Sterling College JV	Nov. 6, 2008
23 - Darius Johnson-Odom vs. Fort Scott	Nov. 7, 2008
23 - Devon McBride vs. Allen County	Nov. 25, 2008
23 - Darius Johnson-Odom vs. Garden City	Feb. 7, 2008
23 - Cliff Dixon vs. Butler	Feb. 11, 2009
22 - Darius Johnson-Odom vs. Highland	Nov. 22, 2008
22 - Dominique Rutledge vs. Central Nebraska	Dec. 13, 2008
22 - Darius Johnson-Odom vs. Friends JV	Dec. 31, 2008
22 - Darius Johnson-Odom vs. Barton	Feb. 21, 2009
21 - Darius Johnson-Odom vs. Seward County	Jan. 3, 2009
21 - Devon McBride vs. Colby	Jan. 25, 2009
21 - Cliff Dixon vs. Seward County	Feb. 2, 2009
21 - Darius Johnson-Odom vs. Colby	Feb. 21, 2009
21 - Darius Johnson-Odom vs. St. Mary JV	Oct. 31, 2008
20 - Darius Johnson-Odom vs. Central Nebraska	Dec. 13, 2008

10-Rebound Games

15 - Darius Johnson-Odom vs. Highland	Nov. 22, 2008
13 - Javari Williams vs. Coffeyville	Dec. 5, 2008
14 - Dominique Rutledge vs. Pratt	Jan. 28, 2009
13 - Dominique Rutledge vs. Seward County	Jan. 3, 2009
13 - Dominique Rutledge vs. Cloud County	Jan. 31, 2009
12 - Tom Shirley vs. Labette	Nov. 1, 2008
12 - Cliff Dixon vs. Weatherford College	Nov. 8, 2008
12 - Cliff Dixon vs. Butler	Feb. 11, 2009
12 - Cliff Dixon vs. Barton	Feb. 21, 2009
11 - Cliff Dixon vs. Dodge City	Jan. 7, 2009
11 - Cliff Dixon vs. Garden City	Jan. 10, 2009
11 - Cliff Dixon vs. Barton	Jan. 21, 2009
10 - Ryan Douvier vs. St. Mary JV	Oct. 31, 2008
10 - Dominique Rutledge vs. Coffeyville	Dec. 5, 2008
10 - Darius Johnson-Odom vs. Kansas City	Dec. 7, 2008
10 - Dominique Rutledge vs. Kansas City	Dec. 7, 2008
10 - Cliff Dixon vs. Seward County	Jan. 3, 2009
10 - Dominique Rutledge vs. Barton	Jan. 21, 2009

2008-09 Blue Dragon Men's Basketball Game-By-Game Review

Date	Opponent	Score	Record (JC)	Points	Rebounds	Assists	Steals
Oct. 31	U. of St.Mary JV*	W, 86-54	1-0	20 - Johnson-Odom	10 - Douvier	6 - Johnson	2 - 4 tied
Nov. 1	Labette*	W, 79-57	2-0	19 - Dixon	12 - Shirley	8 - Johnson-Odom	3 - Johnson-Odom, Dixon
Nov. 6	Sterling College JV^	W, 102-45	3-0	23 - McBride	9 - Shirley	9 - Johnson	5 - Williams
Nov. 7	Fort Scott^	W, 81-62	4-0	23 - Johnson-Odom	9 - Johnson	5 - Johnson/J.-Odom	2 - Dixon, Johnson
Nov. 8	Wetherford College^	W, 97-68	5-0	19 - Shirley	12 - Dixon	7 - Johnson	3 - Dixon
Nov. 11	Allen County	W, 79-53	6-0	25 - Johnson-Odom	7 - Johnson-Odom	9 - Johnson-Odom	3 - Rutledge
Nov. 14	Clarendon College#	W, 88-78	7-0	27 - Dixon	7 - Dixon; J.-Odom	6 - Johnson-Odom	2 - J.-Odom, Dixon
Nov. 15	McCook#	L, 68-70	7-1	24 - Johnson-Odom	7 - Shirley, Dixon	5 - Bond	2 - Williams
Nov. 22	Highland	W, 79-72	8-1	22 - Johnson-Odom	15 - Johnson-Odom	6 - Johnson/J.-Odom	1 - Johnson/J.-Odom
Nov. 25	Allen County	L, 70-72	8-2	30 - Johnson-Odom	6 - Rutledge	3 - McBride	4 - Johnson-Odom
Dec. 5	Coffeyville+	L 86-90	8-3	46 - Johnson-Odom	13 - Williams	5 - Williams	2 - Williams
Dec. 7	Kansas City+	W, 78-48	9-3	32 - Johnson-Odom	10 - J.-Odom/Rutledge	4 - Johnson	4 - Williams
Dec. 13	Central Nebraska	W, 96-73	10-3	22 - Rutledge	9 - Johnson-Odom	9 - Johnson-Odom	3 - J-Odom/Rutledge
Dec. 31	Friends University JV	W, 94-55	11-3	22 - Johnson-Odom	9 - Rutledge	7 - Johnson	4 - J.-Odom/Banks
Jan. 3	Seward County	W, 76-69	12-3 (1-0)	21 - Johnson-Odom	13 - Rutledge	4 - Johnson-Odom	3 - Williams
Jan. 7	Dodge City	W, 86-74	13-3 (2-0)	24 - Johnson-Odom	11 - Dixon	7 - Johnson-Odom	1 - 4 tied
Jan. 10	Garden City	W, 82-80	14-3 (3-0)	28 - Johnson-Odom	11 - Dixon	3 - 4 tied	2 - 3 tied
Jan. 14	Butler	L, 60-86	14-4 (3-1)	24 - McBride	7 - Rutledge	8 - Johnson-Odom	2 - 3 tied
Jan. 21	Barton	W, 74-70	15-4 (4-1)	17 - Dixon	11 - Dixon	8 - Johnson-Odom	2 - J.-Odom/Williams
Jan. 25	Colby	L, 50-73	15-5 (4-2)	21 - McBride	9 - Dixon	3 - Shirley, Banks	3 - J.-Odom/Williams
Jan. 28	Pratt	W, 83-66	16-5 (5-2)	37 - Johnson-Odom	14 - Rutledge	3 - 3 tied	1 - 6 tied
Jan. 31	Cloud County	L, 70-71 (OT)	16-6 (5-3)	24 - Dixon	13 - Rutledge	3 - J-Odom/Dixon	2 - Williams
Feb. 2	Seward County	L, 58-82	16-7 (5-4)	21 - Dixon	9 - Rutledge	4 - Johnson-Odom	2 - Williams, Rutledge
Feb. 4	Dodge City	L, 68-71	16-8 (5-5)	24 - Johnson-Odom	9 - Dixon	4 - Johnson-Odom	6 - Dixon
Feb. 7	Garden City	L, 77-79	16-9 (5-6)	29 - Dixon	9 - Dixon	4 - Johnson/Bond	3 - Bond
Feb. 11	Butler	W, 55-48	17-9 (6-6)	23 - Dixon	12 - Dixon	3 - Johnson-Odom	2 - J.-Odom/Williams
Feb. 18	Barton	L, 69-81	17-10 (6-7)	22 - Johnson-Odom	12 - Dixon	4 - Johnson/J.-Odom	3 - Williams
Feb. 21	Colby	w, 89-70	18-10 (7-7)	21 - Johnson-Odom	9 - Williams	5 - 3 tied	2 - J.-Odom/Williams
Feb. 25	Pratt						
Feb. 28	Cloud County						

* - Quarterback Classic; ^ - Grand Prairie Classic; # - Airport Steakhouse Classic; + - Jayhawk Shootout at Coffeyville

Record by Starting Lineup

Johnson-Odom, McBride, Johnson, Shirley, Douvier.....	2-0
Johnson-Odom, McBride, Dixon, Johnson, Shirley	4-0
Johnson-Odom, McBride, Dixon, Shirley, Bond	1-1
Johnson-Odom, McBride, Shirley, Bond, Douvier	1-0
Johnson-Odom, McBride, Johnson, Shirley, Rutledge.....	0-1
Johnson-Odom, Johnson, Williams, Shirley, Rutledge.....	1-1
Johnson-Odom, Johnson, Shirley, Banks, Rutledge	4-3
Johnson-Odom, Johnson, Williams, Shirley, Rutledge.....	1-0
Johnson-Odom, McBride, Shirley, Banks, Rutledge	2-1
Johnson-Odom, Dixon, Williams, Banks, Rutledge	1-3
Johnson-Odom, Dixon, Williams, Shirley, Banks	1-0

Blue Dragon Win/Loss Margin

Margin	Win	Loss		
11	0	0	11	0
12	1	1	12	1
13	0	0	13	0
14	0	0	14	0
15	0	0	15	0
16	0	0	16	0
17	1	0	17	0
18	0	0	18	0
19	2	0	19	0
20	0	0	20	0
20+	8	3	20+	8

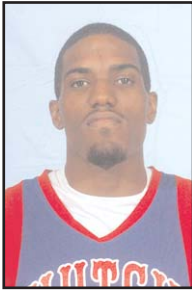
2008-09 Blue Dragon Individual/Team Superlatives

	HCC INDIVIDUAL HIGH	OPPONENT INDIVIDUAL HIGH
Points Scored	46 - Darius Johnson-Odom vs. Coffeyville	38 - Shamar Acuay, Colby
Field Goals	14 - Darius Johnson-Odom vs. Coffeyville	15 - Shamar Acuay, Colby
Field Goal Attempts	26 - Darius Johnson-Odom vs. Coffeyville	25 - Shamar Acuay, Colby
Field goal Pct. (min. 5 att.)	80.0 - Javari Williams vs. Sterling JV (4-5) 80.0 - Devon McBride vs. Weatherford (4-5) 80.0 - Javari Williams vs. Highland (4-5) 80.0 - Austin Bond vs. Friends JV (4-5)	77.8 - Danny Agbelese, Clarendon (7-9)
3-Pointers	8 - Darius Johnson-Odom vs. Coffeyville	4 - Tyler Nordman, Highland 4 - Fred Williams, Garden City 4 - Chip Steven, Barton 10 - Tyler Nordman, Highland 100.0 - Aaron Jackson, Allen County (3-3)
3-Point Attempts	17 - Darius Johnson-Odom vs. Coffeyville	
3-Point Pct. (min. 3 att.)	100.0 - Tom Shirley vs. Allen County (4-4) 100.0 - Cody Beaton vs. Friends JV (4-4)	
Free Throws	14 - Darius Johnson-Odom vs. Pratt	12 - Marcus Brister, Weatherford
Free-Throw Attempts	19 - Darius Johnson-Odom vs. Pratt	17 - Marcus Brister, Weatherford
Free-Throw Pct. (min. 5 att.)	100.0 - Darius Johnson-Odom vs. McCook (13-13)	87.5 - Antoine Branch, Coffeyville (7-8)
Rebounds	15 - Darius Johnson-Odom vs. Highland	20 - Shamar Acuay, Colby
Assists	9 - Lazarius Johnson vs. Sterling College JV 9 - Darius Johnson-Odom - 2 times (last vs. Central Nebraska)	10 - Bob Wesley, Garden City
Blocked Shots	5 - Austin Bond vs. Barton	4 - Danny Agbelese, Clarendon 4 - Niyika Williams, Barton 9 - Shamar Acuay, Colby
Steals	6 - Cliff Dixon vs. Dodge City	
	HCC TEAM HIGHS	HCC TEAM LOWS
Points scored	102 - Sterling College JV	50 - Colby
One half	56 - Dodge City	16 - Dodge City
FG made	39 - Sterling College JV	18 - McCook, Dodge City
FG attempts	74 - Central Nebraska	41 - Cloud County
FG percentage	64.2 - Dodge City (34-53)	30.2 - Colby (19-63)
3-pt made	11 - Coffeyville, Friends JV, Colby	0 - Clarendon
3-pt attempts	30 - Coffeyville	8 - Clarendon
3-pt percentage	61.1 - Friends JV (11-18)	0.0 - Clarendon (0-8)
FT made	31 - McCook	8 - Colby
FT attempts	48 - Pratt	14 - Colby
FT percentage	83.8 - McCook (31-37)	39.1 - Seward County (9-23)
Rebounds	54 - Weatherford, Clarendon	26 - Colby
Personal Fouls	25 - Weatherford	12 - Colby
Assists	27 - Sterling College JV	8 - Seward County
Turnovers	28 - Clarendon	11 - Highland
Blocked shots	13 - Barton	1 - Fort Scott
Steals	19 - Friends JV	2 - Highland
	OPPONENT TEAM HIGHS	OPPONENT TEAM LOWS
Points scored	90 - Coffeyville	45 - Sterling College JV
One half	47 - Clarendon, Highland	27 - Butler
FG made	34 - Butler	15 - Butler
FG attempts	91 - Clarendon	48 - Dodge City
FG percentage	52.1 - Dodge City (25-48)	23.4 - Butler (15-64)
3-pt made	11 - Coffeyville	2 - Clarendon
3-pt attempts	31 - Highland	9 - Dodge City
3-pt percentage	46.7 - Allen County (7-15)	10.7 - Pratt (3-28)
FT made	26 - Barton	5 - Sterling College JV, Colby
FT attempts	40 - Barton	6 - Colby
FT percentage	94.4 - Seward County (17-18)	35.3 - Kansas City (6-17)
Rebounds	53 - Butler	27 - Highland
Personal Fouls	31 - Cloud County	14 - St. Mary JV, Colby
Assists	17 - McCook, Allen County, Coffeyville, Butler	8 - Barton, Cloud County, Butler
Turnovers	31 - Sterling College JV	7 - Highland
Blocked shots	6 - Labette, Garden City, Barton	0 - Sterling College JV, Highland, Butler
Steals	18 - Seward County	3 - Highland

2008-09 Team Game-by-Game Comparisons

	Pts	FG-FGA	Pct.	3FG/3FGA	Pct.	FT-FTA	Pct.	O-D	Reb.	PF	A	TO	BS	S
at Hutchinson	86	31-70	44.3	6-24	25.0	18-22	81.8	16-33	49	17	19	16	4	12
U. of St. Mary JV	54	20-61	32.8	7-24	29.2	7-11	63.6	9-25	34	14	12	25	1	11
at Hutchinson	79	26-64	45.3	4-17	23.5	17-37	45.9	20-31	51	18	21	16	4	10
Labette	57	19-66	28.8	3-18	16.7	16-23	69.6	20-26	46	28	10	20	6	8
at Hutchinson	102	39-65	60.0	10-22	45.5	14-29	48.3	17-26	43	18	27	12	7	18
Sterling College JV	45	18-51	35.3	4-13	30.8	5-10	50.0	11-18	29	23	10	31	0	7
at Hutchinson	81	32-66	48.5	7-16	43.8	10-17	58.8	16-30	46	15	19	14	1	6
Fort Scott	62	23-65	35.4	4-19	21.1	12-17	70.6	13-22	35	15	12	13	4	6
at Hutchinson	97	37-67	55.2	5-14	35.7	18-31	58.1	19-35	54	25	26	20	5	6
Weatherford	68	24-67	35.8	4-26	15.4	16-28	57.1	14-32	32	24	10	12	3	8
Hutchinson	79	28-55	50.9	7-15	46.7	16-28	57.1	10-31	41	17	16	21	6	11
at Allen County	53	20-56	35.7	6-24	25.0	7-14	50.0	10-24	34	26	13	22	5	12
at Hutchinson	88	30-62	48.4	0-8	0.0	28-38	73.7	16-38	54	18	17	28	6	7
Clarendon	78	32-91	35.2	2-18	11.1	12-20	60.0	25-21	46	28	14	18	5	15
at Hutchinson	68	18-58	31.0	1-14	7.1	31-37	83.8	15-26	41	14	9	10	6	3
McCook	70	28-63	44.4	5-21	23.8	9-17	52.9	12-29	41	16	17	12	3	5
at Hutchinson	79	25-55	47.3	9-19	47.4	18-28	64.3	15-30	45	19	19	11	5	2
Highland	72	23-57	40.4	10-31	32.3	16-23	69.6	7-20	27	20	13	7	0	3
at Hutchinson	70	22-55	40.0	8-24	33.3	18-3	78.3	11-21	32	17	12	19	6	7
Allen County	72	28-57	49.1	7-15	46.7	9-18	50.0	13-25	38	19	17	19	4	8
Hutchinson	86	29-68	42.6	11-30	36.7	17-22	77.3	22-23	45	22	16	16	4	5
vs. Coffeyville	90	30-64	46.9	11-26	42.6	19-28	67.9	17-21	38	23	17	13	2	7
Hutchinson	78	30-59	50.8	6-14	42.9	12-19	63.2	15-34	49	16	16	15	6	9
vs. Kansas City	48	18-58	21.0	6-30	20.0	6-17	35.3	13-19	32	15	12	15	4	8
at Hutchinson	96	37-74	50.0	10-22	45.5	12-19	63.2	16-31	47	20	23	14	8	10
Central Nebraska	73	26-77	33.8	6-23	26.1	15-20	75.0	23-24	47	19	14	20	1	4
Hutchinson	94	34-66	51.5	11-18	61.1	15-27	55.6	19-23	42	15	24	20	5	19
Friends University JV	55	21-58	36.2	3-16	18.8	10-11	90.9	13-21	34	24	14	30	1	10
at Hutchinson	76	26-60	43.3	4-15	26.7	20-26	76.9	18-27	45	17	8	25	3	8
Seward County	69	26-72	36.1	4-21	19.0	13-17	76.5	22-20	42	18	12	19	1	18
Hutchinson	86	34-53	64.2	6-10	60.0	12-17	70.6	7-32	39	17	17	18	3	4
at Dodge City	74	30-71	42.3	6-14	42.9	8-14	57.1	13-15	28	16	9	8	1	10
at Hutchinson	82	25-56	44.6	5-12	41.7	27-42	64.3	21-29	50	21	11	21	5	8
Garden City	80	26-66	39.4	10-27	37.0	18-29	62.1	17-20	37	29	14	13	6	15
Hutchinson	60	21-48	43.8	2-13	15.4	16-27	59.3	10-18	28	18	17	23	7	9
at Butler	86	34-72	47.2	6-18	33.3	12-16	75.0	22-24	46	24	17	16	0	15
at Hutchinson	74	25-60	41.7	3-14	21.4	21-30	70.0	9-37	46	18	15	21	13	7
Barton	70	23-73	31.5	5-19	26.3	19-23	82.6	15-30	45	25	8	19	6	12
Hutchinson	50	19-63	30.2	4-25	16.0	8-16	50.0	17-26	43	17	12	28	5	9
at Colby	73	27-67	40.3	5-13	38.5	14-19	73.7	16-32	48	15	9	19	4	17
at Hutchinson	83	25-47	53.2	5-12	41.7	28-48	58.3	11-41	52	18	12	24	9	6
Pratt	66	25-88	28.4	3-28	10.7	13-19	68.4	25-22	47	29	11	13	3	15
Hutchinson	70	21-41	51.2	5-13	38.5	23-39	59.0	5-31	36	20	13	21	5	4
at Cloud County	71 (OT)	27-67	40.3	6-23	26.1	11-21	52.4	16-25	41	31	8	16	3	8
Hutchinson	58	25-52	42.3	5-16	31.3	9-23	39.1	15-22	37	18	13	25	3	6
at Seward County	82	28-50	50.0	9-17	52.9	17-18	94.4	6-21	27	19	18	14	3	16
at Hutchinson	68	18-50	36.0	5-18	27.8	27-41	65.9	16-19	35	24	9	22	3	17
Dodge City	71	25-48	52.1	3-9	33.3	18-26	69.2	7-24	31	29	16	24	3	8
Hutchinson	77	27-57	47.4	5-16	31.3	18-27	66.7	12-21	33	17	18	15	3	7
at Garden City	79	32-67	47.8	6-18	33.3	9-18	50.0	19-22	41	20	19	16	3	7
at Hutchinson	55	19-52	36.5	4-12	33.3	13-24	54.2	9-28	37	20	11	18	6	9
Butler	48	15-64	23.4	4-25	16.0	14-20	70.0	24-29	53	23	8	23	3	9
Hutchinson	69	25-60	41.7	7-17	41.2	12-24	50.0	9-29	38	27	12	12	4	5
at Barton	81	25-57	43.9	5-14	35.7	26-40	65.0	12-32	44	19	14	12	5	10
at Hutchinson	89	35-71	49.3	11-25	44.0	8-14	57.1	19-29	48	12	25	13	5	7
Colby	70	28-72	38.9	9-27	33.3	5-6	83.3	15-19	34	14	12	10	2	6
Hutchinson														
at Pratt														
at Hutchinson														
Cloud County														

2008-09 Blue Dragon Player Season Recaps



Darius Johnson-Odom

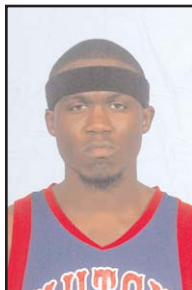
Height - 6-2
Year - Freshman
Position - Guard
Hometown - Raleigh, N.C.

Johnson-Odom's Season Highs

Points	46	- Coffeyville
Field Goals	14	- Coffeyville
Field Goal Attempts	26	- Coffeyville
3-Pointers	8	- Coffeyville
3-Point Attempts	17	- Coffeyville
Free Throws	14	- Pratt
Free-Throw Attempts	19	- Pratt
Rebounds	15	- Highland
Assists	9	- 2 times (last vs. Central Nebraska)
Blocked Shots	3	- 2 times (last vs. Pratt)
Steals	4	- 2 times (last vs. Friends JV)
Minutes Played	40:00	- McCook

Opponent	FG-A	3Pt-A	FT-A	Pts	OR	DR	TR	PF	A	TO	B	S	Min
St. Mary JV*	9-14	2-5	0-0	20	0	2	2	1	3	4	0	2	28:59
Labette*	5-13	1-4	3-5	14	0	9	9	2	8	7	1	3	33:21
Sterling JV*	5-8	3-6	2-3	15	1	2	3	3	5	1	0	3	20:10
Fort Scott*	7-15	3-6	6-9	23	3	3	6	2	5	1	0	0	32:57
Weatherford*	5-10	0-2	6-8	16	1	6	7	2	6	4	0	0	29:21
Allen County*	8-14	0-3	9-10	25	0	7	7	0	9	4	2	2	31:45
Clarendon*	7-15	0-3	3-8	17	2	5	7	4	6	9	0	2	38:50
McCook*	5-16	1-5	13-13	24	0	3	3	3	2	2	0	0	40:00
Highland*	8-14	3-4	3-6	22	2	13	15	3	6	3	1	1	34:47
Allen County*	10-22	5-12	5-5	30	0	5	5	1	2	2	0	4	36:38
Coffeyville*	14-26	8-17	10-10	46	2	7	9	1	4	5	0	1	38:50
Kansas City*	12-17	3-7	5-6	32	3	7	10	2	3	4	0	1	31:52
Central Nebraska*	8-16	2-5	2-2	20	3	6	9	3	9	4	3	3	29:33
Friends University JV*	9-14	0-1	4-8	22	4	0	4	3	4	3	0	4	25:01
Seward County*	7-15	2-5	5-6	21	1	3	4	0	4	5	0	1	39:30
Dodge City*	9-16	2-4	4-4	24	1	7	8	2	7	6	1	1	33:09
Garden City*	7-10	2-3	12-12	28	3	4	7	4	2	5	1	2	34:49
Butler*	1-9	0-5	4-6	6	0	2	2	3	8	5	1	2	35:22
Barton*	3-12	0-4	9-10	15	0	2	2	3	8	7	2	2	37:59
Colby*	1-8	0-5	1-3	3	1	2	3	1	2	4	1	3	30:29
Pratt*	10-15	3-5	14-19	37	0	3	3	2	3	6	3	0	35:58
Cloud County*	3-5	2-4	2-4	10	0	0	0	4	3	3	0	0	19:01
Seward County*	4-11	3-6	3-5	14	2	4	6	3	4	6	0	0	26:35
Dodge City*	5-10	3-7	11-11	24	2	3	5	4	4	5	0	2	32:15
Garden City*	6-13	3-7	8-9	23	0	2	2	5	3	5	1	0	33:27
Butler*	6-16	2-5	5-9	19	1	5	6	1	3	4	0	2	35:51
Barton*	6-15	3-7	7-12	22	0	0	0	3	4	4	0	2	33:21
Colby*	7-15	3-8	4-5	21	1	2	3	0	4	0	0	2	25:10
Pratt													
Cloud County													

* - Indicates Started Game



Devon McBride

Height - 6-3
Year - Sophomore
Position - Guard
Hometown - Richmond, VA

McBride's Season Highs

Points	24	- Butler
Field Goals	9	- Butler
Field Goal Attempts	17	- Colby
3-Pointers	4	- Sterling JV
3-Point Attempts	7	- 3 times (last vs. Colby)
Free Throws	10	- Pratt
Free-Throw Attempts	12	- Labette
Rebounds	7	- Colby
Assists	4	- Clarendon
Blocked Shots	1	- 5 times (last vs. Colby)
Steals	1	- 4 times (last Pratt)
Minutes Played	34:04	- Clarendon

Opponent	FG-A	3Pt-A	FT-A	Pts	OR	DR	TR	PF	A	TO	B	S	Min
St. Mary JV*	4-7	1-4	3-4	12	1	2	3	4	0	1	0	0	14:52
Labette*	3-10	2-4	6-12	14	2	3	5	2	0	0	0	0	20:24
Sterling JV*	8-13	4-7	3-3	23	1	0	1	2	1	1	0	1	15:30
Fort Scott*	7-16	1-4	1-2	16	1	2	3	0	0	1	0	0	27:44
Weatherford*	4-5	2-2	3-5	13	2	0	2	1	0	3	0	0	22:16
Allen County*	5-11	3-6	1-1	14	1	3	4	1	2	0	1	0	22:28
Clarendon*	5-14	0-2	5-6	15	4	2	6	1	4	2	0	0	34:04
McCook*	3-11	0-3	7-7	13	3	2	5	0	0	0	1	0	28:00
Highland*	5-11	2-6	6-7	18	1	1	2	0	0	1	0	0	25:48
Allen County*	8-15	3-7	4-4	23	3	1	4	2	3	3	1	0	33:22
Coffeyville													
Kansas City													
Central Nebraska	5-10	2-5	2-2	14	2	1	3	1	0	1	1	0	17:16
Friends University JV	4-11	3-6	0-0	11	2	1	3	2	1	4	0	0	15:45
Seward County	5-12	1-2	3-3	14	4	0	4	3	0	3	0	0	21:36
Dodge City	1-3	1-1	2-2	5	0	1	1	2	3	1	0	0	15:00
Garden City	2-8	0-3	5-6	9	3	3	6	1	1	1	0	0	22:44
Butler	9-13	0-1	6-10	24	1	3	4	0	1	0	0	1	30:05
Barton*	3-10	1-3	0-1	7	0	3	3	1	3	1	0	1	18:37
Colby*	8-17	2-7	3-4	21	3	4	7	0	0	3	1	0	27:01
Pratt*	4-6	1-1	6-10	15	0	4	4	1	1	3	0	1	25:14
Cloud County													
Seward County													
Dodge City													
Garden City													
Butler													
Barton													
Colby													
Pratt													
Cloud County													

* - Indicates Started Game

2008-09 Blue Dragon Player Season Recaps



Cliff Dixon

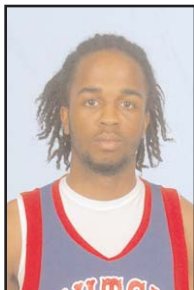
Height - 6-9
Year - Sophomore
Position - Forward
Hometown - Suitland, MD

Dixon's Season Highs

Points	29	-	Garden City
Field Goals	11	-	Garden City
Field Goal Attempts	21	-	Barton
3-Pointers	1	-	3 times (last vs. Pratt)
3-Point Attempts	3	-	2 times (last vs. Pratt)
Free Throws	9	-	Clarendon
Free-Throw Attempts	13	-	2 times (last vs. Butler)
Rebounds	12	-	2 times (last vs. Butler)
Assists	5	-	Friends JV
Blocked Shots	4	-	Garden City
Steals	3	-	Friends JV
Minutes Played	30:41	-	Garden City

Opponent	FG-A	3PI-A	FT-A	Pts	OR	DR	TR	PF	A	TO	B	S	Min
St. Mary JV	4-9	0-0	5-6	13	4	3	7	2	3	3	1	1	14:10
Labette	8-13	0-1	3-5	19	1	3	4	1	0	4	1	3	26:20
Sterling JV*	8-11	0-0	2-6	18	3	4	7	1	3	0	1	1	20:09
Fort Scott*	5-10	0-1	1-2	11	2	5	7	2	3	2	0	2	23:46
Weatherford*	7-15	1-2	2-4	17	6	6	12	2	4	6	2	3	29:03
Allen County*	5-9	0-0	1-1	11	1	5	6	2	2	5	0	1	26:11
Clarendon*	9-17	0-1	9-12	27	2	5	7	0	4	3	0	2	27:55
McCook*	4-15	0-1	3-4	11	3	4	7	3	0	2	1	0	23:32
Highland	DNP												
Allen County	DNP												
Coffeyville	DNP												
Kansas City	DNP												
Central Nebraska	DNP												
Friends University JV	1-3	0-0	2-6	4	3	5	8	1	5	4	3	3	20:48
Seward County	7-15	0-3	0-0	14	4	6	10	3	0	6	2	2	26:10
Dodge City	8-11	0-1	2-4	18	1	10	11	1	2	2	2	0	23:22
Garden City	3-11	0-0	5-6	11	3	8	11	4	2	5	4	2	30:41
Butler	3-6	1-1	2-3	9	1	1	2	1	0	5	0	0	16:46
Barton	5-9	0-0	7-12	17	2	9	11	3	0	3	3	0	26:43
Colby	5-9	0-1	0-2	10	5	4	9	2	0	6	0	0	16:20
Pratt	3-8	1-3	2-6	9	0	7	7	1	1	4	2	1	19:02
Cloud County	7-10	0-1	10-13	24	1	5	6	4	3	7	1	0	29:59
Seward County	9-17	0-0	3-5	21	2	4	6	1	1	5	1	1	29:29
Dodge City*	6-15	0-0	7-11	19	2	7	9	3	0	5	1	0	36:36
Garden City*	11-20	0-0	7-10	29	2	7	9	1	0	3	1	2	27:42
Butler*	8-17	0-0	7-13	23	2	10	12	2	2	5	2	1	37:26
Barton*	6-21	0-2	2-3	14	3	9	12	2	0	3	3	0	32:54
Colby*	2-6	0-0	0-0	4	3	2	5	4	2	6	1	0	17:41
Pratt													
Cloud County													

* - Indicates Started Game



Lazarius 'Ty' Johnson

Height - 6-3
Year - Freshman
Position - Guard
Hometown - Miami, Fla

Johnson's Season Highs

Points	13	-	Kansas City
Field Goals	5	-	2 times (last vs. Kansas City)
Field Goal Attempts	10	-	Garden City
3-Pointers	2	-	4 times (last vs. Garden City)
3-Point Attempts	4	-	2 times (last vs. Garden City)
Free Throws	5	-	Allen County
Free-Throw Attempts	5	-	Allen County
Rebounds	9	-	Fort Scott
Assists	9	-	Sterling College JV
Blocked Shots	1	-	Highland
Steals	4	-	Sterling College JV
Minutes Played	36:35	-	Cloud County

Opponent	FG-A	3PI-A	FT-A	Pts	OR	DR	TR	PF	A	TO	B	S	Min
St. Mary JV*	1-6	0-3	4-4	6	0	4	4	1	6	0	0	1	28:08
Labette*	5-8	0-1	1-3	11	0	2	2	2	3	3	0	1	28:30
Sterling JV*	1-4	0-2	1-2	3	0	2	2	1	9	1	0	4	22:24
Fort Scott*	3-5	2-2	0-0	8	1	8	9	3	5	5	0	2	35:21
Weatherford*	3-5	1-2	0-1	7	1	4	5	2	3	0	0	0	28:20
Allen County*	2-3	0-1	0-0	4	0	4	4	4	2	3	0	1	20:37
Clarendon	DNP												
McCook	DNP												
Highland	1-5	1-3	0-2	3	0	5	5	3	6	1	1	1	27:59
Allen County*	2-5	0-1	5-5	9	0	4	4	3	3	5	0	1	35:12
Coffeyville*	1-6	0-3	0-0	2	0	2	2	4	1	3	0	1	27:50
Kansas City*	5-7	2-3	1-3	13	0	1	1	1	4	3	0	0	28:26
Central Nebraska*	3-6	2-4	1-4	9	1	3	4	3	4	3	0	0	25:56
Friends University JV*	2-3	0-0	0-0	4	1	2	3	3	7	3	0	1	29:00
Seward County*	0-2	0-2	4-4	4	0	0	0	2	1	1	0	0	17:22
Dodge City*	2-4	1-2	0-0	5	0	3	3	0	2	2	0	0	21:18
Garden City*	4-10	2-4	0-0	10	0	3	3	2	1	5	0	1	21:43
Butler*	2-3	0-1	0-0	4	0	1	1	3	1	3	0	2	19:29
Barton	0-0	0-0	0-0	0	0	0	0	1	0	1	0	0	7:06
Colby	0-5	0-2	0-0	0	1	6	7	3	0	2	0	0	17:32
Pratt	3-5	0-0	0-0	6	1	5	6	2	3	5	0	1	31:39
Cloud County*	1-2	1-1	4-6	7	0	3	3	2	2	1	0	0	36:35
Seward County*	1-8	1-4	0-0	3	0	2	2	3	1	1	0	0	18:38
Dodge City*	1-8	1-5	1-2	4	0	0	0	2	0	4	0	1	30:24
Garden City	2-4	0-2	0-1	4	1	2	3	1	4	2	0	1	23:42
Butler	1-3	1-3	0-0	3	2	0	2	4	1	2	0	1	22:02
Barton	0-3	0-1	0-1	0	0	1	1	2	4	0	0	0	14:01
Colby	1-6	1-5	1-2	4	0	2	2	1	5	1	0	1	23:54
Pratt													
Cloud County													

* - Indicates Started Game

2008-09 Blue Dragon Player Season Recaps



Javari Williams

Height - 6-3
 Year - Redshirt Freshman
 Position - Forward
 Hometown - Brampton,
 Ontario, Canada

Williams' Season Highs

Points	15	- Colby
Field Goals	7	- Colby
Field Goal Attempts	13	- 2 times (last vs. Coffeyville)
3-Pointers	1	- Colby
3-Point Attempts	1	- 5 times (last vs. Colby)
Free Throws	5	- Kansas City
Free-Throw Attempts	8	- 2 times (last vs. Dodge City)
Rebounds	13	- Coffeyville
Assists	7	- Weatherford
Blocked Shots	2	- 2 times (last vs. Butler)
Steals	5	- Sterling College JV
Minutes Played	37:56	- Coffeyville

Opponent	FG-A	3Pt-A	FT-A	Pts	OR	DR	TR	PF	A	TO	B	S	Min
St. Mary JV	5-13	0-1	0-2	10	4	3	7	1	0	4	0	1	20:20
Labette	3-7	0-0	0-4	6	4	2	6	1	1	0	0	0	17:21
Sterling JV	4-5	0-0	2-5	10	2	2	4	1	1	1	0	5	18:16
Fort Scott	DNP												
Weatherford	4-4	0-0	4-8	12	1	4	5	4	7	2	0	1	25:20
Allen County	3-3	0-0	0-5	6	0	2	2	2	0	1	2	1	18:18
Clarendon	1-3	0-1	1-2	3	2	3	5	3	1	6	1	0	15:08
McCook	1-3	0-0	0-0	2	0	1	1	0	2	1	1	2	21:27
Highland	4-5	0-0	2-2	10	2	3	5	3	0	3	1	0	22:46
Allen County	1-5	0-1	2-4	4	1	3	4	2	1	1	0	1	23:13
Coffeyville*	4-13	0-2	1-2	9	7	6	13	3	5	1	1	2	37:56
Kansas City*	2-5	0-0	5-7	9	2	5	7	0	2	0	0	4	26:31
Central Nebraska	1-4	0-0	3-5	5	1	0	1	2	1	0	0	0	12:47
Friends University JV	1-2	0-0	0-0	2	0	0	0	0	0	0	0	0	2:26
Seward County	1-2	0-0	1-2	3	1	4	5	0	0	1	0	3	12:52
Dodge City*	0-0	0-0	1-2	1	1	2	3	2	1	1	0	1	21:58
Garden City	2-2	0-0	0-6	4	3	1	4	2	1	0	0	0	13:40
Butler	0-1	0-1	1-4	1	1	0	1	0	1	1	0	1	13:48
Barton	1-2	0-0	1-2	3	0	2	2	0	0	0	1	0	18:09
Colby	0-3	0-0	3-4	3	2	1	3	3	1	4	0	3	23:49
Pratt	0-0	0-0	1-2	1	0	1	1	1	0	0	0	0	7:55
Cloud County	2-3	0-0	2-2	6	1	1	2	1	1	2	1	2	36:35
Seward County	1-2	0-1	1-5	3	1	4	5	4	0	1	0	2	29:00
Dodge City	4-6	0-0	4-8	12	5	2	7	4	2	2	0	4	31:34
Garden City*	1-2	0-0	2-2	4	4	0	4	1	3	2	0	0	23:14
Butler*	1-1	0-0	0-0	2	0	2	2	4	0	2	2	2	26:38
Barton*	3-4	0-0	2-6	8	3	4	7	3	1	2	0	3	29:04
Colby*	7-10	1-1	0-3	15	3	6	9	1	5	3	1	2	27:43
Pratt													
Cloud County													

* - Indicates Started Game



Tom Shirley

Height - 6-8
 Year - Freshman
 Position - Forward
 Hometown - Grantville, KS

Shirley's Season Highs

Points	19	- Weatherford
Field Goals	8	- Weatherford
Field Goal Attempts	12	- Barton
3-Pointers	4	- Allen County
3-Point Attempts	5	- 4 times (last vs. Colby)
Free Throws	5	- McCook
Free-Throw Attempts	8	- McCook
Rebounds	12	- Labette
Assists	4	- Friends University JV
Blocked Shots	3	- 2 times (Sterling College JV)
Steals	2	- 5 times (last vs. Barton)
Minutes Played	34:05	- Barton

Opponent	FG-A	3Pt-A	FT-A	Pts	OR	DR	TR	PF	A	TO	B	S	Min
St. Mary JV*	2-3	0-0	4-4	8	1	5	6	2	2	1	3	2	21:24
Labette*	3-5	0-0	1-2	7	6	6	12	3	2	1	0	2	24:55
Sterling JV*	2-3	0-0	1-4	5	3	6	9	2	1	2	3	0	22:43
Fort Scott*	0-3	0-0	0-0	0	1	4	5	3	1	0	0	1	20:44
Weatherford*	8-10	1-1	2-3	19	2	3	5	1	2	2	2	0	26:04
Allen County*	5-7	4-4	0-1	14	0	1	1	2	0	2	1	0	23:18
Clarendon*	3-5	0-0	2-2	8	2	7	9	4	1	2	1	0	33:35
McCook*	3-6	0-2	5-8	11	4	3	7	4	0	2	1	0	21:19
Highland*	1-3	0-1	2-3	4	2	0	2	3	1	0	0	0	19:07
Allen County*	1-4	0-2	1-2	3	0	1	1	4	2	0	1	0	24:12
Coffeyville*	3-9	1-4	4-4	11	5	2	7	4	1	2	0	0	26:38
Kansas City*	2-8	1-2	0-0	5	1	3	4	1	2	1	1	1	27:56
Central Nebraska*	6-8	2-3	2-2	16	2	5	7	0	2	1	1	1	25:07
Friends University JV	3-7	2-5	3-4	11	0	5	5	0	4	0	1	2	26:44
Seward County*	1-3	1-2	2-2	5	0	7	7	4	1	2	1	0	28:09
Dodge City*	3-3	1-1	2-2	9	1	3	4	3	0	0	0	1	28:03
Garden City*	2-5	1-2	2-2	7	3	1	4	4	2	3	0	2	21:13
Butler*	1-3	1-2	0-0	3	2	2	4	2	2	3	1	0	13:45
Barton*	6-12	1-4	0-0	13	0	8	8	2	0	1	0	2	34:05
Colby*	1-7	1-3	0-0	3	1	2	3	1	3	1	1	0	15:17
Pratt	2-4	0-1	1-2	5	2	3	5	5	1	1	0	1	24:42
Cloud County*	4-10	2-5	0-1	10	0	2	2	3	2	0	1	1	26:01
Seward County*	1-5	0-3	0-0	2	0	1	1	2	1	4	0	0	15:48
Dodge City	DNP												
Garden City	3-9	1-5	0-0	7	1	5	6	4	1	0	0	1	24:09
Butler	2-5	1-2	0-0	5	2	1	3	1	0	0	0	0	16:17
Barton*	1-3	1-3	1-2	4	1	2	3	5	0	2	0	0	25:02
Colby*	5-11	3-5	0-0	13	5	0	5	1	1	0	1	0	22:44
Pratt													
Cloud County													

* - Indicates Started Game

2008-09 Blue Dragon Player Season Recaps



Cody Beaton

Height - 6-3
Year - Freshman
Position - Guard
Hometown - Hutchinson, KS

Beaton's Season Highs

Points	14 - Friends JV
Field Goals	4 - Friends JV
Field Goal Attempts	4 - Friends JV
3-Pointers	4 - Friends JV
3-Point Attempts	4 - 2 times (last vs. Friends JV)
Free Throws	2 - Friends JV
Free-Throw Attempts	2 - 3 times (last vs. Friends JV)
Rebounds	2 - Labette
Assists	3 - Labette
Blocked Shots	0
Steals	0
Minutes Played	11:50 - Kansas City

Opponent	FG-A	3Pt-A	FT-A	Pts	OR	DR	TR	PF	A	TO	B	S	Min
St. Mary JV	1-1	1-4	0-0	3	0	0	0	0	0	0	0	0	8:58
Labette	0-1	0-1	1-2	1	1	1	2	0	3	0	0	0	7:54
Sterling JV	1-2	1-2	0-0	3	0	0	0	0	1	2	0	0	10:18
Fort Scott	2-2	0-0	0-0	4	0	0	0	0	0	0	0	0	2:16
Weatherford	0-1	0-0	0-0	0	1	0	1	1	0	0	0	0	2:03
Allen County	0-0	0-0	0-2	0	0	0	0	0	0	0	0	0	2:25
Clarendon	DNP												
McCook	DNP												
Highland	DNP												
Allen County	DNP												
Coffeyville	DNP												
Kansas City	0-1	0-0	0-0	0	1	0	1	1	2	2	0	0	11:50
Central Nebraska	2-3	2-3	0-0	6	0	1	1	0	0	0	0	0	5:52
Friends University JV	4-4	4-4	2-2	14	0	1	1	0	1	0	0	0	8:15
Seward County	DNP												
Dodge City	DNP												
Garden City	DNP												
Butler	0-0	0-0	0-0	0	0	0	0	0	0	0	0	0	1:23
Barton	DNP												
Colby	1-3	1-3	0-0	3	0	1	1	1	0	0	0	0	7:26
Pratt	0-0	0-0	0-0	0	0	0	0	0	0	0	0	0	0:32
Cloud County	0-0	0-0	0-0	0	0	0	0	1	0	0	0	0	3:19
Seward County	0-0	0-0	0-0	0	0	1	1	0	0	0	0	0	1:56
Dodge City	0-1	0-1	0-1	0	0	1	1	0	1	0	0	0	2:32
Garden City	0-0	0-0	0-0	0	0	0	0	0	0	0	0	0	0:02
Butler	DNP												
Barton	DNP												
Colby	1-3	1-2	0-0	3	0	1	1	0	0	0	0	0	5:06
Pratt													
Cloud County													

* - Indicates Started Game



Chris Banks

Height - 6-2
Year - Sophomore
Position - Guard
Hometown - Fort Scott, KS

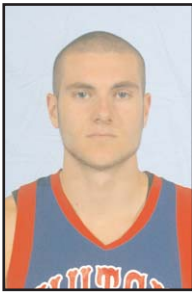
Banks' Season Highs

Points	4 - 4 times (last vs. Dodge City)
Field Goals	2 - 3 times (last vs. Colby)
Field Goal Attempts	4 - Friends JV
3-Pointers	0
3-Point Attempts	2 - Kansas City
Free Throws	2 - Dodge City
Free-Throw Attempts	3 - Dodge City
Rebounds	5 - 2 times (last vs. Colby)
Assists	3 - Colby
Blocked Shots	0
Steals	4 - Friends JV
Minutes Played	27:20 - Colby

Opponent	FG-A	3Pt-A	FT-A	Pts	OR	DR	TR	PF	A	TO	B	S	Min
St. Mary JV	DNP												
Labette	DNP												
Sterling JV	DNP												
Fort Scott	DNP												
Weatherford	DNP												
Allen County	DNP												
Clarendon	DNP												
McCook	DNP												
Highland	0-0	0-0	0-0	0	0	0	0	0	0	0	0	0	4:26
Allen County	0-0	0-0	0-0	0	0	1	1	0	1	2	0	0	9:51
Coffeyville	0-0	0-0	0-0	0	0	0	0	1	0	0	0	0	4:42
Kansas City	1-3	0-0	1-2	3	2	3	5	2	0	0	0	0	17:13
Central Nebraska*	2-2	0-0	0-0	4	0	2	2	0	0	1	0	2	25:45
Friends University JV*	2-4	0-0	0-1	4	0	1	1	0	2	0	0	4	20:04
Seward County*	0-2	0-1	0-0	0	1	0	1	2	2	1	0	1	22:24
Dodge City	0-0	0-0	0-0	0	1	0	1	1	1	1	0	0	17:29
Garden City*	0-0	0-0	1-2	1	0	4	4	3	2	0	0	0	25:58
Butler*	0-0	0-0	2-2	2	0	1	1	2	2	1	0	0	18:05
Barton*	0-0	0-0	0-0	0	0	1	1	2	3	2	0	0	22:13
Colby	2-2	0-0	0-1	4	0	3	3	5	3	3	0	2	24:09
Pratt*	0-0	0-0	0-0	0	1	2	3	1	0	1	0	1	15:05
Cloud County*	1-2	0-0	0-1	2	0	2	2	1	1	1	0	0	19:52
Seward County*	0-0	0-0	0-0	0	0	1	1	0	1	2	0	1	19:13
Dodge City*	1-2	0-1	2-4	4	0	0	0	2	0	1	0	1	18:55
Garden City*	0-0	0-0	0-0	0	1	0	1	1	3	0	0	0	21:33
Butler*	0-1	0-1	0-0	0	0	2	2	4	2	1	0	0	21:40
Barton*	0-1	0-1	0-0	0	0	4	4	2	3	1	0	0	23:42
Colby*	1-2	0-0	0-0	2	1	4	5	1	5	1	0	1	27:20
Pratt													
Cloud County													

* - Indicates Started Game

2008-09 Blue Dragon Player Season Recaps



Austin Bond

Height - 6-5
Year - Sophomore
Position - Guard
Hometown - Kansas City, KS

Bond's Season Highs

Points	15	- Barton
Field Goals	6	- Barton
Field Goal Attempts	6	- 3 times (last vs. Colby)
3-Pointers	3	- Barton
3-Point Attempts	4	- 6 times (last vs. Colby)
Free Throws	6	- Clarendon
Free-Throw Attempts	6	- Clarendon
Rebounds	6	- St. Mary JV (1 times last vs. McCook)
Assists	4	- 2 times (last vs. Garden City)
Blocked Shots	5	- Barton
Steals	3	- Garden City
Minutes Played	30:33	- McCook

Opponent	FG-A	3Pt-A	FT-A	Pts	OR	DR	TR	PF	A	TO	B	S	Min
St. Mary JV	2-6	1-4	0-0	5	2	4	6	2	4	1	0	2	21:34
Labette	2-4	1-3	2-3	7	1	0	1	1	1	1	1	1	13:25
Sterling JV	3-4	2-3	1-2	9	0	2	2	2	1	0	3	2	19:51
Fort Scott	3-5	1-3	0-0	7	0	1	1	1	1	3	0	1	17:51
Weatherford	1-4	0-3	1-2	3	0	1	1	3	2	2	0	1	13:55
Allen County	0-3	0-1	0-0	0	1	3	4	1	0	1	0	1	24:17
Clarendon*	2-3	0-0	6-6	10	0	4	4	2	0	2	1	1	29:16
McCook*	1-3	0-2	0-0	2	2	4	6	1	5	1	2	1	30:33
Highland*	2-5	2-4	0-0	6	0	0	0	2	3	0	0	0	28:32
Allen County	DNP												
Coffeyville	2-4	2-4	0-0	6	0	0	0	2	2	0	1	0	20:43
Kansas City	0-1	0-1	0-0	0	0	0	0	0	0	2	0	0	18:49
Central Nebraska	0-4	0-2	0-0	0	0	1	1	3	3	0	0	1	17:59
Friends University JV	4-5	2-2	2-2	12	0	2	2	0	0	2	0	2	21:55
Seward County	0-0	0-0	0-0	0	0	0	0	0	0	1	0	0	7:36
Dodge City	1-1	1-1	0-0	3	0	1	1	2	0	1	0	0	9:36
Garden City	0-0	0-0	0-0	0	0	0	0	0	0	0	0	0	4:00
Butler	0-1	0-1	0-0	0	0	0	0	0	0	0	1	0	8:46
Barton	1-5	1-3	4-4	7	0	3	3	2	1	1	5	1	19:20
Colby	0-4	0-4	0-0	0	0	0	0	1	1	1	2	1	13:16
Pratt	0-2	0-2	0-0	0	0	1	1	3	0	0	0	0	6:50
Cloud County	1-3	0-2	0-0	2	0	3	3	2	1	1	0	0	25:13
Seward County	1-2	1-2	0-0	3	0	0	0	0	2	2	0	0	13:02
Dodge City	1-5	1-4	0-0	3	1	1	2	3	1	2	1	1	20:09
Garden City	1-4	1-2	0-0	3	0	0	0	1	4	1	0	3	21:37
Butler	0-1	0-1	0-0	0	0	0	0	1	2	1	0	0	16:53
Barton	6-6	3-3	0-0	15	0	0	0	3	0	0	1	0	23:47
Colby	4-6	2-4	0-0	10	0	4	4	0	2	0	2	0	14:23
Pratt													
Cloud County													

* - Indicates Started Game



Dominique Rutledge

Height - 6-8
Year - Freshman
Position - Forward
Hometown - Newark, N.J.

Rutledge's Season Highs

Points	22	- Central Nebraska
Field Goals	10	- Central Nebraska
Field Goal Attempts	18	- Central Nebraska
3-Pointers	0	
3-Point Attempts	0	
Free Throws	5	- 2 times (last vs. Cloud County)
Free-Throw Attempts	12	- Cloud County
Rebounds	13	- 2 times (last vs. Cloud County)
Assists	3	- Pratt
Blocked Shots	4	- 3 times (last vs. Pratt)
Steals	3	- 3 times (last vs. Butler)
Minutes Played	32:31	- Pratt

Opponent	FG-A	3Pt-A	FT-A	Pts	OR	DR	TR	PF	A	TO	B	S	Min
St. Mary JV	DNP												
Labette	DNP												
Sterling JV	5-9	0-0	0-2	10	4	2	6	3	0	2	0	2	16:36
Fort Scott	4-7	0-0	0-2	8	4	3	7	0	2	1	1	0	21:48
Weatherford	4-9	0-0	0-0	8	2	6	8	3	1	0	1	0	9:47
Allen County	0-4	0-0	2-4	2	1	5	6	2	1	3	0	3	19:27
Clarendon	3-4	0-0	2-2	8	3	4	7	2	0	2	3	1	15:11
McCook	1-3	0-2	0-0	2	1	3	4	2	0	2	0	0	14:17
Highland	3-9	0-0	3-6	9	4	2	6	3	2	1	1	0	21:33
Allen County*	0-3	0-0	1-3	1	3	3	6	2	0	5	4	0	23:21
Coffeyville*	4-9	0-0	2-6	10	6	4	10	3	2	5	2	0	30:53
Kansas City*	7-14	0-0	0-1	14	4	6	10	4	1	3	4	1	25:39
Central Nebraska*	10-18	0-0	2-4	22	3	6	9	4	1	3	2	3	24:21
Friends University JV*	4-11	0-0	2-4	10	6	3	9	3	0	3	1	1	19:08
Seward County*	5-9	0-0	5-9	15	7	6	13	3	0	4	0	1	24:21
Dodge City*	9-13	0-0	1-3	19	0	5	5	2	0	4	0	1	24:36
Garden City*	5-10	0-0	2-8	12	3	3	6	1	0	1	0	1	25:12
Butler*	3-8	0-1	1-2	7	3	4	7	3	0	3	2	1	30:10
Barton*	6-10	0-0	0-1	12	4	6	10	4	0	5	2	1	15:48
Colby*	1-4	0-0	1-2	3	2	1	3	0	1	2	0	0	18:08
Pratt*	3-7	0-0	4-9	10	6	8	14	2	3	4	4	1	32:31
Cloud County*	2-5	0-0	5-12	9	2	11	13	1	0	5	2	0	26:59
Seward County*	2-4	0-0	2-7	6	6	3	9	3	0	2	2	2	27:07
Dodge City*	0-3	0-0	2-4	2	3	1	4	2	1	3	1	2	20:21
Garden City*	3-5	0-0	1-5	7	1	3	4	2	0	1	1	0	21:49
Butler*	0-7	0-0	1-2	1	0	6	6	3	1	3	2	3	20:41
Barton	0-3	0-0	0-0	0	0	3	3	4	0	0	0	0	10:09
Colby	5-9	0-0	0-0	10	3	4	7	2	0	0	0	0	17:10
Pratt													
Cloud County													

* - Indicates Started Game

2008-09 Blue Dragon Player Season Recaps



Ryan Douvier

Height - 6-5
Year - Sophomore
Position - Forward
Hometown - Newton, KS

Douvier's Season Highs

Points	7 - Colby
Field Goals	3 - 2 times (last vs. Barton)
Field Goal Attempts	6 - St. Mary JV
3-Pointers	0
3-Point Attempts	2 - Labette
Free Throws	3 - 2 times (last vs. Colby)
Free-Throw Attempts	4 - 2 times (last vs. Colby)
Rebounds	10 - St. Mary JV
Assists	4 - Sterling College JV
Blocked Shots	2 - Butler
Steals	2 - 4 times (last vs. Butler)
Minutes Played	24:06 - St. Mary JV

Opponent	FG-A	3PI-A	FT-A	Pts	OR	DR	TR	PF	A	TO	B	S	Min
St. Mary JV*	2-6	0-1	2-2	6	3	7	10	4	0	1	0	2	24:06
Labette*	0-2	0-2	0-0	0	1	2	3	4	2	0	1	0	11:24
Sterling JV	2-5	0-1	2-2	6	3	5	8	2	4	1	0	0	20:32
Fort Scott	1-3	0-0	0-0	2	1	2	3	4	2	1	0	0	13:42
Weatherford	1-2	0-0	0-0	2	0	1	1	4	0	0	0	0	6:21
Allen County	0-1	0-0	3-4	3	3	1	4	3	0	1	0	2	8:29
Clarendon	0-0	0-0	0-0	0	0	1	1	2	0	1	0	1	3:50
McCook	0-1	0-1	2-2	2	1	2	3	1	0	0	0	0	9:52
Highland*	1-1	0-0	2-2	4	2	3	5	1	1	1	1	0	10:28
Allen County	0-1	0-1	0-0	0	0	2	2	3	0	0	0	1	14:11
Coffeyville	1-1	0-0	0-0	2	1	1	2	4	1	0	0	1	12:28
Kansas City	1-3	0-0	0-0	2	1	4	5	5	0	2	0	2	11:44
Central Nebraska	0-3	0-0	0-0	0	0	5	5	2	3	1	1	0	15:24
Friends University JV	0-2	0-0	0-0	0	1	1	2	3	0	1	0	2	10:54
Seward County	DNP												
Dodge City	1-2	0-0	0-0	2	1	0	1	2	1	0	0	0	5:29
Garden City	DNP												
Butler	2-4	0-0	0-0	4	1	2	3	4	2	2	2	2	12:21
Barton	DNP												
Colby	0-1	0-0	0-0	0	0	1	1	0	1	0	0	0	6:41
Pratt	0-0	0-0	0-0	0	0	0	0	0	0	0	0	0	0:32
Cloud County	0-1	0-0	0-0	0	0	0	0	1	0	1	0	1	3:35
Seward County	3-3	0-0	0-1	6	1	2	3	2	3	1	0	0	9:12
Dodge City	0-0	0-0	0-0	0	1	0	1	4	0	0	0	0	7:19
Garden City	0-0	0-0	0-0	0	0	1	1	0	0	0	0	0	2:45
Butler	1-1	0-0	0-0	2	0	0	0	0	0	0	0	0	2:33
Barton	3-4	0-0	0-0	6	1	1	2	3	0	0	0	0	8:00
Colby	2-3	0-0	3-4	7	2	3	5	2	1	1	0	1	18:49
Pratt													
Cloud County													

* - Indicates Started Game