

# Hutchinson Community College

# BLUE DRAGONS

## 2008-09 Men's Basketball Game Notes

Blue Dragon Media Relations - (620) 664-3593

Media Contact - Steve Carpenter, Sports Information Director

Release Date - February 17, 2009

Athletic web site - [www.hutchcc.edu/dragons](http://www.hutchcc.edu/dragons)

### GAME 27 - JAYHAWK WEST GAME 13



### Hutchinson Blue Dragons (17-9, 6-6) vs. No. 13 Barton Cougars (23-4, 10-3)

Date: Wednesday, February 18, 2009

Tipoff: 8 p.m.

Site: Barton CC Gym (Capacity: 2,000), Great Bend, Kan.

Radio: KHUT-FM (102.9), 7:50 p.m. airtime

Internet: [www.hutchcc.edu/dragons](http://www.hutchcc.edu/dragons) (live radio, stats)



### BLUE DRAGONS GO AFTER SWANSON'S 200TH VICTORY, WILL TRY TO SPOIL BARTON'S CLINCHING PARTY

The Hutchinson Community College men's basketball team can achieve several things on Wednesday night when it travels to No. 13 Barton Community College.

First, the Blue Dragons can secure head coach Ryan Swanson's 200th career coaching victory.

Second, HCC can delay the coronation of the Cougars as 2009 Jayhawk West champions.

And most importantly, a win would keep the Blue Dragons right in the thick of a top-four finish in the Jayhawk West and a home game first the first round of the Region VI Tournament.

The game is scheduled for an 8 p.m. tipoff at the Barton CC Gym. The game can be heard live on Blue Dragon flagship station KHUT-FM (102.9) at 7:50 p.m. with Glen Grunwald (play-by-play) and Rusty Hilst (analysis) calling the action. The game can also be heard live on the internet on the Blue Dragon Sports Network.

#### SERIES HISTORY VS. BARTON

Record - 73-17

In Hutchinson - HCC leads 36-4

At Sports Arena - HCC leads 35-4

In Great Bend - HCC leads 27-12

Region VI - HCC leads 9-2

Most consecutive wins - 15

Most consecutive losses - 2 (5 times)

Recorded overtimes - HCC leads 2-1

Streak - Hutchinson: 1

Despite losing 2 of its last 4 games, Barton (13-4, 10-3 Jayhawk West) can clinch the Jayhawk West outright with a victory over Hutchinson. The Cougars will be smarting a little after an 86-70 loss at Butler on Saturday night.

The Blue Dragons (17-9, 6-6) have had a week to prepare for Barton. HCC had a week to prepare before the first meeting and handed the Cougars their first Jayhawk West loss with a 74-70 victory.

HCC is currently tied for fifth with Pratt, one-half game behind Seward Co.

#### 2008-09 BLUE DRAGON SCHEDULE

| Date                                   | Opponent                        | Time/Result   |
|--|---------------------------------|---------------|
| <b>QUARTERBACK CLASSIC</b>             |                                 |               |
| Oct. 31                                | U. of St. Mary Junior Varsity   | W, 86-54      |
| Nov. 1                                 | Labette                         | W, 79-57      |
| <b>GRAND PRAIRIE HOTEL CLASSIC</b>     |                                 |               |
| Nov. 6-8                               | Sterling College JV             | W, 102-45     |
| Nov. 7                                 | Fort Scott                      | W, 81-62      |
| Nov. 8                                 | Weatherford College             | W, 97-68      |
| Nov. 11                                | at Allen County                 | W, 79-53      |
| <b>AIRPORT STEAKHOUSE CLASSIC</b>      |                                 |               |
| Nov. 14-15                             | Clarendon College               | W, 88-78      |
| Nov. 15                                | McCook                          | L, 68-70      |
| Nov. 22                                | Highland                        | W, 79-72      |
| Nov. 25                                | Allen County                    | L, 70-72      |
| <b>JAYHAWK SHOOTOUT at Coffeyville</b> |                                 |               |
| Dec. 5/7                               | vs. Coffeyville                 | L, 86-90      |
| Dec. 5                                 | vs. Kansas City                 | W, 78-48      |
| Dec. 7                                 | Central Nebraska                | W, 96-73      |
| Dec. 13                                | Friends University JV           | W, 94-55      |
| Dec. 31                                | Seward County                   | W, 76-69      |
| Jan. 3                                 | at Dodge City                   | W, 86-74      |
| Jan. 7                                 | Garden City                     | W, 82-80      |
| Jan. 10                                | at Butler                       | L, 60-86      |
| Jan. 14                                | Barton                          | W, 74-70      |
| Jan. 21                                | at Colby                        | L, 50-73      |
| Jan. 25                                | Pratt                           | W, 83-66      |
| Jan. 28                                | at Cloud County                 | L, 70-71 (OT) |
| Jan. 31                                | at Seward County                | L, 58-82      |
| Feb. 2                                 | Dodge City                      | L, 68-71      |
| Feb. 4                                 | at Garden City                  | L, 77-79      |
| Feb. 7                                 | Butler                          | W, 55-48      |
| Feb. 11                                | at Barton                       | 8 p.m.        |
| Feb. 18                                | Colby                           | 7:30 p.m.     |
| Feb. 21                                | at Pratt                        | 8 p.m.        |
| Feb. 25                                | Cloud County                    | 7:30 p.m.     |
| Feb. 28                                | Region VI First Round at TBA    |               |
| Mar. 4                                 | Region VI Tournament at Wichita |               |
| Mar. 7-9                               |                                 |               |

#### 2008-09 BLUE DRAGON NUMERICAL ROSTER

| No. | Name                | Pos | Ht.  | Yr.   | Hometown (Previous school)         | Worth Noting  |
|-----|---------------------|-----|------|-------|------------------------------------|---|
| 3   | Darius Johnson-Odom | G   | 6-2  | Fr.   | Raleigh, NC (Wakefield HS)         | Had SR 46 pts. vs. Coffeyville and 14 20-plus points games in 08-09.    |
| 15  | Devon McBride       | G   | 6-3  | So.   | Richmond, VA (Binghamton U.)       | Has been indefinitely suspended from team.                              |
| 21  | Cliff Dixon         | F   | 6-10 | So.   | Suitland, MD (Mottow State CC)     | Posted 6th double-double of season (23 pts./12 rbs.) vs. Butler.        |
| 22  | Lazarus Johnson     | G   | 6-3  | Fr.   | Miami, FL (Miami Senior HS)        | Had season-high nine assists against Sterling College JV.               |
| 23  | Javari Williams     | F   | 6-5  | R-Fr. | Brampton, Ontario (St. Joseph HS)  | Had nine points, career-high 13 rebounds in first career start on 12/5. |
| 24  | Tom Shirley         | F   | 6-7  | Fr.   | Grantville, KS (Jefferson West HS) | Hit 8 of 10 shots in 19-point outing against Weatherford.               |
| 25  | Cody Beaton         | G   | 6-0  | Fr.   | Hutchinson, KS (Buhler HS)         | Went 4-4 from 3-point range, scored season-high 14 vs. Friends JV.      |
| 32  | Chris Banks         | G   | 6-2  | So.   | Fort Scott, KS (Fort Scott HS)     | One of team's top defenders; held CNCC's top scorer to 3 of 19 FGs.     |
| 33  | Austin Bond         | G   | 6-0  | So.   | Kansas City, KS (Piper HS)         | Had career-high 6 blocked shots vs. Barton on 1/21.                     |
| 34  | Dominique Rutledge  | F   | 6-8  | Fr.   | Newark, NJ (Edison Academy)        | Four of five double-doubles have come vs. Jayhawk West foes.            |
| 42  | Ryan Douvier        | F   | 6-6  | So.   | Newton, KS (Newton HS)             | First start, Douvier scored 6 pts. with 10 rbs., 2 steals vs. USM. JV   |
| RS  | Everson Lacerda     | C   | 6-11 | So.   | Belo Horizonte, Brazil (Colby CC)  | Transfer from Colby; will redshirt in the 2008-09 season.               |

## DRAGONS CLIMB TO NO. 2 IN NJCAA IN ALL-TIME WINS

With their 76-69 victory over Seward County on Jan. 3, the Hutchinson Community College men's basketball team moved past Moberly Area Community College for second place on the NJCAA all-time wins list.

The Blue Dragons are 1,515-531, a winning percentage of .742, in their 78th season of men's basketball.

The Blue Dragons trail only Southeastern Iowa in all-time wins. Southeastern Iowa became the first NJCAA program to win 1,500 games in the 2007-08 season.

With a 79-53 victory over Labette on Nov. 1, 2008, the Blue Dragons became only the third NJCAA program to post 1,500 victories.

A 63-46 victory over river Butler Community College on Jan. 28, 2004, the Blue Dragons posted victory No. 1,400.

### NJCAA ALL-TIME WINS

|                      |            |
|----------------------|------------|
| 1. Southeastern Iowa | .....1,541 |
| 2. Hutchinson        | .....1,515 |
| 3. Moberly           | .....1,512 |
| 4. Vincennes         | .....1,454 |

## JOHNSON-ODOM OFF TO A SPECTACULAR START AT HCC

It didn't take a school-record scoring effort to convince Blue Dragon fans that freshman guard Darius Johnson-Odom was special. That 46-point effort against Coffeyville on Dec. 5 at the Jayhawk Shootout just solidified the fact that he was.

Johnson-Odom is starting to be referenced along side names of some Blue Dragon greats. His numbers in his freshman season are already a basis for the comparisons.

Johnson-Odom is currently 2nd in Region VI and is 16th in the NJCAA in scoring at 21.2 points per game. His streak of 10-straight 20-plus-point games was snapped on Jan. 14 at Butler.

Johnson-Odom has 16 games of scoring 20 or more points this season.

During a three-game stretch in the first semester of 30, 46 and 32 points, where he shot 48.3 percent overall and 44.4 percent (16 of 36) from 3-point range.

Johnson-Odom is ranked No. 6 on the HCC freshman scoring list with 550 points. His scoring average is No. 3 on the HCC freshman scoring average list, trailing Blue Dragon greats Roy "Pooh" Hairston (1993) and Rudy Jackson (1973).

Johnson-Odom is still 127 points away from joining the Blue Dragon single-season Top 10 scoring list. His season scoring average is currently eighth on the single-season percentage list.

### BLUE DRAGON TOP 10 FRESHMAN SCORING LIST

|                               |          |
|-------------------------------|----------|
| 1. Roy Hairston (1993)        | .....807 |
| 2. Rudy Jackson (1973)        | .....679 |
| 3. Tyrone Jones (1986)        | .....605 |
| 4. Corey Floyd (1989)         | .....592 |
| 5. Richard Morsden (1971)     | .....556 |
| 6. Darius Johnson-Odom (2009) | .....550 |
| 7. Brandon Gary (2003)        | .....534 |
| 9. Cortez Barnes (1991)       | .....489 |
| 9. Teko Wynder (1973)         | .....488 |
| 10. Stan Blackmon (1971)      | .....485 |

### BLUE DRAGON TOP 10 FRESHMAN SCORING AVG. LIST

|                               |           |
|-------------------------------|-----------|
| 1. Roy Hairston (1993)        | .....23.7 |
| 2. Rudy Jackson (1973)        | .....23.4 |
| 3. Darius Johnson-Odom (2009) | .....21.2 |
| 4. Corey Floyd (1989)         | .....19.1 |
| 5. Teko Wynder (1973)         | .....16.4 |
| 5. Richard Morsden (1971)     | .....16.4 |

## JOHNSON-ODOM ECLIPSES 36-YEAR OLD SCORING RECORD

HCC freshman guard Darius Johnson-Odom broke one of the longest-standing individual records in Blue Dragon basketball history on Dec. 5 against Coffeyville at the Jayhawk Shootout.

Johnson-Odom broke the single-game school record for scoring with 46 points in a 90-86 loss to Coffeyville.

The old record belonged to Richard Morsden, who scored 45 points against Dodge City in 1972.

For the game, Johnson-Odom hit 14 of 26 shots, 8 of 17 from 3-point range, and was 10 of 10 from the free-throw line. Johnson-Odom also had nine rebounds, four assists and one steal in 38:50.

Johnson-Odom carried the team, especially in the last 12 minutes, scoring 32 points during that span.

Johnson-Odom now has two games in the single-game Top 10. He scored 37 points in an 83-66 victory over Pratt on Jan. 28. Johnson-Odom was 10 of 15 overall shooting, going 3 of 5 from 3-point range and was 14 of 19 from the free-throw line.

### BLUE DRAGON TOP 10 SINGLE SCORING GAMES

|                          |           |
|--------------------------|-----------|
| 46 - Darius Johnson-Odom | .....2008 |
| 45 - Richard Morsden     | .....1972 |
| 43 - Eric Stevens        | .....1991 |
| 40 - Roy "Pooh" Hairston | .....1994 |
| 38 - Roy "Pooh" Hairston | .....1993 |
| 38 - Nate Brumfield      | .....2006 |
| 37 - Darius Johnson-Odom | .....2008 |
| 37 - Tyrone Jones        | .....1987 |
| 37 - William Davis       | .....1988 |
| 37 - Ben Davis           | .....1994 |
| 36 - Todd Christian      | .....1986 |

## Head Coach Ryan Swanson

Ryan Swanson is in his third season as Blue Dragon head coach. The Hutchinson native and former HCC player is the Blue Dragons' 13th head coach in 78 seasons of basketball.

HCC is the fourth head coaching stop - all at the junior college level - in Swanson's career. Swanson is 199-83 in eight-plus seasons as a juco head coach. He is now 63-26 at HCC. He is in 10th place on the HCC career coaching list.

He is the seventh HCC head coach to win 20 games in each of his first two seasons.

Swanson was the 12th straight HCC head coach to win 20 games in his first season. He led the Blue Dragons to a 23-8 record in 2006-07. Last season, Swanson guided the Blue Dragons to a 23-9 record and a second-place finish in the Jayhawk West, plus a quarterfinal berth in the Region VI Tournament.

Swanson was 74-24 in three seasons at St. Catharine's College, 16-14 in one season at Marshalltown, Iowa and 46-19 in two seasons at Garden City. Swanson led the 2004-05 Garden City team to its first conference championship in more than 50 years.

Swanson also has NCAA Division I coaching experience as an assistant at the University of Wisconsin-Milwaukee for Bruce Pearl (who is now at Tennessee).

Swanson's 2002-03 UWM team went 24-8, won the Horizon League crown and earned a trip to the NCAA Tournament for the first time in the school's 107-year history.

UWM was a No. 12-seed and just missed upsetting No. 5-seed Notre Dame 70-69.

Swanson, who graduated from Hutchinson High School, was a redshirt on the Blue Dragons' 1988 NJCAA national championship team, played in 1989 and was a graduate assistant for head coach David Farrar in 1990.

### SWANSON - BY THE NUMBERS

|                                      |             |
|--------------------------------------|-------------|
| Career record (8th season)           | .....199-83 |
| Record at HCC (3rd season)           | .....63-26  |
| Record at Sports Arena               | .....49-8   |
| Record on opposing floors            | .....9-17   |
| Record on neutral courts             | .....5-1    |
| Record vs. Jayhawk West teams        | .....27-19  |
| Record vs. Jayhawk East teams        | .....13-7   |
| Record vs. Non-conference teams      | .....24-2   |
| Record vs. Nationally ranked teams   | .....11-4   |
| Record in Jayhawk Shootout           | .....5-1    |
| Record in Region VI Tournament       | .....1-2    |
| Record in overtime games             | .....1-2    |
| Record in games of 9 points or less  | .....20-12  |
| Record in games of 10 points or more | .....43-14  |

### SWANSON'S YEAR-BY-YEAR RECORD

| Year    | School                | Record     | Pct. |
|---------|-----------------------|------------|------|
| 1997-98 | St. Catharine College | .....24-7  | .774 |
| 1998-99 | St. Catharine College | .....24-9  | .727 |
| 1999-00 | St. Catharine College | .....26-8  | .765 |
| 2000-01 | Marshalltown CC       | .....16-14 | .533 |
| 2003-04 | Garden City           | .....23-9  | .735 |
| 2004-05 | Garden City           | .....23-10 | .697 |
| 2006-07 | Hutchinson            | .....23-8  | .742 |
| 2007-08 | Hutchinson            | .....23-9  | .719 |
| 2008-09 | Hutchinson            | .....17-9  | .654 |
| Totals  |                       | 199-83     | .706 |



## SERIES HISTORY WITH BARTON

This will be the 91st meeting between Hutchinson and Barton. The Blue Dragons have a 73-17 series advantage.

Hutchinson is 36-4 in games played in Hutchinson. HCC is 27-12 in games played in Great Bend. The Dragons have a 9-2 advantage in Region VI matchups.

The teams split home games in 2008. Hutchinson claimed the first game when Bobby Maze set a school record with 16 assists in a 93-77 victory at the Sports Arena. One month later, the Dragons were dealt one of their worst losses of the season in a 97-75 loss at Great Bend.

Hutchinson defeated Barton 74-70 in the first meeting of this season on Jan. 21 at the Sports Arena.

Barton was forced to forfeit 10 games to the Blue Dragons from 2000-2005 because of a Jayhawk Conference ruling handed down after the program was put on NJCAA probation in 2005.

## SCOUTING BARTON

Despite dropping 2 of their last four games, the Cougars remain in control in the Jayhawk West, leading Butler by 1 1/2 games with just three games to play.

Barton comes into Wednesday's game with Hutchinson with the No. 2 scoring offense and No. 4 scoring defense in Region VI.

The Cougars are averaging 88.0 points per game and have broken 90 or more points 10 times and 100 or more points five times. Barton is shooting 45.85 percent overall and 34.7 percent from 3-point range.

Four players average in double figures led by Nyika Williams, who averages 15.1 points and is second in Region VI shooting 70.2 percent from the field. Williams also averages a team-high 8.9 rebounds per game.

Corey Bingham averages 12.1 points per game, while Josh Martin averages 10.9 points and Chip Steven averages averages 10.7 points per game.

Steven is 71 of 185 (38.4 percent) from 3-point range.

Defensively, the Cougars are 24th in the nation in scoring defense at 67.2 points per game. Opposing teams are shooting 39.9 percent and 29.9 percent from 3-point range.

### HCC'S ALL-TIME SERIES RESULTS WITH BARTON

1/70 .....Hutch .....W, 100-73  
 2/70 .....Great Bend .....W, 86-68  
 1/71 .....Great Bend .....W, 96-92  
 2/71 .....Hutch .....W, 97-69  
 11/71 .....Hutch .....W, 65-58  
 2/72 .....Great Bend .....W, 64-58  
 3/72 .....(R6) .....W, 72-71  
 12/72 .....GBend .L, 94-95, OT  
 2/73 .....Hutch .....W, 82-70  
 3/73 .....(R6) .....W, 69-62  
 1/74 .....Hutch .....W, 81-67  
 2/74 .....Great Bend .....W, 78-72  
 1/75 .....Great Bend .....W, 87-73  
 1/75 .....Hutch .....W, 90-57  
 1/76 .....Hutch .....W, 82-76  
 2/76 .....Great Bend .....W, 74-71  
 2/77 .....Great Bend .....L, 67-86  
 2/77 .....Hutch .....W, 74-73  
 1/78 .....Hutch .....W, 82-70  
 2/78 .....Great Bend .....W, 84-81  
 1/79 .....Great Bend .....W, 68-64  
 2/79 .....Hutch .....W, 90-70  
 1/80 .....Hutch .....W, 107-73  
 2/80 .....Great Bend .....W, 71-70  
 1/81 .....Great Bend .....L, 75-81  
 2/81 .....Hutch .....L, 73-77  
 3/81 .....(R6) .....W, 67-66  
 1/82 .....Great Bend .....L, 64-65  
 2/82 .....Hutch .....W, 71-51  
 3/82 .....(R6) .....L, 60-61  
 1/83 .....Great Bend .....W, 69-57  
 1/83 .....Hutch .....W, 94-88  
 3/83 .....(R6) .....W, 94-65  
 1/84 .....Great Bend .....L, 68-78  
 2/84 .....Hutch .....W, 70-67  
 3/84 .....(R6) .....L, 51-54  
 1/85 .....Great Bend .....L, 54-59  
 2/85 .....Hutch .....W, 73-72, OT  
 1/86 .....Hutch .....W, 76-67

**Record - 72-17**

**In Hutch - 35-4**

**At Sports Arena - 35-4**

**In Great Bend - 27-12**

**Region VI - 9-2**

**Most consecutive wins: 15**

**Most consecutive losses: 2 (5 times)**

**Recorded overtimes: 2-1**

**Most points scored in one game: 106 (HCC won 106-83, Feb. 1990 in Great Bend)**

**Highest combined score: 206 (HCC 105, Barton 101, Jan. 1994 at Great Bend)**

**Largest winning margin: 33 (HCC won 90-57 in Jan. 1975 in Hutch)**

**Largest losing margin: 25 (Barton won 83-58, Feb. 13, 1999 in Great Bend)**

2/86 .....Great Bend .....W, 68-66  
 1/87 .....Great Bend .....W, 87-77  
 2/87 .....Hutch .....W, 68-65  
 3/87 .....(R6) .....W, 88-87  
 1/16/88 .....Hutch .....W, 73-68  
 2/10/88 .....Great Bend .....W, 51-48  
 3/1/88 .....(R6) .....W, 78-65  
 1/89 .....Great Bend .....L, 45-50  
 2/89 .....Hutch .....L, 61-66  
 1/90 .....Hutch .....W, 100-93  
 2/90 .....Great Bend .....W, 106-83  
 1/91 .....Hutch .....W, 100-71  
 2/91 .....Great Bend .....L, 93-100  
 1/92 .....Great Bend .....W, 79-78  
 2/92 .....Hutch .....W, 92-89  
 1/93 .....Great Bend .....W, 77-74

2/93 .....Hutch .....W, 93-70  
 3/93 .....(R6) .....W, 71-54  
 1/94 .....Great Bend W, 105-101  
 2/94 .....Hutch .....W, 77-73  
 1/95 .....Great Bend .....W, 95-86  
 2/95 .....Hutch .....W, 82-75  
 1/96 .....Hutch .....W, 82-73  
 2/96 .....Great Bend .....W, 80-69  
 3/96 .....(R6) .....W, 93-87  
 1/97 .....Great Bend .....W, 46-45  
 2/97 .....Hutch .....L, 52-66  
 1/21/98 .....Great Bend .....L, 67-82  
 2/18/98 .....Hutch .....W, 94-84  
 1/18/99 .....Hutch .....L, 87-91  
 2/13/99 .....Great Bend .....L, 58-83  
 1/17/00 .....Great Bend W, 65-91^^  
 2/12/00 .....Hutch .....W, 74-78^^  
 1/24/01 .....Great BendW, 94-100^^  
 2/21/01 .....Hutch .....W, 58-63^^  
 1/23/02 .....Hutch .....W, 77-73  
 2/20/02 .....Great Bend W, 86-88^^  
 1/22/03 .....Hutch .....W, 72-81^^  
 2/19/03 .....Great Bend W, 83-93^^  
 1/21/04 .....Great Bend W, 63-70^^  
 2/18/04 .....Hutch .....W, 77-65  
 3/8/04 .....(R6) .....W, 60-69^^  
 1/22/05 .....Hutch .....W, 75-69  
 2/26/05 .....Great Bend W, 48-81^^  
 1/21/06 .....GB .W, 89-80 (OT)  
 2/18/06 .....Hutch .....W, 78-62  
 1/24/07 .....Great Bend .....L, 77-94  
 2/24/07 .....Hutch .....W, 84-71  
 1/23/08 .....Hutch .....W, 93-77  
 2/23/08 .....Great Bend .....L, 75-97  
 1/21/09 .....Hutch .....W, 74-70

^^ - Barton County won game, but forfeited game to HCC as per Jayhawk Conference ruling on games played from the 1999-2000 season to the 2004-05 season.

## Tonight's Rosters

### HUTCHINSON BLUE DRAGONS (16-9, 5-6)

| No. | Player              | Pos. | Ht.  | Yr.   | Hometown          |
|-----|---------------------|------|------|-------|-------------------|
| 3   | Darius Johnson-Odom | G    | 6-2  | Fr.   | Raleigh, NC       |
| 15  | Devon McBride       | G    | 6-3  | So.   | Richmond, VA      |
| 21  | Cliff Dixon         | F    | 6-10 | So.   | Suitland, MD      |
| 22  | Lazarus Johnson     | G    | 6-3  | Fr.   | Miami, FL         |
| 23  | Javari Williams     | F    | 6-5  | R-Fr. | Brampton, Ontario |
| 24  | Tom Shirley         | F    | 6-7  | Fr.   | Grantville, KS    |
| 25  | Cody Beaton         | G    | 6-0  | Fr.   | Hutchinson, KS    |
| 32  | Chris Banks         | G    | 6-2  | So.   | Fort Scott, KS    |
| 33  | Austin Bond         | G    | 6-0  | So.   | Kansas City, KS   |
| 34  | Dominique Rutledge  | F    | 6-8  | Fr.   | Newark, NJ        |
| 42  | Ryan Douvier        | F    | 6-6  | So.   | Newton, KS        |

Head Coach - Ryan Swanson

Assistant Coaches - Dave Brown, Ryan Freeberg

### BARTON COUGARS (23-4, 10-3)

| No. | Player          | Pos. | Ht. | Yr. | Hometown              |
|-----|-----------------|------|-----|-----|-----------------------|
| 1   | Taaj Ridley     | F    | 6-6 | Fr. | Bronx, NY             |
| 3   | Josh Martin     | G    | 6-1 | So. | Philadelphia, PA      |
| 5   | Dennan Morrow   | G    | 6-1 | Fr. | Larned, KS            |
| 11  | Aaron Frazier   | G    | 6-0 | Fr. | McPherson, KS         |
| 13  | Corey Bingham   | G    | 6-2 | So. | Lynn, MA              |
| 15  | Chip Steven     | G    | 6-0 | So. | Derby, KS             |
| 21  | Marcus Butler   | G    | 6-2 | So. | Kansas City, KS       |
| 22  | John Schneider  | F    | 6-7 | Fr. | Lawrence, KS          |
| 31  | Bernard Webb    | F    | 6-9 | Fr. | Bridgeport, CT        |
| 32  | Nyika Williams  | F    | 6-7 | So. | Kingston, St. Vincent |
| 33  | Matt Simmons    | F    | 6-7 | So. | Great Bend, KS        |
| 42  | Cornelius Brown | F    | 6-7 | Fr. | Bridgeport, CT        |

Head Coach - Craig Fletchall

Assistant - Jordan Watson

## Statistical Comparison

|                            | HCC  | BCC  |
|----------------------------|------|------|
| Offensive Average          | 77.8 | 88.0 |
| Defensive Average          | 67.9 | 67.2 |
| Offensive Field Goal Pct.  | 46.2 | 48.5 |
| Offensive 3-Point Pct.     | 34.2 | 34.7 |
| Free-throw Pct.            | 63.2 | 66.2 |
| Defensive Field Goal Pct.  | 38.1 | 39.9 |
| Defensive 3-Point Pct.     | 27.1 | 29.9 |
| Opponent's Free-throw Pct. | 65.4 | 64.2 |
| Rebounds For               | 43.1 | 45.4 |
| Rebounds Against           | 38.4 | 34.1 |
| Offensive Rebounds For     | 14.5 | 16.1 |
| Offensive Rebounds Against | 15.5 | 11.7 |
| Total Assists              | 449  | 554  |
| Assists Per Game           | 16.1 | 20.5 |
| Total Turnovers            | 495  | 444  |
| Turnovers Per Game         | 19.0 | 16.4 |
| Opponent's Turnovers       | 455  | 482  |
| Opp. Turnovers Per Game    | 17.5 | 17.9 |
| Total Blocked Shots        | 140  | 160  |
| Blocked Shots Per Game     | 5.4  | 5.9  |
| Total Steals               | 219  | 262  |
| Steals Per Game            | 8.4  | 9.7  |

## FIRST MEETING WITH BARTON

Trailing by one point with 1 minute to play, Darius Johnson-Odom and Cliff Dixon hooked up on a picture-perfect alley-oop that gave the Blue Dragons the lead for good in a wild and intense 74-70 Jayhawk West victory over No. 11 Barton on Jan. 21 at the Sports Arena.

Barton led 65-64 and had possession of the ball when Johnson-Odom stole the ball away and then hit Dixon with a perfect lob pass for a dunk that gave HCC the lead for good with 55 seconds left in the game. Then in the final minute, the Dragons got a key blocked shot by Dominique Rutledge and another Johnson-Odom steal, plus four huge free throws in the final 33 seconds to secure their 13th straight Jayhawk West win and the sixth-straight victory over Barton at the Sports Arena.

Hutchinson (15-4, 4-1 Jayhawk West) held Barton scoreless for the first 5 minutes, 55 seconds of the game and built a first-half lead of 18 (34-16) with 2:19 to play in the half. Barton came all the way back and took a 61-59 lead with 3:41 to play on a Chip Steven 3-pointer.

The lead changed hands six times over the next 3 minutes until Dixon's dunk in the final minute.

Both Dixon and Rutledge had double-doubles to lead Hutchinson. Dixon had 17 points, 11 rebounds and three blocked shots, while Rutledge had 12 points, 10 rebounds, two blocks and a steal.

Johnson-Odom for the second-straight game scuffled from the field, but scored 15 points with eight assists, two blocks and two steals. Freshman Tom Shirley had 13 points, eight rebounds and two steals.

The Blue Dragons finished shooting 25 of 60 overall (41.7 percent), but just 3 of 14 from 3-point range and 21 of 30 from the free-throw line. The Dragons had a slight 46-45 rebounding advantage and committed 21 turnovers. HCC had a season-high 13 blocked shots, getting a career-high five rejections from Austin Bond.

Defensively, the Blue Dragons held Barton (18-2, 5-1) 24 points under its 94-point-per-game scoring average. The Cougars were held to 31.5 percent shooting (23 of 73) and was 5 of 19 from long range and 19 of 23 from the free-throw line. The Cougars had 19 turnovers.

Steven and Taaj Ridley had 17 points each to lead the Cougars.

The Blue Dragons limited Barton to just 23.1 percent shooting in the first half (9 of 39) and held the Cougars to just two field goals in the first 11 minutes.

## LAST GAME RECAP: BUTLER

The Blue Dragons snapped a four-game losing streak with a dominating defensive effort the held Butler to just one field goal in the final 15 minutes of a rugged 55-48 Jayhawk West victory over Butler last Wednesday at the Sports Arena.

Hutchinson (17-9, 6-6 Jayhawk West) held Butler to a season-low 23.4 percent shooting (15 of 64), including just four field goals on 36 attempts in the second half.

The Grizzlies raced out to a 7-0 lead just 3 minutes, 3 seconds into the game. They scored just 41 points over the final 37 minutes. The Grizzlies led 31-27 at halftime, but were outscored 28-17 in the second half, marking the first time this season that Hutchinson has come back to win a game after trailing at halftime.

The Blue Dragons held Butler to the second-lowest point total in the long series between the two teams since 1952. Plus it avenges an embarrassing 86-60 loss at El Dorado on Jan. 14.

The 55 points was the lowest point total in a Blue Dragon victory since the 2004-05 season when HCC defeated Butler 54-52.

Sophomore Cliff Dixon had his sixth double-double of the season with 23 points and 12 rebounds to lead the Blue Dragons. This was Dixon's fourth 20-point game in his last five.

Johnson-Odom added 19 points. Freshman Tom Shirley was next with five points. The Dragons were just 19 of 52 shooting (36.5 percent) and 4 of 12 from 3-point range. HCC was 13 of 24 from the free-throw line. The Dragons won for the first time this season when being outrebounded. Butler had a 53-37 rebounding advantage, including 24 offensive rebounds. But because of the Dragon defensive effort, Butler managed just eight second-half points.

Kenyon Milliner had 12 points to lead the Grizzlies (18-7, 7-4), which lost for the seventh straight time at the Sports Arena. Caleb Walker, who had 29 points in the first meeting, finished with seven points on Wednesday night.

## BLUE DRAGONS IN NJCAA STATISTICAL LEADERS

● Freshman guard Darius Johnson-Odom is ranked No. 17 in scoring at 21.2 points per game.

● The Blue Dragons are ranked No. 26 in the NJCAA in scoring defense at 67.9 points per game.

## Jayhawk Conference Men's Standings

| Jayhawk West      | League     | Overall     |
|-------------------|------------|-------------|
| Barton            | 10-3       | 23-4        |
| Butler            | 8-4        | 19-7        |
| Garden City       | 7-5        | 17-9        |
| Seward County     | 7-6        | 20-7        |
| <b>Hutchinson</b> | <b>6-6</b> | <b>17-9</b> |
| Pratt             | 6-6        | 16-10       |
| Cloud County      | 5-7        | 16-10       |
| Dodge City        | 4-9        | 11-16       |
| Colby             | 3-10       | 5-22        |
| Jayhawk East      | League     | Overall     |
| Coffeyville       | 12-2       | 20-6        |
| Cowley College    | 11-3       | 22-4        |
| Independence      | 11-4       | 16-11       |
| Johnson County    | 10-5       | 16-8        |
| Allen County      | 7-8        | 12-15       |
| Neosho County     | 6-8        | 14-12       |
| Highland          | 5-10       | 13-14       |
| Kansas City, KS   | 4-10       | 8-18        |
| Fort Scott        | 3-11       | 9-17        |
| Labette           | 3-11       | 7-19        |

### Wednesday, February 18

Butler at Colby, 7:30 p.m.  
 Dodge City at Cloud County, 8 p.m.  
 Garden City at Pratt, 8 p.m.  
 Hutchinson at Barton, 8 p.m.  
 Allen County at Neosho County, 8 p.m.  
 Cowley at Coffeyville, 8 p.m.  
 Highland at Johnson County, 7 p.m.  
 Independence at Kansas City, 7:30 p.m.  
 Labette at Fort Scott, 7 p.m.

## 2008-09 NJCAA Division I Basketball Poll

| Team                                     | 2008-09 Record |
|--|----------------|
| 1. Chipola College, Fla.                 | 27-1           |
| 2. Indian Hills CC, Iowa                 | 27-1           |
| 3. Miami-Dade College, Fla.              | 24-2           |
| 4. Southwest Tennessee                   | 20-1           |
| 5. Midland College, Texas                | 25-3           |
| 6. Southwestern Illinois                 | 25-2           |
| 7. North Dakota State College of Science | 27-1           |
| 8. Southeastern Illinois                 | 22-2           |
| 9. Salt Lake CC, Utah                    | 23-3           |
| 9. South Plains College, Texas           | 22-3           |
| 11. Shelton State CC, Ala.               | 25-2           |
| 12. Monroe College, N.Y.                 | 26-2           |
| 13. Barton                               | 23-4           |
| 14. Western Oklahoma State               | 21-4           |
| 15. North Idaho                          | 23-3           |
| 16. Southeastern Iowa                    | 23-5           |
| 17. Collin County, Texas                 | 22-4           |
| 18. Cowley College                       | 22-4           |
| 19. Arizona Western College              | 22-4           |
| 20. Jones County CC, Miss.               | 20-4           |
| 21. Tyler Junior College                 | 19-5           |
| 22. Jacksonville College, Texas          | 20-6           |
| 23. Wallace State CC, Ala.               | 24-4           |
| 24. South Georgia Technical College      | 22-6           |
| 25. McLennan CC, Texas                   | 22-5           |

**Others receiving votes:** Polk CC, Fla. (23-5); Three Rivers CC, Mo. (23-4); Western Nebraska (21-5); Coffeyville (20-6); Lon Morris College, Texas (21-5); Chattanooga State, Tenn. (22-5); Cochise CC, Ariz. (21-5); Highland CC, Ill. (21-5); Northern Oklahoma-Enid (20-7); College of Southern Idaho (19-7); Mottow State, Tenn. (19-6); Gulf Coast CC, Fla. (22-7); Sheridan College, Wyo. (21-6).

## DRAGONS IN NATIONAL POLL

After being ranked as high at No. 15 in November in the NJCAA National Division I men's basketball poll, the Blue Dragons remain out of the latest poll, which was released on Wednesday.

A stretch of three losses in four games sent the Blue Dragons tumbling from the rankings. The Dragons were still receiving votes in the final November poll, but back-to-back losses to Allen County and Coffeyville knocked HCC completely out.

For only the fourth time since 2001, the Blue Dragons were ranked in a regular-season poll at No. 17. One week later, Hutchinson climbed to No. 15. HCC opened the 2008-09 season ranked No. 20. It's the second-straight season HCC starts ranked in the preseason.

The 2007-08 Blue Dragons opened ranked 26th. HCC was unranked in 2005. The 2003 poll had HCC starting 26th and the 2004 poll had HCC 13th. They were unranked in 2002 and 2001.

## DRAGON DEFENSE GETTING IT DONE AGAIN

After a season where they set a new program record for defensive field goal percentage, the 2008-09 Blue Dragons are at it again on the defensive end of the floor.

Through 26 games this season, the 2008-09 Blue Dragons are nearly on pace to break the same record they broke last season. HCC is allowing opposing teams to shoot just 38.4 percent this season. That mark currently leads Region VI.

The Blue Dragons are allowing just 67.2 points per game, which ranks seventh in Region VI and 35th in the NJCAA.

Only 10 of 26 opponents have shot better than 40 percent and two have just shot 50 percent or better.

Opposing teams are shooting just 27.6 percent from 3-point range and are committing 17.3 turnovers per game against the Dragons.

Last year's Blue Dragons allowed opponents just 38.1 percent shooting from the floor. They tied for second in the Jayhawk West in points allowed at 68 points per game.

## AFTER INJURY, RUTLEDGE STARTS TO ROLL

Hampered by a nagging injury in the preseason, freshman forward Dominique Rutledge has begun to show why he was recruited to be a Blue Dragon.

The 6-foot-8 freshman forward was inconsistent through November, but once the calendar flipped to December, Rutledge has been a main cog in the Blue Dragon machine.

With only one game scoring in double figures in his first 10, Rutledge has scored in double figures in 8 of his last 12 games, getting a seven-game streak in double figures snapped on Jan. 14 at Butler.

Rutledge has a season-high 22 against Central Nebraska on Dec. 13. He was 10 of 18 from the field against the Raiders.

Before an off game against Dodge City, in the 11 previous games Rutledge has averaged 12.4 points per game and has shot 50.1 percent from the field. He's also averaged 8.2 rebounds.

He posted four double-doubles this season.

## DRAGONS BANKING ON CHRIS BANKS AS A DEFENSIVE STOPPER

When you look at a Blue Dragon boxscore, don't look at freshman Chris Banks' offensive stats to prove how productive he was. But do check out the people he guarded and that will give you an indication of Banks' game.

Banks, a sophomore from Fort Scott, has been a true defensive stopper since joining the lineup on Nov. 22.

Banks has been in charge of defending some of the top opposing offensive players. Against Central Nebraska, The Raiders Aaron Morrissey was averaging almost 24 points per game. Banks held him to a mere 4 of 16 shooting and 10 points.

Against Dodge City's Rodney Clinkscales, who averaged 19.6 points per game, Banks had the primary defensive assignment. Banks had a major part in holding Clinkscales to just 3 of 15 shooting and a season-low 11 points.

| TRACKING HCC'S<br>NJCAA POLL PROGRESS |          |
|---------------------------------------|----------|
| Preseason Poll                        | No. 20   |
| November 18                           | No. 17   |
| November 25                           | No. 25   |
| December 2                            | RV       |
| Dec. 9/Feb. 18                        | Unranked |

### BLUE DRAGON TOP 10 DEFENSIVE SCORING AVERAGE

|             |       |
|-------------|-------|
| 1. 2007-08  | 38.4% |
| 1. 2008-09  | 38.4% |
| 3. 2003-04  | 38.9% |
| 4. 2002-03  | 39.0% |
| 5. 1993-94  | 39.7% |
| 6. 1988-89  | 40.3% |
| 7. 1989-90  | 40.3% |
| 8. 1971-72  | 40.8% |
| 2006-07     | 40.8% |
| 9. 1995-96  | 40.9% |
| 10. 1972-73 | 41.1% |

## Miscellaneous Statistics

|  |      |
|--|------|
| Record at home                             | 14-3 |
| Record on road                             | 2-6  |
| Record on neutral courts                   | 1-0  |
| Largest margin of victory                  | 57   |
| Largest margin of defeat                   | 26   |
| Largest lead surrendered in loss           | 11   |
| Largest halftime lead surrendered in loss  | 9    |
| Largest deficit overcome to win            | 7    |
| Largest halftime deficit overcome to win   | 4    |
| Record when ahead at halftime              | 15-2 |
| Record when behind at halftime             | 1-7  |
| Record when tied at halftime               | 1-0  |
| Record when shooting 50 pct. or better     | 8-1  |
| Record when shooting less than 50 pct.     | 9-8  |
| Record when opp. shoots 50 pct. or better  | 0-2  |
| Record when opp. shoots less than 50 pct.  | 17-7 |
| Record when outshooting opponent           | 17-1 |
| Record when outshot by opponent            | 0-8  |
| Record when outrebounding opponent         | 16-3 |
| Record when outrebounded by opponent       | 1-5  |
| Record when rebounding is even             | 0-1  |
| Record in overtime                         | 0-1  |
| Record when scoring 80 points or more      | 10-1 |
| Record when scoring 79 points or fewer     | 7-8  |
| Record when allowing 80 points or more     | 2-2  |
| Record when allowing 79 points or fewer    | 16-6 |
| Times HCC scores 100 points or more        | 1    |
| Times HCC scores 90-99 points              | 3    |
| Times HCC scores 80-89 points              | 7    |
| Times HCC scores 70-79 points              | 9    |
| Times HCC scores 60-69 points              | 3    |
| Times HCC scores 50-59 points              | 3    |
| Times HCC scores 40-49 points              | 0    |
| Times HCC scores 30-39 points              | 0    |
| Times HCC scores 29 points or fewer        | 0    |
| Times HCC shoots 60 percent or better      | 2    |
| Times HCC shoots 50 to 59 percent          | 7    |
| Times HCC shoots 40 to 49 percent          | 13   |
| Times HCC shoots 30 to 39 percent          | 4    |
| Times HCC shoots 29 percent or less        | 0    |
| Times opponent scores 100 points or more   | 0    |
| Times opponent scores 90-99 points         | 1    |
| Times opponent scores 80-89 points         | 3    |
| Times opponent scores 70-79 points         | 11   |
| Times opponent scores 60-69 points         | 4    |
| Times opponent scores 50-59 points         | 4    |
| Times opponent scores 40-49 points         | 3    |
| Times opponent scores 30-39 points         | 0    |
| Times opponent scores 29 points or fewer   | 0    |
| Times opponent shoots 60 percent or better | 0    |
| Times opponent shoots 50 to 59 percent     | 2    |
| Times opponent shoots 40 to 49 percent     | 8    |
| Times opponent shoots 30 to 39 percent     | 12   |
| Times opponent shoots 29 percent or less   | 3    |

## JOHNSON-ODOM IS NATIONAL PLAYER OF THE WEEK

Freshman guard Darius Johnson-Odom was named NJCAA National Division I Player of the Week after a spectacular performance in the first weekend of December at the Jayhawk Shootout in Coffeyville.

Johnson-Odom broke the single-game school record with a 46-point outing in a 90-86 loss to Coffeyville on Friday night. The old record belonged to Richard Morsden, who scored 45 points against Dodge City in 1972.

For the game, Johnson-Odom hit 14 of 26 shots, 8 of 17 from 3-point range, and was 10 of 10 from the free-throw line. Johnson-Odom also had nine rebounds, four assists and one steal in 38 minutes, 50 seconds. Johnson-Odom carried the team, especially in the last 12 minutes, scoring 32 points during that span.

Two days later, Johnson-Odom scored 32 points in a 78-48 victory over Kansas City. Johnson-Odom hit 12 of 17 shots, 3 of 7 from long range and was 5 of 6 from the free-throw line. Johnson-Odom had a double-double with 10 rebounds, adding three assists, and a steal in 31:52 of playing time.

Johnson-Odom averaged 39 points per game, hitting 26 of 43 overall shots (60.5 percent), 11 of 24 from 3-point range (45.8 percent) and 15 of 16 from the free-throw line (93.8 percent).

## HOME COOKING GOOD TO BLUE DRAGONS

The Blue Dragons have always enjoyed a strong home-court advantage in the 7,000-seat Sports Arena. With their 70-60 victory over Cloud County on Jan. 14, 2006, the Blue Dragons earned their 700th regular-season victory in the famed basketball venue.

Moving into the Sports Arena in the 1952-53 season, the Blue Dragons have amassed a 752-133 record in this building.

In the 53 years that Hutchinson has called the Sports Arena home; the Blue Dragons have averaged 13.1 wins at home. The 2007-08 team went 17-3 at home.

They went undefeated through an entire home season seven times (1958-59, 1959-60, 1973-74, 1974-75, 1981-82, 1987-88, 2003-04).

Before the Sports Arena, HCC played at Memorial (Convention) Hall from 1928 to 1952 where the Blue Dragons were 112-50.

## FORWARD CLIFF DIXON REINSTATED FOR SECOND SEMESTER

The HCC coaching staff has reinstated sophomore forward Cliff Dixon (Suitland, MD) for the second semester.

Dixon had been suspended since Nov. 19 for conduct detrimental to the team. He missed four games during his suspension. Before the suspension, Dixon was averaging 15.9 points and 7.1 rebounds per game.

In his return to the line-up on Dec. 31, Dixon scored just four points on 2 of 3 shooting, but had eight rebounds and season highs of five assists, three blocked shots and three steals.

Since returning to the lineup, Dixon is averaging 12.6 points per game, shooting 52.8 percent, and 8.2 rebounds per game.

## NOTING THE BLUE DRAGONS

- Tom Shirley is the brother of former Iowa State standout Paul Shirley.
- The last time that Hutchinson allowed 100 points in a game was Jan. 24, 2004, when the Dragons gave up triple digits in a 100-94 loss to Barton County. That's a streak of 259 games.

## SEASON-OPENING SUCCESS

The Blue Dragons have been hard to beat on opening night over the years.

Hutchinson is 59-19 in season openers, winning 11 of the last 12 opening games.

Hutchinson is 64-14 in home openers.

The highest point total for HCC on opening night was 115 points scored against Joliet Junior College in a 115-103 victory in 1977. Hutch has surpassed the century mark five times on opening night: 102 vs. York College in 1965; 115 vs. Joliet in 1977, 101 vs. Western Nebraska in 1990, 107 vs. Malcolm X I 1997 and 100 vs. Malcolm X in 1998.

The largest opening night winning margin was 58 set in 1992, an 88-32 win over Hesston College.

## Blue Dragon Region VI Team Rankings

| Category                  | Rank | Avg./Pct. |
|---------------------------|------|-----------|
| Scoring Offense           | 7    | 78.7      |
| Scoring Defense           | 7    | 68.7      |
| Scoring Margin            | 5    | +10.0     |
| Field Goal Percentage     | 6    | 46.5      |
| 3-Point Percentage        | 10   | 34.2      |
| Free-Throw Percentage     | 6    | 63.5      |
| Defensive Field Goal Pct. | 2    | 38.6      |
| Defensive 3-Point Pct.    | 1    | 27.6      |
| Rebounds                  | 3    | 43.36     |
| Rebounds Against          | 12   | 37.82     |
| Rebounding Margin         | 6    | +5.54     |
| Assists                   | 6    | 16.32     |
| Steals                    | 11   | 8.40      |
| Blocked Shots             | 2    | 5.36      |

## Blue Dragon Region VI Individual Rankings

### SCORING

|                             |          |
|-----------------------------|----------|
| 2. Darius Johnson-Odom..... | 21.2 ppg |
|-----------------------------|----------|

### FIELD-GOAL PERCENTAGE

No players listed

### 3-POINT PERCENTAGE

No players listed

### 3-POINT GOALS GAME PER GAME

|                              |         |
|------------------------------|---------|
| 10. Darius Johnson-Odom..... | 2.04/Gm |
|------------------------------|---------|

### FREE-THROW PERCENTAGE

|                             |       |
|-----------------------------|-------|
| 6. Darius Johnson-Odom..... | 79.1% |
|-----------------------------|-------|

### REBOUNDING

|                            |          |
|----------------------------|----------|
| 7. Dominique Rutledge..... | 7.80 rpg |
| 8. Cliff Dixon .....       | 7.65 rpg |

### ASSISTS

|                             |          |
|-----------------------------|----------|
| 5. Darius Johnson-Odom..... | 4.91 apg |
|-----------------------------|----------|

### BLOCKED SHOTS

|                             |          |
|-----------------------------|----------|
| 5. Dominique Rutledge ..... | 1.43 bpg |
| 6. Cliff Dixon .....        | 1.30 bpg |

### STEALS

No players listed

## 2008-09 BLUE DRAGONS BRING BACK LITTLE EXPERIENCE

Even in Ryan Swanson's first season two years ago at HCC he had more returning experience than he does heading into the 2008-09 season.

The Dragons start as the preseason favorite to win the Jayhawk Conference Western Division and are ranked 20th in the preseason NJCAA Division I poll.

Only two players return with court time with the Blue Dragons from last season.

Those two players – guard Austin Bond and forward Ryan Douvier – played a combined total of 246 minutes.

Bond is a 6-foot-3 guard from Kansas City, Kan. (Piper High School). His freshman season was extremely limited because of injuries. In 13 games, Bond averaged 2.9 points, shooting 31.3 percent from 3-point range.

Douvier is a 6-6 forward from Newton. He saw limited playing time as a freshman, averaging 0.6 points and 0.6 rebounds.

Swanson will have a pair of talented transfers and a group of untested freshmen to try and lead the Blue Dragons to their first Jayhawk West championship since 2004 and the first Region VI crown since 1997.

## JAYHAWK WEST PRESEASON PREDICTIONS

The Blue Dragons were picked to win the 2009 Jayhawk West championship in a poll of league coaches released at the annual Jayhawk Conference Media Day on Oct. 13 in Wichita.

Hutchinson, Cloud County and Barton were the top three picked by the coaches.

Last season, HCC was picked to finish second in the preseason poll.

Cowley College was the prohibitive favorite to win the Jayhawk East in 2009.

### 2008-09 JAYHAWK WEST PREDICTIONS

1. Hutchinson
2. Cloud County
3. Barton
4. Garden City
5. Seward County
6. Dodge City
7. Pratt
8. Butler
9. Colby

## BLUE DRAGON FAMILY LOSES ONE OF ITS GREATS - CORTEZ BARNES

Cortez Barnes, one of the top 3-point shooters and all-around players in HCC men's basketball history, died in a car accident in Texas on Sept. 21, 2008.

Barnes, an All-Jayhawk Conference performer who played at HCC in 1990-91 and 1991-92, was on his way to Wichita from his home in Dallas when the accident occurred.

Barnes, 36, and his wife, Jamai, had six children.

Barnes came to HCC before the 1990-91 season for coach Dave Farrar after a stellar prep career at Wichita Heights.

A versatile 6-foot-7 forward, Barnes became the program's career leader in 3-point field goals, tallying 122 for his career. That mark is still third on the career chart today.

Barnes scored 994 career points at HCC, which ranks 12th on the career chart. He's 10th in made field goals (390) and third in 3-point attempts (350).

During his freshman season in 1990-91, Barnes averaged 16.3 points per game, shooting 44 percent from the field overall and 38.8 percent from behind the 3-point arc. The 62 3-pointers are the sixth-most in single-season history and fourth most by a freshman. The 38.8 percent efficiency ranks sixth on the single-season charts and is tied for seventh on the freshman chart. His 489 points rank seventh on the freshman chart. His scoring average is tied for sixth on the freshman chart.

The Blue Dragons went 21-9 in 1991, Farrar's final season at Hutchinson. Under new head coach Steve McClain, Barnes averaged 14.8 points and hit 31.6 percent from 3-point range. The Dragons were 27-7 and finish as Region VI runner-up to eventual national runner-up Butler County.

## Blue Dragon Season Double-Doubles

Cliff Dixon (season - 6; career 20)

|                                      |                  |
|--------------------------------------|------------------|
| Nov. 8 vs. Weatherford College ..... | 17 pts./12 rebs. |
| Jan. 3 vs. Seward County .....       | 14 pts./10 rebs. |
| Jan. 7 vs. Dodge City .....          | 18 pts./10 rebs. |
| Jan. 10 vs. Garden City .....        | 11 pts./11 rebs. |
| Jan. 21 vs. Barton .....             | 17 pts./11 rebs. |
| Feb. 11 vs. Butler .....             | 23 pts./12 rebs. |

Darius Johnson-Odom (season - 2; career 2)

|                              |                  |
|------------------------------|------------------|
| Nov. 22 vs. Highland .....   | 22 pts./15 rebs. |
| Dec. 7 vs. Kansas City ..... | 32 pts./10 rebs. |

Dominique Rutledge (season - 5; career 5)

|                                |                  |
|--------------------------------|------------------|
| Dec. 5 vs. Coffeyville .....   | 10 pts./10 rebs. |
| Dec. 7 vs. Kansas City .....   | 14 pts./10 rebs. |
| Jan. 3 vs. Seward County ..... | 15 pts./13 rebs. |
| Jan. 21 vs. Barton .....       | 12 pts./10 rebs. |
| Jan. 28 vs. Pratt .....        | 10 pts./14 rebs. |

## 40-Point Games

|  |              |
|--|--------------|
| 46 - Darius Johnson-Odom vs. Coffeyville ..... | Dec. 5, 2008 |
|--|--------------|

## 30-Point Games

|   |               |
|---|---------------|
| 37 - Darius Johnson-Odom vs. Pratt .....        | Jan. 28, 2008 |
| 32 - Darius Johnson-Odom vs. Kansas City .....  | Dec. 7, 2008  |
| 30 - Darius Johnson-Odom vs. Allen County ..... | Nov. 25, 2008 |

## 20-Point Games

|   |               |
|---|---------------|
| 29 - Cliff Dixon vs. Garden City .....              | Feb. 7, 2009  |
| 28 - Darius Johnson-Odom vs. Garden City .....      | Jan. 10, 2009 |
| 27 - Cliff Dixon vs. Clarendon .....                | Nov. 14, 2008 |
| 25 - Darius Johnson-Odom vs. Allen County .....     | Nov. 11, 2008 |
| 24 - Darius Johnson-Odom vs. McCook .....           | Nov. 15, 2008 |
| 24 - Darius Johnson-Odom vs. Dodge City .....       | Jan. 7, 2009  |
| 24 - Devon McBride vs. Butler .....                 | Jan. 14, 2009 |
| 24 - Cliff Dixon vs. Cloud County .....             | Jan. 31, 2009 |
| 24 - Darius Johnson-Odom vs. Dodge City .....       | Feb. 4, 2009  |
| 23 - Devon McBride vs. Sterling College JV .....    | Nov. 6, 2008  |
| 23 - Darius Johnson-Odom vs. Fort Scott .....       | Nov. 7, 2008  |
| 23 - Devon McBride vs. Allen County .....           | Nov. 25, 2008 |
| 23 - Darius Johnson-Odom vs. Garden City .....      | Feb. 7, 2008  |
| 23 - Cliff Dixon vs. Butler .....                   | Feb. 11, 2009 |
| 22 - Darius Johnson-Odom vs. Highland .....         | Nov. 22, 2008 |
| 22 - Dominique Rutledge vs. Central Nebraska .....  | Dec. 13, 2008 |
| 22 - Darius Johnson-Odom vs. Friends JV .....       | Dec. 31, 2008 |
| 21 - Darius Johnson-Odom vs. Seward County .....    | Jan. 3, 2009  |
| 21 - Devon McBride vs. Colby .....                  | Jan. 25, 2009 |
| 21 - Cliff Dixon vs. Seward County .....            | Feb. 2, 2009  |
| 20 - Darius Johnson-Odom vs. St. Mary JV .....      | Oct. 31, 2008 |
| 20 - Darius Johnson-Odom vs. Central Nebraska ..... | Dec. 13, 2008 |

## 10-Rebound Games

|   |               |
|---|---------------|
| 15 - Darius Johnson-Odom vs. Highland .....     | Nov. 22, 2008 |
| 13 - Javari Williams vs. Coffeyville .....      | Dec. 5, 2008  |
| 14 - Dominique Rutledge vs. Pratt .....         | Jan. 28, 2009 |
| 13 - Dominique Rutledge vs. Seward County ..... | Jan. 3, 2009  |
| 13 - Dominique Rutledge vs. Cloud County .....  | Jan. 31, 2009 |
| 12 - Tom Shirley vs. Labette .....              | Nov. 1, 2008  |
| 12 - Cliff Dixon vs. Weatherford College .....  | Nov. 8, 2008  |
| 12 - Cliff Dixon vs. Butler .....               | Feb. 11, 2009 |
| 11 - Cliff Dixon vs. Dodge City .....           | Jan. 7, 2009  |
| 11 - Cliff Dixon vs. Garden City .....          | Jan. 10, 2009 |
| 11 - Cliff Dixon vs. Barton .....               | Jan. 21, 2009 |
| 10 - Ryan Douvier vs. St. Mary JV .....         | Oct. 31, 2008 |
| 10 - Dominique Rutledge vs. Coffeyville .....   | Dec. 5, 2008  |
| 10 - Darius Johnson-Odom vs. Kansas City .....  | Dec. 7, 2008  |
| 10 - Dominique Rutledge vs. Kansas City .....   | Dec. 7, 2008  |
| 10 - Cliff Dixon vs. Seward County .....        | Jan. 3, 2009  |
| 10 - Dominique Rutledge vs. Barton .....        | Jan. 21, 2009 |

## 2008-09 Blue Dragon Men's Basketball Game-By-Game Review

| Date    | Opponent              | Score         | Record (JC) | Points            | Rebounds              | Assists             | Steals                  |
|---------|-----------------------|---------------|-------------|-------------------|-----------------------|---------------------|-------------------------|
| Oct. 31 | U. of St.Mary JV*     | W, 86-54      | 1-0         | 20 - Johnson-Odom | 10 - Douvier          | 6 - Johnson         | 2 - 4 tied              |
| Nov. 1  | Labette*              | W, 79-57      | 2-0         | 19 - Dixon        | 12 - Shirley          | 8 - Johnson-Odom    | 3 - Johnson-Odom, Dixon |
| Nov. 6  | Sterling College JV^  | W, 102-45     | 3-0         | 23 - McBride      | 9 - Shirley           | 9 - Johnson         | 5 - Williams            |
| Nov. 7  | Fort Scott^           | W, 81-62      | 4-0         | 23 - Johnson-Odom | 9 - Johnson           | 5 - Johnson/J.-Odom | 2 - Dixon, Johnson      |
| Nov. 8  | Wetherford College^   | W, 97-68      | 5-0         | 19 - Shirley      | 12 - Dixon            | 7 - Johnson         | 3 - Dixon               |
| Nov. 11 | Allen County          | W, 79-53      | 6-0         | 25 - Johnson-Odom | 7 - Johnson-Odom      | 9 - Johnson-Odom    | 3 - Rutledge            |
| Nov. 14 | Clarendon College#    | W, 88-78      | 7-0         | 27 - Dixon        | 7 - Dixon; J.-Odom    | 6 - Johnson-Odom    | 2 - J.-Odom, Dixon      |
| Nov. 15 | McCook#               | L, 68-70      | 7-1         | 24 - Johnson-Odom | 7 - Shirley, Dixon    | 5 - Bond            | 2 - Williams            |
| Nov. 22 | Highland              | W, 79-72      | 8-1         | 22 - Johnson-Odom | 15 - Johnson-Odom     | 6 - Johnson/J.-Odom | 1 - Johnson/J.-Odom     |
| Nov. 25 | Allen County          | L, 70-72      | 8-2         | 30 - Johnson-Odom | 6 - Rutledge          | 3 - McBride         | 4 - Johnson-Odom        |
| Dec. 5  | Coffeyville+          | L 86-90       | 8-3         | 46 - Johnson-Odom | 13 - Williams         | 5 - Williams        | 2 - Williams            |
| Dec. 7  | Kansas City+          | W, 78-48      | 9-3         | 32 - Johnson-Odom | 10 - J.-Odom/Rutledge | 4 - Johnson         | 4 - Williams            |
| Dec. 13 | Central Nebraska      | W, 96-73      | 10-3        | 22 - Rutledge     | 9 - Johnson-Odom      | 9 - Johnson-Odom    | 3 - J-Odom/Rutledge     |
| Dec. 31 | Friends University JV | W, 94-55      | 11-3        | 22 - Johnson-Odom | 9 - Rutledge          | 7 - Johnson         | 4 - J.-Odom/Banks       |
| Jan. 3  | Seward County         | W, 76-69      | 12-3 (1-0)  | 21 - Johnson-Odom | 13 - Rutledge         | 4 - Johnson-Odom    | 3 - Williams            |
| Jan. 7  | Dodge City            | W, 86-74      | 13-3 (2-0)  | 24 - Johnson-Odom | 11 - Dixon            | 7 - Johnson-Odom    | 1 - 4 tied              |
| Jan. 10 | Garden City           | W, 82-80      | 14-3 (3-0)  | 28 - Johnson-Odom | 11 - Dixon            | 3 - 4 tied          | 2 - 3 tied              |
| Jan. 14 | Butler                | L, 60-86      | 14-4 (3-1)  | 24 - McBride      | 7 - Rutledge          | 8 - Johnson-Odom    | 2 - 3 tied              |
| Jan. 21 | Barton                | W, 74-70      | 15-4 (4-1)  | 17 - Dixon        | 11 - Dixon            | 8 - Johnson-Odom    | 2 - J.-Odom/Williams    |
| Jan. 25 | Colby                 | L, 50-73      | 15-5 (4-2)  | 21 - McBride      | 9 - Dixon             | 3 - Shirley, Banks  | 3 - J.-Odom/Williams    |
| Jan. 28 | Pratt                 | W, 83-66      | 16-5 (5-2)  | 37 - Johnson-Odom | 14 - Rutledge         | 3 - 3 tied          | 1 - 6 tied              |
| Jan. 31 | Cloud County          | L, 70-71 (OT) | 16-6 (5-3)  | 24 - Dixon        | 13 - Rutledge         | 3 - J-Odom/Dixon    | 2 - Williams            |
| Feb. 2  | Seward County         | L, 58-82      | 16-7 (5-4)  | 21 - Dixon        | 9 - Rutledge          | 4 - Johnson-Odom    | 2 - Williams, Rutledge  |
| Feb. 4  | Dodge City            | L, 68-71      | 16-8 (5-5)  | 24 - Johnson-Odom | 9 - Dixon             | 4 - Johnson-Odom    | 6 - Dixon               |
| Feb. 7  | Garden City           | L, 77-79      | 16-9 (5-6)  | 29 - Dixon        | 9 - Dixon             | 4 - Johnson/Bond    | 3 - Bond                |
| Feb. 11 | Butler                | W, 55-48      | 17-9 (6-6)  | 23 - Dixon        | 12 - Dixon            | 3 - Johnson-Odom    | 2 - J.-Odom/Williams    |
| Feb. 18 | Barton                |               |             |                   |                       |                     |                         |
| Feb. 21 | Colby                 |               |             |                   |                       |                     |                         |
| Feb. 25 | Pratt                 |               |             |                   |                       |                     |                         |
| Feb. 28 | Cloud County          |               |             |                   |                       |                     |                         |

\* - Quarterback Classic; ^ - Grand Prairie Classic; # - Airport Steakhouse Classic; + - Jayhawk Shootout at Coffeyville

### Record by Starting Lineup

|   |     |
|---|-----|
| Johnson-Odom, McBride, Johnson, Shirley, Douvier.....   | 2-0 |
| Johnson-Odom, McBride, Dixon, Johnson, Shirley .....    | 4-0 |
| Johnson-Odom, McBride, Dixon, Shirley, Bond .....       | 1-1 |
| Johnson-Odom, McBride, Shirley, Bond, Douvier .....     | 1-0 |
| Johnson-Odom, McBride, Johnson, Shirley, Rutledge.....  | 0-1 |
| Johnson-Odom, Johnson, Williams, Shirley, Rutledge..... | 1-1 |
| Johnson-Odom, Johnson, Shirley, Banks, Rutledge .....   | 4-3 |
| Johnson-Odom, Johnson, Williams, Shirley, Rutledge..... | 1-0 |
| Johnson-Odom, McBride, Shirley, Banks, Rutledge .....   | 2-1 |
| Johnson-Odom, Dixon, Williams, Banks, Rutledge .....    | 1-2 |

### Blue Dragon Win/Loss Margin

| Margin | Win | Loss |     |   |
|--------|-----|------|-----|---|
| 11     | 0   | 11   | 0   | 0 |
| 12     | 1   | 12   | 1   | 0 |
| 13     | 0   | 13   | 0   | 0 |
| 14     | 0   | 14   | 0   | 0 |
| 15     | 0   | 15   | 0   | 0 |
| 16     | 0   | 16   | 0   | 0 |
| 17     | 1   | 17   | 1   | 0 |
| 18     | 0   | 18   | 0   | 0 |
| 19     | 1   | 19   | 1   | 0 |
| 20     | 0   | 20   | 0   | 0 |
| 20+    | 8   | 0    | 20+ | 8 |

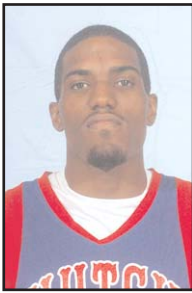
## 2008-09 Blue Dragon Individual/Team Superlatives

|                               |  |   |
|-------------------------------|--|---|
|                               | <b>HCC INDIVIDUAL HIGH</b>   | <b>OPPONENT INDIVIDUAL HIGH</b>                               |
| Points Scored                 | 46 - Darius Johnson-Odom vs. Coffeyville   | 38 - Shamar Acuay, Colby                                      |
| Field Goals                   | 14 - Darius Johnson-Odom vs. Coffeyville   | 15 - Shamar Acuay, Colby                                      |
| Field Goal Attempts           | 26 - Darius Johnson-Odom vs. Coffeyville   | 25 - Shamar Acuay, Colby                                      |
| Field goal Pct. (min. 5 att.) | 80.0 - Javari Williams vs. Sterling JV (4-5)<br>80.0 - Devon McBride vs. Weatherford (4-5)<br>80.0 - Javari Williams vs. Highland (4-5)<br>80.0 - Austin Bond vs. Friends JV (4-5) | 77.8 - Danny Agbelese, Clarendon (7-9)                        |
| 3-Pointers                    | 8 - Darius Johnson-Odom vs. Coffeyville  | 4 - Tyler Nordman, Highland<br>4 - Fred Williams, Garden City |
| 3-Point Attempts              | 17 - Darius Johnson-Odom vs. Coffeyville   | 10 - Tyler Nordman, Highland                                  |
| 3-Point Pct. (min. 3 att.)    | 100.0 - Tom Shirley vs. Allen County (4-4)<br>100.0 - Cody Beaton vs. Friends JV (4-4)   | 100.0 - Aaron Jackson, Allen County (3-3)                     |
| Free Throws                   | 14 - Darius Johnson-Odom vs. Pratt   | 12 - Marcus Brister, Weatherford                              |
| Free-Throw Attempts           | 19 - Darius Johnson-Odom vs. Pratt   | 17 - Marcus Brister, Weatherford                              |
| Free-Throw Pct. (min. 5 att.) | 100.0 - Darius Johnson-Odom vs. McCook (13-13)   | 87.5 - Antoine Branch, Coffeyville (7-8)                      |
| Rebounds                      | 15 - Darius Johnson-Odom vs. Highland  | 20 - Shamar Acuay, Colby                                      |
| Assists                       | 9 - Lazarius Johnson vs. Sterling College JV<br>9 - Darius Johnson-Odom - 2 times (last vs. Central Nebraska)  | 10 - Bob Wesley, Garden City                                  |
| Blocked Shots                 | 5 - Austin Bond vs. Barton   | 4 - Danny Agbelese, Clarendon                                 |
| Steals                        | 6 - Cliff Dixon vs. Dodge City   | 9 - Shamar Acuay, Colby                                       |
|                               | <b>HCC TEAM HIGHS</b>  | <b>HCC TEAM LOWS</b>  |
| Points scored                 | 102 - Sterling College JV  | 50 - Colby  |
| One half                      | 56 - Dodge City  | 16 - Dodge City   |
| FG made                       | 39 - Sterling College JV   | 18 - McCook, Dodge City                                       |
| FG attempts                   | 74 - Central Nebraska  | 41 - Cloud County   |
| FG percentage                 | 64.2 - Dodge City (34-53)  | 30.2 - Colby (19-63)  |
| 3-pt made                     | 11 - Coffeyville, Friends JV   | 0 - Clarendon   |
| 3-pt attempts                 | 30 - Coffeyville   | 8 - Clarendon   |
| 3-pt percentage               | 61.1 - Friends JV (11-18)  | 0.0 - Clarendon (0-8)   |
| FT made                       | 31 - McCook  | 8 - Colby   |
| FT attempts                   | 48 - Pratt   | 15 - Allen County   |
| FT percentage                 | 83.8 - McCook (31-37)  | 39.1 - Seward County (9-23)                                   |
| Rebounds                      | 54 - Weatherford, Clarendon  | 26 - Colby  |
| Personal Fouls                | 25 - Weatherford   | 14 - McCook   |
| Assists                       | 27 - Sterling College JV   | 8 - Seward County   |
| Turnovers                     | 28 - Clarendon   | 11 - Highland   |
| Blocked shots                 | 13 - Barton  | 1 - Fort Scott  |
| Steals                        | 19 - Friends JV  | 2 - Highland  |
|                               | <b>OPPONENT TEAM HIGHS</b>   | <b>OPPONENT TEAM LOWS</b>                                     |
| Points scored                 | 90 - Coffeyville   | 45 - Sterling College JV                                      |
| One half                      | 47 - Clarendon, Highland   | 27 - Butler   |
| FG made                       | 34 - Butler  | 15 - Butler   |
| FG attempts                   | 91 - Clarendon   | 48 - Dodge City   |
| FG percentage                 | 52.1 - Dodge City (25-48)  | 23.4 - Butler (15-64)   |
| 3-pt made                     | 11 - Coffeyville   | 2 - Clarendon   |
| 3-pt attempts                 | 31 - Highland  | 9 - Dodge City  |
| 3-pt percentage               | 46.7 - Allen County (7-15)   | 10.7 - Pratt (3-28)   |
| FT made                       | 19 - Coffeyville, Barton   | 5 - Sterling College JV                                       |
| FT attempts                   | 29 - Garden City   | 10 - Sterling College JV                                      |
| FT percentage                 | 94.4 - Seward County (17-18)   | 35.3 - Kansas City (6-17)                                     |
| Rebounds                      | 53 - Butler  | 27 - Highland   |
| Personal Fouls                | 31 - Cloud County  | 14 - St. Mary JV  |
| Assists                       | 17 - McCook, Allen County, Coffeyville, Butler   | 8 - Barton, Cloud County, Butler                              |
| Turnovers                     | 31 - Sterling College JV   | 7 - Highland  |
| Blocked shots                 | 6 - Labette, Garden City, Barton   | 0 - Sterling College JV, Highland, Butler                     |
| Steals                        | 18 - Seward County   | 3 - Highland  |

## 2008-09 Team Game-by-Game Comparisons

|                       | Pts     | FG-FGA | Pct. | 3FG/3FGA | Pct. | FT-FTA | Pct. | O-D   | Reb. | PF | A  | TO | BS | S  |
|-----------------------|---------|--------|------|----------|------|--------|------|-------|------|----|----|----|----|----|
| at Hutchinson         | 86      | 31-70  | 44.3 | 6-24     | 25.0 | 18-22  | 81.8 | 16-33 | 49   | 17 | 19 | 16 | 4  | 12 |
| U. of St. Mary JV     | 54      | 20-61  | 32.8 | 7-24     | 29.2 | 7-11   | 63.6 | 9-25  | 34   | 14 | 12 | 25 | 1  | 11 |
| at Hutchinson         | 79      | 26-64  | 45.3 | 4-17     | 23.5 | 17-37  | 45.9 | 20-31 | 51   | 18 | 21 | 16 | 4  | 10 |
| Labette               | 57      | 19-66  | 28.8 | 3-18     | 16.7 | 16-23  | 69.6 | 20-26 | 46   | 28 | 10 | 20 | 6  | 8  |
| at Hutchinson         | 102     | 39-65  | 60.0 | 10-22    | 45.5 | 14-29  | 48.3 | 17-26 | 43   | 18 | 27 | 12 | 7  | 18 |
| Sterling College JV   | 45      | 18-51  | 35.3 | 4-13     | 30.8 | 5-10   | 50.0 | 11-18 | 29   | 23 | 10 | 31 | 0  | 7  |
| at Hutchinson         | 81      | 32-66  | 48.5 | 7-16     | 43.8 | 10-17  | 58.8 | 16-30 | 46   | 15 | 19 | 14 | 1  | 6  |
| Fort Scott            | 62      | 23-65  | 35.4 | 4-19     | 21.1 | 12-17  | 70.6 | 13-22 | 35   | 15 | 12 | 13 | 4  | 6  |
| at Hutchinson         | 97      | 37-67  | 55.2 | 5-14     | 35.7 | 18-31  | 58.1 | 19-35 | 54   | 25 | 26 | 20 | 5  | 6  |
| Weatherford           | 68      | 24-67  | 35.8 | 4-26     | 15.4 | 16-28  | 57.1 | 14-32 | 32   | 24 | 10 | 12 | 3  | 8  |
| Hutchinson            | 79      | 28-55  | 50.9 | 7-15     | 46.7 | 16-28  | 57.1 | 10-31 | 41   | 17 | 16 | 21 | 6  | 11 |
| at Allen County       | 53      | 20-56  | 35.7 | 6-24     | 25.0 | 7-14   | 50.0 | 10-24 | 34   | 26 | 13 | 22 | 5  | 12 |
| at Hutchinson         | 88      | 30-62  | 48.4 | 0-8      | 0.0  | 28-38  | 73.7 | 16-38 | 54   | 18 | 17 | 28 | 6  | 7  |
| Clarendon             | 78      | 32-91  | 35.2 | 2-18     | 11.1 | 12-20  | 60.0 | 25-21 | 46   | 28 | 14 | 18 | 5  | 15 |
| at Hutchinson         | 68      | 18-58  | 31.0 | 1-14     | 7.1  | 31-37  | 83.8 | 15-26 | 41   | 14 | 9  | 10 | 6  | 3  |
| McCook                | 70      | 28-63  | 44.4 | 5-21     | 23.8 | 9-17   | 52.9 | 12-29 | 41   | 16 | 17 | 12 | 3  | 5  |
| at Hutchinson         | 79      | 25-55  | 47.3 | 9-19     | 47.4 | 18-28  | 64.3 | 15-30 | 45   | 19 | 19 | 11 | 5  | 2  |
| Highland              | 72      | 23-57  | 40.4 | 10-31    | 32.3 | 16-23  | 69.6 | 7-20  | 27   | 20 | 13 | 7  | 0  | 3  |
| at Hutchinson         | 70      | 22-55  | 40.0 | 8-24     | 33.3 | 18-3   | 78.3 | 11-21 | 32   | 17 | 12 | 19 | 6  | 7  |
| Allen County          | 72      | 28-57  | 49.1 | 7-15     | 46.7 | 9-18   | 50.0 | 13-25 | 38   | 19 | 17 | 19 | 4  | 8  |
| Hutchinson            | 86      | 29-68  | 42.6 | 11-30    | 36.7 | 17-22  | 77.3 | 22-23 | 45   | 22 | 16 | 16 | 4  | 5  |
| vs. Coffeyville       | 90      | 30-64  | 46.9 | 11-26    | 42.6 | 19-28  | 67.9 | 17-21 | 38   | 23 | 17 | 13 | 2  | 7  |
| Hutchinson            | 78      | 30-59  | 50.8 | 6-14     | 42.9 | 12-19  | 63.2 | 15-34 | 49   | 16 | 16 | 15 | 6  | 9  |
| vs. Kansas City       | 48      | 18-58  | 21.0 | 6-30     | 20.0 | 6-17   | 35.3 | 13-19 | 32   | 15 | 12 | 15 | 4  | 8  |
| at Hutchinson         | 96      | 37-74  | 50.0 | 10-22    | 45.5 | 12-19  | 63.2 | 16-31 | 47   | 20 | 23 | 14 | 8  | 10 |
| Central Nebraska      | 73      | 26-77  | 33.8 | 6-23     | 26.1 | 15-20  | 75.0 | 23-24 | 47   | 19 | 14 | 20 | 1  | 4  |
| Hutchinson            | 94      | 34-66  | 51.5 | 11-18    | 61.1 | 15-27  | 55.6 | 19-23 | 42   | 15 | 24 | 20 | 5  | 19 |
| Friends University JV | 55      | 21-58  | 36.2 | 3-16     | 18.8 | 10-11  | 90.9 | 13-21 | 34   | 24 | 14 | 30 | 1  | 10 |
| at Hutchinson         | 76      | 26-60  | 43.3 | 4-15     | 26.7 | 20-26  | 76.9 | 18-27 | 45   | 17 | 8  | 25 | 3  | 8  |
| Seward County         | 69      | 26-72  | 36.1 | 4-21     | 19.0 | 13-17  | 76.5 | 22-20 | 42   | 18 | 12 | 19 | 1  | 18 |
| Hutchinson            | 86      | 34-53  | 64.2 | 6-10     | 60.0 | 12-17  | 70.6 | 7-32  | 39   | 17 | 17 | 18 | 3  | 4  |
| at Dodge City         | 74      | 30-71  | 42.3 | 6-14     | 42.9 | 8-14   | 57.1 | 13-15 | 28   | 16 | 9  | 8  | 1  | 10 |
| at Hutchinson         | 82      | 25-56  | 44.6 | 5-12     | 41.7 | 27-42  | 64.3 | 21-29 | 50   | 21 | 11 | 21 | 5  | 8  |
| Garden City           | 80      | 26-66  | 39.4 | 10-27    | 37.0 | 18-29  | 62.1 | 17-20 | 37   | 29 | 14 | 13 | 6  | 15 |
| Hutchinson            | 60      | 21-48  | 43.8 | 2-13     | 15.4 | 16-27  | 59.3 | 10-18 | 28   | 18 | 17 | 23 | 7  | 9  |
| at Butler             | 86      | 34-72  | 47.2 | 6-18     | 33.3 | 12-16  | 75.0 | 22-24 | 46   | 24 | 17 | 16 | 0  | 15 |
| at Hutchinson         | 74      | 25-60  | 41.7 | 3-14     | 21.4 | 21-30  | 70.0 | 9-37  | 46   | 18 | 15 | 21 | 13 | 7  |
| Barton                | 70      | 23-73  | 31.5 | 5-19     | 26.3 | 19-23  | 82.6 | 15-30 | 45   | 25 | 8  | 19 | 6  | 12 |
| Hutchinson            | 50      | 19-63  | 30.2 | 4-25     | 16.0 | 8-16   | 50.0 | 17-26 | 43   | 17 | 12 | 28 | 5  | 9  |
| at Colby              | 73      | 27-67  | 40.3 | 5-13     | 38.5 | 14-19  | 73.7 | 16-32 | 48   | 15 | 9  | 19 | 4  | 17 |
| at Hutchinson         | 83      | 25-47  | 53.2 | 5-12     | 41.7 | 28-48  | 58.3 | 11-41 | 52   | 18 | 12 | 24 | 9  | 6  |
| Pratt                 | 66      | 25-88  | 28.4 | 3-28     | 10.7 | 13-19  | 68.4 | 25-22 | 47   | 29 | 11 | 13 | 3  | 15 |
| Hutchinson            | 70      | 21-41  | 51.2 | 5-13     | 38.5 | 23-39  | 59.0 | 5-31  | 36   | 20 | 13 | 21 | 5  | 4  |
| at Cloud County       | 71 (OT) | 27-67  | 40.3 | 6-23     | 26.1 | 11-21  | 52.4 | 16-25 | 41   | 31 | 8  | 16 | 3  | 8  |
| Hutchinson            | 58      | 25-52  | 42.3 | 5-16     | 31.3 | 9-23   | 39.1 | 15-22 | 37   | 18 | 13 | 25 | 3  | 6  |
| at Seward County      | 82      | 28-50  | 50.0 | 9-17     | 52.9 | 17-18  | 94.4 | 6-21  | 27   | 19 | 18 | 14 | 3  | 16 |
| at Hutchinson         | 68      | 18-50  | 36.0 | 5-18     | 27.8 | 27-41  | 65.9 | 16-19 | 35   | 24 | 9  | 22 | 3  | 17 |
| Dodge City            | 71      | 25-48  | 52.1 | 3-9      | 33.3 | 18-26  | 69.2 | 7-24  | 31   | 29 | 16 | 24 | 3  | 8  |
| Hutchinson            | 77      | 27-57  | 47.4 | 5-16     | 31.3 | 18-27  | 66.7 | 12-21 | 33   | 17 | 18 | 15 | 3  | 7  |
| at Garden City        | 79      | 32-67  | 47.8 | 6-18     | 33.3 | 9-18   | 50.0 | 19-22 | 41   | 20 | 19 | 16 | 3  | 7  |
| at Hutchinson         | 55      | 19-52  | 36.5 | 4-12     | 33.3 | 13-24  | 54.2 | 9-28  | 37   | 20 | 11 | 18 | 6  | 9  |
| Butler                | 48      | 15-64  | 23.4 | 4-25     | 16.0 | 14-20  | 70.0 | 24-29 | 53   | 23 | 8  | 23 | 3  | 9  |
| Hutchinson            |         |        |      |          |      |        |      |       |      |    |    |    |    |    |
| at Barton             |         |        |      |          |      |        |      |       |      |    |    |    |    |    |
| at Hutchinson         |         |        |      |          |      |        |      |       |      |    |    |    |    |    |
| Colby                 |         |        |      |          |      |        |      |       |      |    |    |    |    |    |
| Hutchinson            |         |        |      |          |      |        |      |       |      |    |    |    |    |    |
| at Pratt              |         |        |      |          |      |        |      |       |      |    |    |    |    |    |
| at Hutchinson         |         |        |      |          |      |        |      |       |      |    |    |    |    |    |
| Cloud County          |         |        |      |          |      |        |      |       |      |    |    |    |    |    |

## 2008-09 Blue Dragon Player Season Recaps



### Darius Johnson-Odom

Height - 6-2  
 Year - Freshman  
 Position - Guard  
 Hometown - Raleigh, N.C.

#### Johnson-Odom's Season Highs

|                     |       |                                       |
|---------------------|-------|---------------------------------------|
| Points              | 46    | - Coffeyville                         |
| Field Goals         | 14    | - Coffeyville                         |
| Field Goal Attempts | 26    | - Coffeyville                         |
| 3-Pointers          | 8     | - Coffeyville                         |
| 3-Point Attempts    | 17    | - Coffeyville                         |
| Free Throws         | 14    | - Pratt                               |
| Free-Throw Attempts | 19    | - Pratt                               |
| Rebounds            | 15    | - Highland                            |
| Assists             | 9     | - 2 times (last vs. Central Nebraska) |
| Blocked Shots       | 3     | - 2 times (last vs. Pratt)            |
| Steals              | 4     | - 2 times (last vs. Friends JV)       |
| Minutes Played      | 40:00 | - McCook                              |

| Opponent               | FG-A  | 3Pt-A | FT-A  | Pts | OR | DR | TR | PF | A | TO | B | S | Min   |
|------------------------|-------|-------|-------|-----|----|----|----|----|---|----|---|---|-------|
| St. Mary JV*           | 9-14  | 2-5   | 0-0   | 20  | 0  | 2  | 2  | 1  | 3 | 4  | 0 | 2 | 28:59 |
| Labette*               | 5-13  | 1-4   | 3-5   | 14  | 0  | 9  | 9  | 2  | 8 | 7  | 1 | 3 | 33:21 |
| Sterling JV*           | 5-8   | 3-6   | 2-3   | 15  | 1  | 2  | 3  | 3  | 5 | 1  | 0 | 3 | 20:10 |
| Fort Scott*            | 7-15  | 3-6   | 6-9   | 23  | 3  | 3  | 6  | 2  | 5 | 1  | 0 | 0 | 32:57 |
| Weatherford*           | 5-10  | 0-2   | 6-8   | 16  | 1  | 6  | 7  | 2  | 6 | 4  | 0 | 0 | 29:21 |
| Allen County*          | 8-14  | 0-3   | 9-10  | 25  | 0  | 7  | 7  | 0  | 9 | 4  | 2 | 2 | 31:45 |
| Clarendon*             | 7-15  | 0-3   | 3-8   | 17  | 2  | 5  | 7  | 4  | 6 | 9  | 0 | 2 | 38:50 |
| McCook*                | 5-16  | 1-5   | 13-13 | 24  | 0  | 3  | 3  | 3  | 2 | 2  | 0 | 0 | 40:00 |
| Highland*              | 8-14  | 3-4   | 3-6   | 22  | 2  | 13 | 15 | 3  | 6 | 3  | 1 | 1 | 34:47 |
| Allen County*          | 10-22 | 5-12  | 5-5   | 30  | 0  | 5  | 5  | 1  | 2 | 2  | 0 | 4 | 36:38 |
| Coffeyville*           | 14-26 | 8-17  | 10-10 | 46  | 2  | 7  | 9  | 1  | 4 | 5  | 0 | 1 | 38:50 |
| Kansas City*           | 12-17 | 3-7   | 5-6   | 32  | 3  | 7  | 10 | 2  | 3 | 4  | 0 | 1 | 31:52 |
| Central Nebraska*      | 8-16  | 2-5   | 2-2   | 20  | 3  | 6  | 9  | 3  | 9 | 4  | 3 | 3 | 29:33 |
| Friends University JV* | 9-14  | 0-1   | 4-8   | 22  | 4  | 0  | 4  | 3  | 4 | 3  | 0 | 4 | 25:01 |
| Seward County*         | 7-15  | 2-5   | 5-6   | 21  | 1  | 3  | 4  | 0  | 4 | 5  | 0 | 1 | 39:30 |
| Dodge City*            | 9-16  | 2-4   | 4-4   | 24  | 1  | 7  | 8  | 2  | 7 | 6  | 1 | 1 | 33:09 |
| Garden City*           | 7-10  | 2-3   | 12-12 | 28  | 3  | 4  | 7  | 4  | 2 | 5  | 1 | 2 | 34:49 |
| Butler*                | 1-9   | 0-5   | 4-6   | 6   | 0  | 2  | 2  | 3  | 8 | 5  | 1 | 2 | 35:22 |
| Barton*                | 3-12  | 0-4   | 9-10  | 15  | 0  | 2  | 2  | 3  | 8 | 7  | 2 | 2 | 37:59 |
| Colby*                 | 1-8   | 0-5   | 1-3   | 3   | 1  | 2  | 3  | 1  | 2 | 4  | 1 | 3 | 30:29 |
| Pratt*                 | 10-15 | 3-5   | 14-19 | 37  | 0  | 3  | 3  | 2  | 3 | 6  | 3 | 0 | 35:58 |
| Cloud County*          | 3-5   | 2-4   | 2-4   | 10  | 0  | 0  | 0  | 4  | 3 | 3  | 0 | 0 | 19:01 |
| Seward County*         | 4-11  | 3-6   | 3-5   | 14  | 2  | 4  | 6  | 3  | 4 | 6  | 0 | 0 | 26:35 |
| Dodge City*            | 5-10  | 3-7   | 11-11 | 24  | 2  | 3  | 5  | 4  | 4 | 5  | 0 | 2 | 32:15 |
| Garden City*           | 6-13  | 3-7   | 8-9   | 23  | 0  | 2  | 2  | 5  | 3 | 5  | 1 | 0 | 33:27 |
| Butler*                | 6-16  | 2-5   | 5-9   | 19  | 1  | 5  | 6  | 1  | 3 | 4  | 0 | 2 | 35:51 |

Barton  
 Colby  
 Pratt  
 Cloud County  
 \* - Indicates Started Game



### Devon McBride

Height - 6-3  
 Year - Sophomore  
 Position - Guard  
 Hometown - Richmond, VA

#### McBride's Season Highs

|                     |       |                            |
|---------------------|-------|----------------------------|
| Points              | 24    | - Butler                   |
| Field Goals         | 9     | - Butler                   |
| Field Goal Attempts | 17    | - Colby                    |
| 3-Pointers          | 4     | - Sterling JV              |
| 3-Point Attempts    | 7     | - 3 times (last vs. Colby) |
| Free Throws         | 10    | - Pratt                    |
| Free-Throw Attempts | 12    | - Labette                  |
| Rebounds            | 7     | - Colby                    |
| Assists             | 4     | - Clarendon                |
| Blocked Shots       | 1     | - 5 times (last vs. Colby) |
| Steals              | 1     | - 4 times (last Pratt)     |
| Minutes Played      | 34:04 | - Clarendon                |

| Opponent      | FG-A | 3Pt-A | FT-A | Pts | OR | DR | TR | PF | A | TO | B | S | Min   |
|---------------|------|-------|------|-----|----|----|----|----|---|----|---|---|-------|
| St. Mary JV*  | 4-7  | 1-4   | 3-4  | 12  | 1  | 2  | 3  | 4  | 0 | 1  | 0 | 0 | 14:52 |
| Labette*      | 3-10 | 2-4   | 6-12 | 14  | 2  | 3  | 5  | 2  | 0 | 0  | 0 | 0 | 20:24 |
| Sterling JV*  | 8-13 | 4-7   | 3-3  | 23  | 1  | 0  | 1  | 2  | 1 | 1  | 0 | 1 | 15:30 |
| Fort Scott*   | 7-16 | 1-4   | 1-2  | 16  | 1  | 2  | 3  | 0  | 0 | 1  | 0 | 0 | 27:44 |
| Weatherford*  | 4-5  | 2-2   | 3-5  | 13  | 2  | 0  | 2  | 1  | 0 | 3  | 0 | 0 | 22:16 |
| Allen County* | 5-11 | 3-6   | 1-1  | 14  | 1  | 3  | 4  | 1  | 2 | 0  | 1 | 0 | 22:28 |
| Clarendon*    | 5-14 | 0-2   | 5-6  | 15  | 4  | 2  | 6  | 1  | 4 | 2  | 0 | 0 | 34:04 |
| McCook*       | 3-11 | 0-3   | 7-7  | 13  | 3  | 2  | 5  | 0  | 0 | 0  | 1 | 0 | 28:00 |
| Highland*     | 5-11 | 2-6   | 6-7  | 18  | 1  | 1  | 2  | 0  | 0 | 1  | 0 | 0 | 25:48 |
| Allen County* | 8-15 | 3-7   | 4-4  | 23  | 3  | 1  | 4  | 2  | 3 | 3  | 1 | 0 | 33:22 |

Coffeyville .....DNP  
 Kansas City .....DNP  
 Central Nebraska .....5-10 2-5 2-2 14 2 1 3 1 0 1 1 0 17:16  
 Friends University JV .....4-11 3-6 0-0 11 2 1 3 2 1 4 0 0 15:45  
 Seward County .....5-12 1-2 3-3 14 4 0 4 3 0 3 0 0 21:36  
 Dodge City .....1-3 1-1 2-2 5 0 1 1 2 3 1 0 0 15:00  
 Garden City .....2-8 0-3 5-6 9 3 3 6 1 1 1 0 0 22:44  
 Butler .....9-13 0-1 6-10 24 1 3 4 0 1 0 0 1 30:05  
 Barton\* .....3-10 1-3 0-1 7 0 3 3 1 3 1 0 1 18:37  
 Colby\* .....8-17 2-7 3-4 21 3 4 7 0 0 3 1 0 27:01  
 Pratt\* .....4-6 1-1 6-10 15 0 4 4 1 1 3 0 1 25:14  
 Cloud County .....DNP  
 Seward County .....DNP  
 Dodge City .....DNP  
 Garden City .....DNP  
 Butler .....DNP  
 Barton  
 Colby  
 Pratt  
 Cloud County  
 \* - Indicates Started Game

## 2008-09 Blue Dragon Player Season Recaps



### Cliff Dixon

Height - 6-9  
Year - Sophomore  
Position - Forward  
Hometown - Suitland, MD

#### Dixon's Season Highs

|                     |       |   |                           |
|---------------------|-------|---|---------------------------|
| Points              | 29    | - | Garden City               |
| Field Goals         | 11    | - | Garden City               |
| Field Goal Attempts | 20    | - | Garden City               |
| 3-Pointers          | 1     | - | 3 times (last vs. Pratt)  |
| 3-Point Attempts    | 3     | - | 2 times (last vs. Pratt)  |
| Free Throws         | 9     | - | Clarendon                 |
| Free-Throw Attempts | 13    | - | 2 times (last vs. Butler) |
| Rebounds            | 12    | - | 2 times (last vs. Butler) |
| Assists             | 5     | - | Friends JV                |
| Blocked Shots       | 4     | - | Garden City               |
| Steals              | 3     | - | Friends JV                |
| Minutes Played      | 30:41 | - | Garden City               |

| Opponent              | FG-A  | 3PI-A | FT-A  | Pts | OR | DR | TR | PF | A | TO | B | S | Min   |
|-----------------------|-------|-------|-------|-----|----|----|----|----|---|----|---|---|-------|
| St. Mary JV           | 4-9   | 0-0   | 5-6   | 13  | 4  | 3  | 7  | 2  | 3 | 3  | 1 | 1 | 14:10 |
| Labette               | 8-13  | 0-1   | 3-5   | 19  | 1  | 3  | 4  | 1  | 0 | 4  | 1 | 3 | 26:20 |
| Sterling JV*          | 8-11  | 0-0   | 2-6   | 18  | 3  | 4  | 7  | 1  | 3 | 0  | 1 | 1 | 20:09 |
| Fort Scott*           | 5-10  | 0-1   | 1-2   | 11  | 2  | 5  | 7  | 2  | 3 | 2  | 0 | 2 | 23:46 |
| Weatherford*          | 7-15  | 1-2   | 2-4   | 17  | 6  | 6  | 12 | 2  | 4 | 6  | 2 | 3 | 29:03 |
| Allen County*         | 5-9   | 0-0   | 1-1   | 11  | 1  | 5  | 6  | 2  | 2 | 5  | 0 | 1 | 26:11 |
| Clarendon*            | 9-17  | 0-1   | 9-12  | 27  | 2  | 5  | 7  | 0  | 4 | 3  | 0 | 2 | 27:55 |
| McCook*               | 4-15  | 0-1   | 3-4   | 11  | 3  | 4  | 7  | 3  | 0 | 2  | 1 | 0 | 23:32 |
| Highland              | DNP   |       |       |     |    |    |    |    |   |    |   |   |       |
| Allen County          | DNP   |       |       |     |    |    |    |    |   |    |   |   |       |
| Coffeyville           | DNP   |       |       |     |    |    |    |    |   |    |   |   |       |
| Kansas City           | DNP   |       |       |     |    |    |    |    |   |    |   |   |       |
| Central Nebraska      | DNP   |       |       |     |    |    |    |    |   |    |   |   |       |
| Friends University JV | 1-3   | 0-0   | 2-6   | 4   | 3  | 5  | 8  | 1  | 5 | 4  | 3 | 3 | 20:48 |
| Seward County         | 7-15  | 0-3   | 0-0   | 14  | 4  | 6  | 10 | 3  | 0 | 6  | 2 | 2 | 26:10 |
| Dodge City            | 8-11  | 0-1   | 2-4   | 18  | 1  | 10 | 11 | 1  | 2 | 2  | 2 | 0 | 23:22 |
| Garden City           | 3-11  | 0-0   | 5-6   | 11  | 3  | 8  | 11 | 4  | 2 | 5  | 4 | 2 | 30:41 |
| Butler                | 3-6   | 1-1   | 2-3   | 9   | 1  | 1  | 2  | 1  | 0 | 5  | 0 | 0 | 16:46 |
| Barton                | 5-9   | 0-0   | 7-12  | 17  | 2  | 9  | 11 | 3  | 0 | 3  | 3 | 0 | 26:43 |
| Colby                 | 5-9   | 0-1   | 0-2   | 10  | 5  | 4  | 9  | 2  | 0 | 6  | 0 | 0 | 16:20 |
| Pratt                 | 3-8   | 1-3   | 2-6   | 9   | 0  | 7  | 7  | 1  | 1 | 4  | 2 | 1 | 19:02 |
| Cloud County          | 7-10  | 0-1   | 10-13 | 24  | 1  | 5  | 6  | 4  | 3 | 7  | 1 | 0 | 29:59 |
| Seward County         | 9-17  | 0-0   | 3-5   | 21  | 2  | 4  | 6  | 1  | 1 | 5  | 1 | 1 | 29:29 |
| Dodge City*           | 6-15  | 0-0   | 7-11  | 19  | 2  | 7  | 9  | 3  | 0 | 5  | 1 | 0 | 36:36 |
| Garden City*          | 11-20 | 0-0   | 7-10  | 29  | 2  | 7  | 9  | 1  | 0 | 3  | 1 | 2 | 27:42 |
| Butler*               | 8-17  | 0-0   | 7-13  | 23  | 2  | 10 | 12 | 2  | 2 | 5  | 2 | 1 | 37:26 |
| Barton                |       |       |       |     |    |    |    |    |   |    |   |   |       |
| Colby                 |       |       |       |     |    |    |    |    |   |    |   |   |       |
| Pratt                 |       |       |       |     |    |    |    |    |   |    |   |   |       |
| Cloud County          |       |       |       |     |    |    |    |    |   |    |   |   |       |

\* - Indicates Started Game



### Lazarius 'Ty' Johnson

Height - 6-3  
Year - Freshman  
Position - Guard  
Hometown - Miami, Fla

#### Johnson's Season Highs

|                     |       |   |                                |
|---------------------|-------|---|--------------------------------|
| Points              | 13    | - | Kansas City                    |
| Field Goals         | 5     | - | 2 times (last vs. Kansas City) |
| Field Goal Attempts | 10    | - | Garden City                    |
| 3-Pointers          | 2     | - | 4 times (last vs. Garden City) |
| 3-Point Attempts    | 4     | - | 2 times (last vs. Garden City) |
| Free Throws         | 5     | - | Allen County                   |
| Free-Throw Attempts | 5     | - | Allen County                   |
| Rebounds            | 9     | - | Fort Scott                     |
| Assists             | 9     | - | Sterling College JV            |
| Blocked Shots       | 1     | - | Highland                       |
| Steals              | 4     | - | Sterling College JV            |
| Minutes Played      | 36:35 | - | Cloud County                   |

| Opponent               | FG-A | 3PI-A | FT-A | Pts | OR | DR | TR | PF | A | TO | B | S | Min   |
|------------------------|------|-------|------|-----|----|----|----|----|---|----|---|---|-------|
| St. Mary JV*           | 1-6  | 0-3   | 4-4  | 6   | 0  | 4  | 4  | 1  | 6 | 0  | 0 | 1 | 28:08 |
| Labette*               | 5-8  | 0-1   | 1-3  | 11  | 0  | 2  | 2  | 2  | 3 | 3  | 0 | 1 | 28:30 |
| Sterling JV*           | 1-4  | 0-2   | 1-2  | 3   | 0  | 2  | 2  | 1  | 9 | 1  | 0 | 4 | 22:24 |
| Fort Scott*            | 3-5  | 2-2   | 0-0  | 8   | 1  | 8  | 9  | 3  | 5 | 5  | 0 | 2 | 35:21 |
| Weatherford*           | 3-5  | 1-2   | 0-1  | 7   | 1  | 4  | 5  | 2  | 3 | 0  | 0 | 0 | 28:20 |
| Allen County*          | 2-3  | 0-1   | 0-0  | 4   | 0  | 4  | 4  | 4  | 2 | 3  | 0 | 1 | 20:37 |
| Clarendon              | DNP  |       |      |     |    |    |    |    |   |    |   |   |       |
| McCook                 | DNP  |       |      |     |    |    |    |    |   |    |   |   |       |
| Highland               | 1-5  | 1-3   | 0-2  | 3   | 0  | 5  | 5  | 3  | 6 | 1  | 1 | 1 | 27:59 |
| Allen County*          | 2-5  | 0-1   | 5-5  | 9   | 0  | 4  | 4  | 3  | 3 | 5  | 0 | 1 | 35:12 |
| Coffeyville*           | 1-6  | 0-3   | 0-0  | 2   | 0  | 2  | 2  | 4  | 1 | 3  | 0 | 1 | 27:50 |
| Kansas City*           | 5-7  | 2-3   | 1-3  | 13  | 0  | 1  | 1  | 1  | 4 | 3  | 0 | 0 | 28:26 |
| Central Nebraska       | 3-6  | 2-4   | 1-4  | 9   | 1  | 3  | 4  | 3  | 4 | 3  | 0 | 0 | 25:56 |
| Friends University JV* | 2-3  | 0-0   | 0-0  | 4   | 1  | 2  | 3  | 3  | 7 | 3  | 0 | 1 | 29:00 |
| Seward County*         | 0-2  | 0-2   | 4-4  | 4   | 0  | 0  | 0  | 2  | 1 | 1  | 0 | 0 | 17:22 |
| Dodge City*            | 2-4  | 1-2   | 0-0  | 5   | 0  | 3  | 3  | 0  | 2 | 2  | 0 | 0 | 21:18 |
| Garden City*           | 4-10 | 2-4   | 0-0  | 10  | 0  | 3  | 3  | 2  | 1 | 5  | 0 | 1 | 21:43 |
| Butler*                | 2-3  | 0-1   | 0-0  | 4   | 0  | 1  | 1  | 3  | 1 | 3  | 0 | 2 | 19:29 |
| Barton                 | 0-0  | 0-0   | 0-0  | 0   | 0  | 0  | 0  | 1  | 0 | 1  | 0 | 0 | 7:06  |
| Colby                  | 0-5  | 0-2   | 0-0  | 0   | 1  | 6  | 7  | 3  | 0 | 2  | 0 | 0 | 17:32 |
| Pratt                  | 3-5  | 0-0   | 0-0  | 6   | 1  | 5  | 6  | 2  | 3 | 5  | 0 | 1 | 31:39 |
| Cloud County*          | 1-2  | 1-1   | 4-6  | 7   | 0  | 3  | 3  | 2  | 2 | 1  | 0 | 0 | 36:35 |
| Seward County*         | 1-8  | 1-4   | 0-0  | 3   | 0  | 2  | 2  | 3  | 1 | 1  | 0 | 0 | 18:38 |
| Dodge City*            | 1-8  | 1-5   | 1-2  | 4   | 0  | 0  | 0  | 2  | 0 | 4  | 0 | 1 | 30:24 |
| Garden City            | 2-4  | 0-2   | 0-1  | 4   | 1  | 2  | 3  | 1  | 4 | 2  | 0 | 1 | 23:42 |
| Butler                 | 1-3  | 1-3   | 0-0  | 3   | 2  | 0  | 2  | 4  | 1 | 2  | 0 | 1 | 22:02 |
| Barton                 |      |       |      |     |    |    |    |    |   |    |   |   |       |
| Colby                  |      |       |      |     |    |    |    |    |   |    |   |   |       |
| Pratt                  |      |       |      |     |    |    |    |    |   |    |   |   |       |
| Cloud County           |      |       |      |     |    |    |    |    |   |    |   |   |       |

\* - Indicates Started Game

## 2008-09 Blue Dragon Player Season Recaps



### Javari Williams

Height - 6-3  
Year - Redshirt Freshman  
Position - Forward  
Hometown - Brampton, Ontario, Canada

#### Williams' Season Highs

|                     |  |
|---------------------|--|
| Points              | .....12 - 2 times (last vs. Dodge City)  |
| Field Goals         | .....5 - St. Mary JV                     |
| Field Goal Attempts | .....13 - 2 times (last vs. Coffeyville) |
| 3-Pointers          | .....0                                   |
| 3-Point Attempts    | .....1 - 4 times (last vs. Butler)       |
| Free Throws         | .....5 - Kansas City                     |
| Free-Throw Attempts | .....8 - 2 times (last vs. Dodge City)   |
| Rebounds            | .....7 - 2 times (last vs. Dodge City)   |
| Assists             | .....7 - Weatherford                     |
| Blocked Shots       | .....2 - 2 times (last vs. Butler)       |
| Steals              | .....5 - Sterling College JV             |
| Minutes Played      | .....37:56 - Coffeyville                 |

| Opponent              | FG-A      | 3Pt-A | FT-A | Pts | OR | DR | TR | PF | A | TO | B | S | Min   |
|-----------------------|-----------|-------|------|-----|----|----|----|----|---|----|---|---|-------|
| St. Mary JV           | .....5-13 | 0-1   | 0-2  | 10  | 4  | 3  | 7  | 1  | 0 | 4  | 0 | 1 | 20:20 |
| Labette               | .....3-7  | 0-0   | 0-4  | 6   | 4  | 2  | 6  | 1  | 1 | 0  | 0 | 0 | 17:21 |
| Sterling JV           | .....4-5  | 0-0   | 2-5  | 10  | 2  | 2  | 4  | 1  | 1 | 1  | 0 | 5 | 18:16 |
| Fort Scott            | .....DNP  |       |      |     |    |    |    |    |   |    |   |   |       |
| Weatherford           | .....4-4  | 0-0   | 4-8  | 12  | 1  | 4  | 5  | 4  | 7 | 2  | 0 | 1 | 25:20 |
| Allen County          | .....3-3  | 0-0   | 0-5  | 6   | 0  | 2  | 2  | 2  | 0 | 1  | 2 | 1 | 18:18 |
| Clarendon             | .....1-3  | 0-1   | 1-2  | 3   | 2  | 3  | 5  | 3  | 1 | 6  | 1 | 0 | 15:08 |
| McCook                | .....1-3  | 0-0   | 0-0  | 2   | 0  | 1  | 1  | 0  | 2 | 1  | 1 | 2 | 21:27 |
| Highland              | .....4-5  | 0-0   | 2-2  | 10  | 2  | 3  | 5  | 3  | 0 | 3  | 1 | 0 | 22:46 |
| Allen County          | .....1-5  | 0-1   | 2-4  | 4   | 1  | 3  | 4  | 2  | 1 | 1  | 0 | 1 | 23:13 |
| Coffeyville*          | .....4-13 | 0-2   | 1-2  | 9   | 7  | 6  | 13 | 3  | 5 | 1  | 1 | 2 | 37:56 |
| Kansas City*          | .....2-5  | 0-0   | 5-7  | 9   | 2  | 5  | 7  | 0  | 2 | 0  | 0 | 4 | 26:31 |
| Central Nebraska      | .....1-4  | 0-0   | 3-5  | 5   | 1  | 0  | 1  | 2  | 1 | 0  | 0 | 0 | 12:47 |
| Friends University JV | .....1-2  | 0-0   | 0-0  | 2   | 0  | 0  | 0  | 0  | 0 | 0  | 0 | 0 | 2:26  |
| Seward County         | .....1-2  | 0-0   | 1-2  | 3   | 1  | 4  | 5  | 0  | 0 | 1  | 0 | 3 | 12:52 |
| Dodge City*           | .....0-0  | 0-0   | 1-2  | 1   | 1  | 2  | 3  | 2  | 1 | 1  | 0 | 1 | 21:58 |
| Garden City           | .....2-2  | 0-0   | 0-6  | 4   | 3  | 1  | 4  | 2  | 1 | 0  | 0 | 0 | 13:40 |
| Butler                | .....0-1  | 0-1   | 1-4  | 1   | 1  | 0  | 1  | 0  | 1 | 1  | 0 | 1 | 13:48 |
| Barton                | .....1-2  | 0-0   | 1-2  | 3   | 0  | 2  | 2  | 0  | 0 | 0  | 1 | 0 | 18:09 |
| Colby                 | .....0-3  | 0-0   | 3-4  | 3   | 2  | 1  | 3  | 3  | 1 | 4  | 0 | 3 | 23:49 |
| Pratt                 | .....0-0  | 0-0   | 1-2  | 1   | 0  | 1  | 1  | 1  | 0 | 0  | 0 | 0 | 7:55  |
| Cloud County          | .....2-3  | 0-0   | 2-2  | 6   | 1  | 1  | 2  | 1  | 1 | 2  | 1 | 2 | 36:35 |
| Seward County         | .....1-2  | 0-1   | 1-5  | 3   | 1  | 4  | 5  | 4  | 0 | 1  | 0 | 2 | 29:00 |
| Dodge City            | .....4-6  | 0-0   | 4-8  | 12  | 5  | 2  | 7  | 4  | 2 | 2  | 0 | 4 | 31:34 |
| Garden City*          | .....1-2  | 0-0   | 2-2  | 4   | 4  | 0  | 4  | 1  | 3 | 2  | 0 | 0 | 23:14 |
| Butler*               | .....1-1  | 0-0   | 0-0  | 2   | 0  | 2  | 2  | 4  | 0 | 2  | 2 | 2 | 26:38 |
| Barton                |           |       |      |     |    |    |    |    |   |    |   |   |       |
| Colby                 |           |       |      |     |    |    |    |    |   |    |   |   |       |
| Pratt                 |           |       |      |     |    |    |    |    |   |    |   |   |       |
| Cloud County          |           |       |      |     |    |    |    |    |   |    |   |   |       |

\* - Indicates Started Game



### Tom Shirley

Height - 6-8  
Year - Freshman  
Position - Forward  
Hometown - Grantville, KS

#### Shirley's Season Highs

|                     |   |
|---------------------|---|
| Points              | .....19 - Weatherford                     |
| Field Goals         | .....8 - Weatherford                      |
| Field Goal Attempts | .....10 - 2 times (last vs. Cloud County) |
| 3-Pointers          | .....4 - Allen County                     |
| 3-Point Attempts    | .....5 - Cloud County                     |
| Free Throws         | .....5 - McCook                           |
| Free-Throw Attempts | .....8 - McCook                           |
| Rebounds            | .....12 - Labette                         |
| Assists             | .....4 - Friends University JV            |
| Blocked Shots       | .....3 - 2 times (Sterling College JV)    |
| Steals              | .....2 - 5 times (last vs. Barton)        |
| Minutes Played      | .....34:05 - Barton                       |

| Opponent              | FG-A      | 3Pt-A | FT-A | Pts | OR | DR | TR | PF | A | TO | B | S | Min   |
|-----------------------|-----------|-------|------|-----|----|----|----|----|---|----|---|---|-------|
| St. Mary JV*          | .....2-3  | 0-0   | 4-4  | 8   | 1  | 5  | 6  | 2  | 2 | 1  | 3 | 2 | 21:24 |
| Labette*              | .....3-5  | 0-0   | 1-2  | 7   | 6  | 6  | 12 | 3  | 2 | 1  | 0 | 2 | 24:55 |
| Sterling JV*          | .....2-3  | 0-0   | 1-4  | 5   | 3  | 6  | 9  | 2  | 1 | 2  | 3 | 0 | 22:43 |
| Fort Scott*           | .....0-3  | 0-0   | 0-0  | 0   | 1  | 4  | 5  | 3  | 1 | 0  | 0 | 1 | 20:44 |
| Weatherford*          | .....8-10 | 1-1   | 2-3  | 19  | 2  | 3  | 5  | 1  | 2 | 2  | 2 | 0 | 26:04 |
| Allen County*         | .....5-7  | 4-4   | 0-1  | 14  | 0  | 1  | 1  | 2  | 0 | 2  | 1 | 0 | 23:18 |
| Clarendon*            | .....3-5  | 0-0   | 2-2  | 8   | 2  | 7  | 9  | 4  | 1 | 2  | 1 | 0 | 33:35 |
| McCook*               | .....3-6  | 0-2   | 5-8  | 11  | 4  | 3  | 7  | 4  | 0 | 2  | 1 | 0 | 21:19 |
| Highland*             | .....1-3  | 0-1   | 2-3  | 4   | 2  | 0  | 2  | 3  | 1 | 0  | 0 | 0 | 19:07 |
| Allen County*         | .....1-4  | 0-2   | 1-2  | 3   | 0  | 1  | 1  | 4  | 2 | 0  | 1 | 0 | 24:12 |
| Coffeyville*          | .....3-9  | 1-4   | 4-4  | 11  | 5  | 2  | 7  | 4  | 1 | 2  | 0 | 0 | 26:38 |
| Kansas City*          | .....2-8  | 1-2   | 0-0  | 5   | 1  | 3  | 4  | 1  | 2 | 1  | 1 | 1 | 27:56 |
| Central Nebraska*     | .....6-8  | 2-3   | 2-2  | 16  | 2  | 5  | 7  | 0  | 2 | 1  | 1 | 1 | 25:07 |
| Friends University JV | .....3-7  | 2-5   | 3-4  | 11  | 0  | 5  | 5  | 0  | 4 | 0  | 1 | 2 | 26:44 |
| Seward County*        | .....1-3  | 1-2   | 2-2  | 5   | 0  | 7  | 7  | 4  | 1 | 2  | 1 | 0 | 28:09 |
| Dodge City*           | .....3-3  | 1-1   | 2-2  | 9   | 1  | 3  | 4  | 3  | 0 | 0  | 0 | 1 | 28:03 |
| Garden City*          | .....2-5  | 1-2   | 2-2  | 7   | 3  | 1  | 4  | 4  | 2 | 3  | 0 | 2 | 21:13 |
| Butler*               | .....1-3  | 1-2   | 0-0  | 3   | 2  | 2  | 4  | 2  | 2 | 3  | 1 | 0 | 13:45 |
| Barton*               | .....6-12 | 1-4   | 0-0  | 13  | 0  | 8  | 8  | 2  | 0 | 1  | 0 | 2 | 34:05 |
| Colby*                | .....1-7  | 1-3   | 0-0  | 3   | 1  | 2  | 3  | 1  | 3 | 1  | 1 | 0 | 15:17 |
| Pratt                 | .....2-4  | 0-1   | 1-2  | 5   | 2  | 3  | 5  | 5  | 1 | 1  | 0 | 1 | 24:42 |
| Cloud County*         | .....4-10 | 2-5   | 0-1  | 10  | 0  | 2  | 2  | 3  | 2 | 0  | 1 | 1 | 26:01 |
| Seward County*        | .....1-5  | 0-3   | 0-0  | 2   | 0  | 1  | 1  | 2  | 1 | 4  | 0 | 0 | 15:48 |
| Dodge City            | .....DNP  |       |      |     |    |    |    |    |   |    |   |   |       |
| Garden City           | .....3-9  | 1-5   | 0-0  | 7   | 1  | 5  | 6  | 4  | 1 | 0  | 0 | 1 | 24:09 |
| Butler                | .....2-5  | 1-2   | 0-0  | 5   | 2  | 1  | 3  | 1  | 0 | 0  | 0 | 0 | 16:17 |
| Barton                |           |       |      |     |    |    |    |    |   |    |   |   |       |
| Colby                 |           |       |      |     |    |    |    |    |   |    |   |   |       |
| Pratt                 |           |       |      |     |    |    |    |    |   |    |   |   |       |
| Cloud County          |           |       |      |     |    |    |    |    |   |    |   |   |       |

\* - Indicates Started Game

## 2008-09 Blue Dragon Player Season Recaps



### Cody Beaton

Height - 6-3  
Year - Freshman  
Position - Guard  
Hometown - Hutchinson, KS

#### Beaton's Season Highs

|                     |                                   |
|---------------------|-----------------------------------|
| Points              | 14 - Friends JV                   |
| Field Goals         | 4 - Friends JV                    |
| Field Goal Attempts | 4 - Friends JV                    |
| 3-Pointers          | 4 - Friends JV                    |
| 3-Point Attempts    | 4 - 2 times (last vs. Friends JV) |
| Free Throws         | 2 - Friends JV                    |
| Free-Throw Attempts | 2 - 3 times (last vs. Friends JV) |
| Rebounds            | 2 - Labette                       |
| Assists             | 3 - Labette                       |
| Blocked Shots       | 0                                 |
| Steals              | 0                                 |
| Minutes Played      | 11:50 - Kansas City               |

| Opponent              | FG-A | 3Pt-A | FT-A | Pts | OR | DR | TR | PF | A | TO | B | S | Min   |
|-----------------------|------|-------|------|-----|----|----|----|----|---|----|---|---|-------|
| St. Mary JV           | 1-1  | 1-4   | 0-0  | 3   | 0  | 0  | 0  | 0  | 0 | 0  | 0 | 0 | 8:58  |
| Labette               | 0-1  | 0-1   | 1-2  | 1   | 1  | 1  | 2  | 0  | 3 | 0  | 0 | 0 | 7:54  |
| Sterling JV           | 1-2  | 1-2   | 0-0  | 3   | 0  | 0  | 0  | 0  | 1 | 2  | 0 | 0 | 10:18 |
| Fort Scott            | 2-2  | 0-0   | 0-0  | 4   | 0  | 0  | 0  | 0  | 0 | 0  | 0 | 0 | 2:16  |
| Weatherford           | 0-1  | 0-0   | 0-0  | 0   | 1  | 0  | 1  | 1  | 0 | 0  | 0 | 0 | 2:03  |
| Allen County          | 0-0  | 0-0   | 0-2  | 0   | 0  | 0  | 0  | 0  | 0 | 0  | 0 | 0 | 2:25  |
| Clarendon             | DNP  |       |      |     |    |    |    |    |   |    |   |   |       |
| McCook                | DNP  |       |      |     |    |    |    |    |   |    |   |   |       |
| Highland              | DNP  |       |      |     |    |    |    |    |   |    |   |   |       |
| Allen County          | DNP  |       |      |     |    |    |    |    |   |    |   |   |       |
| Coffeyville           | DNP  |       |      |     |    |    |    |    |   |    |   |   |       |
| Kansas City           | 0-1  | 0-0   | 0-0  | 0   | 1  | 0  | 1  | 1  | 2 | 2  | 0 | 0 | 11:50 |
| Central Nebraska      | 2-3  | 2-3   | 0-0  | 6   | 0  | 1  | 1  | 0  | 0 | 0  | 0 | 0 | 5:52  |
| Friends University JV | 4-4  | 4-4   | 2-2  | 14  | 0  | 1  | 1  | 0  | 1 | 0  | 0 | 0 | 8:15  |
| Seward County         | DNP  |       |      |     |    |    |    |    |   |    |   |   |       |
| Dodge City            | DNP  |       |      |     |    |    |    |    |   |    |   |   |       |
| Garden City           | DNP  |       |      |     |    |    |    |    |   |    |   |   |       |
| Butler                | 0-0  | 0-0   | 0-0  | 0   | 0  | 0  | 0  | 0  | 0 | 0  | 0 | 0 | 1:23  |
| Barton                | DNP  |       |      |     |    |    |    |    |   |    |   |   |       |
| Colby                 | 1-3  | 1-3   | 0-0  | 3   | 0  | 1  | 1  | 1  | 0 | 0  | 0 | 0 | 7:26  |
| Pratt                 | 0-0  | 0-0   | 0-0  | 0   | 0  | 0  | 0  | 0  | 0 | 0  | 0 | 0 | 0:32  |
| Cloud County          | 0-0  | 0-0   | 0-0  | 0   | 0  | 0  | 0  | 1  | 0 | 0  | 0 | 0 | 3:19  |
| Seward County         | 0-0  | 0-0   | 0-0  | 0   | 0  | 1  | 1  | 0  | 0 | 0  | 0 | 0 | 1:56  |
| Dodge City            | 0-1  | 0-1   | 0-1  | 0   | 0  | 1  | 1  | 0  | 1 | 0  | 0 | 0 | 2:32  |
| Garden City           | 0-0  | 0-0   | 0-0  | 0   | 0  | 0  | 0  | 0  | 0 | 0  | 0 | 0 | 0:02  |
| Butler                | DNP  |       |      |     |    |    |    |    |   |    |   |   |       |
| Barton                |      |       |      |     |    |    |    |    |   |    |   |   |       |
| Colby                 |      |       |      |     |    |    |    |    |   |    |   |   |       |
| Pratt                 |      |       |      |     |    |    |    |    |   |    |   |   |       |
| Cloud County          |      |       |      |     |    |    |    |    |   |    |   |   |       |

\* - Indicates Started Game



### Chris Banks

Height - 6-2  
Year - Sophomore  
Position - Guard  
Hometown - Fort Scott, KS

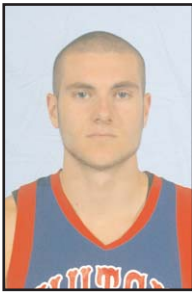
#### Banks' Season Highs

|                     |                                   |
|---------------------|-----------------------------------|
| Points              | 4 - 4 times (last vs. Dodge City) |
| Field Goals         | 2 - 3 times (last vs. Colby)      |
| Field Goal Attempts | 4 - Friends JV                    |
| 3-Pointers          | 0                                 |
| 3-Point Attempts    | 2 - Kansas City                   |
| Free Throws         | 2 - Dodge City                    |
| Free-Throw Attempts | 3 - Dodge City                    |
| Rebounds            | 5 - Kansas City                   |
| Assists             | 3 - Colby                         |
| Blocked Shots       | 0                                 |
| Steals              | 4 - Friends JV                    |
| Minutes Played      | 25:58 - Garden City               |

| Opponent               | FG-A | 3Pt-A | FT-A | Pts | OR | DR | TR | PF | A | TO | B | S | Min   |
|------------------------|------|-------|------|-----|----|----|----|----|---|----|---|---|-------|
| St. Mary JV            | DNP  |       |      |     |    |    |    |    |   |    |   |   |       |
| Labette                | DNP  |       |      |     |    |    |    |    |   |    |   |   |       |
| Sterling JV            | DNP  |       |      |     |    |    |    |    |   |    |   |   |       |
| Fort Scott             | DNP  |       |      |     |    |    |    |    |   |    |   |   |       |
| Weatherford            | DNP  |       |      |     |    |    |    |    |   |    |   |   |       |
| Allen County           | DNP  |       |      |     |    |    |    |    |   |    |   |   |       |
| Clarendon              | DNP  |       |      |     |    |    |    |    |   |    |   |   |       |
| McCook                 | DNP  |       |      |     |    |    |    |    |   |    |   |   |       |
| Highland               | 0-0  | 0-0   | 0-0  | 0   | 0  | 0  | 0  | 0  | 0 | 0  | 0 | 0 | 4:26  |
| Allen County           | 0-0  | 0-0   | 0-0  | 0   | 0  | 1  | 1  | 0  | 1 | 2  | 0 | 0 | 9:51  |
| Coffeyville            | 0-0  | 0-0   | 0-0  | 0   | 0  | 0  | 0  | 1  | 0 | 0  | 0 | 0 | 4:42  |
| Kansas City            | 1-3  | 0-0   | 1-2  | 3   | 2  | 3  | 5  | 2  | 0 | 0  | 0 | 0 | 17:13 |
| Central Nebraska*      | 2-2  | 0-0   | 0-0  | 4   | 0  | 2  | 2  | 0  | 0 | 1  | 0 | 2 | 25:45 |
| Friends University JV* | 2-4  | 0-0   | 0-1  | 4   | 0  | 1  | 1  | 0  | 2 | 0  | 0 | 4 | 20:04 |
| Seward County*         | 0-2  | 0-1   | 0-0  | 0   | 1  | 0  | 1  | 2  | 2 | 1  | 0 | 1 | 22:24 |
| Dodge City             | 0-0  | 0-0   | 0-0  | 0   | 1  | 0  | 1  | 1  | 1 | 1  | 0 | 0 | 17:29 |
| Garden City*           | 0-0  | 0-0   | 1-2  | 1   | 0  | 4  | 4  | 3  | 2 | 0  | 0 | 0 | 25:58 |
| Butler*                | 0-0  | 0-0   | 2-2  | 2   | 0  | 1  | 1  | 2  | 2 | 1  | 0 | 0 | 18:05 |
| Barton*                | 0-0  | 0-0   | 0-0  | 0   | 0  | 1  | 1  | 2  | 3 | 2  | 0 | 0 | 22:13 |
| Colby                  | 2-2  | 0-0   | 0-1  | 4   | 0  | 3  | 3  | 5  | 3 | 3  | 0 | 2 | 24:09 |
| Pratt*                 | 0-0  | 0-0   | 0-0  | 0   | 1  | 2  | 3  | 1  | 0 | 1  | 0 | 1 | 15:05 |
| Cloud County*          | 1-2  | 0-0   | 0-1  | 2   | 0  | 2  | 2  | 1  | 1 | 1  | 0 | 0 | 19:52 |
| Seward County*         | 0-0  | 0-0   | 0-0  | 0   | 0  | 1  | 1  | 0  | 1 | 2  | 0 | 1 | 19:13 |
| Dodge City*            | 1-2  | 0-1   | 2-4  | 4   | 0  | 0  | 0  | 2  | 0 | 1  | 0 | 1 | 18:55 |
| Garden City*           | 0-0  | 0-0   | 0-0  | 0   | 1  | 0  | 1  | 1  | 3 | 0  | 0 | 0 | 21:33 |
| Butler*                | 0-1  | 0-1   | 0-0  | 0   | 0  | 2  | 2  | 4  | 2 | 1  | 0 | 0 | 21:40 |
| Barton                 |      |       |      |     |    |    |    |    |   |    |   |   |       |
| Colby                  |      |       |      |     |    |    |    |    |   |    |   |   |       |
| Pratt                  |      |       |      |     |    |    |    |    |   |    |   |   |       |
| Cloud County           |      |       |      |     |    |    |    |    |   |    |   |   |       |

\* - Indicates Started Game

## 2008-09 Blue Dragon Player Season Recaps



### Austin Bond

Height - 6-5  
Year - Sophomore  
Position - Guard  
Hometown - Kansas City, KS

#### Bond's Season Highs

|                     |   |
|---------------------|---|
| Points              | 12 - Friends JV                           |
| Field Goals         | 4 - Friends JV                            |
| Field Goal Attempts | 6 - St. Mary JV                           |
| 3-Pointers          | 2 - 3 times (last vs. Friends JV)         |
| 3-Point Attempts    | 4 - 2 times (last vs. Highland)           |
| Free Throws         | 6 - Clarendon                             |
| Free-Throw Attempts | 6 - Clarendon                             |
| Rebounds            | 6 - St. Mary JV (1 times last vs. McCook) |
| Assists             | 4 - 2 times (last vs. Garden City)        |
| Blocked Shots       | 5 - Barton                                |
| Steals              | 3 - Garden City                           |
| Minutes Played      | 30:33 - McCook                            |

| Opponent              | FG-A | 3Pt-A | FT-A | Pts | OR | DR | TR | PF | A | TO | B | S | Min   |
|-----------------------|------|-------|------|-----|----|----|----|----|---|----|---|---|-------|
| St. Mary JV           | 2-6  | 1-4   | 0-0  | 5   | 2  | 4  | 6  | 2  | 4 | 1  | 0 | 2 | 21:34 |
| Labette               | 2-4  | 1-3   | 2-3  | 7   | 1  | 0  | 1  | 1  | 1 | 1  | 1 | 1 | 13:25 |
| Sterling JV           | 3-4  | 2-3   | 1-2  | 9   | 0  | 2  | 2  | 2  | 1 | 0  | 3 | 2 | 19:51 |
| Fort Scott            | 3-5  | 1-3   | 0-0  | 7   | 0  | 1  | 1  | 1  | 1 | 3  | 0 | 1 | 17:51 |
| Weatherford           | 1-4  | 0-3   | 1-2  | 3   | 0  | 1  | 1  | 3  | 2 | 2  | 0 | 1 | 13:55 |
| Allen County          | 0-3  | 0-1   | 0-0  | 0   | 1  | 3  | 4  | 1  | 0 | 1  | 0 | 1 | 24:17 |
| Clarendon*            | 2-3  | 0-0   | 6-6  | 10  | 0  | 4  | 4  | 2  | 0 | 2  | 1 | 1 | 29:16 |
| McCook*               | 1-3  | 0-2   | 0-0  | 2   | 2  | 4  | 6  | 1  | 5 | 1  | 2 | 1 | 30:33 |
| Highland*             | 2-5  | 2-4   | 0-0  | 6   | 0  | 0  | 0  | 2  | 3 | 0  | 0 | 0 | 28:32 |
| Allen County          | DNP  |       |      |     |    |    |    |    |   |    |   |   |       |
| Coffeyville           | 2-4  | 2-4   | 0-0  | 6   | 0  | 0  | 0  | 2  | 2 | 0  | 1 | 0 | 20:43 |
| Kansas City           | 0-1  | 0-1   | 0-0  | 0   | 0  | 0  | 0  | 0  | 0 | 2  | 0 | 0 | 18:49 |
| Central Nebraska      | 0-4  | 0-2   | 0-0  | 0   | 0  | 1  | 1  | 3  | 3 | 0  | 0 | 1 | 17:59 |
| Friends University JV | 4-5  | 2-2   | 2-2  | 12  | 0  | 2  | 2  | 0  | 0 | 2  | 0 | 2 | 21:55 |
| Seward County         | 0-0  | 0-0   | 0-0  | 0   | 0  | 0  | 0  | 0  | 0 | 1  | 0 | 0 | 7:36  |
| Dodge City            | 1-1  | 1-1   | 0-0  | 3   | 0  | 1  | 1  | 2  | 0 | 1  | 0 | 0 | 9:36  |
| Garden City           | 0-0  | 0-0   | 0-0  | 0   | 0  | 0  | 0  | 0  | 0 | 0  | 0 | 0 | 4:00  |
| Butler                | 0-1  | 0-1   | 0-0  | 0   | 0  | 0  | 0  | 0  | 0 | 0  | 1 | 0 | 8:46  |
| Barton                | 1-5  | 1-3   | 4-4  | 7   | 0  | 3  | 3  | 2  | 1 | 1  | 5 | 1 | 19:20 |
| Colby                 | 0-4  | 0-4   | 0-0  | 0   | 0  | 0  | 0  | 1  | 1 | 1  | 2 | 1 | 13:16 |
| Pratt                 | 0-2  | 0-2   | 0-0  | 0   | 0  | 1  | 1  | 3  | 0 | 0  | 0 | 0 | 6:50  |
| Cloud County          | 1-3  | 0-2   | 0-0  | 2   | 0  | 3  | 3  | 2  | 1 | 1  | 0 | 0 | 25:13 |
| Seward County         | 1-2  | 1-2   | 0-0  | 3   | 0  | 0  | 0  | 0  | 2 | 2  | 0 | 0 | 13:02 |
| Dodge City            | 1-5  | 1-4   | 0-0  | 3   | 1  | 1  | 2  | 3  | 1 | 2  | 1 | 1 | 20:09 |
| Garden City           | 1-4  | 1-2   | 0-0  | 3   | 0  | 0  | 0  | 1  | 4 | 1  | 0 | 3 | 21:37 |
| Butler                | 0-1  | 0-1   | 0-0  | 0   | 0  | 0  | 0  | 1  | 2 | 1  | 0 | 0 | 16:53 |
| Barton                |      |       |      |     |    |    |    |    |   |    |   |   |       |
| Colby                 |      |       |      |     |    |    |    |    |   |    |   |   |       |
| Pratt                 |      |       |      |     |    |    |    |    |   |    |   |   |       |
| Cloud County          |      |       |      |     |    |    |    |    |   |    |   |   |       |

\* - Indicates Started Game



### Dominique Rutledge

Height - 6-8  
Year - Freshman  
Position - Forward  
Hometown - Newark, N.J.

#### Rutledge's Season Highs

|                     |                                      |
|---------------------|--------------------------------------|
| Points              | 22 - Central Nebraska                |
| Field Goals         | 10 - Central Nebraska                |
| Field Goal Attempts | 18 - Central Nebraska                |
| 3-Pointers          | 0                                    |
| 3-Point Attempts    | 0                                    |
| Free Throws         | 5 - 2 times (last vs. Cloud County)  |
| Free-Throw Attempts | 12 - Cloud County                    |
| Rebounds            | 13 - 2 times (last vs. Cloud County) |
| Assists             | 3 - Pratt                            |
| Blocked Shots       | 4 - 3 times (last vs. Pratt)         |
| Steals              | 3 - 3 times (last vs. Butler)        |
| Minutes Played      | 32:31 - Pratt                        |

| Opponent               | FG-A  | 3Pt-A | FT-A | Pts | OR | DR | TR | PF | A | TO | B | S | Min   |
|------------------------|-------|-------|------|-----|----|----|----|----|---|----|---|---|-------|
| St. Mary JV            | DNP   |       |      |     |    |    |    |    |   |    |   |   |       |
| Labette                | DNP   |       |      |     |    |    |    |    |   |    |   |   |       |
| Sterling JV            | 5-9   | 0-0   | 0-2  | 10  | 4  | 2  | 6  | 3  | 0 | 2  | 0 | 2 | 16:36 |
| Fort Scott             | 4-7   | 0-0   | 0-2  | 8   | 4  | 3  | 7  | 0  | 2 | 1  | 1 | 0 | 21:48 |
| Weatherford            | 4-9   | 0-0   | 0-0  | 8   | 2  | 6  | 8  | 3  | 1 | 0  | 1 | 0 | 9:47  |
| Allen County           | 0-4   | 0-0   | 2-4  | 2   | 1  | 5  | 6  | 2  | 1 | 3  | 0 | 3 | 19:27 |
| Clarendon              | 3-4   | 0-0   | 2-2  | 8   | 3  | 4  | 7  | 2  | 0 | 2  | 3 | 1 | 15:11 |
| McCook                 | 1-3   | 0-2   | 0-0  | 2   | 1  | 3  | 4  | 2  | 0 | 2  | 0 | 0 | 14:17 |
| Highland               | 3-9   | 0-0   | 3-6  | 9   | 4  | 2  | 6  | 3  | 2 | 1  | 1 | 0 | 21:33 |
| Allen County*          | 0-3   | 0-0   | 1-3  | 1   | 3  | 3  | 6  | 2  | 0 | 5  | 4 | 0 | 23:21 |
| Coffeyville*           | 4-9   | 0-0   | 2-6  | 10  | 6  | 4  | 10 | 3  | 2 | 5  | 2 | 0 | 30:53 |
| Kansas City*           | 7-14  | 0-0   | 0-1  | 14  | 4  | 6  | 10 | 4  | 1 | 3  | 4 | 1 | 25:39 |
| Central Nebraska*      | 10-18 | 0-0   | 2-4  | 22  | 3  | 6  | 9  | 4  | 1 | 3  | 2 | 3 | 24:21 |
| Friends University JV* | 4-11  | 0-0   | 2-4  | 10  | 6  | 3  | 9  | 3  | 0 | 3  | 1 | 1 | 19:08 |
| Seward County*         | 5-9   | 0-0   | 5-9  | 15  | 7  | 6  | 13 | 3  | 0 | 4  | 0 | 1 | 24:21 |
| Dodge City*            | 9-13  | 0-0   | 1-3  | 19  | 0  | 5  | 5  | 2  | 0 | 4  | 0 | 1 | 24:36 |
| Garden City*           | 5-10  | 0-0   | 2-8  | 12  | 3  | 3  | 6  | 1  | 0 | 1  | 0 | 1 | 25:12 |
| Butler*                | 3-8   | 0-1   | 1-2  | 7   | 3  | 4  | 7  | 3  | 0 | 3  | 2 | 1 | 30:10 |
| Barton*                | 6-10  | 0-0   | 0-1  | 12  | 4  | 6  | 10 | 4  | 0 | 5  | 2 | 1 | 15:48 |
| Colby*                 | 1-4   | 0-0   | 1-2  | 3   | 2  | 1  | 3  | 0  | 1 | 2  | 0 | 0 | 18:08 |
| Pratt*                 | 3-7   | 0-0   | 4-9  | 10  | 6  | 8  | 14 | 2  | 3 | 4  | 4 | 1 | 32:31 |
| Cloud County*          | 2-5   | 0-0   | 5-12 | 9   | 2  | 11 | 13 | 1  | 0 | 5  | 2 | 0 | 26:59 |
| Seward County*         | 2-4   | 0-0   | 2-7  | 6   | 6  | 3  | 9  | 3  | 0 | 2  | 2 | 2 | 27:07 |
| Dodge City*            | 0-3   | 0-0   | 2-4  | 2   | 3  | 1  | 4  | 2  | 1 | 3  | 1 | 2 | 20:21 |
| Garden City*           | 3-5   | 0-0   | 1-5  | 7   | 1  | 3  | 4  | 2  | 0 | 1  | 1 | 0 | 21:49 |
| Butler*                | 0-7   | 0-0   | 1-2  | 1   | 0  | 6  | 6  | 3  | 1 | 3  | 2 | 3 | 20:41 |
| Barton                 |       |       |      |     |    |    |    |    |   |    |   |   |       |
| Colby                  |       |       |      |     |    |    |    |    |   |    |   |   |       |
| Pratt                  |       |       |      |     |    |    |    |    |   |    |   |   |       |
| Cloud County           |       |       |      |     |    |    |    |    |   |    |   |   |       |

\* - Indicates Started Game

## 2008-09 Blue Dragon Player Season Recaps



### Ryan Douvier

Height - 6-5  
 Year - Sophomore  
 Position - Forward  
 Hometown - Newton, KS

#### Douvier's Season Highs

Points .....6 - 3 times (last vs. Seward County)  
 Field Goals .....3 - Seward County  
 Field Goal Attempts .....6 - St. Mary JV  
 3-Pointers .....0  
 3-Point Attempts .....2 - Labette  
 Free Throws .....3 - Allen County  
 Free-Throw Attempts.....4 - Allen County  
 Rebounds .....10 - St. Mary JV  
 Assists .....4 - Sterling College JV  
 Blocked Shots .....2 - Butler  
 Steals .....2 - 4 times (last vs. Butler)  
 Minutes Played .....24:06 - St. Mary JV

| Opponent              | FG-A | 3PI-A | FT-A | Pts | OR | DR | TR | PF | A | TO | B | S | Min   |
|-----------------------|------|-------|------|-----|----|----|----|----|---|----|---|---|-------|
| St. Mary JV*          | 2-6  | 0-1   | 2-2  | 6   | 3  | 7  | 10 | 4  | 0 | 1  | 0 | 2 | 24:06 |
| Labette*              | 0-2  | 0-2   | 0-0  | 0   | 1  | 2  | 3  | 4  | 2 | 0  | 1 | 0 | 11:24 |
| Sterling JV           | 2-5  | 0-1   | 2-2  | 6   | 3  | 5  | 8  | 2  | 4 | 1  | 0 | 0 | 20:32 |
| Fort Scott            | 1-3  | 0-0   | 0-0  | 2   | 1  | 2  | 3  | 4  | 2 | 1  | 0 | 0 | 13:42 |
| Weatherford           | 1-2  | 0-0   | 0-0  | 2   | 0  | 1  | 1  | 4  | 0 | 0  | 0 | 0 | 6:21  |
| Allen County          | 0-1  | 0-0   | 3-4  | 3   | 3  | 1  | 4  | 3  | 0 | 1  | 0 | 2 | 8:29  |
| Clarendon             | 0-0  | 0-0   | 0-0  | 0   | 0  | 1  | 1  | 2  | 0 | 1  | 0 | 1 | 3:50  |
| McCook                | 0-1  | 0-1   | 2-2  | 2   | 1  | 2  | 3  | 1  | 0 | 0  | 0 | 0 | 9:52  |
| Highland*             | 1-1  | 0-0   | 2-2  | 4   | 2  | 3  | 5  | 1  | 1 | 1  | 1 | 0 | 10:28 |
| Allen County          | 0-1  | 0-1   | 0-0  | 0   | 0  | 2  | 2  | 3  | 0 | 0  | 0 | 1 | 14:11 |
| Coffeyville           | 1-1  | 0-0   | 0-0  | 2   | 1  | 1  | 2  | 4  | 1 | 0  | 0 | 1 | 12:28 |
| Kansas City           | 1-3  | 0-0   | 0-0  | 2   | 1  | 4  | 5  | 5  | 0 | 2  | 0 | 2 | 11:44 |
| Central Nebraska      | 0-3  | 0-0   | 0-0  | 0   | 0  | 5  | 5  | 2  | 3 | 1  | 1 | 0 | 15:24 |
| Friends University JV | 0-2  | 0-0   | 0-0  | 0   | 1  | 1  | 2  | 3  | 0 | 1  | 0 | 2 | 10:54 |
| Seward County         | DNP  |       |      |     |    |    |    |    |   |    |   |   |       |
| Dodge City            | 1-2  | 0-0   | 0-0  | 2   | 1  | 0  | 1  | 2  | 1 | 0  | 0 | 0 | 5:29  |
| Garden City           | DNP  |       |      |     |    |    |    |    |   |    |   |   |       |
| Butler                | 2-4  | 0-0   | 0-0  | 4   | 1  | 2  | 3  | 4  | 2 | 2  | 2 | 2 | 12:21 |
| Barton                | DNP  |       |      |     |    |    |    |    |   |    |   |   |       |
| Colby                 | 0-1  | 0-0   | 0-0  | 0   | 0  | 1  | 1  | 0  | 1 | 0  | 0 | 0 | 6:41  |
| Pratt                 | 0-0  | 0-0   | 0-0  | 0   | 0  | 0  | 0  | 0  | 0 | 0  | 0 | 0 | 0:32  |
| Cloud County          | 0-1  | 0-0   | 0-0  | 0   | 0  | 0  | 0  | 1  | 0 | 1  | 0 | 1 | 3:35  |
| Seward County         | 3-3  | 0-0   | 0-1  | 6   | 1  | 2  | 3  | 2  | 3 | 1  | 0 | 0 | 9:12  |
| Dodge City            | 0-0  | 0-0   | 0-0  | 0   | 1  | 0  | 1  | 4  | 0 | 0  | 0 | 0 | 7:19  |
| Garden City           | 0-0  | 0-0   | 0-0  | 0   | 0  | 1  | 1  | 0  | 0 | 0  | 0 | 0 | 2:45  |
| Butler                | 1-1  | 0-0   | 0-0  | 2   | 0  | 0  | 0  | 0  | 0 | 0  | 0 | 0 | 2:33  |
| Barton                |      |       |      |     |    |    |    |    |   |    |   |   |       |
| Colby                 |      |       |      |     |    |    |    |    |   |    |   |   |       |
| Pratt                 |      |       |      |     |    |    |    |    |   |    |   |   |       |
| Cloud County          |      |       |      |     |    |    |    |    |   |    |   |   |       |

\* - Indicates Started Game