

# Hutchinson Community College

# BLUE DRAGONS

## 2008-09 Men's Basketball Game Notes

Blue Dragon Media Relations - (620) 664-3593  
Media Contact - Steve Carpenter, Sports Information Director

Release Date - February 10, 2009  
Athletic web site - [www.hutchcc.edu/dragons](http://www.hutchcc.edu/dragons)

### GAME 26 - JAYHAWK WEST GAME 12



### Hutchinson Blue Dragons (16-9 5-6) vs. Butler Grizzlies (18-6, 7-3)

Date: Wednesday, February 11, 2009

Tipoff: 7:30 p.m.

Site: Hutchinson Sports Arena (Capacity, 7,000), Hutchinson, Kan.

Radio: KHUT-FM (102.9), 7:20 p.m. airtime

Internet: [www.hutchcc.edu/dragons](http://www.hutchcc.edu/dragons) (live radio, stats)



### BLUE DRAGONS SEEK REVENGE AGAINST GRIZZLIES AND SNAP FOUR-GAME LOSING STREAK

The Hutchinson Community College men's basketball team looks to snap a skid that started with their opponent on Wednesday night in the Sports Arena.

Before Hutchinson and Butler met on Jan. 14 in El Dorado, the Blue Dragons were 14-3 and 2-0 in the Jayhawk West. Butler pounded the Blue Dragons 86-60 on Jan. 14 and the Blue Dragons have gone just 2-6 since, losing four-straight games.

Tipoff for the 169th renewal of the Blue Dragons' oldest rival will be at 7:30 p.m. on Wednesday at the Sports Arena. The game will be broadcast on Blue Dragon flagship station KHUT-FM (102.9) and on sister station KWBW-AM (1450) at 7:20 p.m. with Glen Grunwald (play-by-play) and Rusty Hilst (analysis) calling the action. The game can also be heard on the internet on the Blue Dragon Sports Network.

Hutchinson's four-game losing streak is the first since early in the 1977-78 season

#### SERIES HISTORY VS. BUTLER

Record - 112-56  
In Hutchinson - HCC leads 59-19  
At Sports Arena - HCC leads 44-12  
In El Dorado - HCC leads 44-33  
Region VI - HCC leads 9-4  
Most consecutive wins - 13 (Twice)  
Most consecutive losses - 7  
Recorded overtimes - Butler leads 1-0  
Streak - Butler: 1

and the first four-game Jayhawk Conference losing streak since the 1952-53 season.

The Blue Dragons play host to a Butler team that is in second place in the Jayhawk West, 1 1/2 games behind Barton.

Butler (18-6, 7-3) is on a three-game winning streak, defeating both Seward County and Dodge City on the road and Garden City 56-44 last Wednesday at home. Butler had its second league bye week on Saturday.

### 2008-09 BLUE DRAGON SCHEDULE

Date	Opponent	Time/Result
<b>QUARTERBACK CLASSIC</b>		
Oct. 31	U. of St. Mary Junior Varsity	W, 86-54
Nov. 1	Labette	W, 79-57
<b>GRAND PRAIRIE HOTEL CLASSIC</b>		
Nov. 6-8	Sterling College JV	W, 102-45
Nov. 7	Fort Scott	W, 81-62
Nov. 8	Weatherford College	W, 97-68
Nov. 11	at Allen County	W, 79-53
<b>AIRPORT STEAKHOUSE CLASSIC</b>		
Nov. 14-15	Clarendon College	W, 88-78
Nov. 15	McCook	L, 68-70
Nov. 22	Highland	W, 79-72
Nov. 25	Allen County	L, 70-72
<b>JAYHAWK SHOOTOUT at Coffeyville</b>		
Dec. 5/7	vs. Coffeyville	L, 86-90
Dec. 6	vs. Kansas City	W, 78-48
Dec. 13	Central Nebraska	W, 96-73
Dec. 31	Friends University JV	W, 94-55
Jan. 3	Seward County	W, 76-69
Jan. 7	at Dodge City	W, 86-74
Jan. 10	Garden City	W, 82-80
Jan. 14	at Butler	L, 60-86
Jan. 21	Barton	W, 74-70
Jan. 25	at Colby	L, 50-73
Jan. 28	Pratt	W, 83-66
Jan. 31	at Cloud County	L, 70-71 (OT)
Feb. 2	at Seward County	L, 58-82
Feb. 4	Dodge City	L, 68-71
Feb. 7	at Garden City	L, 77-79
Feb. 11	Butler	7:30 p.m.
Feb. 18	at Barton	8 p.m.
Feb. 21	Colby	7:30 p.m.
Feb. 25	at Pratt	8 p.m.
Feb. 28	Cloud County	7:30 p.m.
Mar. 4	Region VI First Round at TBA	
Mar. 7-9	Region VI Tournament at Wichita	

### 2008-09 BLUE DRAGON NUMERICAL ROSTER

No.	Name	Pos	Ht.	Yr.	Hometown (Previous school)	Worth Noting
3	Darius Johnson-Odom	G	6-2	Fr.	Raleigh, NC (Wakefield HS)	Had SR 46 pts. vs. Coffeyville and 14 20-plus points games in 08-09.
15	Devon McBride	G	6-3	So.	Richmond, VA (Binghamton U.)	Has been indefinitely suspended from team.
21	Cliff Dixon	F	6-10	So.	Suitland, MD (Mottow State CC)	Posted 5th double-double of season (17 pts/11 rbs) vs. Barton.
22	Lazarus Johnson	G	6-3	Fr.	Miami, FL (Miami Senior HS)	Had season-high nine assists against Sterling College JV.
23	Javari Williams	F	6-5	R-Fr.	Brampton, Ontario (St. Joseph HS)	Had nine points, career-high 13 rebounds in first career start on 12/5.
24	Tom Shirley	F	6-7	Fr.	Grantville, KS (Jefferson West HS)	Hit 8 of 10 shots in 19-point outing against Weatherford.
25	Cody Beaton	G	6-0	Fr.	Hutchinson, KS (Buhler HS)	Went 4-4 from 3-point range, scored season-high 14 vs. Friends JV.
32	Chris Banks	G	6-2	So.	Fort Scott, KS (Fort Scott HS)	One of team's top defenders; held CNCC's top scorer to 3 of 19 FGs.
33	Austin Bond	G	6-0	So.	Kansas City, KS (Piper HS)	Had career-high 6 blocked shots vs. Barton on 1/21.
34	Dominique Rutledge	F	6-8	Fr.	Newark, NJ (Edison Academy)	Four of five double-doubles have come vs. Jayhawk West foes.
42	Ryan Douvier	F	6-6	So.	Newton, KS (Newton HS)	First start, Douvier scored 6 pts. with 10 rbs., 2 steals vs. USM. JV
RS	Everson Lacerda	C	6-11	So.	Belo Horizonte, Brazil (Colby CC)	Transfer from Colby; will redshirt in the 2008-09 season.

## DRAGONS CLIMB TO NO. 2 IN NJCAA IN ALL-TIME WINS

With their 76-69 victory over Seward County on Jan. 3, the Hutchinson Community College men's basketball team moved past Moberly Area Community College for second place on the NJCAA all-time wins list.

The Blue Dragons are 1,514-531, a winning percentage of .742, in their 78th season of men's basketball.

The Blue Dragons trail only Southeastern Iowa in all-time wins. Southeastern Iowa became the first NJCAA program to win 1,500 games in the 2007-08 season.

With a 79-53 victory over Labette on Nov. 1, 2008, the Blue Dragons became only the third NJCAA program to post 1,500 victories.

A 63-46 victory over river Butler Community College on Jan. 28, 2004, the Blue Dragons posted victory No. 1,400.

### NJCAA ALL-TIME WINS

1. Southeastern Iowa	.....1,540
2. Hutchinson	.....1,514
3. Moberly	.....1,511
4. Vincennes	.....1,453

## DRAGONS IN NATIONAL POLL

After being ranked as high at No. 15 in November in the NJCAA National Division I men's basketball poll, the Blue Dragons have completely fallen out of the latest poll.

A stretch of three losses in four games sent the Blue Dragons tumbling from the rankings. The Dragons were still receiving votes in the final November poll, but back-to-back losses to Allen County and Coffeyville knocked HCC completely out.

For only the fourth time since 2001, the Blue Dragons were ranked in a regular-season poll at No. 17. One week later, Hutchinson climbed to No. 15. HCC opened the 2008-09 season ranked No. 20. It's the second-straight season HCC starts ranked in the preseason.

The 2007-08 Blue Dragons opened ranked 26th. HCC was unranked in 2005. The 2003 poll had HCC starting 26th and the 2004 poll had HCC 13th. They were unranked in 2002 and 2001.

### TRACKING HCC'S NJCAA POLL PROGRESS

Preseason Poll	.....No. 20
November 18	.....No. 17
November 25	.....No. 25
December 2	.....RV
Dec. 9/Feb. 10	.....Unranked

## JOHNSON-ODOM ECLIPSES 36-YEAR OLD SCORING RECORD

HCC freshman guard Darius Johnson-Odom broke one of the longest-standing individual records in Blue Dragon basketball history on Dec. 5 against Coffeyville at the Jayhawk Shootout.

Johnson-Odom broke the single-game school record for scoring with 46 points in a 90-86 loss to Coffeyville.

The old record belonged to Richard Morsden, who scored 45 points against Dodge City in 1972.

For the game, Johnson-Odom hit 14 of 26 shots, 8 of 17 from 3-point range, and was 10 of 10 from the free-throw line. Johnson-Odom also had nine rebounds, four assists and one steal in 38:50.

Johnson-Odom carried the team, especially in the last 12 minutes, scoring 32 points during that span.

### BLUE DRAGON TOP 10 SINGLE SCORING GAMES

46 - Darius Johnson-Odom	.....2008
45 - Richard Morsden	.....1972
43 - Eric Stevens	.....1991
40 - Roy "Pooh" Hairston	.....1994
38 - Roy "Pooh" Hairston	.....1993
38 - Nate Brumfield	.....2006
37 - Darius Johnson-Odom	.....2008
37 - Tyrone Jones	.....1987
37 - William Davis	.....1988
37 - Ben Davis	.....1994
36 - Todd Christian	.....1986

## JOHNSON-ODOM OFF TO A SPECTACULAR START AT HCC

It didn't take a school-record scoring effort to convince Blue Dragon fans that freshman guard Darius Johnson-Odom was special. That 46-point effort against Coffeyville on Dec. 5 at the Jayhawk Shootout just solidified the fact that he was.

Johnson-Odom is starting to be referenced along side names of some Blue Dragon greats. His numbers in his freshman season are already a basis for the comparisons.

Johnson-Odom is currently 2nd in Region VI and is 18th in the NJCAA in scoring at 21.2 points per game. His streak of 10-straight 20-plus-point games was snapped on Jan. 14 at Butler.

Johnson-Odom has 16 games of scoring 20 or more points this season.

During a three-game stretch in the first semester of 30, 46 and 32 points, where he shot 48.3 percent overall and 44.4 percent (16 of 36) from 3-point range.

His 21.2 point scoring average currently ranks No. 6 on the Blue Dragon single-season list and is No. 3 on the HCC freshman scoring average list, trailing Blue Dragon greats Roy "Pooh" Hairston (1993) and Rudy Jackson (1973).

Johnson-Odom is now sixth on the HCC freshman scoring list with 531 points.

## Head Coach Ryan Swanson

Ryan Swanson is in his third season as Blue Dragon head coach. The Hutchinson native and former HCC player is the Blue Dragons' 13th head coach in 78 seasons of basketball.

HCC is the fourth head coaching stop - all at the junior college level - in Swanson's career. Swanson is 198-83 in eight-plus seasons as a juco head coach. He is now 62-26 at HCC. He is in 10th place on the HCC career coaching list.

He is the seventh HCC head coach to win 20 games in each of his first two seasons.

Swanson was the 12th straight HCC head coach to win 20 games in his first season. He led the Blue Dragons to a 23-8 record in 2006-07. Last season, Swanson guided the Blue Dragons to a 23-9 record and a second-place finish in the Jayhawk West, plus a quarterfinal berth in the Region VI Tournament.

Swanson was 74-24 in three seasons at St. Catharine's College, 16-14 in one season at Marshalltown, Iowa and 46-19 in two seasons at Garden City. Swanson led the 2004-05 Garden City team to its first conference championship in more than 50 years.

Swanson also has NCAA Division I coaching experience as an assistant at the University of Wisconsin-Milwaukee for Bruce Pearl (who is now at Tennessee).

Swanson's 2002-03 UWM team went 24-8, won the Horizon League crown and earned a trip to the NCAA Tournament for the first time in the school's 107-year history.

UWM was a No. 12-seed and just missed upsetting No. 5-seed Notre Dame 70-69.

Swanson, who graduated from Hutchinson High School, was a redshirt on the Blue Dragons' 1988 NJCAA national championship team, played in 1989 and was a graduate assistant for head coach David Farrar in 1990.

### SWANSON - BY THE NUMBERS

Career record (8th season)	.....198-83
Record at HCC (3rd season)	.....62-26
Record at Sports Arena	.....48-8
Record on opposing floors	.....9-17
Record on neutral courts	.....5-1
Record vs. Jayhawk West teams	.....26-19
Record vs. Jayhawk East teams	.....13-7
Record vs. Non-conference teams	.....24-2
Record vs. Nationally ranked teams	.....11-4
Record in Jayhawk Shootout	.....5-1
Record in Region VI Tournament	.....1-2
Record in overtime games	.....1-2
Record in games of 9 points or less	.....19-12
Record in games of 10 points or more	.....43-14

### SWANSON'S YEAR-BY-YEAR RECORD

Year	School	Record	Pct.
1997-98	St. Catharine College	.....24-7	.774
1998-99	St. Catharine College	.....24-9	.727
1999-00	St. Catharine College	.....26-8	.765
2000-01	Marshalltown CC	.....16-14	.533
2003-04	Garden City	.....23-9	.735
2004-05	Garden City	.....23-10	.697
2006-07	Hutchinson	.....23-8	.742
2007-08	Hutchinson	.....23-9	.719
2008-09	Hutchinson	.....16-9	.640
Totals		198-83	.705



## SERIES HISTORY WITH BUTLER

This will be the 169th meeting between Hutchinson and Butler. The Blue Dragons have a decisive 112-56 series advantage. Since 1988, the Grizzlies are 26-23 against Hutchinson.

Hutchinson is 59-19 in games played in Hutchinson and 44-12 at the Sports Arena. HCC is 44-33 in games played in El Dorado and the Dragons have a 9-4 advantage in Region VI matchups. Hutchinson has played more games against Butler than any other opponent in its history.

Hutchinson swept the season series from the Grizzlies last season. HCC defeated Butler 78-62 at El Dorado and then defeated the Grizzlies 70-53 at the Sports Arena.

On Jan. 14, Butler snapped a six-game skid vs. HCC, winning 86-60 at El Dorado.

### HCC'S ALL-TIME SERIES RESULTS WITH BUTLER

1/4/29.....El Dorado.....L, 23-27	Record - 112-56	1/81.....El Dorado.....L, 68-73
2/1/29.....Hutch.....W, 41-25	In Hutch - 59-19	2/81.....Hutch.....W, 85-61
1/3/30.....Hutch.....W, 38-31	At Sports Arena - 44-12	1/82.....El Dorado.....L, 62-64
1/30/30.....El Dorado.....W, 26-22	In El Dorado - 44-33	2/82.....Hutch.....W, 58-58
1/16/31.....El Dorado.....W, 20-11	Neutral Court - 0-0	1/83.....El Dorado.....W, 85-70
2/20/31.....Hutch.....W, 27-20	Region VI - 9-4	2/83.....Hutch.....W, 81-68
1/15/32.....Hutch.....L, 17-23	Most consecutive wins: 13	1/84.....El Dorado.....W, 83-61
2/19/32.....El Dorado.....W, 20-19	(Twice)	2/84.....Hutch.....W, 90-59
1/13/33.....El Dorado.....W, 33-29	Most consecutive losses: 7	1/85.....El Dorado L, 65-69, OT
2/17/33.....Hutch.....W, 23-19	Recorded overtimes: 0-1	2/85.....Hutch.....L, 55-56
1/34.....Hutch.....L, 22-25	Most points scored in one	1/86.....El Dorado.....L, 79-87
3/34.....El Dorado.....L, 18-23	game: 109 (HCC 109-60 in Jan.	2/86.....Hutch.....W, 99-86
1/4/35.....El Dorado.....L, 27-29	1979)	3/86.....(R6).....W, 77-71
2/19/35.....Hutch.....W, 38-22	Highest combined score: 195	1/87.....Hutch.....W, 74-71
1/17/36.....Hutch.....W, 39-28	(Butler won 103-92 in Jan.	2/87.....El Dorado.....W, 71-68
2/28/36.....El Dorado.....W, 30-21	1992)	1/6/88.....Hutch.....W, 98-72
1/15/37.....El Dorado.....W, 20-16	Largest winning margin: 49	1/30/88.....El Dorado.....L, 88-93
1/29/37.....Hutch.....W, 21-20	HCC won 109-60 in Jan. 1979)	1/89.....El Dorado.....L, 82-83
1/21/38.....Hutch.....W, 29-27	Largest losing margin: 28	2/89.....Hutch.....L, 81-85
2/11/38.....El Dorado.....W, 26-22	(Butler won 75-47 in Jan. 1997)	1/90.....Hutch.....L, 86-87
1/39.....Hutch.....W, 28-19		2/90.....El Dorado.....W, 92-89
2/3/39.....El Dorado.....W, 31-23		3/90.....(R6).....L, 71-81
1/12/40.....El Dorado.....L, 15-28		1/91.....Hutch.....L, 80-83
2/16/40.....Hutch.....W, 39-20	2/1/63.....El Dorado.....W, 105-82	2/91.....El Dorado.....L, 64-81
1/2/41.....El Dorado.....L, 23-35	2/11/63.....Hutch.....W, 96-81	1/92.....Hutch.....L, 92-103
1/17/41.....Hutch.....L, 21-28	1/18/64.....El Dorado.....W, 93-85	1/92.....El Dorado.....L, 71-89
1/2/42.....Hutch.....L, 13-24	2/25/64.....Hutch.....W, 81-75	3/92.....(R6).....L, 84-95
2/5/42.....El Dorado.....L, 20-33	3/64.....(R6).....W, 81-75	1/93.....El Dorado.....L, 71-83
1/43.....El Dorado.....L, 20-30	2/2/65.....Hutch.....W, 76-71	1/93.....Hutch.....W, 83-82
2/43.....Hutch.....L, 28-31	2/24/65.....El Dorado.....L, 74-78	3/93.....(R6).....L, 74-76
1/47.....El Dorado.....W, 33-31	3/2/65.....(R6).....W, 78-58	1/94.....Hutch.....L, 77-79
2/47.....Hutch.....W, 49-45	1/15/66.....El Dorado.....W, 101-64	2/94.....El Dorado.....L, 78-86
1/48.....Hutch.....W, 41-36	2/12/66.....Hutch.....L, 57-59	3/94.....(R6).....W, 73-57
2/48.....El Dorado.....L, 47-50	1/6/67.....El Dorado.....W, 76-74	1/95.....El Dorado.....W, 89-78
12/31/48.....El Dorado.....W, 55-34	2/4/67.....Hutch.....W, 95-70	2/95.....Hutch.....W, 92-54
1/21/49.....Hutch.....W, 57-39	2/28/67.....(R6).....W, 80-75	1/96.....Hutch.....L, 70-73
12/16/49.....Hutch.....W, 42-38	1/68.....Hutch.....W, 93-92	2/96.....El Dorado.....L, 67-72
2/17/50.....El Dorado.....W, 52-48	2/68.....El Dorado.....W, 83-76	1/97.....El Dorado.....L, 47-75
1/5/51.....El Dorado.....L, 33-35	1/69.....El Dorado.....L, 58-78	2/97.....Hutch.....L, 76-91
2/9/51.....Hutch.....W, 62-43	2/69.....Hutch.....W, 76-74	3/97.....(R6).....W, 66-56
1/4/52.....Hutch.....L, 44-45	3/69.....(R6).....L, 69-77	1/31/98.....Hutch.....W, 72-68
2/4/52.....El Dorado.....L, 58-61	3/69.....(R6).....W, 88-80	2/28/98.....El Dorado.....W, 66-60
12/22/52.....Hutch.....L, 60-62	1/70.....El Dorado.....W, 82-56	1/13/99.....El Dorado.....L, 61-72
2/6/53.....Hutch.....L, 50-70	2/70.....Hutch.....W, 78-73	2/8/99.....Hutch.....L, 67-69
12/22/53.....Hutch.....W, 74-58	12/70.....El Dorado.....W, 80-72	1/12/00.....Hutch.....W, 68-51
2/54.....El Dorado.....W, 77-70	2/71.....Hutch.....W, 74-73	2/7/00.....El Dorado.....W, 71-70
12/17/54.....Hutch.....W, 97-60	1/71.....Hutch.....W, 98-75	1/17/01.....El Dorado.....L, 65-75
2/8/55.....El Dorado.....W, 78-71	1/72.....El Dorado.....W, 92-64	2/14/01.....Hutch.....L, 64-74
1/24/56.....Hutch.....W, 100-86	1/73.....Hutch.....W, 93-92	1/16/02.....El Dorado.....L, 76-77
2/7/56.....El Dorado.....W, 87-67	2/73.....El Dorado.....W, 68-67	2/13/02.....Hutch.....W, 90-62
1/57.....El Dorado.....W, 70-54	1/74.....El Dorado.....W, 91-72	1/29/03.....Hutch.....W, 78-66
2/57.....Hutch.....W, 94-84	2/74.....Hutch.....W, 90-74	2/26/03.....El Dorado.....L, 56-59
3/57.....(R6).....W, 74-51	12/74.....Hutch.....W, 82-62	1/28/04.....El Dorado.....W, 63-46
1/10/58.....Hutch.....W, 81-64	2/75.....El Dorado.....W, 83-69	2/25/04.....Hutch.....W, 85-57
2/21/58.....El Dorado.....W, 90-65	1/76.....El Dorado.....L, 80-91	1/29/05.....Hutch.....W, 73-57
3/6/58.....(R6).....W, 94-71	2/76.....Hutch.....W, 99-81	2/26/05.....El Dorado.....L, 66-75
1/9/59.....El Dorado.....L, 79-82	2/77.....Hutch.....W, 64-50	1/29/06.....El Dorado.....W, 56-54
2/27/59.....Hutch.....W, 90-80	2/77.....El Dorado.....L, 74-85	2/25/06.....Hutch.....W, 54-52
1/5/60.....El Dorado.....W, 82-61	1/78.....Hutch.....W, 87-75	1/10/07.....Hutch.....W, 70-69
2/9/60.....Hutch.....W, 92-60	2/78.....El Dorado.....W, 81-80	2/10/07.....El Dorado.....W, 71-64
1/17/61.....Hutch.....W, 95-57	1/79.....El Dorado.....W, 109-60	1/9/08.....El Dorado.....W, 78-62
2/7/61.....El Dorado.....W, 86-56	2/79.....Hutch.....W, 99-55	2/9/08.....Hutch.....W, 70-53
1/26/62.....Hutchinson.....W, 107-69	1/80.....El Dorado.....W, 87-53	1/14/09.....El Dorado.....L, 60-86
2/20/62.....El Dorado.....W, 75-59	2/80.....Hutch.....W, 71-55	

## Tonight's Rosters

### HUTCHINSON BLUE DRAGONS (16-9, 5-6)

No.	Player	Pos.	Ht.	Yr.	Hometown
3	Darius Johnson-Odom	G	6-2	Fr.	Raleigh, NC
15	Devon McBride	G	6-3	So.	Richmond, VA
21	Cliff Dixon	F	6-10	So.	Suitland, MD
22	Lazarus Johnson	G	6-3	Fr.	Miami, FL
23	Javari Williams	F	6-5	R-Fr.	Brampton, Ontario
24	Tom Shirley	F	6-7	Fr.	Grantville, KS
25	Cody Beaton	G	6-0	Fr.	Hutchinson, KS
32	Chris Banks	G	6-2	So.	Fort Scott, KS
33	Austin Bond	G	6-0	So.	Kansas City, KS
34	Dominique Rutledge	F	6-8	Fr.	Newark, NJ
42	Ryan Douvior	F	6-6	So.	Newton, KS

Head Coach - Ryan Swanson

Assistant Coaches - Dave Brown, Ryan Freeberg

### BUTLER GRIZZLIES (18-6, 7-3)

No.	Player	Pos.	Ht.	Yr.	Hometown
1	Maurice Colter	G	5-10	So.	Forrestville, MD
3	Tracey Underwood	G	5-10	Fr.	Fort Wayne, IN
4	Mark Morgan	G	6-2	Fr.	White City, KS
5	Troy Pierce	F	6-5	Fr.	Emporia, KS
12	Zeb Garrison	G	6-0	Fr.	Augusta, KS
13	Kiel Riemann	G	6-4	So.	El Dorado, KS
15	RJ Jarrett	F	6-5	Fr.	Kansas City, KS
21	Rashano McRae	F	6-7	So.	Bronx, NY
23	Dushawn Brooks	F	6-5	Fr.	Chicago, IL
25	Caleb Walker	F	6-3	Fr.	Hutchinson, KS
32	Chance Riley	F	6-5	So.	Lawrence, KS
33	Luke Engelken	F	6-6	So.	St Joseph, MO
34	Keyon Milliner	G	6-2	Fr.	Indianapolis, IN
42	Sam Creecy	F	6-5	Fr.	Atlanta, GA

Head Coach - Mike Bargaen

Assistants - John Craig

## Statistical Comparison

	HCC	BCC
Offensive Average	78.7	73.7
Defensive Average	68.7	67.1
Offensive Field Goal Pct.	46.5	43.9
Offensive 3-Point Pct.	34.2	34.5
Free-throw Pct.	63.5	61.7
Defensive Field Goal Pct.	38.6	42.7
Defensive 3-Point Pct.	27.6	30.5
Opponent's Free-throw Pct.	65.2	60.9
Rebounds For	43.4	39.6
Rebounds Against	37.8	34.6
Offensive Rebounds For	14.8	14.8
Offensive Rebounds Against	15.2	11.8
Total Assists	408	326
Assists Per Game	16.3	13.6
Total Turnovers	477	419
Turnovers Per Game	19.1	17.5
Opponent's Turnovers	432	448
Opp. Turnovers Per Game	17.3	18.7
Total Blocked Shots	134	35
Blocked Shots Per Game	5.4	1.5
Total Steals	210	87
Steals Per Game	8.4	3.6

## SCOUTING BUTLER

The Grizzlies, under second-year coach Mike Bargen, had a strong non-conference season going 10-4. Now the Grizzlies are making noise in the Jayhawk West. The Grizzlies are in second place, 1 1/2 games off the pace of front-runner Barton.

Three players average in double figures for Butler, led by Keyon Milliner, who is averaging 14.8 points per game and shoots almost 49 percent from the floor. Milliner has already been to the free-throw line 133 times (an average of 5.5 attempts per game), but is a 54.1-percent shooter.

Luke Engelken is Butler's main 3-point threat. He is 62 of 155 from the arc (40.0 percent) and averages 11.0 points per game. Engelken also averages a team-high 6.8 rebounds per game. Maurice Colter averages 10.2 points per game.

Butler averages 73.7 points and shoots 43.9 percent from the field, 34.5 percent from long distance and 61.7 percent from the free-throw line. Defensively, the Grizzlies allow 67.1 points and 42.6 percent shooting.

## FIRST MEETING WITH BUTLER

The Blue Dragons had their six-game winning streak snapped and lost in the Jayhawk West for the first time after falling to Butler 86-60 on Jan. 14 at El Dorado.

Butler (13-4, 2-1 Jayhawk West) took advantage of every Blue Dragon mistake, scoring 34 points off of 23 HCC turnovers and scoring 23 points off offensive rebounds.

The 26-point defeat was the Grizzlies-largest defeat in the 168-game series with the Grizzlies.

Butler was dominant from the start, building an 11-point lead just 7 minutes into the game. The Blue Dragons (14-4, 3-1) pulled within seven points with 5:01 to play, but the Grizzlies outscored HCC 19-4 to close out the half.

The Grizzlies held HCC's leading scorer, Darius Johnson-Odom, to his lowest point total of the season, just six points on 1 of 9 shooting.

Sophomore Devon McBride scored a career-high 24 points to lead HCC. Sophomore Cliff Dixon had nine points before being injured early in the second half.

The Blue Dragons shot 21 of 48 overall (43.8 percent), but were just 2 of 13 from 3-point range and 16 of 27 from the free-throw line. The 60 points were a season-low point total.

Butler was led by Caleb Walker's 29 points, seven rebounds and four steals. Dushawn Brooks had 15 points, while Kenyon Miller scored 14 points and Maurice Colter added 10.

The Grizzlies were 34 of 72 shooting (47.2 percent) and hit 6 of 18 from 3-point range and 12 of 16 from the free-throw line.

Butler handed Hutchinson its largest rebounding deficit, outrebounding the Blue Dragons 46-28, pulling down 22 offensive rebounds. The Grizzlies had 15 steals among HCC's 23 turnovers.

## LAST GAME RECAP: GARDEN CITY

For the second-straight game, the Hutchinson Community College men's basketball team fell behind by double digits in the first half, only to see a furious second-half rally fall short.

On Saturday night, the Blue Dragons trailed Garden City by 18 points with 12:20 to play in the second half and rallied to make it a one-possession game, but ultimately dropped their fourth game in a row, losing 79-77 to the Broncbusters at the Perryman Athletic Complex.

HCC trailed Garden City 39-23 at halftime, but outscored the Busters 54-40 in the second half, shooting 60 percent (21 of 35) from the field and committing only 4 of its 15 turnovers in the final 20 minutes. The bulk of that comeback came with Johnson-Odom on the bench. He fouled out with 4:52 to play and HCC trailing 74-62. The Dragons proceeded to outscore Garden City (16-6, 6-4) 15-5 the rest of the way.

After Cliff Dixon's bucket with 2 seconds remaining pulled HCC within 79-77, Garden City's Reggie Davis missed two free throws and Austin Bond's half-court heave didn't miss by much.

Dixon scored a season-high 29 points on 11 of 20 shooting. He added nine rebounds, two steals and a blocked shot. Johnson-Odom finished with 23 points. Tom Shirley and Dominique Rutledge finished with seven points each.

After shooting just 27.3 percent in the first half, the Blue Dragons finished at 47.4 percent for the game (27 of 57), including 5 of 16 from 3-point range. The Dragons were 18 of 27 from the free-throw line. They were outrebounded 41-33.

Richard Thomas hit four of Garden City's six 3-point goals and finished with a team-high 22 points. Thomas Manzano was 10 of 15 shooting and finished with 21 points. Travis Burley had 12 and Deon Anderson had 10 points for the Busters.

Garden City was 32 of 67 shooting (47.8 percent), including 6 of 18 from 3-point range and 9 of 18 from the free-throw line. Garden City had 16 turnovers.

## Jayhawk Conference Men's Standings

Jayhawk West	League	Overall
Barton	9-2	22-3
Butler	7-3	18-6
Garden City	6-4	16-8
Seward County	6-5	19-6
<b>Hutchinson</b>	<b>5-6</b>	<b>16-9</b>
Cloud County	5-6	16-9
Pratt	4-6	14-10
Dodge City	3-8	10-15
Colby	3-8	5-20
Jayhawk East	League	Overall
Coffeyville	11-1	19-5
Cowley College	9-3	20-4
Independence	8-4	13-11
Johnson County	8-4	16-7
Allen County	7-5	12-12
Neosho County	5-7	13-11
Fort Scott	3-9	9-15
Highland	3-9	11-13
Kansas City, KS	3-9	7-17
Labette	3-9	7-17

### Wednesday, February 11

Butler at Hutchinson, 7:30 p.m.
Dodge City at Colby, 7:30 p.m.
Garden City at Barton, 8 p.m.
Seward County at Pratt, 8 p.m.
Allen County at Coffeyville, 8 p.m.
Fort Scott at Independence, 8 p.m.
Johnson County at Neosho County, 8 p.m.
Kansas City at Highland, 7 p.m.
Labette at Cowley, 7:30 p.m.

## 2008-09 NJCAA Division I Basketball Poll

Team	2008-09 Record
1. Chipola College, Fla.	25-1
2. Indian Hills CC, Iowa	25-1
3. Miami-Dade College, Fla.	23-2
4. Southeastern Illinois	21-1
5. South Plains College, Texas	21-2
6. Southwest Tennessee	18-1
7. Midland College, Texas	23-3
8. North Dakota State College of Science	25-1
9. Southwestern Illinois	22-2
10. Salt Lake CC, Utah	20-3
11. Barton	22-3
12. Shelton State CC, Ala.	23-2
13. Monroe College, N.Y.	24-2
14. Southeastern Iowa	21-4
15. Western Oklahoma State	19-4
16. North Idaho	21-3
17. Tyler Junior College	18-4
18. Cowley College	20-4
19. Collin County, Texas	20-4
20. McLennan CC, Texas	21-3
21. Highland CC, Ill.	21-3
22. Jacksonville College, Texas	19-5
23. College of Eastern Utah	19-4
24. Arizona Western College	20-4
25. South Georgia Technical College	21-5

**Others receiving votes:** ; Coffeyville (19-5); Jones County CC, Miss. (18-4); Wallace State CC, Ala. (21-4); College of Southern Idaho (18-6); Polk CC, Fla. (21-5); Chattanooga State, Tenn. (20-5); Cochise CC, Ariz. (19-5); Three Rivers CC, Mo. (21-4); Western Nebraska (19-5); Lon Morris College, Texas (19-5); Northern Oklahoma-Enid (18-7); Sheridan College, Wyo. (19-6); Trinity Valley CC, Texas (17-7).

## BLUE DRAGONS IN NJCAA STATISTICAL LEADERS

- Freshman guard Darius Johnson-Odom is ranked No. 18 in scoring at 21.2 points per game.
- The Blue Dragons are ranked No. 35 in the NJCAA in scoring defense at 68.7 points per game.

## DRAGON DEFENSE GETTING IT DONE AGAIN

After a season where they set a new program record for defensive field goal percentage, the 2008-09 Blue Dragons are at it again on the defensive end of the floor.

Through 25 games this season, the 2008-09 Blue Dragons are nearly on pace to break the same record they broke last season. HCC is allowing opposing teams to shoot just 38.6 percent this season. That mark currently leads Region VI.

The Blue Dragons are allowing just 68.7 points per game, which ranks seventh in Region VI and 35th in the NJCAA.

Only 10 of 25 opponents have shot better than 40 percent and two have just shot 50 percent or better.

Opposing teams are shooting just 27.6 percent from 3-point range and are committing 17.3 turnovers per game against the Dragons.

Last year's Blue Dragons allowed opponents just 38.1 percent shooting from the floor. They tied for second in the Jayhawk West in points allowed at 68 points per game.

BLUE DRAGON TOP 10 DEFENSIVE SCORING AVERAGE	
1. 2007-08.....	38.4%
2. 2008-09.....	38.6%
3. 2003-04.....	38.9%
4. 2002-03.....	39.0%
5. 1993-94.....	39.7%
6. 1988-89.....	40.3%
7. 1989-90.....	40.3%
8. 1971-72.....	40.8%
2006-07.....	40.8%
9. 1995-96.....	40.9%
10. 1972-73.....	41.1%

## AFTER INJURY, RUTLEDGE STARTS TO ROLL

Hampered by a nagging injury in the preseason, freshman forward Dominique Rutledge has begun to show why he was recruited to be a Blue Dragon.

The 6-foot-8 freshman forward was inconsistent through November, but once the calendar flipped to December, Rutledge has been a main cog in the Blue Dragon machine.

With only one game scoring in double figures in his first 10, Rutledge has scored in double figures in 8 of his last 12 games, getting a seven-game streak in double figures snapped on Jan. 14 at Butler.

Rutledge has a season-high 22 against Central Nebraska on Dec. 13. He was 10 of 18 from the field against the Raiders.

Before an off game against Dodge City, in the 11 previous games Rutledge has averaged 12.4 points per game and has shot 50.1 percent from the field. He's also averaged 8.2 rebounds.

He posted four double-doubles this season.

## DRAGONS BANKING ON CHRIS BANKS AS A DEFENSIVE STOPPER

When you look at a Blue Dragon boxscore, don't look at freshman Chris Banks' offensive stats to prove how productive he was. But do check out the people he guarded and that will give you an indication of Banks' game.

Banks, a sophomore from Fort Scott, has been a true defensive stopper since joining the lineup on Nov. 22.

Banks has been in charge of defending some of the top opposing offensive players. Against Central Nebraska, The Raiders Aaron Morrissey was averaging almost 24 points per game. Banks held him to a mere 4 of 16 shooting and 10 points.

Against Dodge City's Rodney Clinkscales, who averaged 19.6 points per game, Banks had the primary defensive assignment. Banks had a major part in holding Clinkscales to just 3 of 15 shooting and a season-low 11 points.

## JOHNSON-ODOM IS NATIONAL PLAYER OF THE WEEK

Freshman guard Darius Johnson-Odom was named NJCAA National Division I Player of the Week after a spectacular performance in the first weekend of December at the Jayhawk Shootout in Coffeyville.

Johnson-Odom broke the single-game school record with a 46-point outing in a 90-86 loss to Coffeyville on Friday night. The old record belonged to Richard Morsden, who scored 45 points against Dodge City in 1972.

For the game, Johnson-Odom hit 14 of 26 shots, 8 of 17 from 3-point range, and was 10 of 10 from the free-throw line. Johnson-Odom also had nine rebounds, four assists and one steal in 38 minutes, 50 seconds. Johnson-Odom carried the team, especially in the last 12 minutes, scoring 32 points during that span.

(Continued on Next Page)

## Miscellaneous Statistics

Record at home .....	13-3
Record on road .....	2-6
Record on neutral courts .....	1-0
Largest margin of victory .....	57
Largest margin of defeat.....	26
Largest lead surrendered in loss .....	11
Largest halftime lead surrendered in loss .....	9
Largest deficit overcome to win .....	6
Largest halftime deficit overcome to win .....	0
Record when ahead at halftime .....	15-2
Record when behind at halftime .....	0-7
Record when tied at halftime.....	1-0
Record when shooting 50 pct. or better .....	8-1
Record when shooting less than 50 pct.....	8-8
Record when opp. shoots 50 pct. or better .....	0-2
Record when opp. shoots less than 50 pct. ....	16-7
Record when outshooting opponent .....	16-1
Record when outshot by opponent .....	0-8
Record when outrebounding opponent .....	16-3
Record when outrebounded by opponent .....	0-5
Record when rebounding is even .....	0-1
Record in overtime.....	0-1
Record when scoring 80 points or more.....	10-1
Record when scoring 79 points or fewer .....	6-8
Record when allowing 80 points or more .....	2-2
Record when allowing 79 points or fewer.....	15-6
Times HCC scores 100 points or more .....	1
Times HCC scores 90-99 points .....	3
Times HCC scores 80-89 points .....	7
Times HCC scores 70-79 points .....	9
Times HCC scores 60-69 points .....	3
Times HCC scores 50-59 points .....	2
Times HCC scores 40-49 points .....	0
Times HCC scores 30-39 points .....	0
Times HCC scores 29 points or fewer .....	0
Times HCC shoots 60 percent or better .....	2
Times HCC shoots 50 to 59 percent .....	7
Times HCC shoots 40 to 49 percent .....	13
Times HCC shoots 30 to 39 percent .....	3
Times HCC shoots 29 percent or less .....	0
Times opponent scores 100 points or more .....	0
Times opponent scores 90-99 points .....	1
Times opponent scores 80-89 points .....	3
Times opponent scores 70-79 points .....	11
Times opponent scores 60-69 points .....	4
Times opponent scores 50-59 points .....	4
Times opponent scores 40-49 points .....	2
Times opponent scores 30-39 points .....	0
Times opponent scores 29 points or fewer .....	0
Times opponent shoots 60 percent or better .....	0
Times opponent shoots 50 to 59 percent.....	2
Times opponent shoots 40 to 49 percent.....	8
Times opponent shoots 30 to 39 percent .....	12
Times opponent shoots 29 percent or less .....	2

Two days later, Johnson-Odom scored 32 points in a 78-48 victory over Kansas City. Johnson-Odom hit 12 of 17 shots, 3 of 7 from long range and was 5 of 6 from the free-throw line. Johnson-Odom had a double-double with 10 rebounds, adding three assists, and a steal in 31:52 of playing time.

Johnson-Odom averaged 39 points per game, hitting 26 of 43 overall shots (60.5 percent), 11 of 24 from 3-point range (45.8 percent) and 15 of 16 from the free-throw line (93.8 percent).

### HOME COOKING GOOD TO BLUE DRAGONS

The Blue Dragons have always enjoyed a strong home-court advantage in the 7,000-seat Sports Arena. With their 70-60 victory over Cloud County on Jan. 14, 2006, the Blue Dragons earned their 700th regular-season victory in the famed basketball venue.

Moving into the Sports Arena in the 1952-53 season, the Blue Dragons have amassed a 751-133 record in this building.

In the 53 years that Hutchinson has called the Sports Arena home; the Blue Dragons have averaged 13.1 wins at home. The 2007-08 team went 17-3 at home.

They went undefeated through an entire home season seven times (1958-59, 1959-60, 1973-74, 1974-75, 1981-82, 1987-88, 2003-04).

Before the Sports Arena, HCC played at Memorial (Convention) Hall from 1928 to 1952 where the Blue Dragons were 112-50.

### FORWARD CLIFF DIXON REINSTATED FOR SECOND SEMESTER

The HCC coaching staff has reinstated sophomore forward Cliff Dixon (Suitland, MD) for the second semester.

Dixon had been suspended since Nov. 19 for conduct detrimental to the team. He missed four games during his suspension. Before the suspension, Dixon was averaging 15.9 points and 7.1 rebounds per game.

In his return to the line-up on Dec. 31, Dixon scored just four points on 2 of 3 shooting, but had eight rebounds and season highs of five assists, three blocked shots and three steals.

Since returning to the lineup, Dixon is averaging 12.6 points per game, shooting 52.8 percent, and 8.2 rebounds per game.

### NOTING THE BLUE DRAGONS

- Tom Shirley is the brother of former Iowa State standout Paul Shirley.
- The last time that Hutchinson allowed 100 points in a game was Jan. 24, 2004, when the Dragons gave up triple digits in a 100-94 loss to Barton County. That's a streak of 258 games.

### SEASON-OPENING SUCCESS

The Blue Dragons have been hard to beat on opening night over the years.

Hutchinson is 59-19 in season openers, winning 11 of the last 12 opening games.

Hutchinson is 64-14 in home openers.

The highest point total for HCC on opening night was 115 points scored against Joliet Junior College in a 115-103 victory in 1977. Hutch has surpassed the century mark five times on opening night: 102 vs. York College in 1965; 115 vs. Joliet in 1977, 101 vs. Western Nebraska in 1990, 107 vs. Malcolm X I 1997 and 100 vs. Malcolm X in 1998.

The largest opening night winning margin was 58 set in 1992, an 88-32 win over Hesston College.

### 2008-09 BLUE DRAGONS BRING BACK LITTLE EXPERIENCE

Even in Ryan Swanson's first season two years ago at HCC he had more returning experience than he does heading into the 2008-09 season.

The Dragons start as the preseason favorite to win the Jayhawk Conference Western Division and are ranked 20th in the preseason NJCAA Division I poll.

Only two players return with court time with the Blue Dragons from last season.

Those two players – guard Austin Bond and forward Ryan Douvier – played a combined total of 246 minutes.

Bond is a 6-foot-3 guard from Kansas City, Kan. (Piper High School). His freshman season was extremely limited because of injuries. In 13 games, Bond averaged 2.9 points, shooting 31.3 percent from 3-point range.

Douvier is a 6-6 forward from Newton. He saw limited playing time as a freshman, averaging 0.6 points and 0.6 rebounds.

Swanson will have a pair of talented transfers and a group of untested freshmen to try and lead the Blue Dragons to their first Jayhawk West championship since 2004 and the first Region VI crown since 1997.

## Blue Dragon Region VI Team Rankings

Category	Rank	Avg./Pct.
Scoring Offense	7	78.7
Scoring Defense	7	68.7
Scoring Margin	5	+10.0
Field Goal Percentage	6	46.5
3-Point Percentage	10	34.2
Free-Throw Percentage	6	63.5
Defensive Field Goal Pct.	2	38.6
Defensive 3-Point Pct.	1	27.6
Rebounds	3	43.36
Rebounds Against	12	37.82
Rebounding Margin	6	+5.54
Assists	6	16.32
Steals	11	8.40
Blocked Shots	2	5.36

## Blue Dragon Region VI Individual Rankings

### SCORING

2. Darius Johnson-Odom.....21.2 ppg

### FIELD-GOAL PERCENTAGE

No players listed

### 3-POINT PERCENTAGE

No players listed

### 3-POINT GOALS GAME PER GAME

10. Darius Johnson-Odom.....2.04/Gm

### FREE-THROW PERCENTAGE

6. Darius Johnson-Odom.....79.1%

### REBOUNDING

7. Dominique Rutledge.....7.80 rpg

8. Cliff Dixon .....7.65 rpg

### ASSISTS

5. Darius Johnson-Odom.....4.91 apg

### BLOCKED SHOTS

5. Dominique Rutledge .....1.43 bpg

6. Cliff Dixon.....1.30 bpg

### STEALS

No players listed

## JAYHAWK WEST PRESEASON PREDICTIONS

The Blue Dragons were picked to win the 2009 Jayhawk West championship in a poll of league coaches released at the annual Jayhawk Conference Media Day on Oct. 13 in Wichita.

Hutchinson, Cloud County and Barton were the top three picked by the coaches.

Last season, HCC was picked to finish second in the preseason poll.

Cowley College was the prohibitive favorite to win the Jayhawk East in 2009.

### 2008-09 JAYHAWK WEST PREDICTIONS

1. Hutchinson
2. Cloud County
3. Barton
4. Garden City
5. Seward County
6. Dodge City
7. Pratt
8. Butler
9. Colby

## BLUE DRAGON FAMILY LOSES ONE OF ITS GREATS - CORTEZ BARNES

Cortez Barnes, one of the top 3-point shooters and all-around players in HCC men's basketball history, died in a car accident in Texas on Sept. 21, 2008.

Barnes, an All-Jayhawk Conference performer who played at HCC in 1990-91 and 1991-92, was on his way to Wichita from his home in Dallas when the accident occurred.

Barnes, 36, and his wife, Jamai, had six children.

Barnes came to HCC before the 1990-91 season for coach Dave Farrar after a stellar prep career at Wichita Heights.

A versatile 6-foot-7 forward, Barnes became the program's career leader in 3-point field goals, tallying 122 for his career. That mark is still third on the career chart today.

Barnes scored 994 career points at HCC, which ranks 12th on the career chart. He's 10th in made field goals (390) and third in 3-point attempts (350).

During his freshman season in 1990-91, Barnes averaged 16.3 points per game, shooting 44 percent from the field overall and 38.8 percent from behind the 3-point arc. The 62 3-pointers are the sixth-most in single-season history and fourth most by a freshman. The 38.8 percent efficiency ranks sixth on the single-season charts and is tied for seventh on the freshman chart. His 489 points rank seventh on the freshman chart. His scoring average is tied for sixth on the freshman chart.

The Blue Dragons went 21-9 in 1991, Farrar's final season at Hutchinson. Under new head coach Steve McClain, Barnes averaged 14.8 points and hit 31.6 percent from 3-point range. The Dragons were 27-7 and finish as Region VI runner-up to eventual national runner-up Butler County.

## Blue Dragon Season Double-Doubles

Cliff Dixon (season - 5; career 19)

Nov. 8 vs. Weatherford College .....	17 pts./12 rebs.
Jan. 3 vs. Seward County .....	14 pts./10 rebs.
Jan. 7 vs. Dodge City .....	18 pts./10 rebs.
Jan. 10 vs. Garden City .....	11 pts./11 rebs.
Jan. 21 vs. Barton .....	17 pts./11 rebs.

Darius Johnson-Odom (season - 2; career 2)

Nov. 22 vs. Highland .....	22 pts./15 rebs.
Dec. 7 vs. Kansas City .....	32 pts./10 rebs.

Dominique Rutledge (season - 5; career 5)

Dec. 5 vs. Coffeyville .....	10 pts./10 rebs.
Dec. 7 vs. Kansas City .....	14 pts./10 rebs.
Jan. 3 vs. Seward County .....	15 pts./13 rebs.
Jan. 21 vs. Barton .....	12 pts./10 rebs.
Jan. 28 vs. Pratt .....	10 pts./14 rebs.

## 40-Point Games

46 - Darius Johnson-Odom vs. Coffeyville .....	Dec. 5, 2008
--	--------------

## 30-Point Games

37 - Darius Johnson-Odom vs. Pratt .....	Jan. 28, 2008
32 - Darius Johnson-Odom vs. Kansas City .....	Dec. 7, 2008
30 - Darius Johnson-Odom vs. Allen County .....	Nov. 25, 2008

## 20-Point Games

29 - Cliff Dixon vs. Garden City .....	Feb. 7, 2009
28 - Darius Johnson-Odom vs. Garden City .....	Jan. 10, 2009
27 - Cliff Dixon vs. Clarendon .....	Nov. 14, 2008
25 - Darius Johnson-Odom vs. Allen County .....	Nov. 11, 2008
24 - Darius Johnson-Odom vs. McCook .....	Nov. 15, 2008
24 - Darius Johnson-Odom vs. Dodge City .....	Jan. 7, 2009
24 - Devon McBride vs. Butler .....	Jan. 14, 2009
24 - Cliff Dixon vs. Cloud County .....	Jan. 31, 2009
24 - Darius Johnson-Odom vs. Dodge City .....	Feb. 4, 2009
23 - Devon McBride vs. Sterling College JV .....	Nov. 6, 2008
23 - Darius Johnson-Odom vs. Fort Scott .....	Nov. 7, 2008
23 - Devon McBride vs. Allen County .....	Nov. 25, 2008
23 - Darius Johnson-Odom vs. Garden City .....	Feb. 7, 2008
22 - Darius Johnson-Odom vs. Highland .....	Nov. 22, 2008
22 - Dominique Rutledge vs. Central Nebraska .....	Dec. 13, 2008
22 - Darius Johnson-Odom vs. Friends JV .....	Dec. 31, 2008
21 - Darius Johnson-Odom vs. Seward County .....	Jan. 3, 2009
21 - Devon McBride vs. Colby .....	Jan. 25, 2009
21 - Cliff Dixon vs. Seward County .....	Feb. 2, 2009
20 - Darius Johnson-Odom vs. St. Mary JV .....	Oct. 31, 2008
20 - Darius Johnson-Odom vs. Central Nebraska .....	Dec. 13, 2008

## 10-Rebound Games

15 - Darius Johnson-Odom vs. Highland .....	Nov. 22, 2008
13 - Javari Williams vs. Coffeyville .....	Dec. 5, 2008
14 - Dominique Rutledge vs. Pratt .....	Jan. 28, 2009
13 - Dominique Rutledge vs. Seward County .....	Jan. 3, 2009
13 - Dominique Rutledge vs. Cloud County .....	Jan. 31, 2009
12 - Tom Shirley vs. Labette .....	Nov. 1, 2008
12 - Cliff Dixon vs. Weatherford College .....	Nov. 8, 2008
11 - Cliff Dixon vs. Dodge City .....	Jan. 7, 2009
11 - Cliff Dixon vs. Garden City .....	Jan. 10, 2009
11 - Cliff Dixon vs. Barton .....	Jan. 21, 2009
10 - Ryan Douvier vs. St. Mary JV .....	Oct. 31, 2008
10 - Dominique Rutledge vs. Coffeyville .....	Dec. 5, 2008
10 - Darius Johnson-Odom vs. Kansas City .....	Dec. 7, 2008
10 - Dominique Rutledge vs. Kansas City .....	Dec. 7, 2008
10 - Cliff Dixon vs. Seward County .....	Jan. 3, 2009
10 - Dominique Rutledge vs. Barton .....	Jan. 21, 2009

## 2008-09 Blue Dragon Men's Basketball Game-By-Game Review

Date	Opponent	Score	Record (JC)	Points	Rebounds	Assists	Steals
Oct. 31	U. of St.Mary JV*	W, 86-54	1-0	20 - Johnson-Odom	10 - Douvier	6 - Johnson	2 - 4 tied
Nov. 1	Labette*	W, 79-57	2-0	19 - Dixon	12 - Shirley	8 - Johnson-Odom	3 - Johnson-Odom, Dixon
Nov. 6	Sterling College JV^	W, 102-45	3-0	23 - McBride	9 - Shirley	9 - Johnson	5 - Williams
Nov. 7	Fort Scott^	W, 81-62	4-0	23 - Johnson-Odom	9 - Johnson	5 - Johnson/J.-Odom	2 - Dixon, Johnson
Nov. 8	Wetherford College^	W, 97-68	5-0	19 - Shirley	12 - Dixon	7 - Johnson	3 - Dixon
Nov. 11	Allen County	W, 79-53	6-0	25 - Johnson-Odom	7 - Johnson-Odom	9 - Johnson-Odom	3 - Rutledge
Nov. 14	Clarendon College#	W, 88-78	7-0	27 - Dixon	7 - Dixon; J.-Odom	6 - Johnson-Odom	2 - J.-Odom, Dixon
Nov. 15	McCook#	L, 68-70	7-1	24 - Johnson-Odom	7 - Shirley, Dixon	5 - Bond	2 - Williams
Nov. 22	Highland	W, 79-72	8-1	22 - Johnson-Odom	15 - Johnson-Odom	6 - Johnson/J.-Odom	1 - Johnson/J.-Odom
Nov. 25	Allen County	L, 70-72	8-2	30 - Johnson-Odom	6 - Rutledge	3 - McBride	4 - Johnson-Odom
Dec. 5	Coffeyville+	L 86-90	8-3	46 - Johnson-Odom	13 - Williams	5 - Williams	2 - Williams
Dec. 7	Kansas City+	W, 78-48	9-3	32 - Johnson-Odom	10 - J.-Odom/Rutledge	4 - Johnson	4 - Williams
Dec. 13	Central Nebraska	W, 96-73	10-3	22 - Rutledge	9 - Johnson-Odom	9 - Johnson-Odom	3 - J-Odom/Rutledge
Dec. 31	Friends University JV	W, 94-55	11-3	22 - Johnson-Odom	9 - Rutledge	7 - Johnson	4 - J.-Odom/Banks
Jan. 3	Seward County	W, 76-69	12-3 (1-0)	21 - Johnson-Odom	13 - Rutledge	4 - Johnson-Odom	3 - Williams
Jan. 7	Dodge City	W, 86-74	13-3 (2-0)	24 - Johnson-Odom	11 - Dixon	7 - Johnson-Odom	1 - 4 tied
Jan. 10	Garden City	W, 82-80	14-3 (3-0)	28 - Johnson-Odom	11 - Dixon	3 - 4 tied	2 - 3 tied
Jan. 14	Butler	L, 60-86	14-4 (3-1)	24 - McBride	7 - Rutledge	8 - Johnson-Odom	2 - 3 tied
Jan. 21	Barton	W, 74-70	15-4 (4-1)	17 - Dixon	11 - Dixon	8 - Johnson-Odom	2 - J.-Odom/Williams
Jan. 25	Colby	L, 50-73	15-5 (4-2)	21 - McBride	9 - Dixon	3 - Shirley, Banks	3 - J.-Odom/Williams
Jan. 28	Pratt	W, 83-66	16-5 (5-2)	37 - Johnson-Odom	14 - Rutledge	3 - 3 tied	1 - 6 tied
Jan. 31	Cloud County	L, 70-71 (OT)	16-6 (5-3)	24 - Dixon	13 - Rutledge	3 - J-Odom/Dixon	2 - Williams
Feb. 2	Seward County	L, 58-82	16-7 (5-4)	21 - Dixon	9 - Rutledge	4 - Johnson-Odom	2 - Williams, Rutledge
Feb. 4	Dodge City	L, 68-71	16-8 (5-5)	24 - Johnson-Odom	9 - Dixon	4 - Johnson-Odom	6 - Dixon
Feb. 7	Garden City	L, 77-79	16-9 (5-6)	29 - Dixon	9 - Dixon	4 - Johnson/Bond	3 - Bond
Feb. 11	Butler						
Feb. 18	Barton						
Feb. 21	Colby						
Feb. 25	Pratt						
Feb. 28	Cloud County						

\* - Quarterback Classic; ^ - Grand Prairie Classic; # - Airport Steakhouse Classic; + - Jayhawk Shootout at Coffeyville

### Record by Starting Lineup

Johnson-Odom, McBride, Johnson, Shirley, Douvier.....	2-0
Johnson-Odom, McBride, Dixon, Johnson, Shirley .....	4-0
Johnson-Odom, McBride, Dixon, Shirley, Bond .....	1-1
Johnson-Odom, McBride, Shirley, Bond, Douvier .....	1-0
Johnson-Odom, McBride, Johnson, Shirley, Rutledge.....	0-1
Johnson-Odom, Johnson, Williams, Shirley, Rutledge.....	1-1
Johnson-Odom, Johnson, Shirley, Banks, Rutledge .....	4-3
Johnson-Odom, Johnson, Williams, Shirley, Rutledge.....	1-0
Johnson-Odom, McBride, Shirley, Banks, Rutledge .....	2-1
Johnson-Odom, Dixon, Williams, Banks, Rutledge .....	0-2

### Blue Dragon Win/Loss Margin

Margin	Win	Loss		
11	0	11	0	0
12	1	12	1	0
13	0	13	0	0
14	0	14	0	0
15	0	15	0	0
16	0	16	0	0
17	1	17	1	0
18	0	18	0	0
19	1	19	1	0
20	0	20	0	0
20+	8	20+	8	3

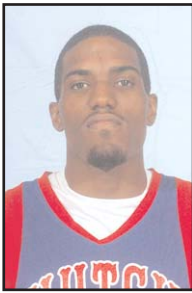
## 2008-09 Blue Dragon Individual/Team Superlatives

	<b>HCC INDIVIDUAL HIGH</b>	<b>OPPONENT INDIVIDUAL HIGH</b>
Points Scored	46 - Darius Johnson-Odom vs. Coffeyville	38 - Shamar Acuay, Colby
Field Goals	14 - Darius Johnson-Odom vs. Coffeyville	15 - Shamar Acuay, Colby
Field Goal Attempts	26 - Darius Johnson-Odom vs. Coffeyville	25 - Shamar Acuay, Colby
Field goal Pct. (min. 5 att.)	80.0 - Javari Williams vs. Sterling JV (4-5) 80.0 - Devon McBride vs. Weatherford (4-5) 80.0 - Javari Williams vs. Highland (4-5) 80.0 - Austin Bond vs. Friends JV (4-5)	77.8 - Danny Agbelese, Clarendon (7-9)
3-Pointers	8 - Darius Johnson-Odom vs. Coffeyville	4 - Tyler Nordman, Highland 4 - Fred Williams, Garden City
3-Point Attempts	17 - Darius Johnson-Odom vs. Coffeyville	10 - Tyler Nordman, Highland
3-Point Pct. (min. 3 att.)	100.0 - Tom Shirley vs. Allen County (4-4) 100.0 - Cody Beaton vs. Friends JV (4-4)	100.0 - Aaron Jackson, Allen County (3-3)
Free Throws	14 - Darius Johnson-Odom vs. Pratt	12 - Marcus Brister, Weatherford
Free-Throw Attempts	19 - Darius Johnson-Odom vs. Pratt	17 - Marcus Brister, Weatherford
Free-Throw Pct. (min. 5 att.)	100.0 - Darius Johnson-Odom vs. McCook (13-13)	87.5 - Antoine Branch, Coffeyville (7-8)
Rebounds	15 - Darius Johnson-Odom vs. Highland	20 - Shamar Acuay, Colby
Assists	9 - Lazarius Johnson vs. Sterling College JV 9 - Darius Johnson-Odom - 2 times (last vs. Central Nebraska)	10 - Bob Wesley, Garden City
Blocked Shots	5 - Austin Bond vs. Barton	4 - Danny Agbelese, Clarendon
Steals	6 - Cliff Dixon vs. Dodge City	9 - Shamar Acuay, Colby
	<b>HCC TEAM HIGHS</b>	<b>HCC TEAM LOWS</b>
Points scored	102 - Sterling College JV	50 - Colby
One half	56 - Dodge City	16 - Dodge City
FG made	39 - Sterling College JV	18 - McCook, Dodge City
FG attempts	74 - Central Nebraska	41 - Cloud County
FG percentage	64.2 - Dodge City (34-53)	30.2 - Colby (19-63)
3-pt made	11 - Coffeyville, Friends JV	0 - Clarendon
3-pt attempts	30 - Coffeyville	8 - Clarendon
3-pt percentage	61.1 - Friends JV (11-18)	0.0 - Clarendon (0-8)
FT made	31 - McCook	8 - Colby
FT attempts	48 - Pratt	15 - Allen County
FT percentage	83.8 - McCook (31-37)	39.1 - Seward County (9-23)
Rebounds	54 - Weatherford, Clarendon	26 - Colby
Personal Fouls	25 - Weatherford	14 - McCook
Assists	27 - Sterling College JV	8 - Seward County
Turnovers	28 - Clarendon	11 - Highland
Blocked shots	13 - Barton	1 - Fort Scott
Steals	19 - Friends JV	2 - Highland
	<b>OPPONENT TEAM HIGHS</b>	<b>OPPONENT TEAM LOWS</b>
Points scored	90 - Coffeyville	45 - Sterling College JV
One half	47 - Clarendon, Highland	20 - Pratt
FG made	34 - Butler	18 - Sterling College JV, Kansas City
FG attempts	91 - Clarendon	48 - Dodge City
FG percentage	52.1 - Dodge City (25-48)	28.4 - Pratt (25-88)
3-pt made	11 - Coffeyville	2 - Clarendon
3-pt attempts	31 - Highland	9 - Dodge City
3-pt percentage	46.7 - Allen County (7-15)	10.7 - Pratt (3-28)
FT made	19 - Coffeyville, Barton	5 - Sterling College JV
FT attempts	29 - Garden City	10 - Sterling College JV
FT percentage	94.4 - Seward County (17-18)	35.3 - Kansas City (6-17)
Rebounds	48 - Colby	27 - Highland
Personal Fouls	31 - Cloud County	14 - St. Mary JV
Assists	17 - McCook, Allen County, Coffeyville, Butler	8 - Barton, Cloud County
Turnovers	31 - Sterling College JV	7 - Highland
Blocked shots	6 - Labette, Garden City, Barton	0 - Sterling College JV, Highland, Butler
Steals	18 - Seward County	3 - Highland

## 2008-09 Team Game-by-Game Comparisons

	Pts	FG-FGA	Pct.	3FG/3FGA	Pct.	FT-FTA	Pct.	O-D	Reb.	PF	A	TO	BS	S
at Hutchinson	86	31-70	44.3	6-24	25.0	18-22	81.8	16-33	49	17	19	16	4	12
U. of St. Mary JV	54	20-61	32.8	7-24	29.2	7-11	63.6	9-25	34	14	12	25	1	11
at Hutchinson	79	26-64	45.3	4-17	23.5	17-37	45.9	20-31	51	18	21	16	4	10
Labette	57	19-66	28.8	3-18	16.7	16-23	69.6	20-26	46	28	10	20	6	8
at Hutchinson	102	39-65	60.0	10-22	45.5	14-29	48.3	17-26	43	18	27	12	7	18
Sterling College JV	45	18-51	35.3	4-13	30.8	5-10	50.0	11-18	29	23	10	31	0	7
at Hutchinson	81	32-66	48.5	7-16	43.8	10-17	58.8	16-30	46	15	19	14	1	6
Fort Scott	62	23-65	35.4	4-19	21.1	12-17	70.6	13-22	35	15	12	13	4	6
at Hutchinson	97	37-67	55.2	5-14	35.7	18-31	58.1	19-35	54	25	26	20	5	6
Weatherford	68	24-67	35.8	4-26	15.4	16-28	57.1	14-32	32	24	10	12	3	8
Hutchinson	79	28-55	50.9	7-15	46.7	16-28	57.1	10-31	41	17	16	21	6	11
at Allen County	53	20-56	35.7	6-24	25.0	7-14	50.0	10-24	34	26	13	22	5	12
at Hutchinson	88	30-62	48.4	0-8	0.0	28-38	73.7	16-38	54	18	17	28	6	7
Clarendon	78	32-91	35.2	2-18	11.1	12-20	60.0	25-21	46	28	14	18	5	15
at Hutchinson	68	18-58	31.0	1-14	7.1	31-37	83.8	15-26	41	14	9	10	6	3
McCook	70	28-63	44.4	5-21	23.8	9-17	52.9	12-29	41	16	17	12	3	5
at Hutchinson	79	25-55	47.3	9-19	47.4	18-28	64.3	15-30	45	19	19	11	5	2
Highland	72	23-57	40.4	10-31	32.3	16-23	69.6	7-20	27	20	13	7	0	3
at Hutchinson	70	22-55	40.0	8-24	33.3	18-3	78.3	11-21	32	17	12	19	6	7
Allen County	72	28-57	49.1	7-15	46.7	9-18	50.0	13-25	38	19	17	19	4	8
Hutchinson	86	29-68	42.6	11-30	36.7	17-22	77.3	22-23	45	22	16	16	4	5
vs. Coffeyville	90	30-64	46.9	11-26	42.6	19-28	67.9	17-21	38	23	17	13	2	7
Hutchinson	78	30-59	50.8	6-14	42.9	12-19	63.2	15-34	49	16	16	15	6	9
vs. Kansas City	48	18-58	21.0	6-30	20.0	6-17	35.3	13-19	32	15	12	15	4	8
at Hutchinson	96	37-74	50.0	10-22	45.5	12-19	63.2	16-31	47	20	23	14	8	10
Central Nebraska	73	26-77	33.8	6-23	26.1	15-20	75.0	23-24	47	19	14	20	1	4
Hutchinson	94	34-66	51.5	11-18	61.1	15-27	55.6	19-23	42	15	24	20	5	19
Friends University JV	55	21-58	36.2	3-16	18.8	10-11	90.9	13-21	34	24	14	30	1	10
at Hutchinson	76	26-60	43.3	4-15	26.7	20-26	76.9	18-27	45	17	8	25	3	8
Seward County	69	26-72	36.1	4-21	19.0	13-17	76.5	22-20	42	18	12	19	1	18
Hutchinson	86	34-53	64.2	6-10	60.0	12-17	70.6	7-32	39	17	17	18	3	4
at Dodge City	74	30-71	42.3	6-14	42.9	8-14	57.1	13-15	28	16	9	8	1	10
at Hutchinson	82	25-56	44.6	5-12	41.7	27-42	64.3	21-29	50	21	11	21	5	8
Garden City	80	26-66	39.4	10-27	37.0	18-29	62.1	17-20	37	29	14	13	6	15
Hutchinson	60	21-48	43.8	2-13	15.4	16-27	59.3	10-18	28	18	17	23	7	9
at Butler	86	34-72	47.2	6-18	33.3	12-16	75.0	22-24	46	24	17	16	0	15
at Hutchinson	74	25-60	41.7	3-14	21.4	21-30	70.0	9-37	46	18	15	21	13	7
Barton	70	23-73	31.5	5-19	26.3	19-23	82.6	15-30	45	25	8	19	6	12
Hutchinson	50	19-63	30.2	4-25	16.0	8-16	50.0	17-26	43	17	12	28	5	9
at Colby	73	27-67	40.3	5-13	38.5	14-19	73.7	16-32	48	15	9	19	4	17
at Hutchinson	83	25-47	53.2	5-12	41.7	28-48	58.3	11-41	52	18	12	24	9	6
Pratt	66	25-88	28.4	3-28	10.7	13-19	68.4	25-22	47	29	11	13	3	15
Hutchinson	70	21-41	51.2	5-13	38.5	23-39	59.0	5-31	36	20	13	21	5	4
at Cloud County	71 (OT)	27-67	40.3	6-23	26.1	11-21	52.4	16-25	41	31	8	16	3	8
Hutchinson	58	25-52	42.3	5-16	31.3	9-23	39.1	15-22	37	18	13	25	3	6
at Seward County	82	28-50	50.0	9-17	52.9	17-18	94.4	6-21	27	19	18	14	3	16
at Hutchinson	68	18-50	36.0	5-18	27.8	27-41	65.9	16-19	35	24	9	22	3	17
Dodge City	71	25-48	52.1	3-9	33.3	18-26	69.2	7-24	31	29	16	24	3	8
Hutchinson	77	27-57	47.4	5-16	31.3	18-27	66.7	12-21	33	17	18	15	3	7
at Garden City	79	32-67	47.8	6-18	33.3	9-18	50.0	19-22	41	20	19	16	3	7
at Hutchinson														
Butler														
Hutchinson														
at Barton														
at Hutchinson														
Colby														
Hutchinson														
at Pratt														
at Hutchinson														
Cloud County														

## 2008-09 Blue Dragon Player Season Recaps



### Darius Johnson-Odom

Height - 6-2  
Year - Freshman  
Position - Guard  
Hometown - Raleigh, N.C.

#### Johnson-Odom's Season Highs

Points	46	- Coffeyville
Field Goals	14	- Coffeyville
Field Goal Attempts	26	- Coffeyville
3-Pointers	8	- Coffeyville
3-Point Attempts	17	- Coffeyville
Free Throws	14	- Pratt
Free-Throw Attempts	19	- Pratt
Rebounds	15	- Highland
Assists	9	- 2 times (last vs. Central Nebraska)
Blocked Shots	3	- 2 times (last vs. Pratt)
Steals	4	- 2 times (last vs. Friends JV)
Minutes Played	40:00	- McCook

Opponent	FG-A	3Pt-A	FT-A	Pts	OR	DR	TR	PF	A	TO	B	S	Min
St. Mary JV*	9-14	2-5	0-0	20	0	2	2	1	3	4	0	2	28:59
Labette*	5-13	1-4	3-5	14	0	9	9	2	8	7	1	3	33:21
Sterling JV*	5-8	3-6	2-3	15	1	2	3	3	5	1	0	3	20:10
Fort Scott*	7-15	3-6	6-9	23	3	3	6	2	5	1	0	0	32:57
Weatherford*	5-10	0-2	6-8	16	1	6	7	2	6	4	0	0	29:21
Allen County*	8-14	0-3	9-10	25	0	7	7	0	9	4	2	2	31:45
Clarendon*	7-15	0-3	3-8	17	2	5	7	4	6	9	0	2	38:50
McCook*	5-16	1-5	13-13	24	0	3	3	3	2	2	0	0	40:00
Highland*	8-14	3-4	3-6	22	2	13	15	3	6	3	1	1	34:47
Allen County*	10-22	5-12	5-5	30	0	5	5	1	2	2	0	4	36:38
Coffeyville*	14-26	8-17	10-10	46	2	7	9	1	4	5	0	1	38:50
Kansas City*	12-17	3-7	5-6	32	3	7	10	2	3	4	0	1	31:52
Central Nebraska*	8-16	2-5	2-2	20	3	6	9	3	9	4	3	3	29:33
Friends University JV*	9-14	0-1	4-8	22	4	0	4	3	4	3	0	4	25:01
Seward County*	7-15	2-5	5-6	21	1	3	4	0	4	5	0	1	39:30
Dodge City*	9-16	2-4	4-4	24	1	7	8	2	7	6	1	1	33:09
Garden City*	7-10	2-3	12-12	28	3	4	7	4	2	5	1	2	34:49
Butler*	1-9	0-5	4-6	6	0	2	2	3	8	5	1	2	35:22
Barton*	3-12	0-4	9-10	15	0	2	2	3	8	7	2	2	37:59
Colby*	1-8	0-5	1-3	3	1	2	3	1	2	4	1	3	30:29
Pratt*	10-15	3-5	14-19	37	0	3	3	2	3	6	3	0	35:58
Cloud County*	3-5	2-4	2-4	10	0	0	0	4	3	3	0	0	19:01
Seward County*	4-11	3-6	3-5	14	2	4	6	3	4	6	0	0	26:35
Dodge City*	5-10	3-7	11-11	24	2	3	5	4	4	5	0	2	32:15
Garden City*	6-13	3-7	8-9	23	0	2	2	5	3	5	1	0	33:27

Butler  
Barton  
Colby  
Pratt  
Cloud County  
\* - Indicates Started Game



### Devon McBride

Height - 6-3  
Year - Sophomore  
Position - Guard  
Hometown - Richmond, VA

#### McBride's Season Highs

Points	24	- Butler
Field Goals	9	- Butler
Field Goal Attempts	17	- Colby
3-Pointers	4	- Sterling JV
3-Point Attempts	7	- 3 times (last vs. Colby)
Free Throws	10	- Pratt
Free-Throw Attempts	12	- Labette
Rebounds	7	- Colby
Assists	4	- Clarendon
Blocked Shots	1	- 5 times (last vs. Colby)
Steals	1	- 4 times (last Pratt)
Minutes Played	34:04	- Clarendon

Opponent	FG-A	3Pt-A	FT-A	Pts	OR	DR	TR	PF	A	TO	B	S	Min
St. Mary JV*	4-7	1-4	3-4	12	1	2	3	4	0	1	0	0	14:52
Labette*	3-10	2-4	6-12	14	2	3	5	2	0	0	0	0	20:24
Sterling JV*	8-13	4-7	3-3	23	1	0	1	2	1	1	0	1	15:30
Fort Scott*	7-16	1-4	1-2	16	1	2	3	0	0	1	0	0	27:44
Weatherford*	4-5	2-2	3-5	13	2	0	2	1	0	3	0	0	22:16
Allen County*	5-11	3-6	1-1	14	1	3	4	1	2	0	1	0	22:28
Clarendon*	5-14	0-2	5-6	15	4	2	6	1	4	2	0	0	34:04
McCook*	3-11	0-3	7-7	13	3	2	5	0	0	0	1	0	28:00
Highland*	5-11	2-6	6-7	18	1	1	2	0	0	1	0	0	25:48
Allen County*	8-15	3-7	4-4	23	3	1	4	2	3	3	1	0	33:22

Coffeyville .....DNP  
Kansas City .....DNP  
Central Nebraska .....5-10 2-5 2-2 14 2 1 3 1 0 1 1 0 17:16  
Friends University JV .....4-11 3-6 0-0 11 2 1 3 2 1 4 0 0 15:45  
Seward County .....5-12 1-2 3-3 14 4 0 4 3 0 3 0 0 21:36  
Dodge City .....1-3 1-1 2-2 5 0 1 1 2 3 1 0 0 15:00  
Garden City .....2-8 0-3 5-6 9 3 3 6 1 1 1 0 0 22:44  
Butler .....9-13 0-1 6-10 24 1 3 4 0 1 0 0 1 30:05  
Barton\* .....3-10 1-3 0-1 7 0 3 3 1 3 1 0 1 18:37  
Colby\* .....8-17 2-7 3-4 21 3 4 7 0 0 3 1 0 27:01  
Pratt\* .....4-6 1-1 6-10 15 0 4 4 1 1 3 0 1 25:14  
Cloud County .....DNP  
Seward County .....DNP  
Dodge City .....DNP  
Garden City .....DNP  
Butler  
Barton  
Colby  
Pratt  
Cloud County  
\* - Indicates Started Game

## 2008-09 Blue Dragon Player Season Recaps



### Cliff Dixon

Height - 6-9  
Year - Sophomore  
Position - Forward  
Hometown - Suitland, MD

#### Dixon's Season Highs

Points	29	- Garden City
Field Goals	11	- Garden City
Field Goal Attempts	20	- Garden City
3-Pointers	1	- 3 times (last vs. Pratt)
3-Point Attempts	3	- 2 times (last vs. Pratt)
Free Throws	9	- Clarendon
Free-Throw Attempts	12	- 2 times (last vs. Barton)
Rebounds	12	- Weatherford
Assists	5	- Friends JV
Blocked Shots	4	- Garden City
Steals	3	- Friends JV
Minutes Played	30:41	- Garden City

Opponent	FG-A	3PI-A	FT-A	Pts	OR	DR	TR	PF	A	TO	B	S	Min
St. Mary JV	4-9	0-0	5-6	13	4	3	7	2	3	3	1	1	14:10
Labette	8-13	0-1	3-5	19	1	3	4	1	0	4	1	3	26:20
Sterling JV*	8-11	0-0	2-6	18	3	4	7	1	3	0	1	1	20:09
Fort Scott*	5-10	0-1	1-2	11	2	5	7	2	3	2	0	2	23:46
Weatherford*	7-15	1-2	2-4	17	6	6	12	2	4	6	2	3	29:03
Allen County*	5-9	0-0	1-1	11	1	5	6	2	2	5	0	1	26:11
Clarendon*	9-17	0-1	9-12	27	2	5	7	0	4	3	0	2	27:55
McCook*	4-15	0-1	3-4	11	3	4	7	3	0	2	1	0	23:32
Highland	DNP												
Allen County	DNP												
Coffeyville	DNP												
Kansas City	DNP												
Central Nebraska	DNP												
Friends University JV	1-3	0-0	2-6	4	3	5	8	1	5	4	3	3	20:48
Seward County	7-15	0-3	0-0	14	4	6	10	3	0	6	2	2	26:10
Dodge City	8-11	0-1	2-4	18	1	10	11	1	2	2	2	0	23:22
Garden City	3-11	0-0	5-6	11	3	8	11	4	2	5	4	2	30:41
Butler	3-6	1-1	2-3	9	1	1	2	1	0	5	0	0	16:46
Barton	5-9	0-0	7-12	17	2	9	11	3	0	3	3	0	26:43
Colby	5-9	0-1	0-2	10	5	4	9	2	0	6	0	0	16:20
Pratt	3-8	1-3	2-6	9	0	7	7	1	1	4	2	1	19:02
Cloud County	7-10	0-1	10-13	24	1	5	6	4	3	7	1	0	29:59
Seward County	9-17	0-0	3-5	21	2	4	6	1	1	5	1	1	29:29
Dodge City*	6-15	0-0	7-11	19	2	7	9	3	0	5	1	0	36:36
Garden City*	11-20	0-0	7-10	29	2	7	9	1	0	3	1	2	27:42
Butler													
Barton													
Colby													
Pratt													
Cloud County													

\* - Indicates Started Game



### Lazarius 'Ty' Johnson

Height - 6-3  
Year - Freshman  
Position - Guard  
Hometown - Miami, Fla

#### Johnson's Season Highs

Points	13	- Kansas City
Field Goals	5	- 2 times (last vs. Kansas City)
Field Goal Attempts	10	- Garden City
3-Pointers	2	- 4 times (last vs. Garden City)
3-Point Attempts	4	- 2 times (last vs. Garden City)
Free Throws	5	- Allen County
Free-Throw Attempts	5	- Allen County
Rebounds	9	- Fort Scott
Assists	9	- Sterling College JV
Blocked Shots	1	- Highland
Steals	4	- Sterling College JV
Minutes Played	36:35	- Cloud County

Opponent	FG-A	3PI-A	FT-A	Pts	OR	DR	TR	PF	A	TO	B	S	Min
St. Mary JV*	1-6	0-3	4-4	6	0	4	4	1	6	0	0	1	28:08
Labette*	5-8	0-1	1-3	11	0	2	2	2	3	3	0	1	28:30
Sterling JV*	1-4	0-2	1-2	3	0	2	2	1	9	1	0	4	22:24
Fort Scott*	3-5	2-2	0-0	8	1	8	9	3	5	5	0	2	35:21
Weatherford*	3-5	1-2	0-1	7	1	4	5	2	3	0	0	0	28:20
Allen County*	2-3	0-1	0-0	4	0	4	4	4	2	3	0	1	20:37
Clarendon	DNP												
McCook	DNP												
Highland	1-5	1-3	0-2	3	0	5	5	3	6	1	1	1	27:59
Allen County*	2-5	0-1	5-5	9	0	4	4	3	3	5	0	1	35:12
Coffeyville*	1-6	0-3	0-0	2	0	2	2	4	1	3	0	1	27:50
Kansas City*	5-7	2-3	1-3	13	0	1	1	1	4	3	0	0	28:26
Central Nebraska*	3-6	2-4	1-4	9	1	3	4	3	4	3	0	0	25:56
Friends University JV*	2-3	0-0	0-0	4	1	2	3	3	7	3	0	1	29:00
Seward County*	0-2	0-2	4-4	4	0	0	0	2	1	1	0	0	17:22
Dodge City*	2-4	1-2	0-0	5	0	3	3	0	2	2	0	0	21:18
Garden City*	4-10	2-4	0-0	10	0	3	3	2	1	5	0	1	21:43
Butler*	2-3	0-1	0-0	4	0	1	1	3	1	3	0	2	19:29
Barton	0-0	0-0	0-0	0	0	0	0	1	0	1	0	0	7:06
Colby	0-5	0-2	0-0	0	1	6	7	3	0	2	0	0	17:32
Pratt	3-5	0-0	0-0	6	1	5	6	2	3	5	0	1	31:39
Cloud County*	1-2	1-1	4-6	7	0	3	3	2	2	1	0	0	36:35
Seward County*	1-8	1-4	0-0	3	0	2	2	3	1	1	0	0	18:38
Dodge City*	1-8	1-5	1-2	4	0	0	0	2	0	4	0	1	30:24
Garden City	2-4	0-2	0-1	4	1	2	3	1	4	2	0	1	23:42
Butler													
Barton													
Colby													
Pratt													
Cloud County													

\* - Indicates Started Game

## 2008-09 Blue Dragon Player Season Recaps



### Javari Williams

Height - 6-3  
 Year - Redshirt Freshman  
 Position - Forward  
 Hometown - Brampton, Ontario, Canada

#### Williams' Season Highs

Points.....12 - 2 times (last vs. Dodge City)  
 Field Goals .....5 - St. Mary JV  
 Field Goal Attempts.....13 - 2 times (last vs. Coffeyville)  
 3-Pointers .....0  
 3-Point Attempts.....1 - 4 times (last vs. Butler)  
 Free Throws.....5 - Kansas City  
 Free-Throw Attempts .....8 - 2 times (last vs. Dodge City)  
 Rebounds.....7 - 2 times (last vs. Dodge City)  
 Assists .....7 - Weatherford  
 Blocked Shots .....2 - Allen County  
 Steals .....5 - Sterling College JV  
 Minutes Played .....37:56 - Coffeyville

Opponent	FG-A	3Pt-A	FT-A	Pts	OR	DR	TR	PF	A	TO	B	S	Min
St. Mary JV	5-13	0-1	0-2	10	4	3	7	1	0	4	0	1	20:20
Labette	3-7	0-0	0-4	6	4	2	6	1	1	0	0	0	17:21
Sterling JV	4-5	0-0	2-5	10	2	2	4	1	1	1	0	5	18:16
Fort Scott	DNP												
Weatherford	4-4	0-0	4-8	12	1	4	5	4	7	2	0	1	25:20
Allen County	3-3	0-0	0-5	6	0	2	2	2	0	1	2	1	18:18
Clarendon	1-3	0-1	1-2	3	2	3	5	3	1	6	1	0	15:08
McCook	1-3	0-0	0-0	2	0	1	1	0	2	1	1	2	21:27
Highland	4-5	0-0	2-2	10	2	3	5	3	0	3	1	0	22:46
Allen County	1-5	0-1	2-4	4	1	3	4	2	1	1	0	1	23:13
Coffeyville*	4-13	0-2	1-2	9	7	6	13	3	5	1	1	2	37:56
Kansas City*	2-5	0-0	5-7	9	2	5	7	0	2	0	0	4	26:31
Central Nebraska	1-4	0-0	3-5	5	1	0	1	2	1	0	0	0	12:47
Friends University JV	1-2	0-0	0-0	2	0	0	0	0	0	0	0	0	2:26
Seward County	1-2	0-0	1-2	3	1	4	5	0	0	1	0	3	12:52
Dodge City*	0-0	0-0	1-2	1	1	2	3	2	1	1	0	1	21:58
Garden City	2-2	0-0	0-6	4	3	1	4	2	1	0	0	0	13:40
Butler	0-1	0-1	1-4	1	1	0	1	0	1	1	0	1	13:48
Barton	1-2	0-0	1-2	3	0	2	2	0	0	0	1	0	18:09
Colby	0-3	0-0	3-4	3	2	1	3	3	1	4	0	3	23:49
Pratt	0-0	0-0	1-2	1	0	1	1	1	0	0	0	0	7:55
Cloud County	2-3	0-0	2-2	6	1	1	2	1	1	2	1	2	36:35
Seward County	1-2	0-1	1-5	3	1	4	5	4	0	1	0	2	29:00
Dodge City	4-6	0-0	4-8	12	5	2	7	4	2	2	0	4	31:34
Garden City*	1-2	0-0	2-2	4	4	0	4	1	3	2	0	0	23:14
Butler													
Barton													
Colby													
Pratt													
Cloud County													

\* - Indicates Started Game



### Tom Shirley

Height - 6-8  
 Year - Freshman  
 Position - Forward  
 Hometown - Grantville, KS

#### Shirley's Season Highs

Points.....19 - Weatherford  
 Field Goals.....8 - Weatherford  
 Field Goal Attempts .....10 - 2 times (last vs. Cloud County)  
 3-Pointers .....4 - Allen County  
 3-Point Attempts .....5 - Cloud County  
 Free Throws.....5 - McCook  
 Free-Throw Attempts .....8 - McCook  
 Rebounds .....12 - Labette  
 Assists.....4 - Friends University JV  
 Blocked Shots .....3 - 2 times (Sterling College JV)  
 Steals .....2 - 5 times (last vs. Barton)  
 Minutes Played .....34:05 - Barton

Opponent	FG-A	3Pt-A	FT-A	Pts	OR	DR	TR	PF	A	TO	B	S	Min
St. Mary JV*	2-3	0-0	4-4	8	1	5	6	2	2	1	3	2	21:24
Labette*	3-5	0-0	1-2	7	6	6	12	3	2	1	0	2	24:55
Sterling JV*	2-3	0-0	1-4	5	3	6	9	2	1	2	3	0	22:43
Fort Scott*	0-3	0-0	0-0	0	1	4	5	3	1	0	0	1	20:44
Weatherford*	8-10	1-1	2-3	19	2	3	5	1	2	2	2	0	26:04
Allen County*	5-7	4-4	0-1	14	0	1	1	2	0	2	1	0	23:18
Clarendon*	3-5	0-0	2-2	8	2	7	9	4	1	2	1	0	33:35
McCook*	3-6	0-2	5-8	11	4	3	7	4	0	2	1	0	21:19
Highland*	1-3	0-1	2-3	4	2	0	2	3	1	0	0	0	19:07
Allen County*	1-4	0-2	1-2	3	0	1	1	4	2	0	1	0	24:12
Coffeyville*	3-9	1-4	4-4	11	5	2	7	4	1	2	0	0	26:38
Kansas City*	2-8	1-2	0-0	5	1	3	4	1	2	1	1	1	27:56
Central Nebraska*	6-8	2-3	2-2	16	2	5	7	0	2	1	1	1	25:07
Friends University JV	3-7	2-5	3-4	11	0	5	5	0	4	0	1	2	26:44
Seward County*	1-3	1-2	2-2	5	0	7	7	4	1	2	1	0	28:09
Dodge City*	3-3	1-1	2-2	9	1	3	4	3	0	0	0	1	28:03
Garden City*	2-5	1-2	2-2	7	3	1	4	4	2	3	0	2	21:13
Butler*	1-3	1-2	0-0	3	2	2	4	2	2	3	1	0	13:45
Barton*	6-12	1-4	0-0	13	0	8	8	2	0	1	0	2	34:05
Colby*	1-7	1-3	0-0	3	1	2	3	1	3	1	1	0	15:17
Pratt	2-4	0-1	1-2	5	2	3	5	5	1	1	0	1	24:42
Cloud County*	4-10	2-5	0-1	10	0	2	2	3	2	0	1	1	26:01
Seward County*	1-5	0-3	0-0	2	0	1	1	2	1	4	0	0	15:48
Dodge City	DNP												
Garden City	3-9	1-5	0-0	7	1	5	6	4	1	0	0	1	24:09
Butler													
Barton													
Colby													
Pratt													
Cloud County													

\* - Indicates Started Game

## 2008-09 Blue Dragon Player Season Recaps



### Cody Beaton

Height - 6-3  
Year - Freshman  
Position - Guard  
Hometown - Hutchinson, KS

#### Beaton's Season Highs

Points	14	- Friends JV
Field Goals	4	- Friends JV
Field Goal Attempts	4	- Friends JV
3-Pointers	4	- Friends JV
3-Point Attempts	4	- 2 times (last vs. Friends JV)
Free Throws	2	- Friends JV
Free-Throw Attempts	2	- 3 times (last vs. Friends JV)
Rebounds	2	- Labette
Assists	3	- Labette
Blocked Shots	0	
Steals	0	
Minutes Played	11:50	- Kansas City

Opponent	FG-A	3Pt-A	FT-A	Pts	OR	DR	TR	PF	A	TO	B	S	Min
St. Mary JV	1-1	1-4	0-0	3	0	0	0	0	0	0	0	0	8:58
Labette	0-1	0-1	1-2	1	1	1	2	0	3	0	0	0	7:54
Sterling JV	1-2	1-2	0-0	3	0	0	0	0	1	2	0	0	10:18
Fort Scott	2-2	0-0	0-0	4	0	0	0	0	0	0	0	0	2:16
Weatherford	0-1	0-0	0-0	0	1	0	1	1	0	0	0	0	2:03
Allen County	0-0	0-0	0-2	0	0	0	0	0	0	0	0	0	2:25
Clarendon	DNP												
McCook	DNP												
Highland	DNP												
Allen County	DNP												
Coffeyville	DNP												
Kansas City	0-1	0-0	0-0	0	1	0	1	1	2	2	0	0	11:50
Central Nebraska	2-3	2-3	0-0	6	0	1	1	0	0	0	0	0	5:52
Friends University JV	4-4	4-4	2-2	14	0	1	1	0	1	0	0	0	8:15
Seward County	DNP												
Dodge City	DNP												
Garden City	DNP												
Butler	0-0	0-0	0-0	0	0	0	0	0	0	0	0	0	1:23
Barton	DNP												
Colby	1-3	1-3	0-0	3	0	1	1	1	0	0	0	0	7:26
Pratt	0-0	0-0	0-0	0	0	0	0	0	0	0	0	0	0:32
Cloud County	0-0	0-0	0-0	0	0	0	0	1	0	0	0	0	3:19
Seward County	0-0	0-0	0-0	0	0	1	1	0	0	0	0	0	1:56
Dodge City	0-1	0-1	0-1	0	0	1	1	0	1	0	0	0	2:32
Garden City	0-0	0-0	0-0	0	0	0	0	0	0	0	0	0	0:02
Butler													
Barton													
Colby													
Pratt													
Cloud County													
* - Indicates Started Game													



### Chris Banks

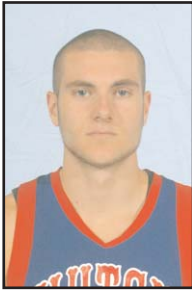
Height - 6-2  
Year - Sophomore  
Position - Guard  
Hometown - Fort Scott, KS

#### Banks' Season Highs

Points	4	- 4 times (last vs. Dodge City)
Field Goals	2	- 3 times (last vs. Colby)
Field Goal Attempts	4	- Friends JV
3-Pointers	0	
3-Point Attempts	2	- Kansas City
Free Throws	2	- Dodge City
Free-Throw Attempts	3	- Dodge City
Rebounds	5	- Kansas City
Assists	3	- Colby
Blocked Shots	0	
Steals	4	- Friends JV
Minutes Played	25:58	- Garden City

Opponent	FG-A	3Pt-A	FT-A	Pts	OR	DR	TR	PF	A	TO	B	S	Min
St. Mary JV	DNP												
Labette	DNP												
Sterling JV	DNP												
Fort Scott	DNP												
Weatherford	DNP												
Allen County	DNP												
Clarendon	DNP												
McCook	DNP												
Highland	0-0	0-0	0-0	0	0	0	0	0	0	0	0	0	4:26
Allen County	0-0	0-0	0-0	0	0	1	1	0	1	2	0	0	9:51
Coffeyville	0-0	0-0	0-0	0	0	0	0	1	0	0	0	0	4:42
Kansas City	1-3	0-0	1-2	3	2	3	5	2	0	0	0	0	17:13
Central Nebraska*	2-2	0-0	0-0	4	0	2	2	0	0	1	0	2	25:45
Friends University JV*	2-4	0-0	0-1	4	0	1	1	0	2	0	0	4	20:04
Seward County*	0-2	0-1	0-0	0	1	0	1	2	2	1	0	1	22:24
Dodge City	0-0	0-0	0-0	0	1	0	1	1	1	1	0	0	17:29
Garden City*	0-0	0-0	1-2	1	0	4	4	3	2	0	0	0	25:58
Butler*	0-0	0-0	2-2	2	0	1	1	2	2	1	0	0	18:05
Barton*	0-0	0-0	0-0	0	0	1	1	2	3	2	0	0	22:13
Colby	2-2	0-0	0-1	4	0	3	3	5	3	3	0	2	24:09
Pratt*	0-0	0-0	0-0	0	1	2	3	1	0	1	0	1	15:05
Cloud County*	1-2	0-0	0-1	2	0	2	2	1	1	1	0	0	19:52
Seward County*	0-0	0-0	0-0	0	0	1	1	0	1	2	0	1	19:13
Dodge City*	1-2	0-1	2-4	4	0	0	0	2	0	1	0	1	18:55
Garden City*	0-0	0-0	0-0	0	1	0	1	1	3	0	0	0	21:33
Butler													
Barton													
Colby													
Pratt													
Cloud County													
* - Indicates Started Game													

## 2008-09 Blue Dragon Player Season Recaps



### Austin Bond

Height - 6-5  
Year - Sophomore  
Position - Guard  
Hometown - Kansas City, KS

#### Bond's Season Highs

Points	12 - Friends JV
Field Goals	4 - Friends JV
Field Goal Attempts	6 - St. Mary JV
3-Pointers	2 - 3 times (last vs. Friends JV)
3-Point Attempts	4 - 2 times (last vs. Highland)
Free Throws	6 - Clarendon
Free-Throw Attempts	6 - Clarendon
Rebounds	6 - St. Mary JV (1 times last vs. McCook)
Assists	4 - 2 times (last vs. Garden City)
Blocked Shots	5 - Barton
Steals	3 - Garden City
Minutes Played	30:33 - McCook

Opponent	FG-A	3Pt-A	FT-A	Pts	OR	DR	TR	PF	A	TO	B	S	Min
St. Mary JV	2-6	1-4	0-0	5	2	4	6	2	4	1	0	2	21:34
Labette	2-4	1-3	2-3	7	1	0	1	1	1	1	1	1	13:25
Sterling JV	3-4	2-3	1-2	9	0	2	2	2	1	0	3	2	19:51
Fort Scott	3-5	1-3	0-0	7	0	1	1	1	1	3	0	1	17:51
Weatherford	1-4	0-3	1-2	3	0	1	1	3	2	2	0	1	13:55
Allen County	0-3	0-1	0-0	0	1	3	4	1	0	1	0	1	24:17
Clarendon*	2-3	0-0	6-6	10	0	4	4	2	0	2	1	1	29:16
McCook*	1-3	0-2	0-0	2	2	4	6	1	5	1	2	1	30:33
Highland*	2-5	2-4	0-0	6	0	0	0	2	3	0	0	0	28:32
Allen County	DNP												
Coffeyville	2-4	2-4	0-0	6	0	0	0	2	2	0	1	0	20:43
Kansas City	0-1	0-1	0-0	0	0	0	0	0	0	2	0	0	18:49
Central Nebraska	0-4	0-2	0-0	0	0	1	1	3	3	0	0	1	17:59
Friends University JV	4-5	2-2	2-2	12	0	2	2	0	0	2	0	2	21:55
Seward County	0-0	0-0	0-0	0	0	0	0	0	0	1	0	0	7:36
Dodge City	1-1	1-1	0-0	3	0	1	1	2	0	1	0	0	9:36
Garden City	0-0	0-0	0-0	0	0	0	0	0	0	0	0	0	4:00
Butler	0-1	0-1	0-0	0	0	0	0	0	0	0	1	0	8:46
Barton	1-5	1-3	4-4	7	0	3	3	2	1	1	5	1	19:20
Colby	0-4	0-4	0-0	0	0	0	0	1	1	1	2	1	13:16
Pratt	0-2	0-2	0-0	0	0	1	1	3	0	0	0	0	6:50
Cloud County	1-3	0-2	0-0	2	0	3	3	2	1	1	0	0	25:13
Seward County	1-2	1-2	0-0	3	0	0	0	0	2	2	0	0	13:02
Dodge City	1-5	1-4	0-0	3	1	1	2	3	1	2	1	1	20:09
Garden City	1-4	1-2	0-0	3	0	0	0	1	4	1	0	3	21:37
Butler													
Barton													
Colby													
Pratt													
Cloud County													

\* - Indicates Started Game



### Dominique Rutledge

Height - 6-8  
Year - Freshman  
Position - Forward  
Hometown - Newark, N.J.

#### Rutledge's Season Highs

Points	22 - Central Nebraska
Field Goals	10 - Central Nebraska
Field Goal Attempts	18 - Central Nebraska
3-Pointers	0
3-Point Attempts	0
Free Throws	5 - 2 times (last vs. Cloud County)
Free-Throw Attempts	12 - Cloud County
Rebounds	13 - 2 times (last vs. Cloud County)
Assists	3 - Pratt
Blocked Shots	4 - 3 times (last vs. Pratt)
Steals	3 - 2 times (last vs. Central Nebraska)
Minutes Played	32:31 - Pratt

Opponent	FG-A	3Pt-A	FT-A	Pts	OR	DR	TR	PF	A	TO	B	S	Min
St. Mary JV	DNP												
Labette	DNP												
Sterling JV	5-9	0-0	0-2	10	4	2	6	3	0	2	0	2	16:36
Fort Scott	4-7	0-0	0-2	8	4	3	7	0	2	1	1	0	21:48
Weatherford	4-9	0-0	0-0	8	2	6	8	3	1	0	1	0	9:47
Allen County	0-4	0-0	2-4	2	1	5	6	2	1	3	0	3	19:27
Clarendon	3-4	0-0	2-2	8	3	4	7	2	0	2	3	1	15:11
McCook	1-3	0-2	0-0	2	1	3	4	2	0	2	0	0	14:17
Highland	3-9	0-0	3-6	9	4	2	6	3	2	1	1	0	21:33
Allen County*	0-3	0-0	1-3	1	3	3	6	2	0	5	4	0	23:21
Coffeyville*	4-9	0-0	2-6	10	6	4	10	3	2	5	2	0	30:53
Kansas City*	7-14	0-0	0-1	14	4	6	10	4	1	3	4	1	25:39
Central Nebraska*	10-18	0-0	2-4	22	3	6	9	4	1	3	2	3	24:21
Friends University JV*	4-11	0-0	2-4	10	6	3	9	3	0	3	1	1	19:08
Seward County*	5-9	0-0	5-9	15	7	6	13	3	0	4	0	1	24:21
Dodge City*	9-13	0-0	1-3	19	0	5	5	2	0	4	0	1	24:36
Garden City*	5-10	0-0	2-8	12	3	3	6	1	0	1	0	1	25:12
Butler*	3-8	0-1	1-2	7	3	4	7	3	0	3	2	1	30:10
Barton*	6-10	0-0	0-1	12	4	6	10	4	0	5	2	1	15:48
Colby*	1-4	0-0	1-2	3	2	1	3	0	1	2	0	0	18:08
Pratt*	3-7	0-0	4-9	10	6	8	14	2	3	4	4	1	32:31
Cloud County*	2-5	0-0	5-12	9	2	11	13	1	0	5	2	0	26:59
Seward County*	2-4	0-0	2-7	6	6	3	9	3	0	2	2	2	27:07
Dodge City*	0-3	0-0	2-4	2	3	1	4	2	1	3	1	2	20:21
Garden City*	3-5	0-0	1-5	7	1	3	4	2	0	1	1	0	21:49
Butler													
Barton													
Colby													
Pratt													
Cloud County													

\* - Indicates Started Game

## 2008-09 Blue Dragon Player Season Recaps



### Ryan Douvier

Height - 6-5  
Year - Sophomore  
Position - Forward  
Hometown - Newton, KS

#### Douvier's Season Highs

Points .....6 - 3 times (last vs. Seward County)  
Field Goals .....3 - Seward County  
Field Goal Attempts .....6 - St. Mary JV  
3-Pointers .....0  
3-Point Attempts .....2 - Labette  
Free Throws .....3 - Allen County  
Free-Throw Attempts.....4 - Allen County  
Rebounds .....10 - St. Mary JV  
Assists .....4 - Sterling College JV  
Blocked Shots .....2 - Butler  
Steals .....2 - 4 times (last vs. Butler)  
Minutes Played .....24:06 - St. Mary JV

Opponent	FG-A	3PI-A	FT-A	Pts	OR	DR	TR	PF	A	TO	B	S	Min
St. Mary JV*	2-6	0-1	2-2	6	3	7	10	4	0	1	0	2	24:06
Labette*	0-2	0-2	0-0	0	1	2	3	4	2	0	1	0	11:24
Sterling JV	2-5	0-1	2-2	6	3	5	8	2	4	1	0	0	20:32
Fort Scott	1-3	0-0	0-0	2	1	2	3	4	2	1	0	0	13:42
Weatherford	1-2	0-0	0-0	2	0	1	1	4	0	0	0	0	6:21
Allen County	0-1	0-0	3-4	3	3	1	4	3	0	1	0	2	8:29
Clarendon	0-0	0-0	0-0	0	0	1	1	2	0	1	0	1	3:50
McCook	0-1	0-1	2-2	2	1	2	3	1	0	0	0	0	9:52
Highland*	1-1	0-0	2-2	4	2	3	5	1	1	1	1	0	10:28
Allen County	0-1	0-1	0-0	0	0	2	2	3	0	0	0	1	14:11
Coffeyville	1-1	0-0	0-0	2	1	1	2	4	1	0	0	1	12:28
Kansas City	1-3	0-0	0-0	2	1	4	5	5	0	2	0	2	11:44
Central Nebraska	0-3	0-0	0-0	0	0	5	5	2	3	1	1	0	15:24
Friends University JV	0-2	0-0	0-0	0	1	1	2	3	0	1	0	2	10:54
Seward County	DNP												
Dodge City	1-2	0-0	0-0	2	1	0	1	2	1	0	0	0	5:29
Garden City	DNP												
Butler	2-4	0-0	0-0	4	1	2	3	4	2	2	2	2	12:21
Barton	DNP												
Colby	0-1	0-0	0-0	0	0	1	1	0	1	0	0	0	6:41
Pratt	0-0	0-0	0-0	0	0	0	0	0	0	0	0	0	0:32
Cloud County	0-1	0-0	0-0	0	0	0	0	1	0	1	0	1	3:35
Seward County	3-3	0-0	0-1	6	1	2	3	2	3	1	0	0	9:12
Dodge City	0-0	0-0	0-0	0	1	0	1	4	0	0	0	0	7:19
Garden City	0-0	0-0	0-0	0	0	1	1	0	0	0	0	0	2:45

Butler  
Barton  
Colby  
Pratt  
Cloud County  
\* - Indicates Started Game