

# Hutchinson Community College

# BLUE DRAGONS

## 2008-09 Men's Basketball Game Notes

Blue Dragon Media Relations - (620) 664-3593  
Media Contact - Steve Carpenter, Sports Information Director

Release Date - November 5, 2008  
Athletic web site - [www.hutchcc.edu/dragons](http://www.hutchcc.edu/dragons)

### 2008 GRAND PRAIRIE HOTEL CLASSIC



#### Game 3: No. 20 Hutchinson (2-0) vs. Sterling College JV (0-2)

Date: Thursday, November 6, 2008 Tipoff: 7:30 p.m.  
Site: Hutchinson Sports Arena (Capacity - 7,000)  
Radio: KHUT-FM (102.9), 7:20 p.m. airtime  
Internet: [www.hutchcc.edu/dragons](http://www.hutchcc.edu/dragons) (live radio, stats)



#### Game 4: No. 20 Hutchinson vs. Fort Scott (1-0)

Date: Friday, November 7, 2008 Tipoff: 7:30 p.m.  
Site: Hutchinson Sports Arena (Capacity - 7,000)  
Radio: KHUT-FM (102.9), 7:20 p.m. airtime  
Internet: [www.hutchcc.edu/dragons](http://www.hutchcc.edu/dragons) (live radio, stats)



#### Game 5: No. 20 Hutchinson vs. Weatherford College (0-2)

Date: Saturday, November 8, 2008 Tipoff: 7:30 p.m.  
Site: Hutchinson Sports Arena (Capacity - 7,000)  
Radio: KHUT-FM (102.9), 7:20 p.m. airtime  
Internet: [www.hutchcc.edu/dragons](http://www.hutchcc.edu/dragons) (live radio, stats)



### BLUE DRAGONS OPEN BUSY STRETCH WITH THREE-DAY GRAND PRAIRIE HOTEL CLASSIC

The 20th-ranked Hutchinson Community College men's basketball team will open a stretch of six games in 10 days with the three-day Grand Prairie Hotel Classic starting Thursday at the Sports Arena.

HCC (2-0) will play the Sterling College Junior Varsity on Thursday, Jayhawk East rival Fort Scott on Friday and Weatherford College on Saturday. All games times are scheduled for 7:30 p.m.

HCC comes off a pair of lopsided victories in last weekend's Quarterback Classic.

In each of those games, there were four Blue Dragons scoring in double figures.

#### 2008 CLASSIC SCHEDULE

Thursday, November 6  
5:30 p.m. - Weatherford vs. Fort Scott  
7:30 p.m. - Hutchinson vs. Sterling JV  
Friday, November 7  
3:30 p.m. - Weatherford vs. Sterling JV  
7:30 p.m. - Hutchinson vs. Fort Scott  
Saturday, November 8  
3:30 p.m. - Fort Scott vs. Sterling JV  
7:30 p.m. - Hutchinson vs. Weatherford

HCC head coach Ryan Swanson enters the weekend with 48 coaching victories. With three more wins, Swanson will move into 10th place on the HCC coaching list.

### 2008-09 BLUE DRAGON SCHEDULE

Date	Opponent	Time/Result
<b>QUARTERBACK CLASSIC</b>		
Oct. 31	U. of St. Mary Junior Varsity	W, 86-54
Nov. 1	Labette	W, 79-57
<b>GRAND PRAIRIE HOTEL CLASSIC</b>		
Nov. 6-8	Sterling College JV	7:30 p.m.
Nov. 7	Fort Scott	7:30 p.m.
Nov. 8	Weatherford College	7:30 p.m.
Nov. 11	at Allen County	7 p.m.
<b>AIRPORT STEAKHOUSE CLASSIC</b>		
Nov. 14-15	Clarendon College	7:30 p.m.
Nov. 14	McCook	7:30 p.m.
Nov. 15	Highland	7 p.m.
Nov. 22	Allen County	7 p.m.
Nov. 25	Friends University JV	7 p.m.
Dec. 2	JAYHAWK SHOOTOUT at Coffeyville	
Dec. 5	vs. Coffeyville	7 p.m.
Dec. 3	vs. Kansas City	3 p.m.
Dec. 13	Central Nebraska	7:30 p.m.
Jan. 3	Seward County	7:30 p.m.
Jan. 7	at Dodge City	7:30 p.m.
Jan. 10	Garden City	7:30 p.m.
Jan. 14	at Butler	7:30 p.m.
Jan. 21	Barton	8 p.m.
Jan. 25	at Colby	4 p.m.
Jan. 28	Pratt	7:30 p.m.
Jan. 31	at Cloud County	8 p.m.
Feb. 2	at Seward County	8 p.m.
Feb. 4	Dodge City	7:30 p.m.
Feb. 7	at Garden City	8 p.m.
Feb. 11	Butler	7:30 p.m.
Feb. 18	at Barton	8 p.m.
Feb. 21	Colby	7:30 p.m.
Feb. 25	at Pratt	8 p.m.
Feb. 28	Cloud County	7:30 p.m.
Mar. 4	Region VI First Round at TBA	
Mar. 7-9	Region VI Tournament at Wichita	

### 2008-09 BLUE DRAGON NUMERICAL ROSTER

No.	Name	Pos	Ht.	Yr.	Hometown (Previous school)	Worth Noting
3	Darius Johnson-Odom	G	6-2	Fr.	Raleigh, NC (Wakefield HS)	Just missed triple double vs. Labette - 14 pts, 9 rebs, 8 assts.
10	Caydrick Bloomquist	G	6-0	Fr.	Emporia, KS (Emporia HS)	Drilled first shot as a Blue Dragon, 3-pointer vs. USM JV.
15	Devon McBride	G	6-3	So.	Richmond, VA (Binghamton U.)	Transfer from Binghamton University; averaging 13 points per game.
21	Cliff Dixon	F	6-10	So.	Suitland, MD (Motlow State CC)	Transfer from Motlow State CC; averaging 16 points per game.
22	Lazarus Johnson	G	6-3	Fr.	Miami, FL. (Miami Senior HS)	Tied for team lead in assists with 11 helpers.
23	Javari Williams	F	6-5	R-Fr.	Brampton, Ontario (St. Joseph HS)	Had 10 points, 7 rebs. in HCC debut vs. USM JV after redshirting.
24	Tom Shirley	F	6-7	Fr.	Grantville, KS (Jefferson West HS)	Posted team season high 12 rebounds against Labette on 11/1.
25	Cody Beaton	G	6-0	Fr.	Hutchinson, KS (Buhler HS)	Beaton played tennis for the Blue Dragons in the spring of 2008.
33	Austin Bond	G	6-0	So.	Kansas City, KS (Piper HS)	Played in 13 games as a freshman, averaged 2.9 ppg.
34	Dominique Rutledge	F	6-8	Fr.	Newark, NJ (Edison Academy)	Didn't play in the first two games of the season because of injury.
42	Ryan Douvier	F	6-6	So.	Newton, KS (Newton HS)	First start, Douvier scored 6 pts. with 10 rebs., 2 steals vs. USM. JV
RS	Everson Lacerda	C	6-11	So.	Belo Horizonte, Brazil (Colby CC)	Transfer from Colby; will redshirt in the 2008-09 season.

## RYAN SWANSON FILE

Ryan Swanson is in his third season as Blue Dragon head coach. The Hutchinson native and former HCC player is the Blue Dragons' 13th head coach in 77 seasons of basketball.

HCC is the fourth head coaching stop - all at the junior college level - in Swanson's career. Swanson is 184-74 in eight-plus seasons as a juco head coach. He is now 48-17 at HCC. He is three victories away from moving past Tim Duryea into 10th place on the HCC career coaching list.

Swanson is now 11th on the Blue Dragon coaching chart for victories. He is the seventh HCC head coach to win 20 games in each of his first two seasons.

Swanson was the 12th straight HCC head coach to win 20 games in his first season. He led the Blue Dragons to a 23-8 record in 2006-07. Last season, Swanson guided the Blue Dragons to a 23-9 record and a second-place finish in the Jayhawk West, plus a quarterfinal berth in the Region VI Tournament.

Swanson was 74-24 in three seasons at St. Catharine's College, 16-14 in one season at Marshalltown, Iowa and 46-19 in two seasons at Garden City. Swanson led the 2004-05 Garden City team to its first conference championship in more than 50 years.

Swanson also has NCAA Division I coaching experience as an assistant at the University of Wisconsin-Milwaukee for Bruce Pearl (who is now at Tennessee).

Swanson's 2002-03 UWM team went 24-8, won the Horizon League crown and earned a trip to the NCAA Tournament for the first time in the school's 107-year history. UWM was a No. 12-seed and just missed upsetting No. 5-seed Notre Dame 70-69.

Swanson, who graduated from Hutchinson High School, was a redshirt on the Blue Dragons' 1988 NJCAA national championship team, played in 1989 and was a graduate assistant for head coach David Farrar in 1990.

### SWANSON - BY THE NUMBERS

Career record (8th season) .....	184-74
Record at HCC (3rd season).....	48-17
Record at Sports Arena .....	37-5
Record on opposing floors.....	7-11
Record on neutral courts .....	4-1
Record vs. Jayhawk West teams .....	21-11
Record vs. Jayhawk East teams .....	9-4
Record vs. Non-conference teams .....	19-2
Record vs. Nationally ranked teams .....	8-4
Record in Jayhawk Shootout.....	4-0
Record in Region VI Tournament .....	1-2
Record in overtime games.....	1-1
Record in games of 9 points or less .....	15-6
Record in games of 10 points or more .....	33-11

## DRAGONS NO. 3 IN NJCAA IN ALL-TIME WINS

With a 79-53 victory over Labette on Nov. 1, 2008, the Blue Dragons became only the third NJCAA program to post 1,500 victories.

Now the third-winningest program in junior college basketball history, the Blue Dragons are 1,500-522, a winning percentage of .742.

With a 63-46 victory over river Butler Community College on Jan. 28, 2004, the Blue Dragons posted victory No. 1,400.

The Blue Dragons trail only Southeastern Iowa and Moberly Area, Mo., in all-time wins. Southeastern Iowa became the first NJCAA program to win 1,500 games in the 2007-08 season.

### NJCAA ALL-TIME WINS

1. Southeastern Iowa .....	1,521
2. Moberly .....	1,506
3. Hutchinson .....	1,500
4. Vincennes .....	1,440

## DRAGONS IN NATIONAL POLL

For only the fourth time since 2001, the Blue Dragons have started a season ranked in the NJCAA preseason poll. HCC opens the 2008-09 season ranked No. 20. It's the second-straight season HCC starts ranked in the preseason.

The 2007-08 Blue Dragons opened ranked 26th. HCC was unranked in 2005. The 2003 poll had HCC starting 26th and the 2004 poll had HCC 13th. They were unranked in 2002 and 2001.

When the first regular-season poll comes out in late November, only 20 teams will be ranked.

## SERIES HISTORIES WITH GRAND PRAIRIE HOTEL CLASSIC FOES

● **Sterling College JV** - This will be the 19th meeting between Hutch and Sterling, but it's only the third time that the Blue Dragons have played the junior varsity program. HCC is 13-5 all-time vs. Sterling, but the two meetings vs. the Warrior JV hasn't been close - 108-55 in 2003 and 66-21 in 2006.

● **Fort Scott** - This will be the 42nd meeting with the Greyhounds. HCC has a 28-13 lead in the series, but has dominated since 1970. HCC has won five straight games and has won 18 of the last 19 games played. The only blemish in that run was a 77-61 Greyhound victory at the 1999 Jayhawk Shootout.

● **Weatherford College** - This will be just the second meeting between Hutchinson and Weatherford College. The only other time that the Blue Dragons and Coyotes have met came in HCC's national championship season of 1988. Hutchinson defeated the Coyotes 71-54.

## Quarterback Classic Rosters

### HUTCHINSON BLUE DRAGONS (2-0)

No.	Player	Pos.	Ht.	Yr.	Hometown
3	Darius Johnson-Odom	G	6-2	Fr.	Raleigh, NC
10	Caydrick Bloomquist	G	6-0	Fr.	Emporia, KS
15	Devon McBride	G	6-3	So.	Richmond, VA
21	Cliff Dixon	F	6-10	So.	Suitland, MD
22	Lazarus Johnson	G	6-3	Fr.	Miami, FL
23	Javari Williams	F	6-5	R-Fr.	Brampton, Ontario
24	Tom Shirley	F	6-7	Fr.	Grantville, KS
25	Cody Beaton	G	6-0	Fr.	Hutchinson, KS
33	Austin Bond	G	6-0	So.	Kansas City, KS
34	Dominique Rutledge	F	6-8	Fr.	Newark, NJ
42	Ryan Douvier	F	6-6	So.	Newton, KS

Head Coach - Ryan Swanson

Assistant Coaches - Dave Brown, Ryan Freeberg

### STERLING COLLEGE JV WARRIORS (0-2)

No.	Player	Pos.	Ht.	Yr.	Hometown
3	Aparicio Turpeau	G	6-1	Fr.	Lake Charles, LA
5	Michael Bassett	G	5-11	Fr.	Leavenworth, KS
10	Mike Benitez	G	5-9	Fr.	Orlando, FL
11	Sam Downe	G	5-9	So.	Tennessee Colony, TX
20	Brian Boarman	G	6-1	So.	Leavenworth, TX
21	Matt Jaderston	G	6-0	So.	Sterling KS
23	Zach Yarbrough	F	6-2	Sr.	Apple Valley, MN
32	Ryan Felder	G	6-1	Sr.	Waukomis, OK
31	Diego Ferro	F	6-6	So.	Panama City, Panama
33	Kenneth Eddy	G	6-2	Fr.	Ellsworth, KS
34	Kendrick Babineaux	G	6-1	Fr.	Houston, TX
40	Ryan DeBey	G	6-4	Fr.	Cawker City, KS
41	Travis Minton	C	6-10	So.	Sand Spring, OK

Head Coach - Sean Gillespie

### FORT SCOTT GREYHOUNDS (1-0)

No.	Player	Pos.	Ht.	Yr.	Hometown
2	Kolbe Jones	G	6-3	Fr.	Leawood, KS
3	Kurklin Bohanon	G	6-2	Fr.	Cleveland, OH
5	Bryce Kemp	G	6-0	Fr.	Oklahoma City, OK
11	Brandon Dougherty	G	5-9	So.	Leavenworth, KS
12	Zack Wilson	G	5-10	Fr.	Baxter Springs, KS
13	Ramell Taylor	F	6-5	Fr.	Detroit, MI
14	Eric Kellogg	G	6-2	Fr.	Kansas City, KS
20	Justin Greene	G	6-0	Fr.	Mansfield, OH
21	Tyrone Weaver	F	6-3	Fr.	Hickory, NC
22	Conrad Brown	G	5-10	So.	Kansas City, KS
23	Darrell Blanton	F	6-2	Fr.	Euclid, OH
33	Matt Leal	F	6-4	Fr.	Spring Hill, KS

Head Coach - Mike Cook

Assistants - Jaunc Bradshaw

### WEATHERFORD COLLEGE COYOTES (0-2)

No.	Player	Pos.	Ht.	Yr.	Hometown
10	J.D. Lane	G	5-11	So.	Houston, TX
11	Kendall Durant	G	6-2	Fr.	Washington, D.C.
12	Jonathan Banks	G	5-11	So.	Weatherford, TX
13	Matt Lowe	G	6-2	So.	Waxahachie, TX
14	Chancellor Lewis	G	6-1	Fr.	Houston, TX
15	Mike Behrens	F	6-6	So.	Houston, TX
20	Curtis Bowen	G	5-10	So.	Houston, TX
21	De'Angelo Robinson	G	6-0	So.	Roanoke, VA
23	Marcus Brister	G	6-3	So.	Duncanville, TX
25	Tyler Hull	G	6-2	So.	Peaster, TX
30	Patrick Rubenkoenig	F	6-6	Fr.	Azele, TX
31	Kellen Wilson	F	6-6	So.	Cleveland, OH
32	Aron Walker	F	6-10	Fr.	Uppsala, Sweden
33	Matt Moody	G	6-2	Fr.	Mansfield, TX

Head Coach - Dave Donnelly

Assistants - Larry Holman

## RECAPPING THE 2008 QUARTERBACK CLASSIC

● **St. Mary JV** - Darius Johnson-Odom had quite a debut, scoring 20 points in the Blue Dragons' season-opening 86-54 victory over the University of St. Mary Junior Varsity.

Johnson-Odom was 9 of 14 from the field, with a pair of 3-pointers, but he had several dunks that made Blue Dragon fans take notice.

After a sluggish first 3 1/2 minutes, the Blue Dragons finally started to click. After trailing by five points early, HCC went on a 23-4 run over an 8-minute span to grab control.

Sophomore Ryan Douvier also had a memorable first HCC start. After seeing limited playing time as a freshman, Douvier was a workhorse for HCC, scoring six points and pulling down a career-high 10 rebounds.

For the game, HCC shot 44.3 percent from the field (31 of 70). HCC was just 6 of 24 from the 3-point line and hit 18 of 22 from the free-throw line (81.8 percent). HCC also had a decisive 49-34 rebounding advantage.

Sophomore Cliff Dixon had 12 points and seven rebounds in just 14 minutes off the bench. Sophomore Devon McBride finished with 12 points in his HCC debut. Redshirt freshman Javari Williams finished with 10 points and seven boards.

Freshman Lazarius Johnson had six points and a game-high six assists.

The Blue Dragons held USM (0-1) to 32.8 percent (20 of 61) overall, but just 26.7 percent in the first half (8 of 30). The Spires hit 7 of 24 from long range and were 7 of 11 from the free-throw line. USM committed 25 turnovers. Justin Crutchfield had 19 points and Derek Weatherly had 10 for the Spires.

● **Labette** - Sophomore Cliff Dixon led four Blue Dragons in double figures with 19 points as HCC survived a huge first-half Labette run in a 79-57 victory over the Cardinals.

The Blue Dragons join Southeastern Iowa and Moberly as the only NJCAA teams with 1,500 victories.

The Blue Dragons finished the game shooting 45.3 percent (29 of 64) for the game.

After going 0 of 6 from long range in the first half, HCC was 4 of 17 from the 3-point line.

Hutch struggled from the free-throw line against Labette, shooting just 17 of 37 from the stripe. The Dragons outrebounded Labette 51-45.

Devon McBride and Darius Johnson-Odom finished with 14 points each. Johnson-Odom just missed a triple-double, finishing with nine rebounds and eight assists.

Freshman Lazarius Johnson had 11 points.

Shirley finished with seven points and a game-high 12 rebounds.

The Dragons limited Labette to 28.8 percent overall shooting (19 of 66) and forced 20 turnovers. The Cardinals were 3 of 18 from 3-point range and 16 of 23 from the free-throw line. Kendall Driver had 12 points to lead Labette.

### SERIES HISTORIES

#### Sterling College JV

Record - 13-5

Date	Site	Result
12/14/31	Hutch	L, 26-27
1/12/32	Sterling	W, 28-14
1/34	Sterling	W, 38-15
2/34	Hutch	W, 22-12
12/18/34	Sterling	L, 30-32
2/23/35	Hutch	W, 32-16
1/20/36	Sterling	W, 46-25
2/25/36	Hutch	W, 43-20
2/1/38	Sterling	W, 20-17
2/22/38	Hutch	W, 43-27
2/7/39	Hutch	L, 29-31
2/39	Sterling	W, 35-28
12/42	Hutch	W, 35-27
1/43	Sterling	W, 46-13
12/68	Hutch	L, 73-76
2/69	Sterling	L, 83-93
12/30/03	Hutch	W, 108-55
1/4/06	Hutch	W, 66-21

#### Fort Scott

Record - 28-13

In Hutchinson - HCC leads 12-3  
 At Sports Arena - HCC leads 8-0  
 In Fort Scott - Fort Scott leads 5-6  
 Neutral Court - Fort Scott leads 1-0  
 Region VI - HCC leads 5-0  
 Other postseason - Series tied 2-2  
 Jayhawk Shootout - HCC leads 5-1

Date	Site	Result
2/8/29	Fort Scott	L, 27-42
3/9/29	Baldwin (N)	L, 21-22
1/17/30	Fort Scott	W, 30-27
2/14/30	Hutch	L, 27-30
2/23/31	Fort Scott	L, 19-20
3/3/32	Hutch	W, 16-15
2/24/33	Fort Scott	W, 22-21
2/34	Hutch	L, 20-22
2/12/35	Fort Scott	L, 22-35
2/21/36	Hutch	L, 16-32
3/1/37	Fort Scott	L, 24-32
12/22/28	Hutch	W, 36-28
3/3/39	Hutch	W, 39-33*
3/9/39	Fort Scott	L, 34-52*
3/10/39	Fort Scott	W, 32-21*
12/15/39	Fort Scott	W, 32-26
12/13/40	Hutch	W, 45-29
12/12/41	Fort Scott	W, 39-17
12/46	Fort Scott	L, 25-36
3/47	Fort Scott	L, 54-55*
12/47	Hutch	W, 46-45
1/48	Fort Scott	L, 33-44
1/70	Fort Scott	W, 95-74
2/72	Hutch	W, 92-90
3/72	(R6)	W, 90-77
3/73	(R6)	W, 86-72
12/83	Hutch	W, 90-57
12/89	Shootout	W, 65-39
12/90	Shootout	W, 94-73
11/91	Hutch	W, 76-43
12/93	Shootout	W, 85-78
12/95	Shootout	W, 75-59
12/96	Hutch	W, 77-59
11/15/97	Hutch	W, 91-76
11/21/98	Hutch	W, 78-62
12/5/99	Shootout	L, 61-77
3/3/00	(R6)	W, 98-78
11/16/02	Hutch	W, 96-82
3/5/03	(R6)	W, 78-72
12/8/07	Shootout	W, 79-45
3/4/08	(R6)	W, 85-61

\* - State championship playoff

#### Weatherford College

Record - 1-0

Date	Site	Result
11/19/87	Hutch	W, 71-54

## Jayhawk Conference Men's Standings

Jayhawk West	League	Overall
Hutchinson	0-0	2-0
Butler	0-0	2-0
Seward County	0-0	2-0
Cloud County	0-0	1-0
Garden City	0-0	1-0
Pratt	0-0	1-0
Dodge City	0-0	0-0
Barton	0-0	0-0
Colby	0-0	0-1

Jayhawk East	League	Overall
Cowley College	0-0	2-0
Coffeyville	0-0	1-0
Fort Scott	0-0	1-0
Neosho County	0-0	1-0
Labette	0-0	1-2
Highland	0-0	0-0
Independence	0-0	0-0
Johnson County	0-0	0-0
Allen County	0-0	0-1
Kansas City	0-0	0-2

Through Wednesday, Nov. 5

## 2008-09 NJCAA Division I Basketball Preseason Poll

Team	2007-08 Record
1. Indian Hills CC, Iowa	28-10
2. Chipola College, Fla.	35-2
3. Midland College, Texas	28-4
4. Walters State CC, Tenn.	32-3
5. Cowley College	31-3
6. Arkansas-Fort Smith	28-4
7. San Jacinto College, Texas	23-9
8. College of Southern Idaho	30-2
9. Georgia Perimeter College	23-12
10. Mineral Area College, Mo.	19-12
11. Salt Lake CC, Utah	32-4
12. Itawamba CC, Miss.	30-4
13. Southeastern Illinois	28-7
14. Shelton State CC, Ala.	25-12
15. Northeastern Junior College, Colo.	30-4
16. Paris Junior College, Texas	30-7
17. Vincennes University, Ind.	28-6
18. South Plains College, Texas	30-5
19. Northwest Florida State	27-4
20. Hutchinson CC	23-9
21. Aiken Technical College, S.C.	28-6
22. Iowa Western CC	28-5
23. Wallace State CC, Ala.	32-1
24. Southwestern Illinois	21-9
25. Arizona Western College	26-4
26. Seminole State College, Okla.	21-9
27. Monroe College N.Y.	24-8
28. Kennedy-King College, Ill.	27-5
29. Coffeyville CC	24-9
30. North Dakota State College of Science	25-6

Others receiving votes: Brunswick College, N.C. (28-5); Casper College, Wyo. (20-12); Cloud County CC (21-12); Hagerstown CC, Md. (22-8); Harcum College (26-3); Howard College, Texas (25-8); John A. Logan College, Ill. (18-14); Miami-Dade College, Fla. (18-9); Mississippi Gulf Coast (15-12); Northern Oklahoma-Enid (19-14); Odessa College, Texas (27-5); Pearl River CC, Fla. (21-7); Snead State CC, Ala. (24-7); South Georgia Technical College (20-12); Three Rivers CC, Mo. (28-9); Truitt-McConnel College, Ga. (21-11); Tyler Junior College, Texas (25-4); Western Nebraska (16-15).

## HOME COOKING GOOD TO BLUE DRAGONS

The Blue Dragons have always enjoyed a strong home-court advantage in the 7,000-seat Sports Arena. With their 70-60 victory over Cloud County on Jan. 14, 2006, the Blue Dragons earned their 700th regular-season victory in the famed basketball venue.

Moving into the Sports Arena in the 1952-53 season, the Blue Dragons have amassed a 740-131 record in this building.

In the 53 years that Hutchinson has called the Sports Arena home; the Blue Dragons have averaged 13.1 wins at home. The 2007-08 team went 17-3 at home.

They went undefeated through an entire home season seven times (1958-59, 1959-60, 1973-74, 1974-75, 1981-82, 1987-88, 2003-04).

Before the Sports Arena, HCC played at Memorial (Convention) Hall from 1928 to 1952 where the Blue Dragons were 112-50.

## SEASON-OPENING SUCCESS

The Blue Dragons have been hard to beat on opening night over the years.

Hutchinson is 59-19 in season openers, winning 11 of the last 12 opening games.

Hutchinson is 64-14 in home openers.

The highest point total for HCC on opening night was 115 points scored against Joliet Junior College in a 115-103 victory in 1977. Hutch has surpassed the century mark five times on opening night: 102 vs. York College in 1965; 115 vs. Joliet in 1977, 101 vs. Western Nebraska in 1990, 107 vs. Malcolm X I 1997 and 100 vs. Malcolm X in 1998.

The largest opening night winning margin was 58 set in 1992, an 88-32 win over Hesston College.

## 2008-09 BLUE DRAGONS BRING BACK LITTLE EXPERIENCE

Even in Ryan Swanson's first season two years ago at HCC he had more returning experience than he does heading into the 2008-09 season.

The Dragons start as the preseason favorite to win the Jayhawk Conference Western Division and are ranked 20th in the preseason NJCAA Division I men's basketball poll.

Only two players return with court time with the Blue Dragons from last season.

Those two players – guard Austin Bond and forward Ryan Douvier – played a combined total of 246 minutes.

Bond is a 6-foot-3 guard from Kansas City, Kan. (Piper High School). His freshman season was extremely limited because of injuries. In 13 games, Bond averaged 2.9 points, shooting 31.3 percent from 3-point range.

Douvier is a 6-6 forward from Newton. He saw limited playing time as a freshman, averaging 0.6 points and 0.6 rebounds.

Swanson will have a pair of talented transfers and a group of untested freshmen to try and lead the Blue Dragons to their first Jayhawk West championship since 2004 and the first Region VI crown since 1997.

## NOTING THE BLUE DRAGONS

- Tom Shirley is the nephew of former Iowa State standout Paul Shirley.
- The last time that Hutchinson allowed 100 points in a game was Jan. 24, 2004, when the Dragons gave up triple digits in a 100-94 loss to Barton County. That's a streak of 235 games.

## JAYHAWK WEST PRESEASON PREDICTIONS

The Blue Dragons were picked to win the 2009 Jayhawk West championship in a poll of league coaches released at the annual Jayhawk Conference Media Day on Oct. 13 in Wichita.

Hutchinson, Cloud County and Barton were the top three picked by the coaches.

Last season, HCC was picked to finish second in the preseason poll.

Cowley College was the prohibitive favorite to win the Jayhawk East in 2009.

### 2008-09 JAYHAWK WEST PREDICTIONS

1. Hutchinson
2. Cloud County
3. Barton
4. Garden City
5. Seward County
6. Dodge City
7. Pratt
8. Butler
9. Colby

## BLUE DRAGON FAMILY LOSES ONE OF ITS GREATS - CORTEZ BARNES

Cortez Barnes, one of the top 3-point shooters and all-around players in HCC men's basketball history, died in a car accident in Texas on Sept. 21, 2008.

Barnes, an All-Jayhawk Conference performer who played at HCC in 1990-91 and 1991-92, was on his way to Wichita from his home in Dallas when the accident occurred.

Barnes, 36, and his wife, Jamai, had six children.

Barnes came to HCC before the 1990-91 season for coach Dave Farrar after a stellar prep career at Wichita Heights.

## Miscellaneous Statistics

Record at home .....	2-0
Record on road .....	0-0
Record on neutral courts .....	0-0
Largest margin of victory .....	32
Largest margin of defeat.....	0
Largest lead surrendered in loss .....	0
Largest halftime lead surrendered in loss .....	0
Largest deficit overcome to win .....	5
Largest halftime deficit overcome to win .....	0
Record when ahead at halftime .....	2-0
Record when behind at halftime .....	0-0
Record when tied at halftime.....	0-0
Record when shooting 50 pct. or better .....	0-0
Record when shooting less than 50 pct.....	2-0
Record when opp. shoots 50 pct. or better .....	0-0
Record when opp. shoots less than 50 pct. ....	2-0
Record when outshooting opponent .....	2-0
Record when outshot by opponent .....	0-0
Record when outrebounding opponent.....	2-0
Record when outrebounded by opponent .....	0-0
Record when rebounding is even .....	0-0
Record in overtime.....	0-0
Record when scoring 80 points or more.....	1-0
Record when scoring 79 points or fewer .....	1-0
Record when allowing 80 points or more .....	0-0
Record when allowing 79 points or fewer.....	2-0
Times HCC scores 100 points or more .....	0
Times HCC scores 90-99 points .....	0
Times HCC scores 80-89 points .....	1
Times HCC scores 70-79 points .....	1
Times HCC scores 60-69 points .....	0
Times HCC scores 50-59 points .....	0
Times HCC scores 40-49 points .....	0
Times HCC scores 30-39 points .....	0
Times HCC scores 29 points or fewer .....	0
Times HCC shoots 60 percent or better .....	0
Times HCC shoots 50 to 59 percent .....	0
Times HCC shoots 40 to 49 percent .....	2
Times HCC shoots 30 to 39 percent .....	0
Times HCC shoots 29 percent or less .....	0
Times opponent scores 100 points or more .....	0
Times opponent scores 90-99 points .....	0
Times opponent scores 80-89 points .....	0
Times opponent scores 70-79 points .....	0
Times opponent scores 60-69 points .....	0
Times opponent scores 50-59 points .....	2
Times opponent scores 40-49 points .....	0
Times opponent scores 30-39 points .....	0
Times opponent scores 29 points or fewer .....	0
Times opponent shoots 60 percent or better .....	0
Times opponent shoots 50 to 59 percent.....	0
Times opponent shoots 40 to 49 percent.....	0
Times opponent shoots 30 to 39 percent.....	1
Times opponent shoots 29 percent or less .....	1

## 2008-09 Blue Dragon Men's Basketball Game-By-Game Review

Date	Opponent	Score	Record (JC)	Points	Rebounds	Assists	Steals
Oct. 31	U. of St.Mary JV*	W, 86-54	1-0	20 - Johnson-Odom	10 - Douvier	6 - Johnson	4 - 2 tied
Nov. 1	Labette*	W, 79-57	2-0	19 - Dixon	12 - Shirley	8 - Johnson-Odom	3 - Johnson-Odom, Dixon
Nov. 6	Sterling College JV^						
Nov. 7	Fort Scott^						
Nov. 8	Wetherford College^						
Nov. 11	Allen County						
Nov. 14	Clarendon College#						
Nov. 15	McCook#						
Nov. 22	Highland						
Nov. 25	Allen County						
Dec. 2	Friends University JV						
Dec. 5	Coffeyville+						
Dec. 7	Kansas City+						
Dec. 13	Central Nebraska						
Jan. 3	Seward County						
Jan. 7	Dodge City						
Jan. 10	Garden City						
Jan. 14	Butler						
Jan. 21	Barton						
Jan. 25	Colby						
Jan. 28	Pratt						
Jan. 31	Cloud County						
Feb. 2	Seward County						
Feb. 4	Dodge City						
Feb. 7	Garden City						
Feb. 11	Butler						
Feb. 18	Barton						
Feb. 21	Colby						
Feb. 25	Pratt						
Feb. 28	Cloud County						

\* - Quarterback Classic; ^ - Grand Prairie Classic; # - Airport Steakhouse Classic; + - Jayhawk Shootout at Coffeyville

### Record by Starting Lineup

Johnson-Odom, McBride, Johnson, Shirley, Douvier.....2-0

### Blue Dragon Season Double-Doubles

NAME (season - 0; career 0)

Date vs. Opponent.....0 points; 0 rebounds

### Blue Dragon Win/Loss Margin

Margin	Win	Loss	11	12	13	14	15	16	17	18	19	20	20+
1	0	0	0	0	0	0	0	0	0	0	0	0	0
2	0	0	0	0	0	0	0	0	0	0	0	0	0
3	0	0	0	0	0	0	0	0	0	0	0	0	0
4	0	0	0	0	0	0	0	0	0	0	0	0	0
5	0	0	0	0	0	0	0	0	0	0	0	0	0
6	0	0	0	0	0	0	0	0	0	0	0	0	0
7	0	0	0	0	0	0	0	0	0	0	0	0	0
8	0	0	0	0	0	0	0	0	0	0	0	0	0
9	0	0	0	0	0	0	0	0	0	0	0	0	0
10	0	0	2	0	0	0	0	0	0	0	0	0	0

### Blue Dragon Season 20-Point Games

20 - Darius Johnson-Odom vs. St. Mary JV .....Oct. 31, 2008

### Blue Dragon Season 10-Rebound Games

12 - Tom Shirley vs. Labette .....Nov. 1, 2008  
 10 - Ryan Douvier vs. St. Mary Jv .....Oct. 31, 2008

## 2008-09 Blue Dragon Individual/Team Superlatives

Points Scored	<b>HCC INDIVIDUAL HIGH</b> 20 - Darius Johnson-Odom vs. USM JV - 10/31	<b>OPPONENT INDIVIDUAL HIGH</b> 19 - Justin Crutchfield, USM JV - 10/31
Field Goals	9 - Darius Johnson-Odom vs. USM JV - 10/31	8 - Justin Crutchfield, USM JV - 10/31
Field Goal Attempts	14 - Darius Johnson-Odom vs. USM JV - 10/31	8 - Justin Crutchfield, USM JV - 10/31
Field goal Pct. (min. 5 att.)	64.3 - Darius Johnson-Odom vs. USM JV - 10/31 (9-14)	44.4 - Justin Crutchfield, USM JV - 10/31 (8-18)
3-Pointers	2 - Darius Johnson-Odom vs. USM JV - 10/31 2 - Devon McBride vs. Labette - 11/1	2 - Justin Crutchfield, USM JV - 10/31 2 - Derron Wooton, USM JV - 10/31 2 - Larry Barber, Labette - 11/1 8 - Derron Wooton, USM JV - 10/31
3-Point Attempts	5 - Darius Johnson-Odom vs. USM JV - 10/31 5 - Caydrick Bloomquist vs. USM JV - 10/31	
3-Point Pct. (min. 3 att.)	40.0 - Darius Johnson-Odom vs. USM JV - 10/31 (2-5)	28.6 - Justin Crutchfield, USM JV - 10/31 28.6 - Larry Barber, Labette - 11/1
Free Throws	6 - Devon McBride vs. Labette - 11/1	4 - Kendall Driver, Labette - 11/1 4 - Kyle Reed, Labette - 11/1
Free-Throw Attempts	12 - Devon McBride vs. Labette - 11/1	7 - Kendall Driver, Labette - 11/1
Free-Throw Pct. (min. 5 att.)	83.3 - Cliff Dixon - 1/31 (5-6)	57.1 - Kendall Driver, Labette - 11/1 (4-7)
Rebounds	12 - Tom Shirley vs. Labette - 11/1	12 - Kyle Reed, Labette - 11/1
Assists	8 - Darius Johnson-Odom vs. Labette - 11/1	4 - Derek Weatherly, USM JV - 10/31 4 - Larry Barber, Labette - 11/1 2 - Ross Newton, Labette - 11/1 2 - Sean Farrior, USM JV - 10/31 2 - Justin Crutchfield, USM JV - 10/31 2 - Quentin White, USM JV - 10/31 2 - Stedmon Harper, Labette - 11/1 2 - Terry Dawson, Labette - 11/1
Blocked Shots	3 - Tom Shirley vs. USM JV - 10/31	
Steals	3 - Darius Johnson-Odom vs. Labette - 11/1 3 - Cliff Dixon vs. Labette - 11/1	

	<b>HCC TEAM HIGHS</b>	<b>HCC TEAM LOWS</b>
Points scored	86 - St. Mary JV - 10/31	79 - Labette - 11/1
One half	49 - St. Mary JV - 10/31	35 - Labette - 11/1
FG made	31 - St. Mary JV - 10/31	29 - Labette - 11/1
FG attempts	70 - St. Mary JV - 10/31	64 - Labette - 11/1
FG percentage	45.3 - Labette - 11/1 (29-64)	44.3 - St. Mary JV - 10/31 (31-70)
3-pt made	6 - St. Mary JV - 10/31	4 - Labette - 11/1
3-pt attempts	24 - St. Mary JV - 10/31	17 - Labette - 11/1
3-pt percentage	25.0 - St. Mary JV - 10/31 (6-24)	23.5 - Labette - 11/1
FT made	18 - St. Mary JV - 10/31	17 - Labette - 11/1
FT attempts	37 - Labette - 11/1	22 - St. Mary JV - 10/31
FT percentage	81.8 - St. Mary JV - 10/31 (18-22)	45.9 - Labette - 11/1 (17-37)
Rebounds	51 - Labette - 11/1	49 - St. Mary JV - 10/31
Personal Fouls	18 - Labette - 11/1	17 - St. Mary JV - 10/31
Assists	21 - Labette - 11/1	19 - St. Mary JV - 10/31
Turnovers	16 - St. Mary JV - 10/31; Labette - 11/1	16 - St. Mary JV - 10/31; Labette - 11/1
Blocked shots	4 - St. Mary JV - 10/31; Labette - 11/1	4 - St. Mary JV - 10/31; Labette - 11/1
Steals	12 - St. Mary JV - 10/31	10 - Labette - 11/1

	<b>OPPONENT TEAM HIGHS</b>	<b>OPPONENT TEAM LOWS</b>
Points scored	57 - Labette - 11/1	54 - St. Mary JV - 10/31
One half	33 - St. Mary JV - 10/31	21 - St. Mary JV - 10/31
FG made	20 - St. Mary JV - 10/31	19 - Labette - 11/1
FG attempts	66 - Labette - 11/1	61 - St. Mary JV - 10/31
FG percentage	32.8 - St. Mary JV - 10/31 (20-61)	28.8 - Labette - 11/1 (19-66)
3-pt made	7 - St. Mary JV - 10/31	3 - Labette - 11/1
3-pt attempts	24 - St. Mary JV - 10/31	18 - Labette - 11/1
3-pt percentage	29.2 - St. Mary JV - 10/31 (7-24)	16.7 - Labette - 11/1 (3-18)
FT made	16 - Labette - 11/1	7 - St. Mary JV - 10/31
FT attempts	23 - Labette - 11/1	11 - St. Mary JV - 10/31
FT percentage	69.6 - Labette - 11/1 (16-23)	36.6 - St. Mary JV - 10/31 (7-11)
Rebounds	46 - Labette - 11/1	34 - St. Mary JV - 10/31
Personal Fouls	28 - Labette - 11/1	14 - St. Mary JV - 10/31
Assists	12 - St. Mary JV - 10/31	10 - Labette - 11/1
Turnovers	25 - St. Mary JV - 10/31	20 - Labette - 11/1
Blocked shots	6 - Labette - 11/1	1 - St. Mary JV - 10/31
Steals	11 - St. Mary JV - 10/31	8 - Labette - 11/1

## 2008-09 Blue Dragon Player Season Recaps



### Darius Johnson-Odom

Height - 6-2  
 Year - Freshman  
 Position - Guard  
 Hometown - Raleigh, N.C.

#### Johnson-Odom's Season Highs

Points	.....20	- St. Mary JV
Field Goals	.....9	- St. Mary JV
Field Goal Attempts	.....14	- St. Mary JV
3-Pointers	.....2	- St. Mary JV
3-Point Attempts	.....5	- St. Mary JV
Free Throws	.....3	- Labette
Free-Throw Attempts	.....5	- Labette
Rebounds	.....9	- Labette
Assists	.....8	- Labette
Blocked Shots	.....1	- Labette
Steals	.....3	- Labette
Minutes Played	.....33:21	- Labette

Opponent	.....FG-A	3Pt-A	FT-A	Pts	OR	DR	TR	PF	A	TO	B	S	Min
St. Mary JV*	.....9-14	2-5	0-0	20	0	2	2	1	3	4	0	2	28:59
Labette*	.....5-13	1-4	3-5	14	0	9	9	2	8	7	1	3	33:21
Sterling JV													
Fort Scott													
Weatherford													
Allen County													
Clarendon													
McCook													
Highland													
Allen County													
Friends University JV													
Coffeyville													
Kansas City													
Central Nebraska													
Seward County													
Dodge City													
Garden City													
Butler													
Barton													
Colby													
Pratt													
Cloud County													
Seward County													
Dodge City													
Garden City													
Butler													
Barton													
Colby													
Pratt													
Cloud County													

\* - Indicates Started Game



### Caydrick Bloomquist

Height - 6-0  
 Year - Freshman  
 Position - Guard  
 Hometown - Emporia, KS

#### Bloomquist's Season Highs

Points	.....3	- St. Mary JV
Field Goals	.....1	- St. Mary JV
Field Goal Attempts	.....5	- St. Mary JV
3-Pointers	.....1	- St. Mary JV
3-Point Attempts	.....5	- St. Mary JV
Free Throws	.....0	
Free-Throw Attempts	.....1	- Labette
Rebounds	.....1	- Labette
Assists	.....1	- 2 times (last vs. Labette)
Blocked Shots	.....0	
Steals	.....0	
Minutes Played	.....17:29	- St. Mary JV

Opponent	.....FG-A	3Pt-A	FT-A	Pts	OR	DR	TR	PF	A	TO	B	S	Min
St. Mary JV	.....1-5	1-5	0-0	3	0	0	0	0	1	0	0	1	17:29
Labette	.....0-1	0-1	0-1	0	0	1	1	2	1	0	0	0	16:26
Sterling JV													
Fort Scott													
Weatherford													
Allen County													
Clarendon													
McCook													
Highland													
Allen County													
Friends University JV													
Coffeyville													
Kansas City													
Central Nebraska													
Seward County													
Dodge City													
Garden City													
Butler													
Barton													
Colby													
Pratt													
Cloud County													
Seward County													
Dodge City													
Garden City													
Butler													
Barton													
Colby													
Pratt													
Cloud County													

\* - Indicates Started Game

## 2008-09 Blue Dragon Player Season Recaps



### Devon McBride

Height - 6-3  
 Year - Sophomore  
 Position - Guard  
 Hometown - Richmond, VA

#### McBride's Season Highs

Points.....	14	- Labette
Field Goals .....	4	- St. Mary JV
Field Goal Attempts.....	10	- Labette
3-Pointers .....	2	- Labette
3-Point Attempts .....	4	- 2 times (last vs. Labette)
Free Throws .....	6	- Labette
Free-Throw Attempts.....	12	- Labette
Rebounds .....	5	- Labette
Assists.....	0	- Labette
Blocked Shots .....	0	- Labette
Steals.....	0	- Labette
Minutes Played.....	20:24	- Labette

Opponent .....	FG-A	3Pt-A	FT-A	Pts	OR	DR	TR	PF	A	TO	B	S	Min
St. Mary JV*	4-7	1-4	3-4	12	1	2	3	4	0	1	0	0	14:52
Labette*	3-10	2-4	6-12	14	2	3	5	2	0	0	0	0	20:24
Sterling JV													
Fort Scott													
Weatherford													
Allen County													
Clarendon													
McCook													
Highland													
Allen County													
Friends University JV													
Coffeyville													
Kansas City													
Central Nebraska													
Seward County													
Dodge City													
Garden City													
Butler													
Barton													
Colby													
Pratt													
Cloud County													
Seward County													
Dodge City													
Garden City													
Butler													
Barton													
Colby													
Pratt													
Cloud County													

\* - Indicates Started Game



### Cliff Dixon

Height - 6-9  
 Year - Sophomore  
 Position - Forward  
 Hometown - Suitland, MD

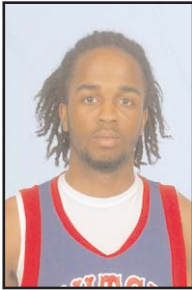
#### Dixon's Season Highs

Points.....	19	- Labette
Field Goals .....	8	- Labette
Field Goal Attempts.....	13	- Labette
3-Pointers .....	0	
3-Point Attempts .....	1	- Labette
Free Throws .....	5	- St. Mary JV
Free-Throw Attempts .....	6	- St. Mary JV
Rebounds .....	7	- St. Mary JV
Assists .....	3	- St. Mary JV
Blocked Shots .....	1	- 2 times (last vs. Labette)
Steals.....	3	- Labette
Minutes Played.....	26:20	- Labette

Opponent .....	FG-A	3Pt-A	FT-A	Pts	OR	DR	TR	PF	A	TO	B	S	Min
St. Mary JV.....	4-9	0-0	5-6	13	4	3	7	2	3	3	1	1	14:10
Labette.....	8-13	0-1	3-5	19	1	3	4	1	0	4	1	3	26:20
Sterling JV													
Fort Scott													
Weatherford													
Allen County													
Clarendon													
McCook													
Highland													
Allen County													
Friends University JV													
Coffeyville													
Kansas City													
Central Nebraska													
Seward County													
Dodge City													
Garden City													
Butler													
Barton													
Colby													
Pratt													
Cloud County													
Seward County													
Dodge City													
Garden City													
Butler													
Barton													
Colby													
Pratt													
Cloud County													

\* - Indicates Started Game

## 2008-09 Blue Dragon Player Season Recaps



### Lazarius 'Ty' Johnson

Height - 6-3  
Year - Freshman  
Position - Guard  
Hometown - Miami, Fla

#### Johnson's Season Highs

Points.....	11	- Labette
Field Goals .....	5	- Labette
Field Goal Attempts .....	8	- Labette
3-Pointers .....	0	- Labette
3-Point Attempts .....	3	- Labette
Free Throws .....	4	- St. Mary JV
Free-Throw Attempts .....		- St. Mary JV
Rebounds .....	4	- St. Mary JV
Assists .....	6	- St. Mary JV
Blocked Shots .....	0	- Labette
Steals.....	1	- 2 times (last vs. Labette)
Minutes Played.....	28:30	- Labette

Opponent .....	FG-A	3Pt-A	FT-A	Pts	OR	DR	TR	PF	A	TO	B	S	Min
St. Mary JV*	1-6	0-3	4-4	6	0	4	4	1	6	0	0	1	28:08
Labette*	5-8	0-1	1-3	11	0	2	2	2	3	3	0	1	28:30

Sterling JV  
Fort Scott  
Weatherford  
Allen County  
Clarendon  
McCook  
Highland  
Allen County  
Friends University JV  
Coffeyville  
Kansas City  
Central Nebraska  
Seward County  
Dodge City  
Garden City  
Butler  
Barton  
Colby  
Pratt  
Cloud County  
Seward County  
Dodge City  
Garden City  
Butler  
Barton  
Colby  
Pratt  
Cloud County

\* - Indicates Started Game



### Javari Williams

Height - 6-3  
Year - Redshirt Freshman  
Position - Foward  
Hometown - Brampton, Ontario, Canada

#### Williams' Season Highs

Points .....	10	- St. Mary JV
Field Goals .....	5	- St. Mary JV
Field Goal Attempts .....	13	- St. Mary JV
3-Pointers .....	0	
3-Point Attempts .....	1	- St. Mary JV
Free Throws .....	0	
Free-Throw Attempts.....	4	- Labette
Rebounds .....	7	- St. Mary JV
Assists .....	1	- Labette
Blocked Shots .....	0	
Steals .....	1	- St. Mary JV
Minutes Played .....	20:20	- St. Mary JV

Opponent .....	FG-A	3Pt-A	FT-A	Pts	OR	DR	TR	PF	A	TO	B	S	Min
St. Mary JV .....	5-13	0-1	0-2	10	4	3	7	1	0	4	0	1	20:20
Labette .....	3-7	0-0	0-4	6	4	2	6	1	1	0	0	0	17:21

Sterling JV  
Fort Scott  
Weatherford  
Allen County  
Clarendon  
McCook  
Highland  
Allen County  
Friends University JV  
Coffeyville  
Kansas City  
Central Nebraska  
Seward County  
Dodge City  
Garden City  
Butler  
Barton  
Colby  
Pratt  
Cloud County  
Seward County  
Dodge City  
Garden City  
Butler  
Barton  
Colby  
Pratt  
Cloud County

\* - Indicates Started Game

## 2008-09 Blue Dragon Player Season Recaps



### Tom Shirley

Height - 6-8  
 Year - Freshman  
 Position - Forward  
 Hometown - Grantville, KS

#### Shirley's Season Highs

Points	8	- St. Mary JV
Field Goals	3	- Labette
Field Goal Attempts	5	- Labette
3-Pointers	0	
3-Point Attempts	0	
Free Throws	4	- St. Mary JV
Free-Throw Attempts	4	- St. Mary JV
Rebounds	12	- Labette
Assists	2	- 2 times (last vs. Labette)
Blocked Shots	3	- St. Mary JV
Steals	2	- 2 times (last vs. Labette)
Minutes Played	25:55	- Labette

Opponent	FG-A	3Pt-A	FT-A	Pts	OR	DR	TR	PF	A	TO	B	S	Min
St. Mary JV*	2-3	0-0	4-4	8	1	5	6	2	2	1	3	2	21:24
Labette*	3-5	0-0	1-2	7	6	6	12	3	2	1	0	2	24:55
Sterling JV													
Fort Scott													
Weatherford													
Allen County													
Clarendon													
McCook													
Highland													
Allen County													
Friends University JV													
Coffeyville													
Kansas City													
Central Nebraska													
Seward County													
Dodge City													
Garden City													
Butler													
Barton													
Colby													
Pratt													
Cloud County													
Seward County													
Dodge City													
Garden City													
Butler													
Barton													
Colby													
Pratt													
Cloud County													

\* - Indicates Started Game



### Cody Beaton

Height - 6-3  
 Year - Freshman  
 Position - Guard  
 Hometown - Hutchinson, KS

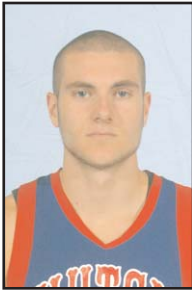
#### Beaton's Season Highs

Points	3	- St. Mary JV
Field Goals	1	- St. Mary JV
Field Goal Attempts	1	- 2 times (last vs. Labette)
3-Pointers	1	- St. Mary JV
3-Point Attempts	4	- St. Mary JV
Free Throws	1	- Labette
Free-Throw Attempts	2	- Labette
Rebounds	2	- Labette
Assists	3	- Labette
Blocked Shots	0	
Steals	0	
Minutes Played	8:58	- St. Mary JV

Opponent	FG-A	3Pt-A	FT-A	Pts	OR	DR	TR	PF	A	TO	B	S	Min
St. Mary JV	1-1	1-4	0-0	3	0	0	0	0	0	0	0	0	8:58
Labette	0-1	0-1	1-2	1	1	1	2	0	3	0	0	0	7:54
Sterling JV													
Fort Scott													
Weatherford													
Allen County													
Clarendon													
McCook													
Highland													
Allen County													
Friends University JV													
Coffeyville													
Kansas City													
Central Nebraska													
Seward County													
Dodge City													
Garden City													
Butler													
Barton													
Colby													
Pratt													
Cloud County													
Seward County													
Dodge City													
Garden City													
Butler													
Barton													
Colby													
Pratt													
Cloud County													

\* - Indicates Started Game

## 2008-09 Blue Dragon Player Season Recaps



### Austin Bond

Height - 6-5  
 Year - Sophomore  
 Position - Guard  
 Hometown - Kansas City, KS

#### Bond's Season Highs

Points.....7 - Labette  
 Field Goals.....2 - 2 times (last vs. Labette)  
 Field Goal Attempts .....6 - St. Mary JV  
 3-Pointers.....1 - 2 times (last vs. Labette)  
 3-Point Attempts .....4 - St. Mary JV  
 Free Throws .....2 - Labette  
 Free-Throw Attempts.....3 - Labette  
 Rebounds .....6 - St. Mary JV  
 Assists .....4 - St. Mary JV  
 Blocked Shots .....1 - Labette  
 Steals .....2 - St. Mary JV  
 Minutes Played .....21:34 - St. Mary JV

Opponent	FG-A	3Pt-A	FT-A	Pts	OR	DR	TR	PF	A	TO	B	S	Min
St. Mary JV	2-6	1-4	0-0	5	2	4	6	2	4	1	0	2	21:34
Labette	2-4	1-3	2-3	7	1	0	1	1	1	1	1	1	13:25
Sterling JV													
Fort Scott													
Weatherford													
Allen County													
Clarendon													
McCook													
Highland													
Allen County													
Friends University JV													
Coffeyville													
Kansas City													
Central Nebraska													
Seward County													
Dodge City													
Garden City													
Butler													
Barton													
Colby													
Pratt													
Cloud County													
Seward County													
Dodge City													
Garden City													
Butler													
Barton													
Colby													
Pratt													
Cloud County													

\* - Indicates Started Game



### Dominique Rutledge

Height - 6-8  
 Year - Freshman  
 Position - Forward  
 Hometown - Newark, N.J.

#### Rutledge's Season Highs

Points .....0  
 Field Goals .....0  
 Field Goal Attempts.....0  
 3-Pointers .....0  
 3-Point Attempts .....0  
 Free Throws .....0  
 Free-Throw Attempts .....0  
 Rebounds .....0  
 Assists.....0  
 Blocked Shots.....0  
 Steals .....0  
 Minutes Played .....0

Opponent	FG-A	3Pt-A	FT-A	Pts	OR	DR	TR	PF	A	TO	B	S	Min
St. Mary JV	DNP												
Labette	DNP												
Sterling JV													
Fort Scott													
Weatherford													
Allen County													
Clarendon													
McCook													
Highland													
Allen County													
Friends University JV													
Coffeyville													
Kansas City													
Central Nebraska													
Seward County													
Dodge City													
Garden City													
Butler													
Barton													
Colby													
Pratt													
Cloud County													
Seward County													
Dodge City													
Garden City													
Butler													
Barton													
Colby													
Pratt													
Cloud County													

\* - Indicates Started Game

## 2008-09 Blue Dragon Player Season Recaps



### Ryan Douvier

Height - 6-5  
 Year - Sophomore  
 Position - Forward  
 Hometown - Newton, KS

#### Douvier's Season Highs

Points .....	6 - St. Mary JV
Field Goals .....	2 - St. Mary JV
Field Goal Attempts .....	6 - St. Mary JV
3-Pointers .....	0
3-Point Attempts .....	2 - Labette
Free Throws .....	2 - St. Mary JV
Free-Throw Attempts .....	2 - St. Mary JV
Rebounds .....	10 - St. Mary JV
Assists .....	2 - Labette
Blocked Shots .....	1 - Labette
Steals .....	2 - St. Mary JV
Minutes Played .....	24:06 - St. Mary JV

Opponent .....	FG-A	3Pt-A	FT-A	Pts	OR	DR	TR	PF	A	TO	B	S	Min
St. Mary JV*	2-6	0-1	2-2	6	3	7	10	4	0	1	0	2	24:06
Labette*	0-2	0-2	0-0	0	1	2	3	4	2	0	1	0	11:24

Sterling JV  
 Fort Scott  
 Weatherford  
 Allen County  
 Clarendon  
 McCook  
 Highland  
 Allen County  
 Friends University JV  
 Coffeyville  
 Kansas City  
 Central Nebraska  
 Seward County  
 Dodge City  
 Garden City  
 Butler  
 Barton  
 Colby  
 Pratt  
 Cloud County  
 Seward County  
 Dodge City  
 Garden City  
 Butler  
 Barton  
 Colby  
 Pratt  
 Cloud County

\* - Indicates Started Game