

# Hutchinson Community College

# BLUE DRAGONS

## 2008-09 Men's Basketball Game Notes

Blue Dragon Media Relations - (620) 664-3593  
Media Contact - Steve Carpenter, Sports Information Director

Release Date - November 13, 2008  
Athletic web site - [www.hutchcc.edu/dragons](http://www.hutchcc.edu/dragons)

### 2008 AIRPORT STEAKHOUSE CLASSIC



#### Game 7: No. 20 Hutchinson (6-0) at Clarendon College (3-2)

Date: Friday, November 14, 2008      Tipoff: 7:30 p.m.  
Site: Hutchinson Sports Arena (Capacity - 7,000)  
Radio: KHUT-FM (102.9), 7:20 p.m. airtime  
Internet: [www.hutchcc.edu/dragons](http://www.hutchcc.edu/dragons) (live radio, stats)



#### Game 8: No. 20 Hutchinson vs. McCook (3-2)

Date: Saturday, November 15, 2008      Tipoff: 7:30 p.m.  
Site: Hutchinson Sports Arena (Capacity - 7,000)  
Radio: KHUT-FM (102.9), 7:20 p.m. airtime  
Internet: [www.hutchcc.edu/dragons](http://www.hutchcc.edu/dragons) (live radio, stats)



### NO. 20 BLUE DRAGONS LOOK TO STAY UNBEATEN AT AIRPORT STEAKHOUSE CLASSIC

Defense has set the early tone for the Hutchinson Community College men's basketball team.

Heading into this weekend's Airport Steakhouse Classic at the Sports Arena, the Blue Dragons have allowed their first six opponents an average of 56.5 points per game and just 33.9 percent shooting.

The 20th-ranked Blue Dragons (6-0) will meet Clarendon College on Friday night and McCook Community College on Saturday night. Both games are set to tip off at 7:30 p.m.

Both games can be heard live on Blue Dragon flagship station KHUT-FM (102.9) with Glen Grunwald (play-by-play) and Rusty Hilst (analysis) calling the action. Air time each night is 7:20 p.m. The games can also be heard on the internet on the Blue Dragon Sports Network.

#### CLASSIC SCHEDULE

Friday, November 14  
3:30 p.m. - North Lake vs. McCook  
7:30 p.m. - Hutchinson vs. Clarendon  
Saturday, November 15  
3:30 p.m. - North Lake vs. Clarendon  
7:30 p.m. - Hutchinson vs. McCook

Hutchinson comes off an impressive defensive display against Allen County where the Blue Dragons held the Red Devils to 53 points and 35.7 percent shooting.

No HCC opponent has shot better than 35.8 percent this season.

Clarendon comes into the weekend with a 3-2 record. McCook also has a 3-2 record.

Offensively, Hutchinson is averaging 87.3 points per game, shooting 50.6 percent from the field.

### 2008-09 BLUE DRAGON SCHEDULE

Date	Opponent	Time/Result
QUARTERBACK CLASSIC		
Oct. 31	U. of St. Mary Junior Varsity	W, 86-54
Nov. 1	Labette	W, 79-57
NOV. 6-8 GRAND PRAIRIE HOTEL CLASSIC		
Nov. 6	Sterling College JV	W, 102-45
Nov. 7	Fort Scott	W, 81-62
Nov. 8	Weatherford College	W, 97-68
Nov. 11	at Allen County	W, 79-53
NOV. 14-15 AIRPORT STEAKHOUSE CLASSIC		
Nov. 14	Clarendon College	7:30 p.m.
Nov. 15	McCook	7:30 p.m.
Nov. 22	Highland	7 p.m.
Nov. 25	Allen County	7 p.m.
Dec. 2	Friends University JV	7 p.m.
DEC. 5/7 JAYHAWK SHOOTOUT at Coffeyville		
Dec. 5	vs. Coffeyville	7 p.m.
Dec. 3	vs. Kansas City	3 p.m.
Dec. 13	Central Nebraska	7:30 p.m.
Jan. 3	Seward County	7:30 p.m.
Jan. 7	at Dodge City	7:30 p.m.
Jan. 10	Garden City	7:30 p.m.
Jan. 14	at Butler	7:30 p.m.
Jan. 21	Barton	8 p.m.
Jan. 25	at Colby	4 p.m.
Jan. 28	Pratt	7:30 p.m.
Jan. 31	at Cloud County	8 p.m.
Feb. 2	at Seward County	8 p.m.
Feb. 4	Dodge City	7:30 p.m.
Feb. 7	at Garden City	8 p.m.
Feb. 11	Butler	7:30 p.m.
Feb. 18	at Barton	8 p.m.
Feb. 21	Colby	7:30 p.m.
Feb. 25	at Pratt	8 p.m.
Feb. 28	Cloud County	7:30 p.m.
Mar. 4	Region VI First Round at TBA	
Mar. 7-9	Region VI Tournament at Wichita	

### 2008-09 BLUE DRAGON NUMERICAL ROSTER

No.	Name	Pos	Ht.	Yr.	Hometown (Previous school)	Worth Noting
3	Darius Johnson-Odom	G	6-2	Fr.	Raleigh, NC (Wakefield HS)	Six games in double figures; three 20-plus point games.
10	Caydrick Bloomquist	G	6-0	Fr.	Emporia, KS (Emporia HS)	Drilled first shot as a Blue Dragon, 3-pointer vs. USM JV.
15	Devon McBride	G	6-3	So.	Richmond, VA (Binghamton U.)	Signed of intent with University of Arkansas-Little Rock
21	Cliff Dixon	F	6-10	So.	Suitland, MD (Mottow State CC)	Had first HCC double-double with 17 points, 12 rebs vs. Weatherford.
22	Lazarus Johnson	G	6-3	Fr.	Miami, FL. (Miami Senior HS)	Had season-high nine assists against Sterling College JV
23	Javari Williams	F	6-5	R-Fr.	Brampton, Ontario (St. Joseph HS)	Top Blue Dragon scorer off the bench at 8.8 PPG.
24	Tom Shirley	F	6-7	Fr.	Grantville, KS (Jefferson West HS)	Hit 8 of 10 shots in 19-point outing against Weatherford.
25	Cody Beaton	G	6-0	Fr.	Hutchinson, KS (Buhler HS)	Beaton played tennis for the Blue Dragons in the spring of 2008.
33	Austin Bond	G	6-0	So.	Kansas City, KS (Piper HS)	Played in 13 games as a freshman, averaged 2.9 ppg.
34	Dominique Rutledge	F	6-8	Fr.	Newark, NJ (Edison Academy)	Didn't play in the first two games of the season because of injury.
42	Ryan Douvier	F	6-6	So.	Newton, KS (Newton HS)	First start, Douvier scored 6 pts. with 10 rebs., 2 steals vs. USM. JV
RS	Everson Lacerda	C	6-11	So.	Belo Horizonte, Brazil (Colby CC)	Transfer from Colby; will redshirt in the 2008-09 season.

## RYAN SWANSON FILE

Ryan Swanson is in his third season as Blue Dragon head coach. The Hutchinson native and former HCC player is the Blue Dragons' 13th head coach in 77 seasons of basketball.

HCC is the fourth head coaching stop - all at the junior college level - in Swanson's career. Swanson is 188-74 in eight-plus seasons as a juco head coach. He is now 52-17 at HCC. He is now in 10th place on the HCC career coaching list.

He is the seventh HCC head coach to win 20 games in each of his first two seasons.

Swanson was the 12th straight HCC head coach to win 20 games in his first season. He led the Blue Dragons to a 23-8 record in 2006-07. Last season, Swanson guided the Blue Dragons to a 23-9 record and a second-place finish in the Jayhawk West, plus a quarterfinal berth in the Region VI Tournament.

Swanson was 74-24 in three seasons at St. Catharine's College, 16-14 in one season at Marshalltown, Iowa and 46-19 in two seasons at Garden City. Swanson led the 2004-05 Garden City team to its first conference championship in more than 50 years.

Swanson also has NCAA Division I coaching experience as an assistant at the University of Wisconsin-Milwaukee for Bruce Pearl (who is now at Tennessee).

Swanson's 2002-03 UWM team went 24-8, won the Horizon League crown and earned a trip to the NCAA Tournament for the first time in the school's 107-year history.

UWM was a No. 12-seed and just missed upsetting No. 5-seed Notre Dame 70-69.

Swanson, who graduated from Hutchinson High School, was a redshirt on the Blue Dragons' 1988 NJCAA national championship team, played in 1989 and was a graduate assistant for head coach David Farrar in 1990.

## SWANSON - BY THE NUMBERS

Career record (8th season).....	188-74
Record at HCC (3rd season).....	52-17
Record at Sports Arena.....	40-5
Record on opposing floors.....	8-11
Record on neutral courts.....	4-1
Record vs. Jayhawk West teams.....	21-11
Record vs. Jayhawk East teams.....	11-4
Record vs. Non-conference teams.....	21-2
Record vs. Nationally ranked teams.....	8-4
Record in Jayhawk Shootout.....	4-0
Record in Region VI Tournament.....	1-2
Record in overtime games.....	1-1
Record in games of 9 points or less.....	15-6
Record in games of 10 points or more.....	37-11

## Tonight's Rosters

### HUTCHINSON BLUE DRAGONS (6-0)

No.	Player	Pos.	Ht.	Yr.	Hometown
3	Darius Johnson-Odom	G	6-2	Fr.	Raleigh, NC
10	Caydrick Bloomquist	G	6-0	Fr.	Emporia, KS
15	Devon McBride	G	6-3	So.	Richmond, VA
21	Cliff Dixon	F	6-10	So.	Suitland, MD
22	Lazarius Johnson	G	6-3	Fr.	Miami, FL
23	Javari Williams	F	6-5	R-Fr.	Brampton, Ontario
24	Tom Shirley	F	6-7	Fr.	Grantville, KS
25	Cody Beaton	G	6-0	Fr.	Hutchinson, KS
33	Austin Bond	G	6-0	So.	Kansas City, KS
34	Dominique Rutledge	F	6-8	Fr.	Newark, NJ
42	Ryan Douvier	F	6-6	So.	Newton, KS

Head Coach - Ryan Swanson

Assistant Coaches - Dave Brown, Ryan Freeberg

### CLARENDON COLLEGE BULLDOGS (3-2)

No.	Player	Pos.	Ht.	Yr.	Hometown
3	Maurice Abraham	G	6-3	So.	Pontiac, MI
4	Danny Agbelese	F	6-9	Fr.	Lanham, MD
5	Elhadji Ndiaye	G	6-0	Fr.	Brooklyn, NY
10	Javon Cravin	G	6-0	Fr.	Amarillo, TX
12	Sam Jones	G	6-0	Fr.	Arlington, TX
14	Brandon Burks	G	5-6	Fr.	Amarillo, TX
15	Michael Knight	G	6-3	Fr.	Inglewood, CA
20	Nick Tunnel	G	6-0	Fr.	Amarillo, TX
21	Will Benson	G	6-2	Fr.	Grand Rapids, MI
25	Eric Coleman	G	6-2	Fr.	Longview, TX
30	Moses Adenpoju	F	6-5	So.	Australia
32	Tyris Dowell	G	6-1	So.	Avinger, TX
33	Nick Pride	G	6-3	Fr.	Eustis, FL
40	D'Angelo Penman	F	6-8	Fr.	Inkster, MI
50	Deron Forman	F	6-5	Fr.	Amarillo, TX

Head Coach - Tony Starnes

Assistants - Jeremy Vonner; Justin Chambers

### MCCOOK CC INDIANS (3-2)

No.	Player	Pos.	Ht.	Yr.	Hometown
3	Javoun Martin	G	5-10	So.	Marksville, LA
4	Jonathan Estis	C	6-6	Fr.	Monroe, LA
5	Trey Mosby	G	5-10	So.	Portageville, MO
11	Myron Mingo	G	6-2	So.	Marksville, LA
13	Ralph Foster	G	5-9	Fr.	Jacksonville, FL
15	Alonzo Louis	G	5-8	So.	Malden, MO
20	Deshawn Howard	F/C	6-7	So.	Tucson, AZ
21	Ronnell Grant	G	6-0	So.	Tucson, AZ
22	Drew Diediker	G	6-2	Fr.	Allen, NE
23	Justin Patton	G	6-7	Fr.	Bossier City, LA
24	Ray Robinson	G	6-4	So.	Jacksonville, FL
25	Marcus Landry	F/C	6-6	So.	Sulpher, LA
31	Kyle Warren	G	6-3	So.	Gamebridge, Ontario
33	John Hill	G	6-2	Fr.	Omaha, NE
35	Eric Rippen	G	5-9	Fr.	Culbertson, NE
41	Justin Huss	G	5-10	Fr.	Culbertson, NE
45	Deion Sherrod	G	6-3	Fr.	Omaha, NE
55	Keenan Gaskin	C	6-6	Fr.	Monroe, LA

Head Coach - Brandon Lenhart

Assistants - Joe Reagan, Craig Wamsley

### NORTH LAKE COLLEGE BLAZERS (1-2)

No.	Player	Pos.	Ht.	Yr.	Hometown
3	David Nash	F	6-8	So.	Justin, TX
10	Jamon Wilson	G	6-0	Fr.	Houston, TX
11	Brian Sanders	G	6-1	Fr.	Houston, TX
13	Steve Johunkin	G	6-2	Fr.	Irving, TX
14	Chris Carter	F	6-4	Fr.	Mesquite, TX
20	Olden Hatcher	G	6-1	Fr.	Mesquite, TX
21	Jordan Alexander	G	6-4	So.	Angleton, TX
22	Bryant Ross	F	6-7	So.	Dallas, TX
23	Yusef Taha	F	6-8	Fr.	Bedford, TX
24	Nathan Pratt	G	6-5	Fr.	San Antonio, TX
25	Carlos Montiel	F	6-5	Fr.	Mansfield, TX
42	Joel Gardner	C	6-8	Fr.	Montego Bay, Jamaica
44	Jamie Egenti	F	6-7	So.	Watauga, TX

Head Coach - Tim McGraw

Assistants - Mitchel James

## DRAGONS NO. 3 IN NJCAA IN ALL-TIME WINS

With a 79-53 victory over Labette on Nov. 1, 2008, the Blue Dragons became only the third NJCAA program to post 1,500 victories.

Now the third-winningest program in junior college basketball history, the Blue Dragons are 1,504-522, a winning percentage of .742.

With a 63-46 victory over river Butler Community College on Jan. 28, 2004, the Blue Dragons posted victory No. 1,400.

The Blue Dragons trail only Southeastern Iowa and Moberly Area, Mo., in all-time wins. Southeastern Iowa became the first NJCAA program to win 1,500 games in the 2007-08 season.

## NJCAA ALL-TIME WINS

1. Southeastern Iowa.....	1,523
2. Moberly.....	1,507
3. Hutchinson.....	1,504
4. Vincennes.....	1,440

## DRAGONS IN NATIONAL POLL

For only the fourth time since 2001, the Blue Dragons have started a season ranked in the NJCAA preseason poll. HCC opens the 2008-09 season ranked No. 20. It's the second-straight season HCC starts ranked in the preseason.

The 2007-08 Blue Dragons opened ranked 26th. HCC was unranked in 2005. The 2003 poll had HCC starting 26th and the 2004 poll had HCC 13th. They were unranked in 2002 and 2001.

When the first regular-season poll comes out in late November, only 20 teams will be ranked.

## LAST GAME AGAINST ALLEN COUNTY

Darius Johnson-Odom flirted with a triple-double Tuesday with 25 points, nine assists and seven rebounds, and the No. 20 Blue Dragons routed Allen County 79-53 in Iola.

Johnson-Odom, a freshman guard, hit 8 of 14 shots and sank 9 of 10 free throws. The rest of the Blue Dragons made just 7 of 18 from the foul line.

HCC was making its first appearance in Iola since 1941.

Also with a big game was freshman forward Tom Shirley. Coming off a 19-point performance Saturday, Shirley swished four 3-pointers and scored 14 points.

Hutchinson led 39-22 at halftime before Allen County (2-2) came out on fire early in the second half. The Red Devils hit their first six shots and got within 10 points after a James Davis 3-pointer with 13 minutes, 51 seconds left in the game.

But the Blue Dragons held Allen County without a field goal for more than 10 minutes, and a 24-4 run put the game away.

## SERIES HISTORIES WITH AIRPORT STEAKHOUSE CLASSIC FOES

● **Clarendon** - This will be the ninth meeting between Hutchinson and Clarendon, the first since 1983 and only the second since 1964, which was the last time the Bulldogs played in the Sports Arena in the regular season. HCC is 6-2 all-time against Clarendon, winning the three games in the Salt City in 1956, 1959 and 1964. Clarendon won the last meeting in 1983 at Clarendon.

● **McCook** - Saturday's meeting with McCook will be only the first all-time between the Blue Dragons and Indians, the first since 1992 and just the second since 1962. HCC has dominated the first four meetings with McCook, located in McCook, Neb., winning twice in Hutchinson and twice on neutral floors. The closest game of the series was 23 points in 1950.

## HOME COOKING GOOD TO BLUE DRAGONS

The Blue Dragons have always enjoyed a strong home-court advantage in the 7,000-seat Sports Arena. With their 70-60 victory over Cloud County on Jan. 14, 2006, the Blue Dragons earned their 700th regular-season victory in the famed basketball venue.

Moving into the Sports Arena in the 1952-53 season, the Blue Dragons have amassed a 743-131 record in this building.

In the 53 years that Hutchinson has called the Sports Arena home; the Blue Dragons have averaged 13.1 wins at home. The 2007-08 team went 17-3 at home.

They went undefeated through an entire home season seven times (1958-59, 1959-60, 1973-74, 1974-75, 1981-82, 1987-88, 2003-04).

Before the Sports Arena, HCC played at Memorial (Convention) Hall from 1928 to 1952 where the Blue Dragons were 112-50.

## SEASON-OPENING SUCCESS

The Blue Dragons have been hard to beat on opening night over the years.

Hutchinson is 59-19 in season openers, winning 11 of the last 12 opening games.

Hutchinson is 64-14 in home openers.

The highest point total for HCC on opening night was 115 points scored against Joliet Junior College in a 115-103 victory in 1977. Hutch surpassed the century mark five times on opening night: 102 vs. York College in 1965; 115 vs. Joliet in 1977, 101 vs. Western Nebraska in 1990, 107 vs. Malcolm X I 1997 and 100 vs. Malcolm X in 1998.

The largest opening night winning margin was 58 set in 1992, an 88-32 win over Hesston College.

## 2008-09 BLUE DRAGONS BRING BACK LITTLE EXPERIENCE

Even in Ryan Swanson's first season two years ago at HCC he had more returning experience than he does heading into the 2008-09 season.

The Dragons start as the preseason favorite to win the Jayhawk Conference Western Division and are ranked 20th in the preseason NJCAA Division I men's basketball poll.

Only two players return with court time with the Blue Dragons from last season.

Those two players – guard Austin Bond and forward Ryan Douvier – played a combined total of 246 minutes.

Bond is a 6-foot-3 guard from Kansas City, Kan. (Piper High School). His freshman season was extremely limited because of injuries. In 13 games, Bond averaged 2.9 points, shooting 31.3 percent from 3-point range.

Douvier is a 6-6 forward from Newton. He saw limited playing time as a freshman, averaging 0.6 points and 0.6 rebounds.

Swanson will have a pair of talented transfers and a group of untested freshmen to try and lead the Blue Dragons to their first Jayhawk West championship since 2004 and the first Region VI crown since 1997.

### SERIES HISTORIES

Clarendon, Texas

Record - 6-2

Date	Site	Result
12/22/55	Clarendon	W, 93-78
12/56	Clarendon	W, 96-73
1/1/59	Hutch	W, 74-47
12/15/59	Hutch	W, 99-61
12/23/59	Clarendon	L, 83-91
12/17/63	Clarendon	W, 79-75
12/12/64	Hutch	W, 90-58
11/83	Clarendon	L, 61-70

McCook, Neb.

Record - 4-0

Date	Site	Result
12/20/49	Garden City (N)	W, 75-30
12/11/50	Garden City (N)	W, 68-45
12/15/62	Hutch	W, 103-71
12/92	Hutch	W, 108-71

## Jayhawk Conference Men's Standings

Jayhawk West	League	Overall
Butler	0-0	6-0
<b>Hutchinson</b>	<b>0-0</b>	<b>5-0</b>
Pratt	0-0	5-0
Seward County	0-0	4-0
Barton County	0-0	3-0
Cloud County	0-0	4-1
Garden City	0-0	2-1
Dodge City	0-0	1-1
Colby	0-0	0-3

Jayhawk East	League	Overall
Cowley College	0-0	5-0
Independence	0-0	3-0
Highland	0-0	2-0
Coffeyville	0-0	3-1
Neosho County	0-0	2-1
Allen County	0-0	2-2
Fort Scott	0-0	2-2
Johnson County	0-0	1-1
Kansas City, KS	0-0	1-2
Labette	0-0	1-4

Through Wednesday, Nov. 12

## 2008-09 NJCAA Division I Basketball Preseason Poll

Team	2007-08 Record
1. Indian Hills CC, Iowa	28-10
2. Chipola College, Fla.	35-2
3. Midland College, Texas	28-4
4. Walters State CC, Tenn.	32-3
5. Cowley College	31-3
6. Arkansas-Fort Smith	28-4
7. San Jacinto College, Texas	23-9
8. College of Southern Idaho	30-2
9. Georgia Perimeter College	23-12
10. Mineral Area College, Mo.	19-12
11. Salt Lake CC, Utah	32-4
12. Itawamba CC, Miss.	30-4
13. Southeastern Illinois	28-7
14. Shelton State CC, Ala.	25-12
15. Northeastern Junior College, Colo.	30-4
16. Paris Junior College, Texas	30-7
17. Vincennes University, Ind.	28-6
18. South Plains College, Texas	30-5
19. Northwest Florida State	27-4
<b>20. Hutchinson CC</b>	<b>23-9</b>
21. Aiken Technical College, S.C.	28-6
22. Iowa Western CC	28-5
23. Wallace State CC, Ala.	32-1
24. Southwestern Illinois	21-9
25. Arizona Western College	26-4
26. Seminole State College, Okla.	21-9
27. Monroe College N.Y.	24-8
28. Kennedy-King College, Ill.	27-5
29. Coffeyville CC	24-9
30. North Dakota State College of Science	25-6

**Others receiving votes:** Brunswick College, N.C. (28-5); Casper College, Wyo. (20-12); Cloud County CC (21-12); Hagerstown CC, Md. (22-8); Harcum College (26-3); Howard College, Texas (25-8); John A. Logan College, Ill. (18-14); Miami-Dade College, Fla. (18-9); Mississippi Gulf Coast (15-12); Northern Oklahoma-Enid (19-14); Odessa College, Texas (27-5); Pearl River CC, Fla. (21-7); Snead State CC, Ala. (24-7); South Georgia Technical College (20-12); Three Rivers CC, Mo. (28-9); Truitt-McConnel College, Ga. (21-11); Tyler Junior College, Texas (25-4); Western Nebraska (16-15).

## NOTING THE BLUE DRAGONS

- Tom Shirley is the nephew of former Iowa State standout Paul Shirley.
- The last time that Hutchinson allowed 100 points in a game was Jan. 24, 2004, when the Dragons gave up triple digits in a 100-94 loss to Barton County. That's a streak of 235 games.

## JAYHAWK WEST PRESEASON PREDICTIONS

The Blue Dragons were picked to win the 2009 Jayhawk West championship in a poll of league coaches released at the annual Jayhawk Conference Media Day on Oct. 13 in Wichita.

Hutchinson, Cloud County and Barton were the top three picked by the coaches.

Last season, HCC was picked to finish second in the preseason poll.

Cowley College was the prohibitive favorite to win the Jayhawk East in 2009.

### 2008-09 JAYHAWK WEST PREDICTIONS

1. Hutchinson
2. Cloud County
3. Barton
4. Garden City
5. Seward County
6. Dodge City
7. Pratt
8. Butler
9. Colby

## BLUE DRAGON FAMILY LOSES ONE OF ITS GREATS - CORTEZ BARNES

Cortez Barnes, one of the top 3-point shooters and all-around players in HCC men's basketball history, died in a car accident in Texas on Sept. 21, 2008.

Barnes, an All-Jayhawk Conference performer who played at HCC in 1990-91 and 1991-92, was on his way to Wichita from his home in Dallas when the accident occurred.

Barnes, 36, and his wife, Jamai, had six children.

Barnes came to HCC before the 1990-91 season for coach Dave Farrar after a stellar prep career at Wichita Heights.

A versatile 6-foot-7 forward, Barnes became the program's career leader in 3-point field goals, tallying 122 for his career. That mark is still third on the career chart today.

Barnes scored 994 career points at HCC, which ranks 12th on the career chart. He's 10th in made field goals (390) and third in 3-point attempts (350).

During his freshman season in 1990-91, Barnes averaged 16.3 points per game, shooting 44 percent from the field overall and 38.8 percent from behind the 3-point arc. The 62 3-pointers are the sixth-most in single-season history and fourth most by a freshman. The 38.8 percent efficiency ranks sixth on the single-season charts and is tied for seventh on the freshman chart. His 489 points rank seventh on the freshman chart. His scoring average is tied for sixth on the freshman chart.

The Blue Dragons went 21-9 in 1991, Farrar's final season at Hutchinson. Under new head coach Steve McClain, Barnes averaged 14.8 points and hit 31.6 percent from 3-point range. The Dragons were 27-7 and finish as Region VI runner-up to eventual national runner-up Butler County.

## 2008-09 BLUE DRAGONS HAVE DEFENSIVE REPUTATION TO UPHOLD

After setting a team record for defensive field goal percentage in 2008, the 2008-09 Blue Dragons will have a tough act to follow.

Last year's Blue Dragons allowed opponents just 38.1 percent shooting from the floor. They tied for second in the Jayhawk West in points allowed at 68 points per game.

## Miscellaneous Statistics

Record at home .....	5-0
Record on road .....	1-0
Record on neutral courts .....	0-0
Largest margin of victory .....	57
Largest margin of defeat.....	0
Largest lead surrendered in loss .....	0
Largest halftime lead surrendered in loss .....	0
Largest deficit overcome to win .....	5
Largest halftime deficit overcome to win .....	0
Record when ahead at halftime .....	6-0
Record when behind at halftime .....	0-0
Record when tied at halftime.....	0-0
Record when shooting 50 pct. or better .....	3-0
Record when shooting less than 50 pct.....	3-0
Record when opp. shoots 50 pct. or better .....	0-0
Record when opp. shoots less than 50 pct. ....	6-0
Record when outshooting opponent .....	6-0
Record when outshot by opponent .....	0-0
Record when outrebounding opponent.....	6-0
Record when outrebounded by opponent .....	0-0
Record when rebounding is even .....	0-0
Record in overtime.....	0-0
Record when scoring 80 points or more.....	4-0
Record when scoring 79 points or fewer .....	2-0
Record when allowing 80 points or more .....	0-0
Record when allowing 79 points or fewer.....	6-0
Times HCC scores 100 points or more .....	1
Times HCC scores 90-99 points .....	1
Times HCC scores 80-89 points .....	2
Times HCC scores 70-79 points .....	2
Times HCC scores 60-69 points .....	0
Times HCC scores 50-59 points .....	0
Times HCC scores 40-49 points .....	0
Times HCC scores 30-39 points .....	0
Times HCC scores 29 points or fewer .....	0
Times HCC shoots 60 percent or better .....	1
Times HCC shoots 50 to 59 percent .....	2
Times HCC shoots 40 to 49 percent .....	3
Times HCC shoots 30 to 39 percent .....	0
Times HCC shoots 29 percent or less .....	0
Times opponent scores 100 points or more .....	0
Times opponent scores 90-99 points .....	0
Times opponent scores 80-89 points .....	0
Times opponent scores 70-79 points .....	0
Times opponent scores 60-69 points .....	2
Times opponent scores 50-59 points .....	3
Times opponent scores 40-49 points .....	1
Times opponent scores 30-39 points .....	0
Times opponent scores 29 points or fewer .....	0
Times opponent shoots 60 percent or better .....	0
Times opponent shoots 50 to 59 percent.....	0
Times opponent shoots 40 to 49 percent.....	0
Times opponent shoots 30 to 39 percent.....	5
Times opponent shoots 29 percent or less .....	1



## 2008-09 Blue Dragon Individual/Team Superlatives

Points Scored	<b>HCC INDIVIDUAL HIGH</b> 25 - Darius Johnson-Odom vs. Allen County - 11/11	<b>OPPONENT INDIVIDUAL HIGH</b> 22 - Marcus Brister, Weatherford - 11/8
Field Goals	9 - Darius Johnson-Odom vs. USM JV - 10/31	8 - Justin Crutchfield, USM JV - 10/31
Field Goal Attempts	16 - Devon McBride vs. Fort Scott - 11/7	8 - Darrell Blanton, Fort Scott - 11/7
Field goal Pct. (min. 5 att.)	80.0 - Javari Williams vs. Sterling JV - 11/6 (4-5) 80.0 - Devon McBride vs. Weatherford - 11/8 (4-5)	16 - Darrell Blanton, Fort Scott - 11/7 60.0 - James Davis, Allen County - 11/11 (3-5)
3-Pointers	4 - Devon McBride vs. Sterling JV - 11/6	3 - James Davis, Allen County - 11/11
3-Point Attempts	7 - Devon McBride vs. Sterling JV - 11/6	8 - Derron Wooton, USM JV - 10/31
3-Point Pct. (min. 3 att.)	100.0 - Tom Shirley vs. Allen County - 11/11 (4-4)	60.0 - James Davis, Allen County - 11/11 (3-5)
Free Throws	9 - Darius Johnson-Odom vs. Allen County - 11/11	12 - Marcus Brister, Weatherford - 11/8
Free-Throw Attempts	12 - Devon McBride vs. Labette - 11/1	17 - Marcus Brister, Weatherford - 11/8
Free-Throw Pct. (min. 5 att.)	90.0 - Darius Johnson-Odom vs. Allen County - 11/11 (9-10)	83.3 - Darrell Blanton, Fort Scott - 11/7 (5-6)
Rebounds	12 - Tom Shirley vs. Labette - 11/1 12 - Cliff Dixon vs. Weatherford - 11/8	12 - Kyle Reed, Labette - 11/1
Assists	9 - Lazarus Johnson vs. Sterling College JV - 11/6 9 - Darius Johnson-Odom vs. Allen County - 11/11	6 - Marcus Brister, Weatherford - 11/8
Blocked Shots	3 - Tom Shirley - 2 times (last vs. Sterling JV - 11/6)	3 - Ramell Taylor, Fort Scott - 11/7
Steals	5 - Javari Williams vs. Sterling JV - 11/6	5 - Aaron Jackson, Allen County - 11/11
	<b>HCC TEAM HIGHS</b>	<b>HCC TEAM LOWS</b>
Points scored	102 - Sterling College JV - 11/6	79 - Labette - 11/1; Allen County 11/11
One half	53 - Sterling College JV - 11/6	35 - Labette - 11/1
FG made	39 - Sterling College JV - 11/6	28 - Allen County 11/11
FG attempts	70 - St. Mary JV - 10/31	55 - Allen County 11/11
FG percentage	60.0 - Sterling College JV - 11/6 (39-65)	44.3 - St. Mary JV - 10/31 (31-70)
3-pt made	10 - Sterling College JV - 11/6	4 - Labette - 11/1
3-pt attempts	24 - St. Mary JV - 10/31	14 - Weatherford - 11/8
3-pt percentage	46.7 - Allen County - 11/11 (7-15)	23.5 - Labette - 11/1
FT made	18 - St. Mary JV - 10/31	10 - Fort Scott - 11/7
FT attempts	18 - Weatherford - 11/8	15 - Allen County 11/11
FT percentage	37 - Labette - 11/1	45.9 - Labette - 11/1 (17-37)
Rebounds	81.8 - St. Mary JV - 10/31 (18-22)	41 - Allen County 11/11
Personal Fouls	54 - Weatherford - 11/8	15 - Fort Scott - 11/7
Assists	25 - Weatherford - 11/8	16 - Allen County - 11/11
Turnovers	27 - Sterling College JV - 11/6	12 - Sterling College JV - 11/6
Blocked shots	21 - Allen County - 11/11	1 - Fort Scott - 11/7
Steals	4 - St. Mary JV - 10/31; Labette - 11/1	6 - Fort Scott - 11/7; Weatherford - 11/8
	<b>OPPONENT TEAM HIGHS</b>	<b>OPPONENT TEAM LOWS</b>
Points scored	68 - Weatherford - 11/8	45 - Sterling College JV - 11/6
One half	36 - Fort Scott - 11/7	21 - St. Mary JV - 10/31; Sterling College JV - 11/6
FG made	24 - Weatherford - 11/8	18 - Sterling College JV - 11/6
FG attempts	67 - Weatherford - 11/8	51 - Sterling College JV - 11/6
FG percentage	35.8 - Weatherford - 11/8 (24-67)	28.8 - Labette - 11/1 (19-66)
3-pt made	7 - St. Mary JV - 10/31	3 - Labette - 11/1
3-pt attempts	26 - Weatherford - 11/8	13 - Sterling College JV - 11/6
3-pt percentage	30.8 - Sterling College JV - 11/6 (4-13)	15.4 - Weatherford - 11/8 (4-26)
FT made	16 - Labette - 11/1; Weatherford - 11/8	5 - Sterling College JV - 11/6
FT attempts	28 - Weatherford - 11/8	10 - Sterling College JV - 11/6
FT percentage	70.6 - Fort Scott - 11/7 (12-17)	36.6 - St. Mary JV - 10/31 (7-11)
Rebounds	46 - Labette - 11/1	29 - Sterling College JV - 11/6
Personal Fouls	28 - Labette - 11/1	14 - St. Mary JV - 10/31
Assists	13 - Allen County - 11/11	10 - Labette - 11/1; Sterling JV - 11-6; Weatherford - 11-6
Turnovers	31 - Sterling College JV - 11/6	12 - Weatherford - 11/8
Blocked shots	6 - Labette - 11/1	0 - Sterling College JV - 11/6
Steals	12 - Allen County - 11/11	6 - Fort Scott - 11/7

## 2008-09 Team Game-by-Game Comparisons

	Pts	FG-FGA	Pct.	3FG/3FGA	Pct.	FT-FTA	Pct.	O-D	Reb.	PF	A	TO	BS	S
at Hutchinson	86	31-70	44.3	6-24	25.0	18-22	81.8	16-33	49	17	19	16	4	12
U. of St. Mary JV	54	20-61	32.8	7-24	29.2	7-11	63.6	9-25	34	14	12	25	1	11
at Hutchinson	79	26-64	45.3	4-17	23.5	17-37	45.9	20-31	51	18	21	16	4	10
Labette	57	19-66	28.8	3-18	16.7	16-23	69.6	20-26	46	28	10	20	6	8
at Hutchinson	102	39-65	60.0	10-22	45.5	14-29	48.3	17-26	43	18	27	12	7	18
Sterling College JV	45	18-51	35.3	4-13	30.8	5-10	50.0	11-18	29	23	10	31	0	7
at Hutchinson	81	32-66	48.5	7-16	43.8	10-17	58.8	16-30	46	15	19	14	1	6
Fort Scott	62	23-65	35.4	4-19	21.1	12-17	70.6	13-22	35	15	12	13	4	6
at Hutchinson	97	37-67	55.2	5-14	35.7	18-31	58.1	19-35	54	25	26	20	5	6
Weatherford	68	24-67	35.8	4-26	15.4	16-28	57.1	14-32	32	24	10	12	3	8
Hutchinson	79	28-55	50.9	7-15	46.7	16-28	57.1	10-31	41	17	16	21	6	11
at Allen County	53	20-56	35.7	6-24	25.0	7-14	50.0	10-24	34	26	13	22	5	12
at Hutchinson														
Clarendon														
at Hutchinson														
McCook														
at Hutchinson														
Highland														
at Hutchinson														
Allen County														
Hutchinson														
Friends University JV														
Hutchinson														
vs. Coffeyville														
Hutchinson														
vs. Kansas City														
at Hutchinson														
Central Nebraska														
at Hutchinson														
Seward County														
Hutchinson														
at Dodge City														
at Hutchinson														
Garden City														
Hutchinson														
at Butler														
at Hutchinson														
Barton														
Hutchinson														
at Colby														
at Hutchinson														
Pratt														
Hutchinson														
at Cloud County														
Hutchinson														
at Seward County														
at Hutchinson														
Dodge City														
Hutchinson														
at Garden City														
at Hutchinson														
Butler														
Hutchinson														
at Barton														
at Hutchinson														
Colby														
Hutchinson														
at Pratt														
at Hutchinson														
Cloud County														

## 2008-09 Blue Dragon Player Season Recaps



### Darius Johnson-Odom

Height - 6-2  
 Year - Freshman  
 Position - Guard  
 Hometown - Raleigh, N.C.

#### Johnson-Odom's Season Highs

Points	25	- Allen County
Field Goals	9	- St. Mary JV
Field Goal Attempts	15	- Fort Scott
3-Pointers	3	- 2 times (last vs. Fort Scott)
3-Point Attempts	6	- (last vs. Fort Scott)
Free Throws	9	- Allen County
Free-Throw Attempts	10	- Allen County
Rebounds	9	- Labette
Assists	9	- Allen County
Blocked Shots	2	- Allen County
Steals	3	- 2 times (last vs. Sterling JV)
Minutes Played	33:21	- Labette

Opponent	FG-A	3Pt-A	FT-A	Pts	OR	DR	TR	PF	A	TO	B	S	Min
St. Mary JV*	9-14	2-5	0-0	20	0	2	2	1	3	4	0	2	28:59
Labette*	5-13	1-4	3-5	14	0	9	9	2	8	7	1	3	33:21
Sterling JV*	5-8	3-6	2-3	15	1	2	3	3	5	1	0	3	20:10
Fort Scott*	7-15	3-6	6-9	23	3	3	6	2	5	1	0	0	32:57
Weatherford*	5-10	0-2	6-8	16	1	6	7	2	6	4	0	0	29:21
Allen County*	8-14	0-3	9-10	25	0	7	7	0	9	4	2	2	31:45

Clarendon  
 McCook  
 Highland  
 Allen County  
 Friends University JV  
 Coffeyville  
 Kansas City  
 Central Nebraska  
 Seward County  
 Dodge City  
 Garden City  
 Butler  
 Barton  
 Colby  
 Pratt  
 Cloud County  
 Seward County  
 Dodge City  
 Garden City  
 Butler  
 Barton  
 Colby  
 Pratt  
 Cloud County  
 \* - Indicates Started Game



### Caydrick Bloomquist

Height - 6-0  
 Year - Freshman  
 Position - Guard  
 Hometown - Emporia, KS

#### Bloomquist's Season Highs

Points	3	- St. Mary JV
Field Goals	1	- St. Mary JV
Field Goal Attempts	5	- St. Mary JV
3-Pointers	1	- St. Mary JV
3-Point Attempts	5	- St. Mary JV
Free Throws	2	- Fort Scott
Free-Throw Attempts	2	- Fort Scott
Rebounds	1	- 3 times (last vs. Weatherford)
Assists	1	- 4 times (last vs. Weatherford)
Blocked Shots	0	
Steals	1	- 2 times (last vs. Weatherford)
Minutes Played	17:29	- St. Mary JV

Opponent	FG-A	3Pt-A	FT-A	Pts	OR	DR	TR	PF	A	TO	B	S	Min
St. Mary JV	1-5	1-5	0-0	3	0	0	0	0	1	0	0	1	17:29
Labette	0-1	0-1	0-1	0	0	1	1	2	1	0	0	0	16:26
Sterling JV	0-1	0-1	0-0	0	0	0	0	1	1	0	0	0	13:31
Fort Scott	0-0	0-0	2-2	2	0	1	1	0	0	0	0	0	3:51
Weatherford	0-2	0-2	0-0	0	0	1	1	2	1	1	0	1	7:00
Allen County	0-0	0-0	0-0	0	0	0	0	0	0	0	0	0	2:35

Clarendon  
 McCook  
 Highland  
 Allen County  
 Friends University JV  
 Coffeyville  
 Kansas City  
 Central Nebraska  
 Seward County  
 Dodge City  
 Garden City  
 Butler  
 Barton  
 Colby  
 Pratt  
 Cloud County  
 Seward County  
 Dodge City  
 Garden City  
 Butler  
 Barton  
 Colby  
 Pratt  
 Cloud County  
 \* - Indicates Started Game

## 2008-09 Blue Dragon Player Season Recaps



### Devon McBride

Height - 6-3  
 Year - Sophomore  
 Position - Guard  
 Hometown - Richmond, VA

#### McBride's Season Highs

Points	23	- Sterling JV
Field Goals	8	- Sterling JV
Field Goal Attempts	16	- Fort Sciott
3-Pointers	4	- Sterling JV
3-Point Attempts	7	- Sterling JV
Free Throws	6	- Labette
Free-Throw Attempts	12	- Labette
Rebounds	5	- Labette
Assists	2	- Sterling JV
Blocked Shots	1	- Allen County
Steals	1	- Sterling JV
Minutes Played	27:44	- Fort Scott

Opponent	FG-A	3Pt-A	FT-A	Pts	OR	DR	TR	PF	A	TO	B	S	Min
St. Mary JV*	4-7	1-4	3-4	12	1	2	3	4	0	1	0	0	14:52
Labette*	3-10	2-4	6-12	14	2	3	5	2	0	0	0	0	20:24
Sterling JV*	8-13	4-7	3-3	23	1	0	1	2	1	1	0	1	15:30
Fort Scott*	7-16	1-4	1-2	16	1	2	3	0	0	1	0	0	27:44
Weatherford*	4-5	2-2	3-5	13	2	0	2	1	0	3	0	0	22:16
Allen County*	5-11	3-6	1-1	14	1	3	4	1	2	0	1	0	22:28

Clarendon  
 McCook  
 Highland  
 Allen County  
 Friends University JV  
 Coffeyville  
 Kansas City  
 Central Nebraska  
 Seward County  
 Dodge City  
 Garden City  
 Butler  
 Barton  
 Colby  
 Pratt  
 Cloud County  
 Seward County  
 Dodge City  
 Garden City  
 Butler  
 Barton  
 Colby  
 Pratt  
 Cloud County

\* - Indicates Started Game



### Cliff Dixon

Height - 6-9  
 Year - Sophomore  
 Position - Forward  
 Hometown - Suitland, MD

#### Dixon's Season Highs

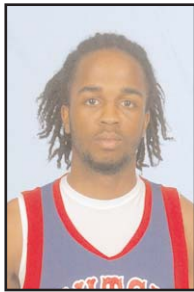
Points	19	- Labette
Field Goals	8	- 2 times (last vs. Sterling JV)
Field Goal Attempts	13	- Labette
3-Pointers	1	- Weatherford
3-Point Attempts	2	- Weatherford
Free Throws	5	- St. Mary JV
Free-Throw Attempts	6	- 2 times (last vs. Sterling JV)
Rebounds	12	- Weatherford
Assists	4	- Weatherford
Blocked Shots	2	- Weatherford
Steals	2	- Weatherford
Minutes Played	29:03	- Weatherford

Opponent	FG-A	3Pt-A	FT-A	Pts	OR	DR	TR	PF	A	TO	B	S	Min
St. Mary JV	4-9	0-0	5-6	13	4	3	7	2	3	3	1	1	14:10
Labette	8-13	0-1	3-5	19	1	3	4	1	0	4	1	3	26:20
Sterling JV*	8-11	0-0	2-6	18	3	4	7	1	3	0	1	1	20:09
Fort Scott*	5-10	0-1	1-2	11	2	5	7	2	3	2	0	2	23:46
Weatherford*	7-15	1-2	2-4	17	6	6	12	2	4	6	2	3	29:03
Allen County*	5-9	0-0	1-1	11	1	5	6	2	2	5	0	1	26:11

Clarendon  
 McCook  
 Highland  
 Allen County  
 Friends University JV  
 Coffeyville  
 Kansas City  
 Central Nebraska  
 Seward County  
 Dodge City  
 Garden City  
 Butler  
 Barton  
 Colby  
 Pratt  
 Cloud County  
 Seward County  
 Dodge City  
 Garden City  
 Butler  
 Barton  
 Colby  
 Pratt  
 Cloud County

\* - Indicates Started Game

## 2008-09 Blue Dragon Player Season Recaps



### Lazarius 'Ty' Johnson

Height - 6-3  
Year - Freshman  
Position - Guard  
Hometown - Miami, Fla

#### Johnson's Season Highs

Points.....	11	- Labette
Field Goals .....	5	- Labette
Field Goal Attempts .....	8	- Labette
3-Pointers .....	2	- Fort Scott
3-Point Attempts .....	3	- Labette
Free Throws .....	4	- St. Mary JV
Free-Throw Attempts .....	4	- St. Mary JV
Rebounds .....	9	- Fort Scott
Assists .....	9	- Sterling College JV
Blocked Shots .....	0	- Labette
Steals .....	4	- Sterling College JV
Minutes Played .....	35:31	- Fort Scott

Opponent .....	FG-A	3Pt-A	FT-A	Pts	OR	DR	TR	PF	A	TO	B	S	Min
St. Mary JV* .....	1-6	0-3	4-4	6	0	4	4	1	6	0	0	1	28:08
Labette* .....	5-8	0-1	1-3	11	0	2	2	2	3	3	0	1	28:30
Sterling JV* .....	1-4	0-2	1-2	3	0	2	2	1	9	1	0	4	22:24
Fort Scott* .....	3-5	2-2	0-0	8	1	8	9	3	5	5	0	2	35:21
Weatherford* .....	3-5	1-2	0-1	7	1	4	5	2	3	0	0	0	28:20
Allen County* .....	2-3	0-1	0-0	4	0	4	4	4	2	3	0	1	20:37

Clarendon  
McCook  
Highland  
Allen County  
Friends University JV  
Coffeyville  
Kansas City  
Central Nebraska  
Seward County  
Dodge City  
Garden City  
Butler  
Barton  
Colby  
Pratt  
Cloud County  
Seward County  
Dodge City  
Garden City  
Butler  
Barton  
Colby  
Pratt  
Cloud County

\* - Indicates Started Game



### Javari Williams

Height - 6-3  
Year - Redshirt Freshman  
Position - Forward  
Hometown - Brampton, Ontario, Canada

#### Williams' Season Highs

Points.....	12	- Weatherford
Field Goals .....	5	- St. Mary JV
Field Goal Attempts .....	13	- St. Mary JV
3-Pointers .....	0	
3-Point Attempts .....	1	- St. Mary JV
Free Throws.....	4	- Weatherford
Free-Throw Attempts .....	8	- Weatherford
Rebounds .....	7	- St. Mary JV
Assists .....	7	- Weatherford
Blocked Shots .....	2	- Allen County
Steals .....	5	- Sterling College JV
Minutes Played .....	25:20	- Weatherford

Opponent .....	FG-A	3Pt-A	FT-A	Pts	OR	DR	TR	PF	A	TO	B	S	Min
St. Mary JV .....	5-13	0-1	0-2	10	4	3	7	1	0	4	0	1	20:20
Labette .....	3-7	0-0	0-4	6	4	2	6	1	1	0	0	0	17:21
Sterling JV .....	4-5	0-0	2-5	10	2	2	4	1	1	1	0	5	18:16
Fort Scott.....	DNP												
Weatherford .....	4-4	0-0	4-8	12	1	4	5	4	7	2	0	1	25:20
Allen County.....	3-3	0-0	0-5	6	0	2	2	2	0	1	2	1	18:18

Clarendon  
McCook  
Highland  
Allen County  
Friends University JV  
Coffeyville  
Kansas City  
Central Nebraska  
Seward County  
Dodge City  
Garden City  
Butler  
Barton  
Colby  
Pratt  
Cloud County  
Seward County  
Dodge City  
Garden City  
Butler  
Barton  
Colby  
Pratt  
Cloud County

\* - Indicates Started Game

## 2008-09 Blue Dragon Player Season Recaps



### Tom Shirley

Height - 6-8  
Year - Freshman  
Position - Forward  
Hometown - Grantville, KS

#### Shirley's Season Highs

Points.....	19	- Weatherford
Field Goals.....	8	- Weatherford
Field Goal Attempts.....	10	- Weatherford
3-Pointers.....	4	- Allen County
3-Point Attempts.....	4	- Allen County
Free Throws.....	4	- St. Mary JV
Free-Throw Attempts.....	4	- St. Mary JV
Rebounds.....	12	- Labette
Assists.....	2	- 3 times (last vs. Weatherford)
Blocked Shots.....	3	- 2 times (Sterling College JV)
Steals.....	2	- 2 times (last vs. Labette)
Minutes Played.....	26:04	- Weatherford

Opponent	FG-A	3Pt-A	FT-A	Pts	OR	DR	TR	PF	A	TO	B	S	Min
St. Mary JV*	2-3	0-0	4-4	8	1	5	6	2	2	1	3	2	21:24
Labette*	3-5	0-0	1-2	7	6	6	12	3	2	1	0	2	24:55
Sterling JV*	2-3	0-0	1-4	5	3	6	9	2	1	2	3	0	22:43
Fort Scott*	0-3	0-0	0-0	0	1	4	5	3	1	0	0	1	20:44
Weatherford*	8-10	1-1	2-3	19	2	3	5	1	2	2	2	0	26:04
Allen County*	5-7	4-4	0-1	14	0	1	1	2	0	2	1	0	23:18

Clarendon  
McCook  
Highland  
Allen County  
Friends University JV  
Coffeyville  
Kansas City  
Central Nebraska  
Seward County  
Dodge City  
Garden City  
Butler  
Barton  
Colby  
Pratt  
Cloud County  
Seward County  
Dodge City  
Garden City  
Butler  
Barton  
Colby  
Pratt  
Cloud County  
\* - Indicates Started Game



### Cody Beaton

Height - 6-3  
Year - Freshman  
Position - Guard  
Hometown - Hutchinson, KS

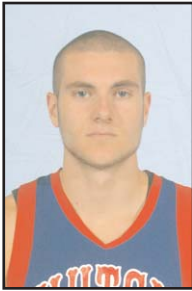
#### Beaton's Season Highs

Points.....	4	- Fort Scott
Field Goals.....	2	- Fort Scott
Field Goal Attempts.....	2	- 2 times (last vs. Fort Scott)
3-Pointers.....	1	- 2 times (last vs. Sterling College JV)
3-Point Attempts.....	4	- St. Mary JV
Free Throws.....	1	- Labette
Free-Throw Attempts.....	2	- 2 times (last vs. Allen County)
Rebounds.....	2	- Labette
Assists.....	3	- Labette
Blocked Shots.....	0	
Steals.....	0	
Minutes Played.....	10:18	- Sterling College JV

Opponent	FG-A	3Pt-A	FT-A	Pts	OR	DR	TR	PF	A	TO	B	S	Min
St. Mary JV.....	1-1	1-4	0-0	3	0	0	0	0	0	0	0	0	8:58
Labette.....	0-1	0-1	1-2	1	1	1	2	0	3	0	0	0	7:54
Sterling JV.....	1-2	1-2	0-0	3	0	0	0	0	1	2	0	0	10:18
Fort Scott.....	2-2	0-0	0-0	4	0	0	0	0	0	0	0	0	2:16
Weatherford.....	0-1	0-0	0-0	0	1	0	1	1	0	0	0	0	2:03
Allen County.....	0-0	0-0	0-2	0	0	0	0	0	0	0	0	0	2:25

Clarendon  
McCook  
Highland  
Allen County  
Friends University JV  
Coffeyville  
Kansas City  
Central Nebraska  
Seward County  
Dodge City  
Garden City  
Butler  
Barton  
Colby  
Pratt  
Cloud County  
Seward County  
Dodge City  
Garden City  
Butler  
Barton  
Colby  
Pratt  
Cloud County  
\* - Indicates Started Game

## 2008-09 Blue Dragon Player Season Recaps



### Austin Bond

Height - 6-5  
Year - Sophomore  
Position - Guard  
Hometown - Kansas City, KS

#### Bond's Season Highs

Points .....9 - Sterling College JV  
Field Goals .....3 - 2 times (last vs. Fort Scott)  
Field Goal Attempts .....6 - St. Mary JV  
3-Pointers .....2 - Sterling College JV  
3-Point Attempts .....4 - St. Mary JV  
Free Throws .....2 - Labette  
Free-Throw Attempts.....3 - Labette  
Rebounds .....6 - St. Mary JV  
Assists .....4 - St. Mary JV  
Blocked Shots.....3 - Sterling College JV  
Steals .....2 - 2 times (last vs. Sterling JV)  
Minutes Played.....24:17 - Allen County

Opponent	FG-A	3Pt-A	FT-A	Pts	OR	DR	TR	PF	A	TO	B	S	Min
St. Mary JV	2-6	1-4	0-0	5	2	4	6	2	4	1	0	2	21:34
Labette	2-4	1-3	2-3	7	1	0	1	1	1	1	1	1	13:25
Sterling JV	3-4	2-3	1-2	9	0	2	2	2	1	0	3	2	19:51
Fort Scott	3-5	1-3	0-0	7	0	1	1	1	1	3	0	1	17:51
Weatherford	1-4	0-3	1-2	3	0	1	1	3	2	2	0	1	13:55
Allen County	0-3	0-1	0-0	0	1	3	4	1	0	1	0	1	24:17

Clarendon  
McCook  
Highland  
Allen County  
Friends University JV  
Coffeyville  
Kansas City  
Central Nebraska  
Seward County  
Dodge City  
Garden City  
Butler  
Barton  
Colby  
Pratt  
Cloud County  
Seward County  
Dodge City  
Garden City  
Butler  
Barton  
Colby  
Pratt  
Cloud County  
\* - Indicates Started Game



### Dominique Rutledge

Height - 6-8  
Year - Freshman  
Position - Forward  
Hometown - Newark, N.J.

#### Rutledge's Season Highs

Points .....10 - Sterling College JV  
Field Goals .....5 - Sterling College JV  
Field Goal Attempts .....9 - 2 times (last vs. Weatherford)  
3-Pointers .....0  
3-Point Attempts .....0  
Free Throws .....2 - Allen County  
Free-Throw Attempts.....4 - Allen County  
Rebounds .....8 - Weatherford  
Assists .....2 - Fort Scott  
Blocked Shots .....1 - 2 times (last vs. Weatherford)  
Steals .....3 - Allen County  
Minutes Played.....21:48 - Fort Scott

Opponent	FG-A	3Pt-A	FT-A	Pts	OR	DR	TR	PF	A	TO	B	S	Min
St. Mary JV	DNP												
Labette	DNP												
Sterling JV	5-9	0-0	0-2	10	4	2	6	3	0	2	0	2	16:36
Fort Scott	4-7	0-0	0-2	8	4	3	7	0	2	1	1	0	21:48
Weatherford	4-9	0-0	0-0	8	2	6	8	3	1	0	1	0	9:47
Allen County	0-4	0-0	2-4	2	1	5	6	2	1	3	0	3	19:27

Clarendon  
McCook  
Highland  
Allen County  
Friends University JV  
Coffeyville  
Kansas City  
Central Nebraska  
Seward County  
Dodge City  
Garden City  
Butler  
Barton  
Colby  
Pratt  
Cloud County  
Seward County  
Dodge City  
Garden City  
Butler  
Barton  
Colby  
Pratt  
Cloud County  
\* - Indicates Started Game

## 2008-09 Blue Dragon Player Season Recaps



### Ryan Douvier

Height - 6-5  
 Year - Sophomore  
 Position - Forward  
 Hometown - Newton, KS

#### Douvier's Season Highs

Points .....6 - 2 times (last vs. Sterling College JV)  
 Field Goals.....2 - (last vs. Sterling College JV)  
 Field Goal Attempts .....6 - St. Mary JV  
 3-Pointers .....0  
 3-Point Attempts .....2 - Labette  
 Free Throws .....3 - Allen County  
 Free-Throw Attempts.....4 - Allen County  
 Rebounds .....10 - St. Mary JV  
 Assists .....4 - Sterling College JV  
 Blocked Shots .....1 - Labette  
 Steals.....2 - 2 times (last vs. Allen County)  
 Minutes Played .....24:06 - St. Mary JV

Opponent	FG-A	3Pt-A	FT-A	Pts	OR	DR	TR	PF	A	TO	B	S	Min
St. Mary JV*	2-6	0-1	2-2	6	3	7	10	4	0	1	0	2	24:06
Labette*	0-2	0-2	0-0	0	1	2	3	4	2	0	1	0	11:24
Sterling JV	2-5	0-1	2-2	6	3	5	8	2	4	1	0	0	20:32
Fort Scott	1-3	0-0	0-0	2	1	2	3	4	2	1	0	0	13:42
Weatherford	1-2	0-0	0-0	2	0	1	1	4	0	0	0	0	6:21
Allen County	0-1	0-0	3-4	3	3	1	4	3	0	1	0	2	8:29

Clarendon  
 McCook  
 Highland  
 Allen County  
 Friends University JV  
 Coffeyville  
 Kansas City  
 Central Nebraska  
 Seward County  
 Dodge City  
 Garden City  
 Butler  
 Barton  
 Colby  
 Pratt  
 Cloud County  
 Seward County  
 Dodge City  
 Garden City  
 Butler  
 Barton  
 Colby  
 Pratt  
 Cloud County  
 \* - Indicates Started Game